



Saeco Talea/Odea Brew Unit SBS Valve Replacement

Coffee leaking from the machine might be due to a failed brew unit SBS valve. This repair guide shows how to identify and repair this problem

Written By: Wayne Seltzer



INTRODUCTION

The [Saeco \(Philips\) Talea, Odea super-automation espresso machines](#) all use similar brew units. If you are experiencing coffee leaks under your machine, the problem is likely to be in the brew unit. You can replace the entire brew unit, but it's expensive. A better repair is to identify the bad part and replace it.



TOOLS:

- [TR10 Torx Security Screwdriver](#) (1)
- [magnet](#) (1)



PARTS:

- [Saece 996530001192 \(11002154\) Sbs Valve P124 Asse](#) (1)

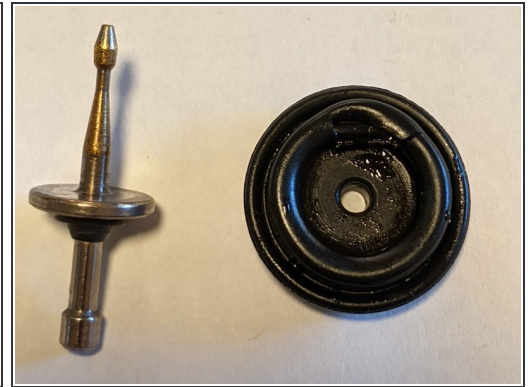
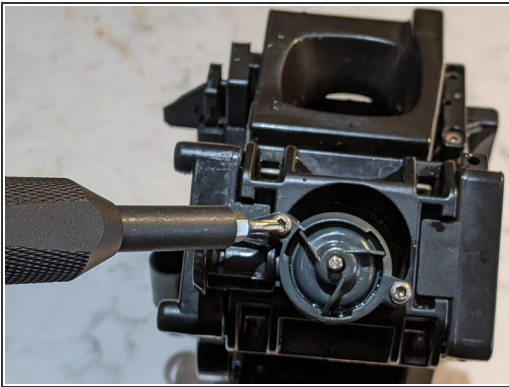
Step 1 — Identify the coffee leak source



- Coffee leak!
- There are several o-rings in the brew unit that could be the source of leaks. I replaced all of those and that didn't fix the problem. After figuring out how to observe the brew unit during operation, I found that the leak was coming from the SBS valve.
- The leak is coming from somewhere in the brew unit, but with the door closed, you can't see it in operation to identify the specific leak location.
- Use a magnet to bypass the door open detector so you can observe the brew unit in operation. (See video - [Saeco Talea Giro brew unit leak diagnosis](#))
 - I used a bag clip with an attached magnet and clipped it onto the sensor.
- Run the brew cycle. You can use the coffee bypass cycle because you don't need to waste your good beans for this test. And, it's easier to clean up if it's just water.
- Look for leaks!

- On my machine, the SBS valve on the upper left of the brew unit was leaking during the brewing process. This valve admits the pressurized water into the brew unit and includes a one-way check valve to keep the pressure in.

Step 2 — Inspect the SBS valve



- Use a T10 torx screwdriver to remove the SBS valve. It might take a little force to pop it off the brew unit once the screws are removed.
- Remove the top part of the SBS valve (with the 3 "wings") by turning it counter-clockwise. Be careful not to lose the spring!
- Inspect the valve diaphragm. Mine had a split, clearly the source of the coffee leak!

Step 3 — Replace the SBS Valve



- The SBS valve diaphragm does not appear to be a part you can buy. So, you'll need to buy the SBS valve assembly. (about \$25)
- The replacement part I purchased arrive in 3 pieces. Insert the rubber tube and snap on the part that connects to the water input.

Step 4 — Install the SBS valve in the brew unit



- Place the SBS valve into the brew unit, aligning the screw holes.
- Replace the screws with the T10 torx screwdriver.
- Make some espresso and see if your leak is gone!

To reassemble your device, follow these instructions in reverse order.