



Lenovo S410 Hard Drive Replacement

When using computers to execute a variety of...

Written By: Molin Wan



INTRODUCTION

When using computers to execute a variety of work, it might become necessary to upgrade your memory for storing a huge amount of critical data. However, due to the restriction of the price to expand the storage of a built-in hard disk, installing a new solid-state disk with larger storage is a convenient and economic method to extend storage because users can freely choose brands. The forum will focus on how to install or replace an SSD for the Lenovo S410.

Prior to beginning the repair, be sure to power off the device and unplug your laptop from the power cord. Additionally, try to avoid touching other components needlessly.

TOOLS:

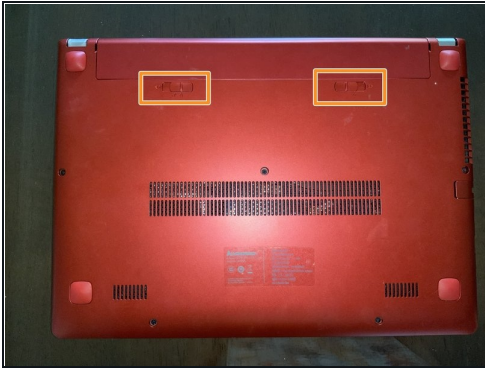
[Essential Electronics Toolkit](#) (1)

Step 1 — Hard Drive



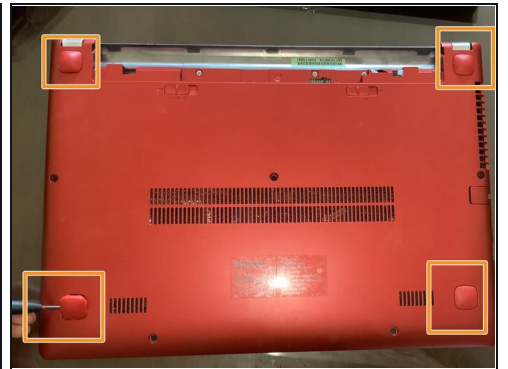
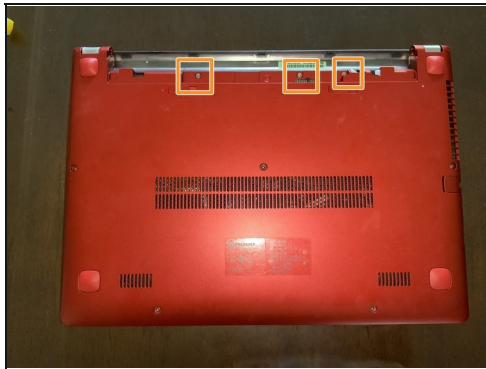
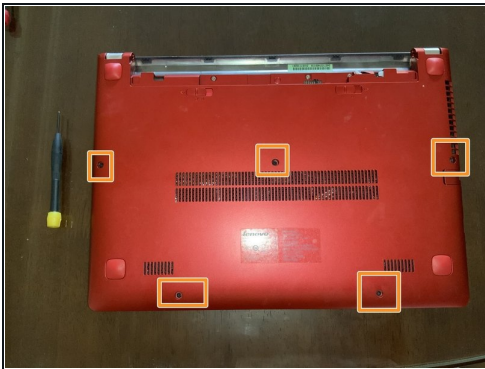
- Turn the laptop over so the backside is facing up.

Step 2



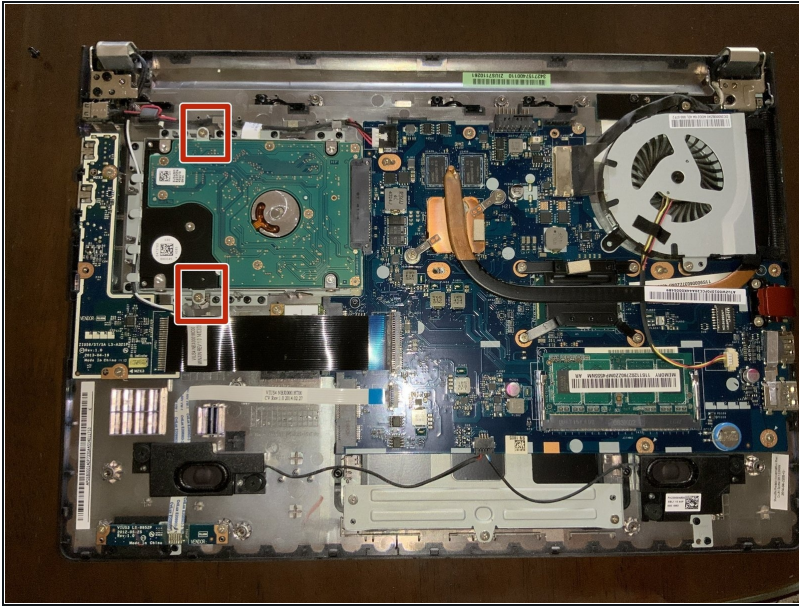
- Slide the two buttons from lock status to unlock status.
- Slide the battery out to remove it.

Step 3



- Remove the twelve screws from the rear panel.

Step 4



- Remove the back panel.
 - Remove two screws from the hard drive.
- ⚠ Avoid damaging any cable and wire around the disk.

Step 5



- Pull the hard drive out from the attachment to the motherboard.

To reassemble your device, follow these instructions in reverse order.