



Toshiba Portege M300 Wireless Card Replacement

This will demonstrate how to replace a wireless card in a Toshiba Portege M300.

Written By: Alison Wendt



INTRODUCTION

This guide will go through the steps needed to install a new wireless card.



TOOLS:

- [iFixit Opening Tool](#) (1)
 - [Phillips #0 Screwdriver](#) (1)
 - [Phillips #1 Screwdriver](#) (1)
-

Step 1 — Battery



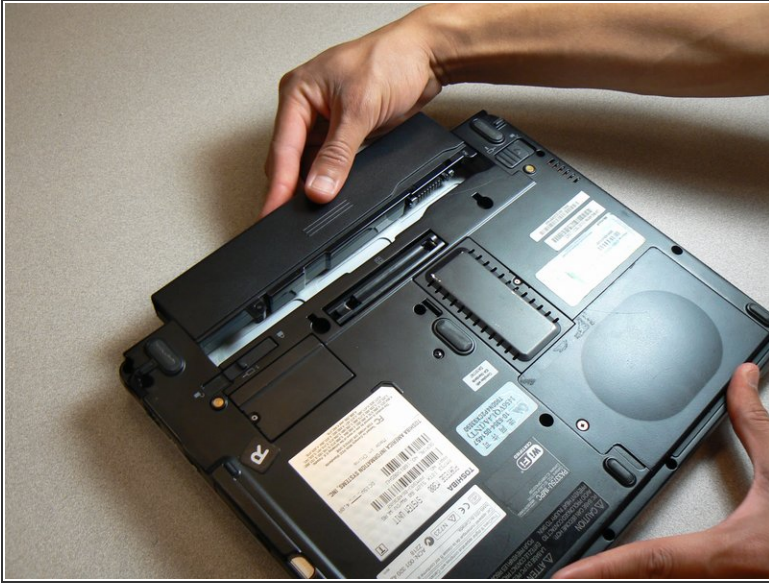
- Turn the computer over onto its back.

Step 2



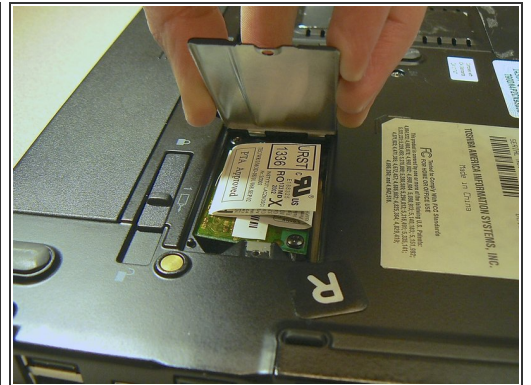
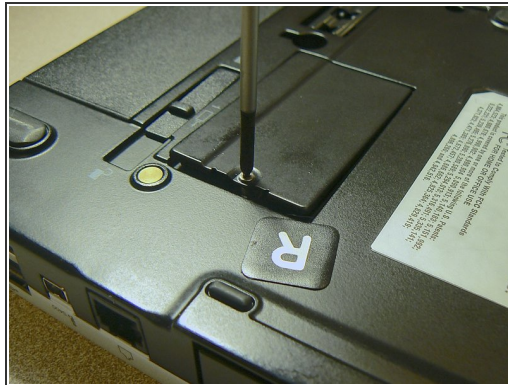
- Slide the lock on the left side to the unlock position.
- Slide the lock on the right side to the unlock position until there is a clicking sound.

Step 3



- Remove the battery by sliding it away from the laptop.
- ⓘ Make sure the two locks from the previous step are in the unlocked position while sliding the battery away.

Step 4 — Wireless Card



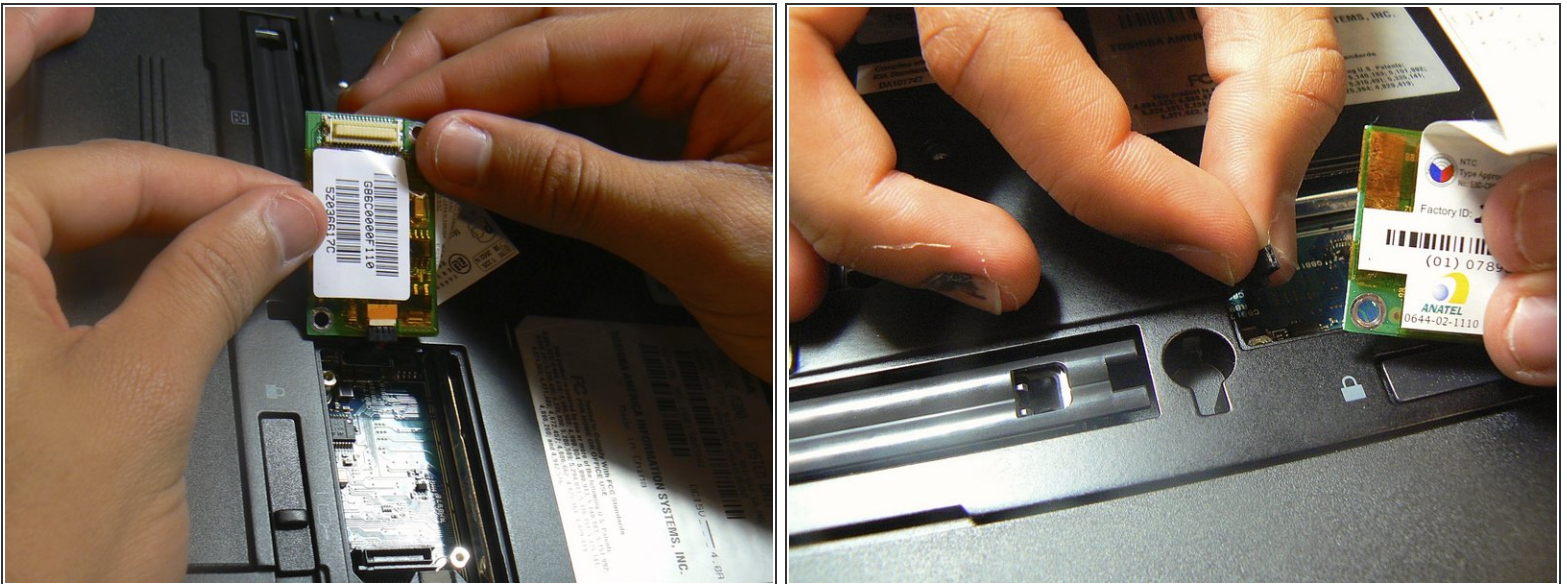
- Turn the computer onto the back.
- Remove the Phillips #0 screw that secures the cover to the rest of the device.
- One 5.1 mm coarse thread screw.
- Pull the cover forward to release it.

Step 5



- Use a Phillips #1 screwdriver to remove the two screws on opposite corners of the wireless card.
- Two 4.0 mm coarse thread screws.
- Use a plastic opening tool to gently lift the wireless card out while leaving the wire connected.

Step 6



- Hold the edges of the wireless card and carefully disconnect the black 3 pin connector.

To reassemble your device, follow these instructions in reverse order.