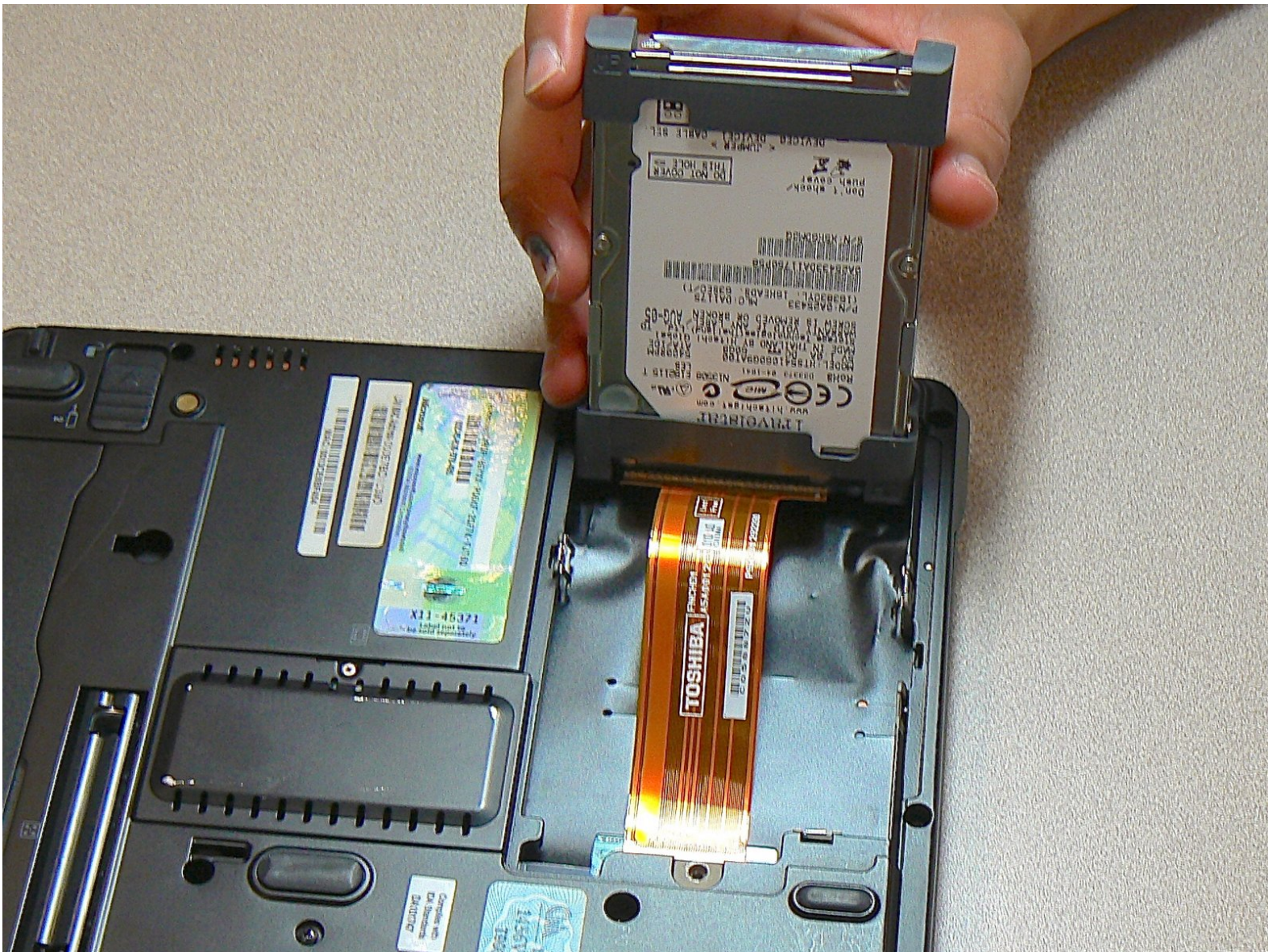




# Toshiba Portege M300 Hard Drive Replacement

This will describe how to install a Toshiba Portege M300 hard drive.

Written By: Alison Wendt



---

## INTRODUCTION

This guide will go through the steps needed to install a new hard drive.

---

### TOOLS:

- [Phillips #1 Screwdriver](#) (1)
-



## Step 1 — Battery



- Turn the computer over onto its back.

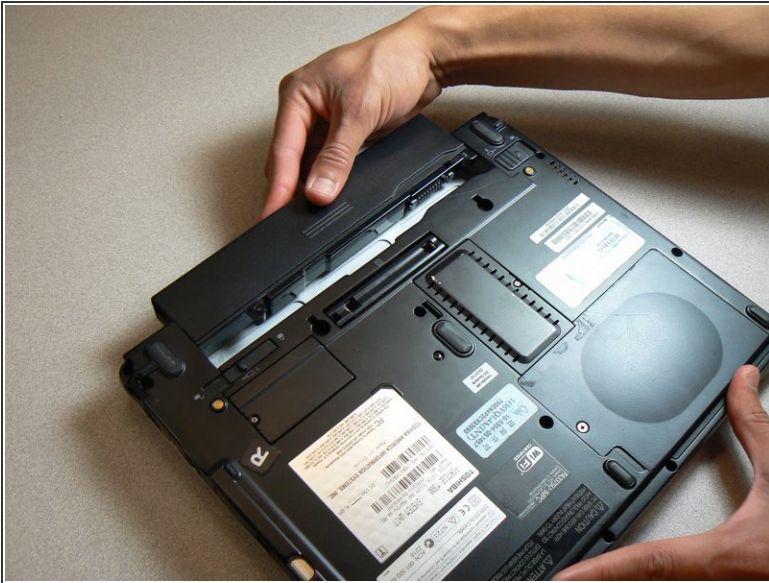
## Step 2



- Slide the lock on the left side to the unlock position.
- Slide the lock on the right side to the unlock position until there is a clicking sound.



## Step 3



- Remove the battery by sliding it away from the laptop.
- i** Make sure the two locks from the previous step are in the unlocked position while sliding the battery away.

## Step 4 — Hard Drive



- Turn the computer over onto the back.
- Use a Phillips #1 screwdriver to remove the screw from the hard drive cover.
- Lift and remove the cover.



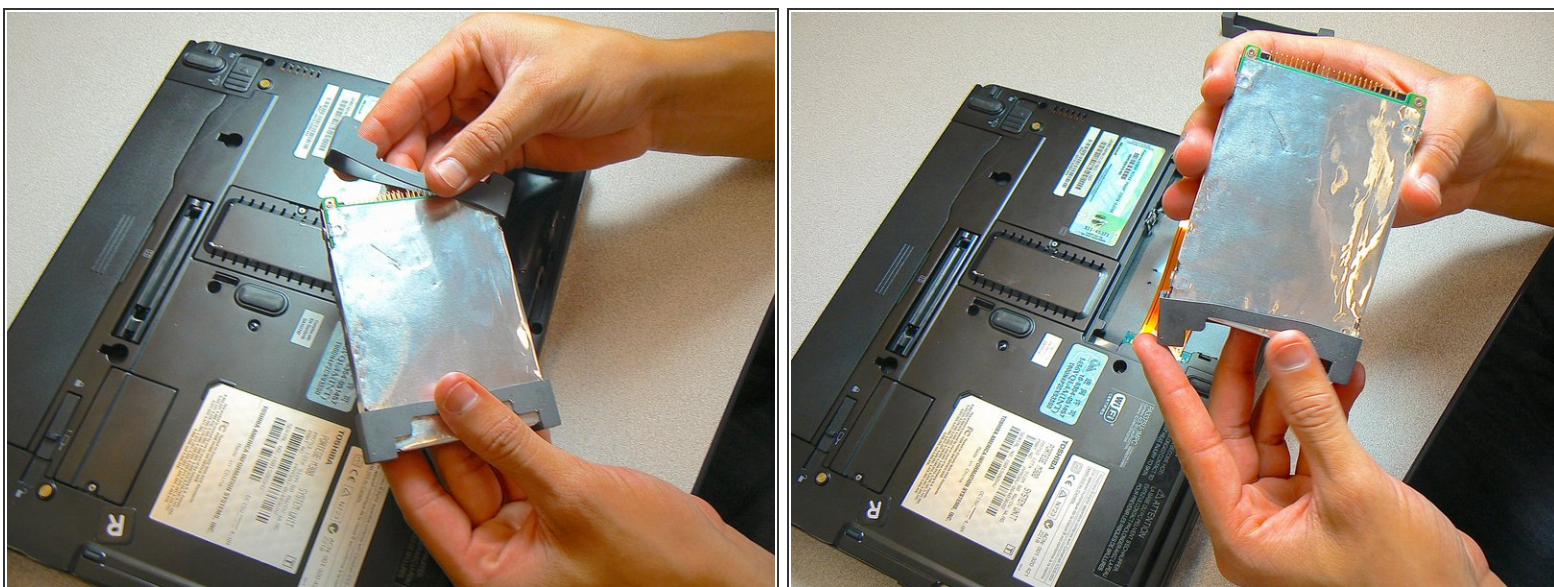
## Step 5



- Carefully remove the hard drive from the IDE cable by pulling on the black connector.

⚠ Do not pull the orange cable.

## Step 6



- Remove the two gray rubber covers from both ends of the hard drive.

To reassemble your device, follow these instructions in reverse order.