



Toshiba Portege M300 Battery Replacement

This will demonstrate how to install a Toshiba Portege M300 battery.

Written By: Alison Wendt



INTRODUCTION

This guide will go through the steps needed to remove the laptop's battery.

Step 1 — Battery



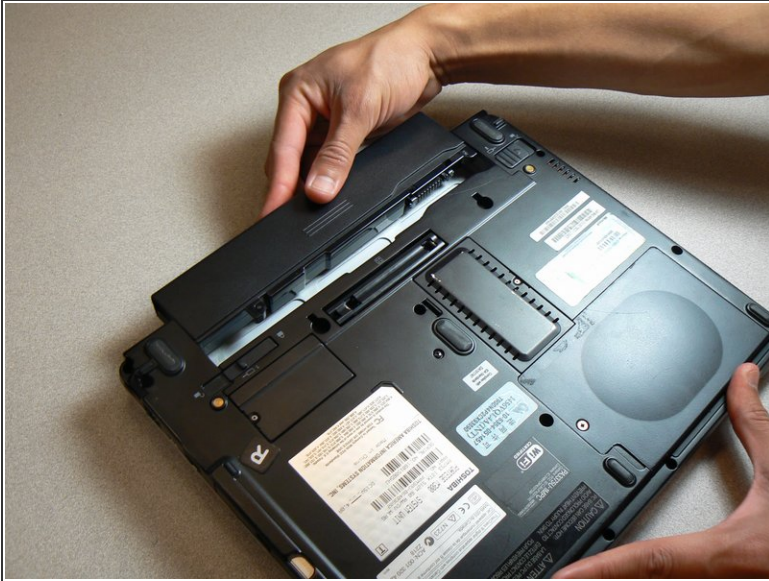
- Turn the computer over onto its back.

Step 2



- Slide the lock on the left side to the unlock position.
- Slide the lock on the right side to the unlock position until there is a clicking sound.

Step 3



- Remove the battery by sliding it away from the laptop.
- ⓘ Make sure the two locks from the previous step are in the unlocked position while sliding the battery away.

To reassemble your device, follow these instructions in reverse order.