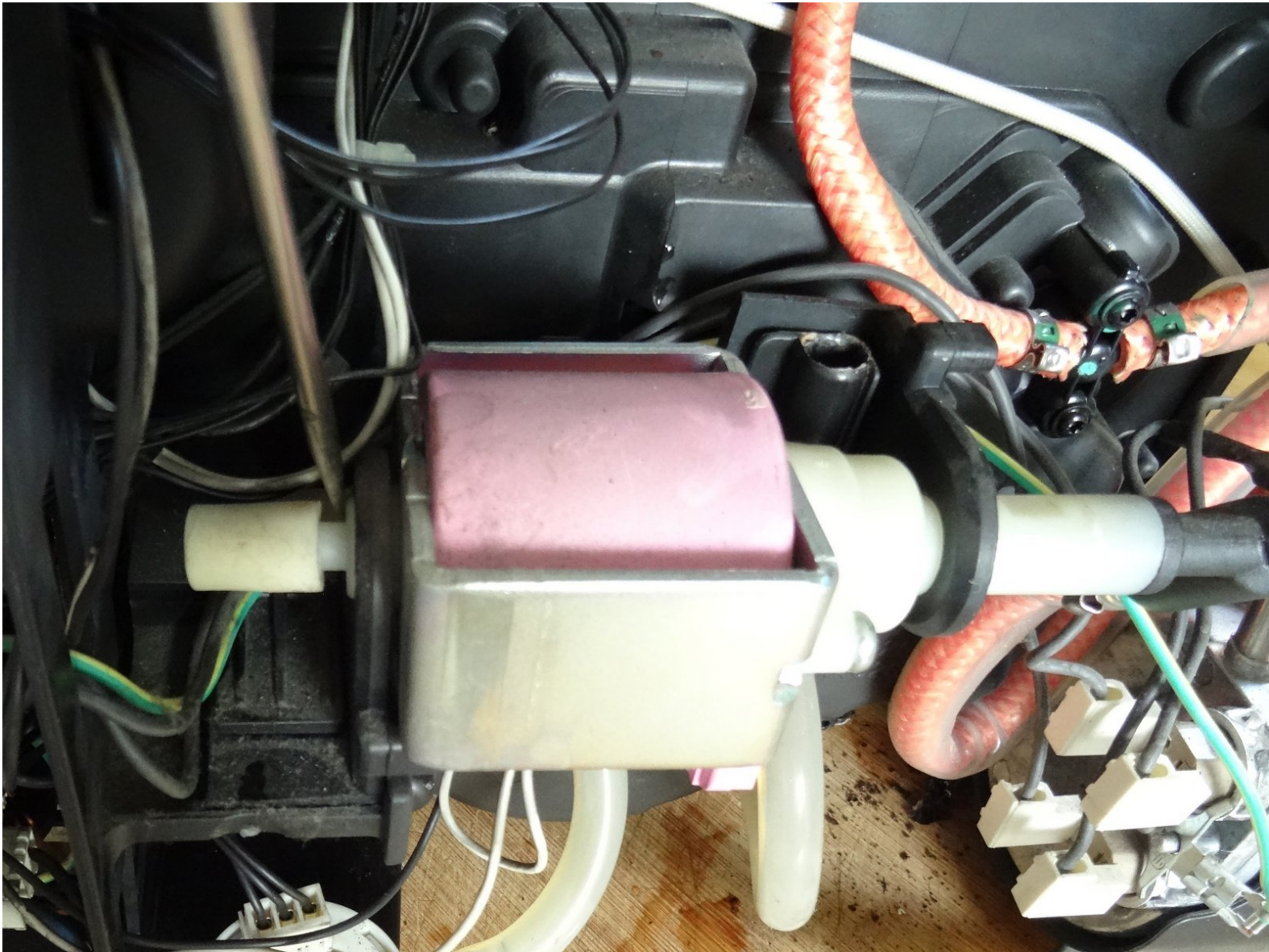




Saeco Minuto Pump Replacement

If the pump becomes weak, you will have to...

Written By: VauWeh



INTRODUCTION

If the pump becomes weak, you will have to remove it, open it and revise it. It may need to be replaced. This is shown here.



TOOLS:

- [iFixit Opening Tool](#) (1)
- [TR10 Torx Security Screwdriver](#) (1)



PARTS:

- [New Item](#) (1)

Step 1 — Open a Saeco Minuto



⚠ Disconnect the power plug!

- Remove the water tank.
- Remove all the coffee beans.
- Remove the brewing assembly.
- Remove the drip tray and the coffee grounds drawer.

Step 2



- Pry up with a plastic opening tool at the bottom edge of the chrome-plated cover to lift up the coffee dispensing spout. This cover is often very tight, so you have to pry hard and hope that the part does not break.
- When the lower edge of the spout is released, you can pry on the side edge until the chrome cover comes off completely.

Step 3



- Remove the Torx T10 screw at the top edge of the coffee dispensing spout.

Step 4



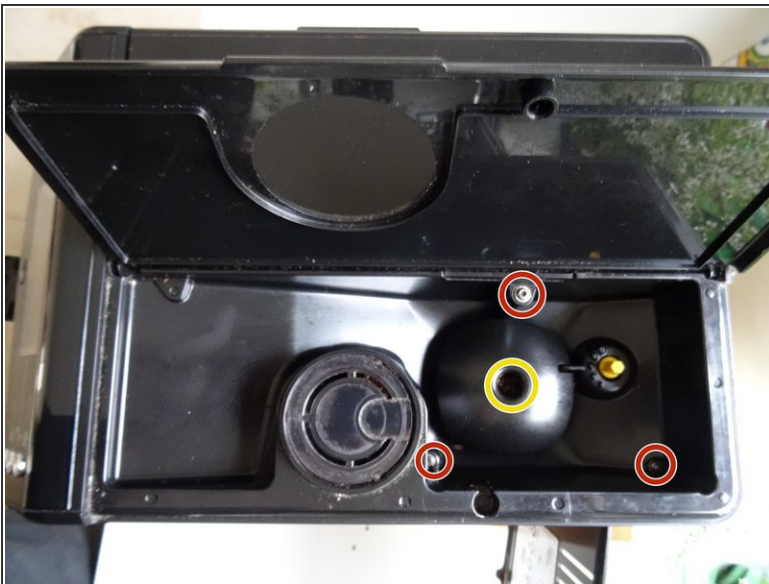
- Lift off the black cover over the coffee dispensing spout. The sliding nozzles will come off at the same time.

Step 5



- Remove both Torx T10 screws on the left and right at the bottom edge of the coffee dispensing spout.
- Pull off the hot water dispensing spout.

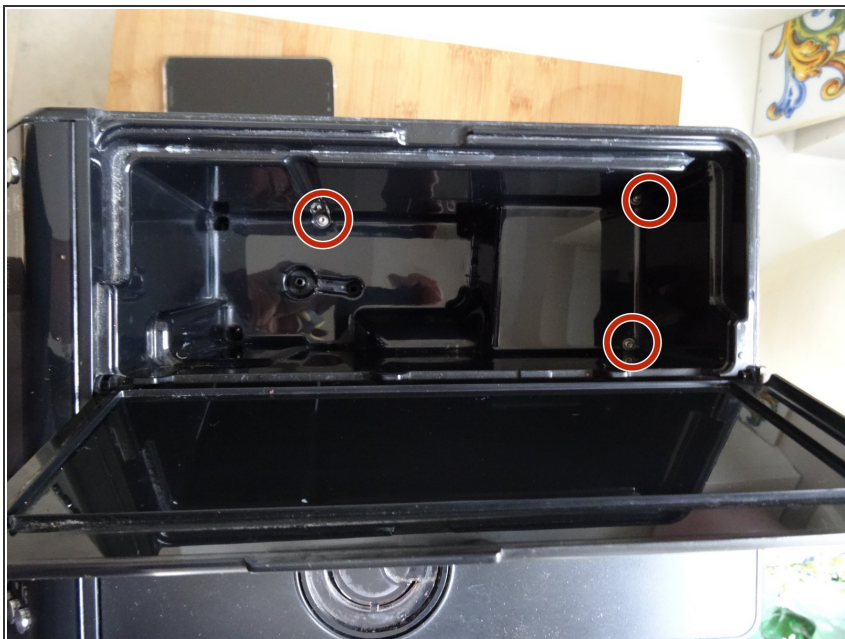
Step 6



- Remove the Torx T20 screw on the finger guard of the grinder. Remove the finger guard.
- ⓘ If the screws are covered with coffee remains, you should first clean them with a needle and a vacuum cleaner.
- Remove three Torx T10 screws in the bean container.

This document was generated on 2022-12-24 04:35:46 AM (MST).

Step 7



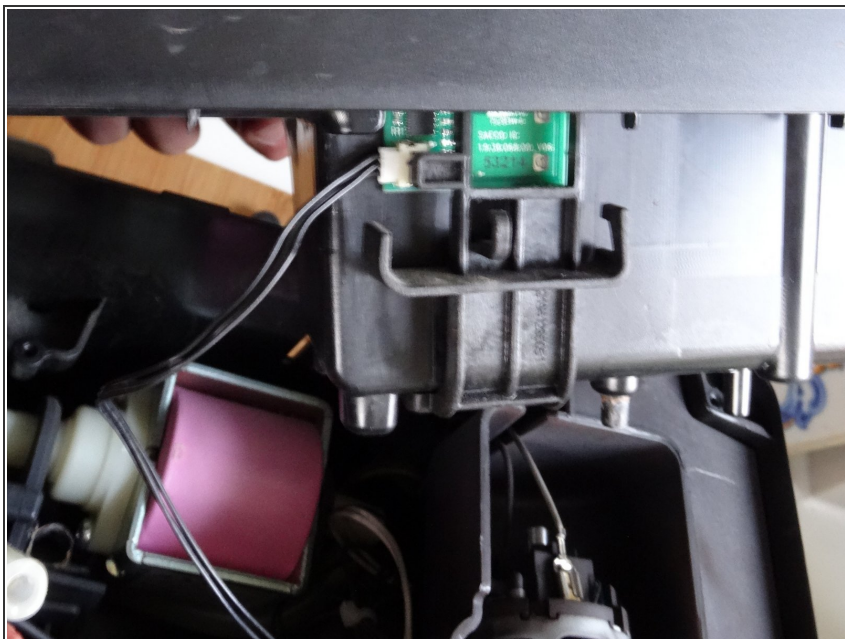
- Remove the three Torx T10 screws under the water tank.

Step 8



- Grab the upper cover on the sides and lift it up.
- ⓘ The cover is still connected with a cable and a tube.
- Take off the silicone tube.

Step 9



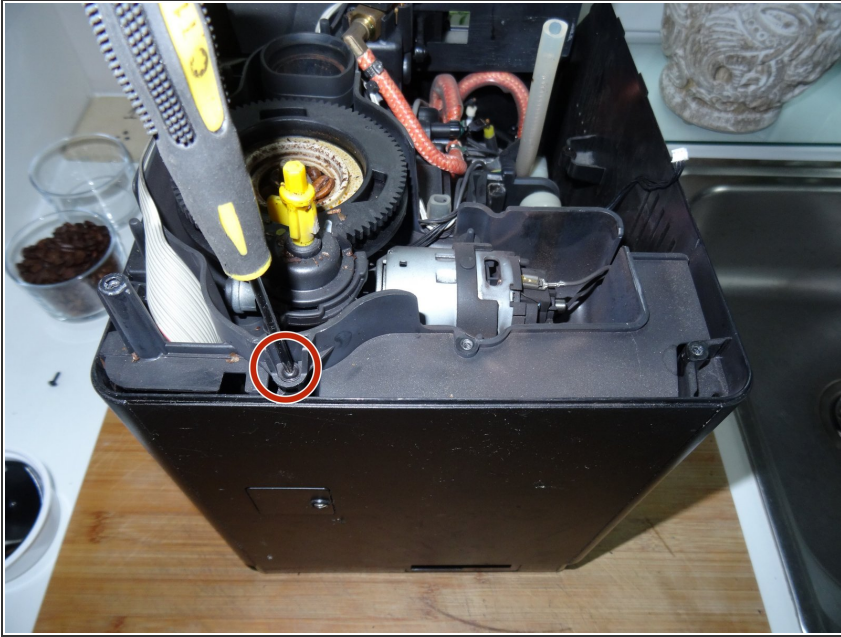
- Remove the water level sensor cable from its brackets.
- Carefully remove the plug from the water level sensor.
- The cover is now free and can be removed.

Step 10 — Saeco Minuto outer case



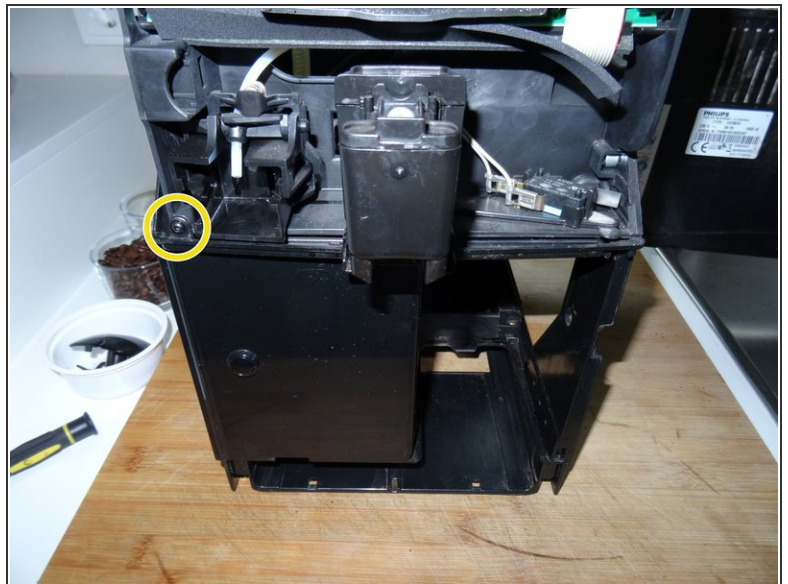
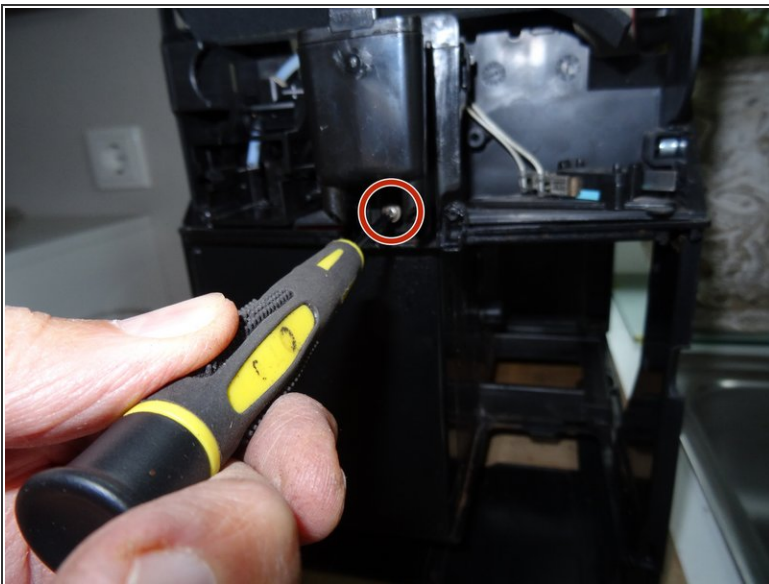
- Open the service Dior.
- Remove five Torx T10 screws.

Step 11



- Remove one T10 Torx screw securing the top of the grinder.

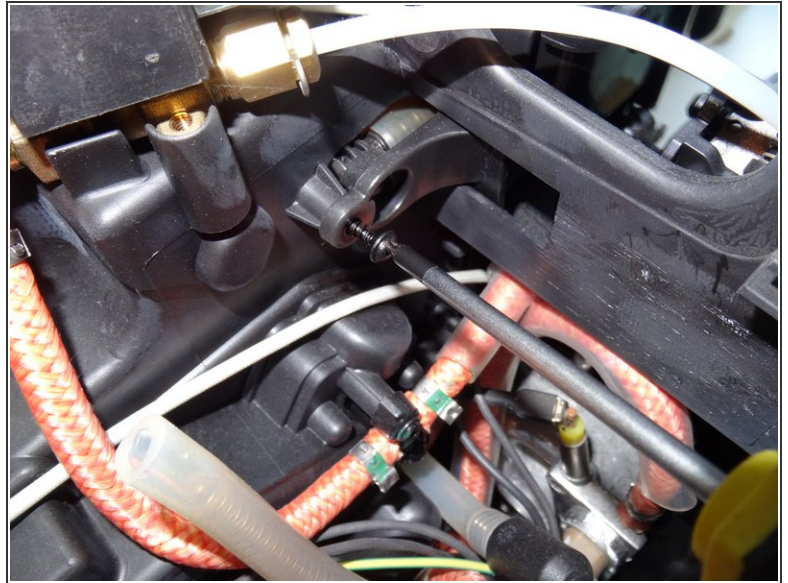
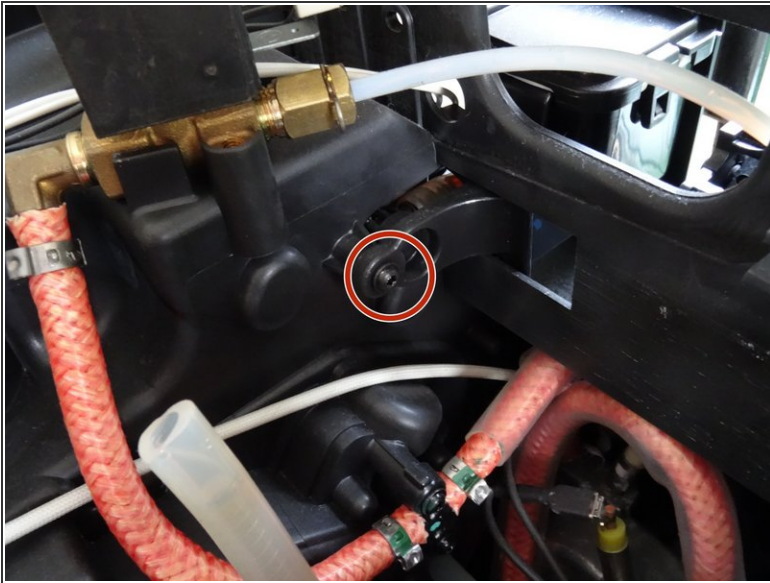
Step 12



- If you haven't already done so: Unscrew the center Torx T10 screw at the bottom of the coffee spout distributor.
- Unscrew the Torx T10 screw in the middle left front.
- Lift the service door up and remove it.

This document was generated on 2022-12-24 04:35:46 AM (MST).

Step 13



- Unscrew the Torx T10 screw securing the coffee spout distributor inside.

Step 14



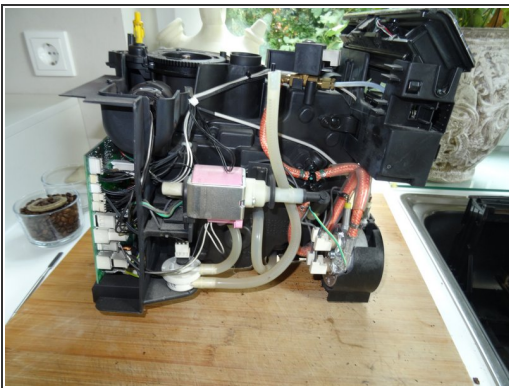
- Lift the coffee spout distributor up and remove it.
- The coffee spout distributor tends to be dirty. Open it and clean [it thoroughly](#).

Step 15



- ① You should now be able to lift the inner frame out of the outer one. On some models, it is still attached with other screws.
- Lift the inner frame up and remove it from the outer case. It may get stuck a bit, help with a plastic lever tool.

Step 16



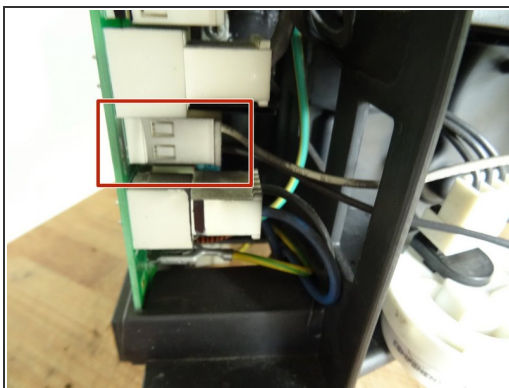
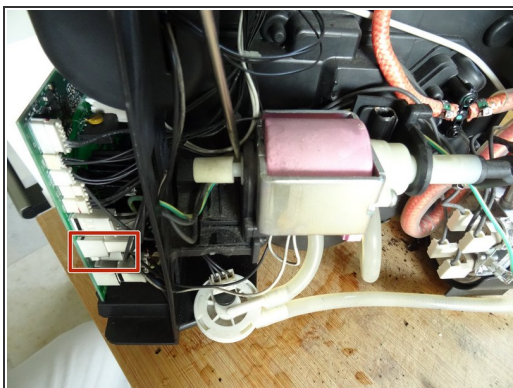
- This is what the inner frame looks like from three sides. All components are easily accessible, especially the pump, the flowmeter and the heater.

Step 17



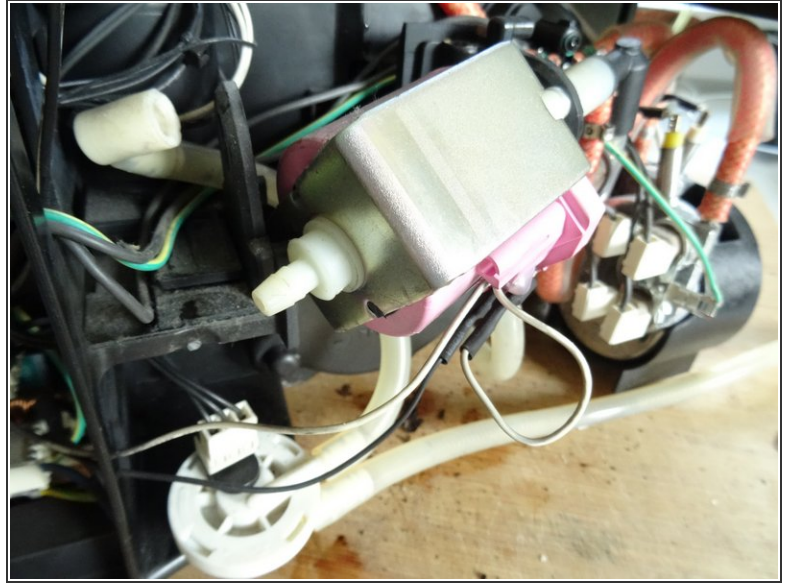
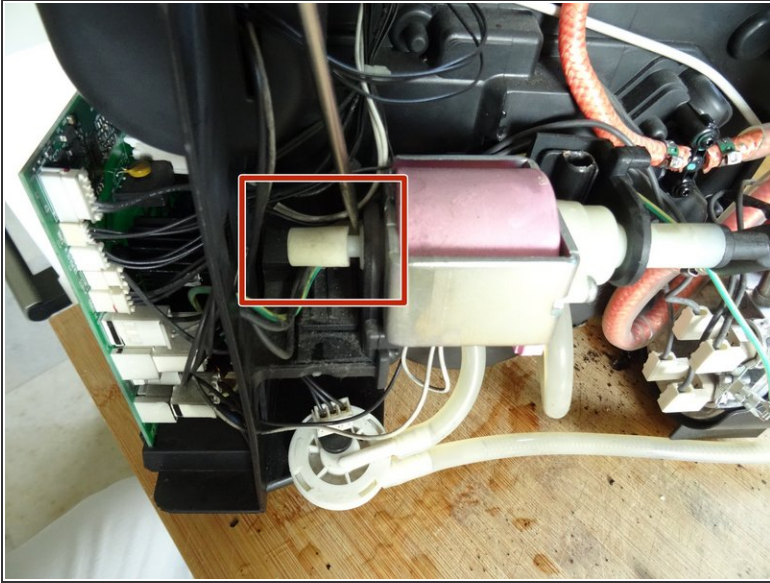
- And this is what the completely gutted outer case looks like. It can now be cleaned well.

Step 18 — Pump



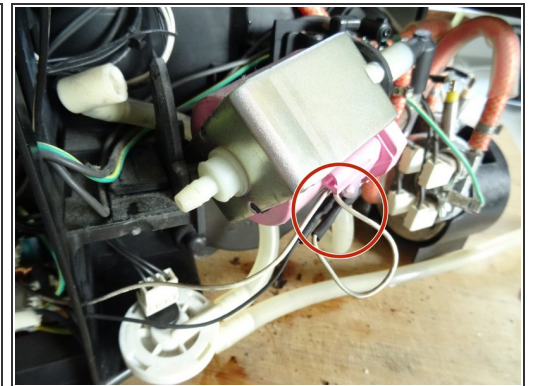
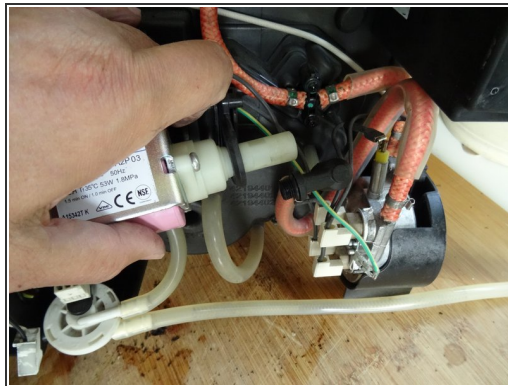
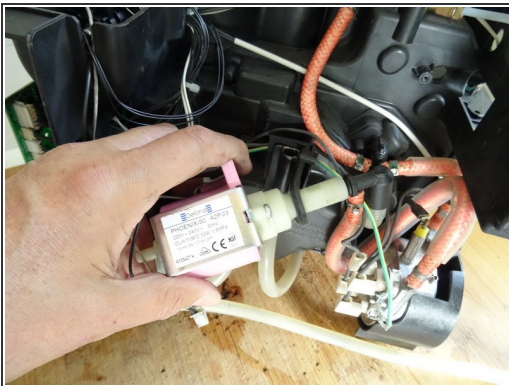
- Pull the pump cable connector to disconnect it from the PCB.

Step 19



- Slide the water inlet off the left side of the pump using a flat screwdriver.
- Get the pump out of the left rubber holder.

Step 20



- Place the cables tightly around the pump and unscrew the pump from the connection - the pressure relief valve - on the right side
 - Get the pump out of the right rubber holder.
- ⓘ If the replacement pump is not equipped with a thermal fuse, you must disconnect it from the old pump and transfer it to the new one. (marked red in the third picture)

To reassemble your device, follow the above steps in reverse order.