



Samsung Galaxy A70 Screen Replacement

Use this guide to replace a cracked or broken...

Written By: Adriana Zwink



INTRODUCTION

Use this guide to replace a cracked or broken screen on your Galaxy A70.

If the frame is deformed, it's important to replace it to make sure the new screen will mount correctly and won't suffer damage from uneven pressure.

Before disassembling your phone, discharge the battery below 25%. The battery can catch fire and/or explode if accidentally punctured, but the chances of that happening are much lower if discharged.

Note: This guide instructs you to replace only the screen while leaving the original frame and motherboard in place. However, some replacement screens for this phone come pre-installed in a new frame (a.k.a. chassis), which requires a very different procedure. Make sure you have the correct part before starting this guide.

You'll need replacement adhesive to reattach components when reassembling the device.

TOOLS:

- [SIM Card Eject Tool](#) (1)
- [iFixit Opening Picks \(Set of 6\)](#) (1)
- [iOpener](#) (1)
- [Spudger](#) (1)
- [Tesa 61395 Tape](#) (1)
- [iFixit Adhesive Remover](#) (1)
- [Plastic Cards](#) (1)
- [Suction Handle](#) (1)

Step 1 — Eject the SIM tray



- Insert a SIM card eject tool, a SIM eject bit, or a straightened paper clip into the hole on the SIM tray located at the left edge of the phone.
- Press firmly to eject the tray and remove it.

Step 2 — Soften the adhesive



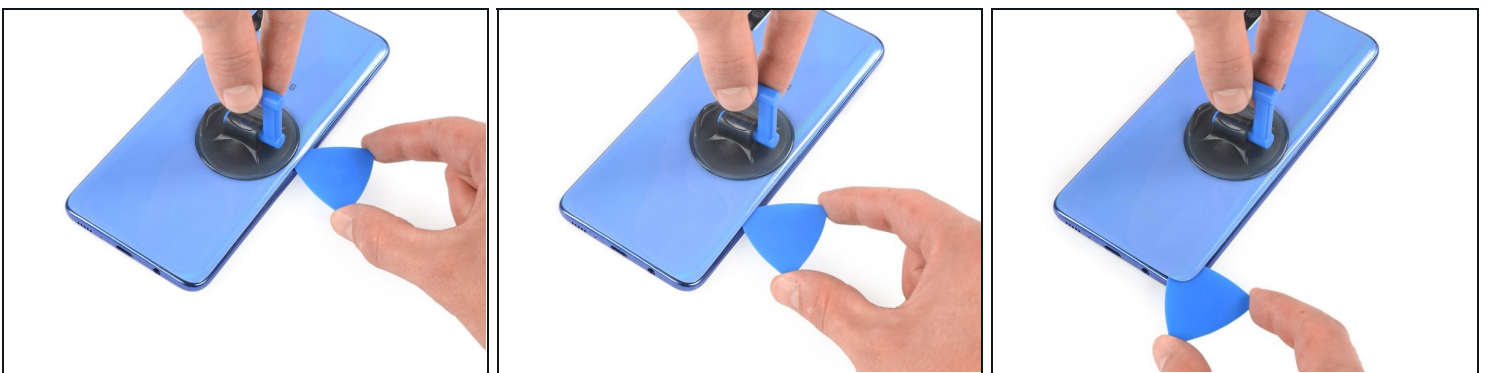
- Switch off your Galaxy A70.
- [Heat an iOpener](#) and use it to soften the adhesive beneath the back cover. Apply the iOpener for at least two minutes. You might want to repeat this step several times during the back cover removal.
- ⓘ A hair dryer, heat gun, or hot plate may also be used, but be careful not to overheat the phone—the AMOLED display and internal battery are both susceptible to heat damage.

Step 3 — Create a gap



- Apply a suction cup to the back of the phone, as close as possible to the center of the right edge.
- Pull on the suction cup to create a gap between the back cover and the frame.
- Insert an opening pick into the gap.

Step 4 — Slice the adhesive



- Slide the opening pick along the edge to the bottom right corner.
 - Leave the opening pick in its place to prevent the adhesive from resealing.
- ① Once you have inserted an opening pick, feel free to remove the suction cup or continue to use it for a better grip during the removal procedure.

Step 5



- Insert a second opening pick underneath the bottom right corner of the back cover.
- Slide the opening pick along the edge to the top right corner.
 - ❗ If you have trouble with cutting, you can use the [iOpener](#) again to soften the adhesive.
- Leave the opening picks in place to prevent the adhesive from resealing.

Step 6



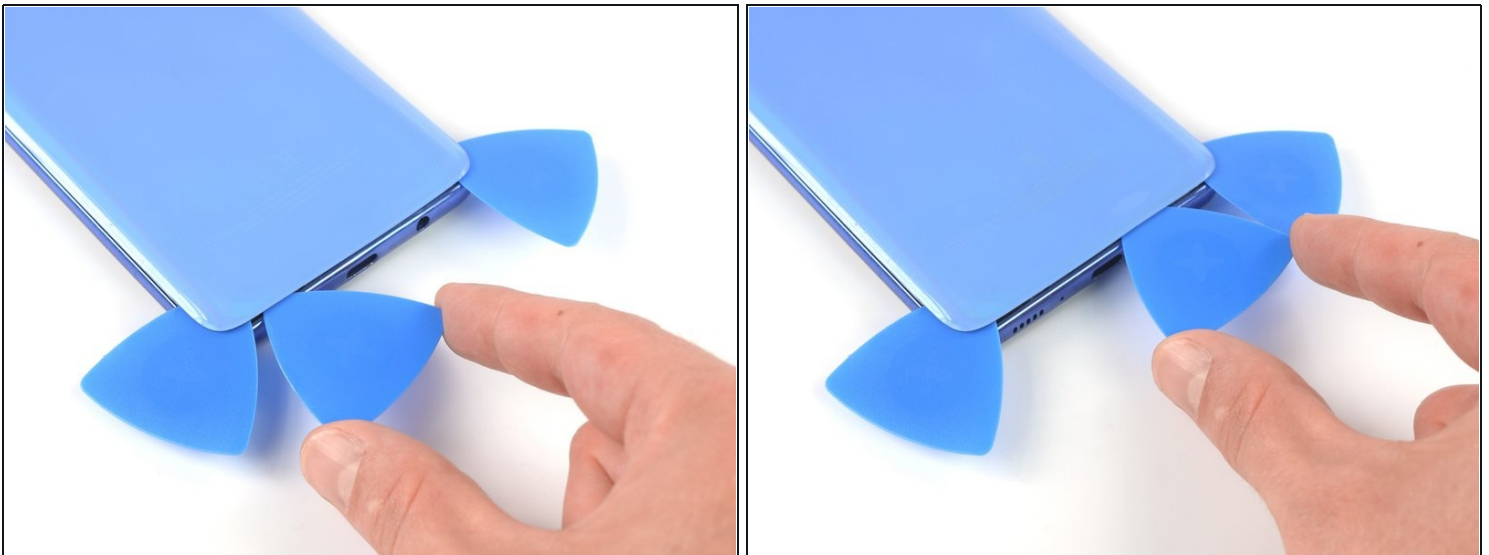
- Insert a third opening pick underneath the top right corner of the back cover.
- Slide the tip of the opening pick along the top edge of the phone to cut the adhesive.
- Leave the opening pick in the top left corner to prevent the adhesive from resealing.

Step 7



- Insert a fourth opening pick underneath the top left corner.
- Slide the opening pick along the left edge of your phone to cut the adhesive.
- Leave the opening pick in its place to prevent the adhesive from resealing.

Step 8



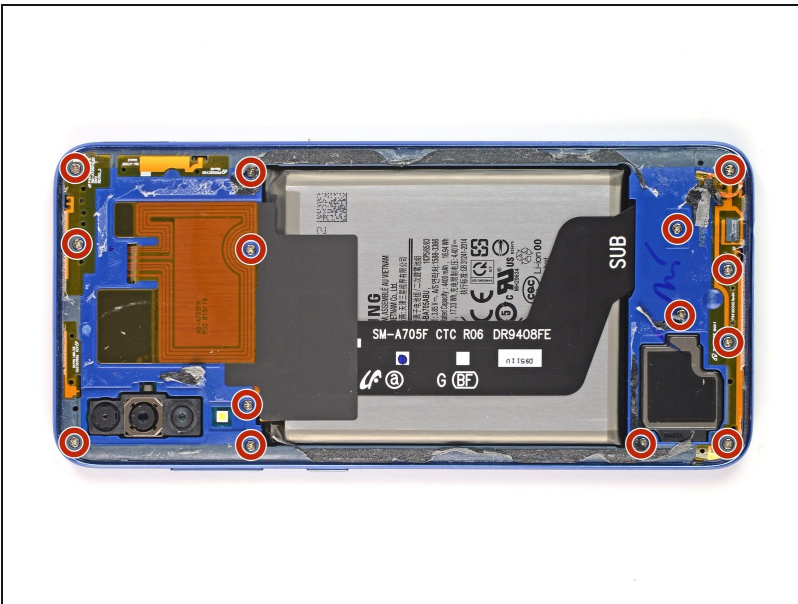
- Insert a fifth opening pick underneath the bottom left corner.
- Slide it along the the bottom edge to cut the remaining adhesive.

Step 9 — Remove the back cover



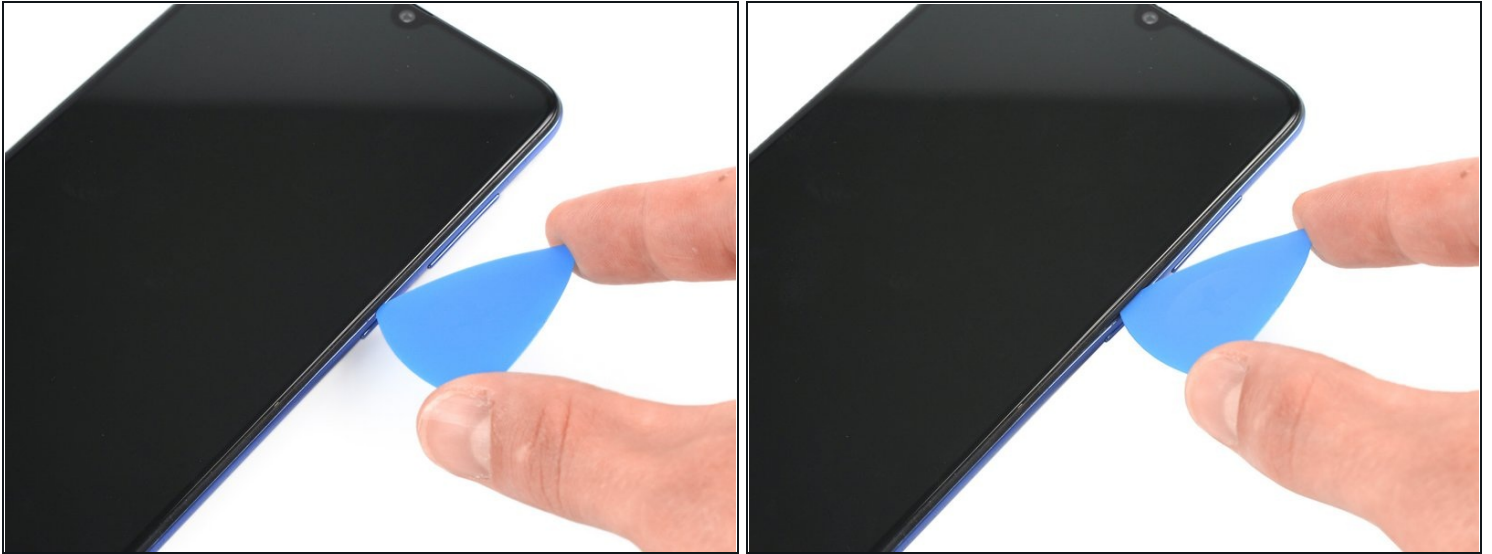
- Remove the back cover.
- ★ After installing the back cover, apply strong, steady pressure to your phone for several minutes to help the adhesive form a good bond — a stack of heavy books works well.

Step 10 — Unscrew the midframe



- Use a Phillips screwdriver to remove the fourteen 4.0 mm-long screws that secure the midframe.

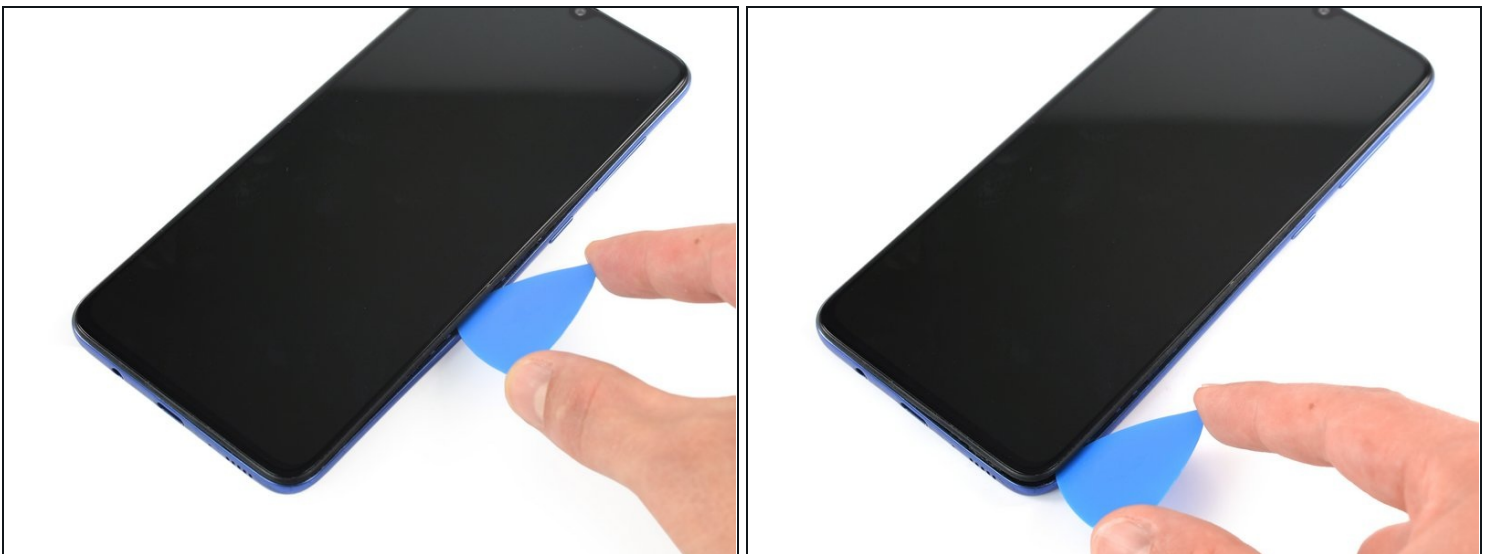
Step 11 — Insert an opening pick



① The midframe is held in place by plastic clips.

- Insert an opening pick between the midframe and front panel assembly on the right edge of the phone near the volume button.

Step 12 — Detach the plastic clips



- Slide the opening pick to the bottom right corner to detach the plastic clips.

Step 13



- Continue sliding the opening around the bottom right corner to the bottom left corner to detach the plastic clips.

Step 14



- Slide the opening pick along the left edge to detach the plastic clips.

Step 15 — Remove the midframe



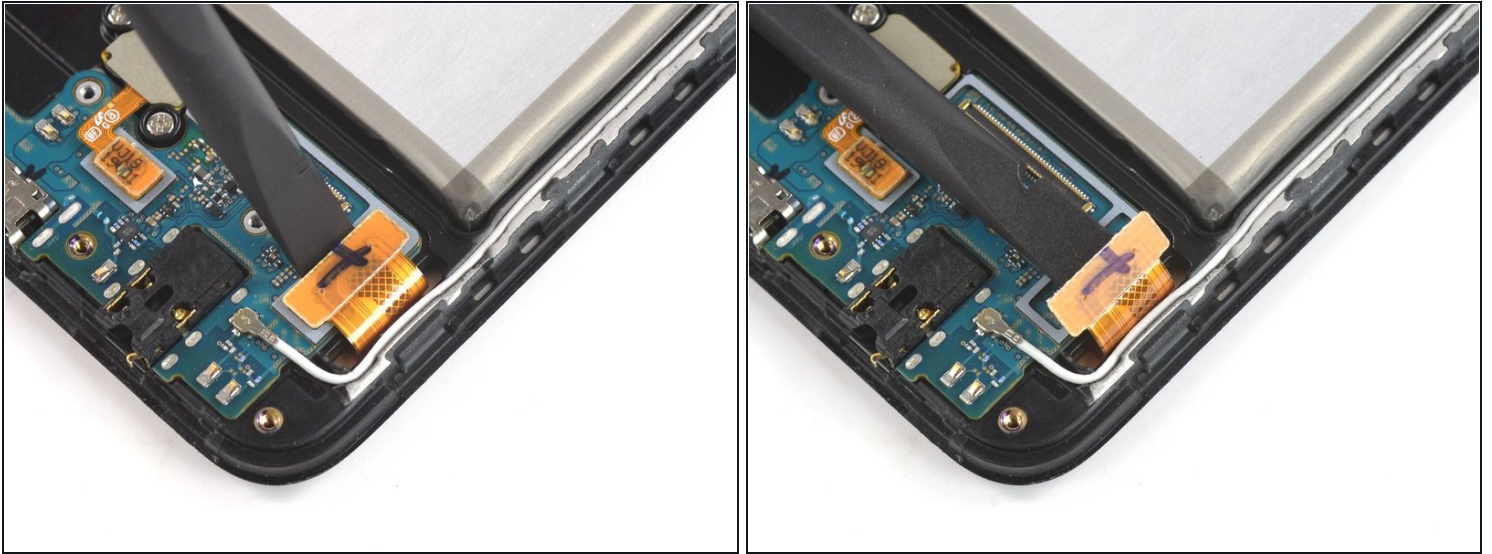
- Remove the midframe.

Step 16 — Disconnect the battery



- Use a spudger to disconnect the battery by prying the connector straight up from its socket.

Step 17 — Disconnect the display connector



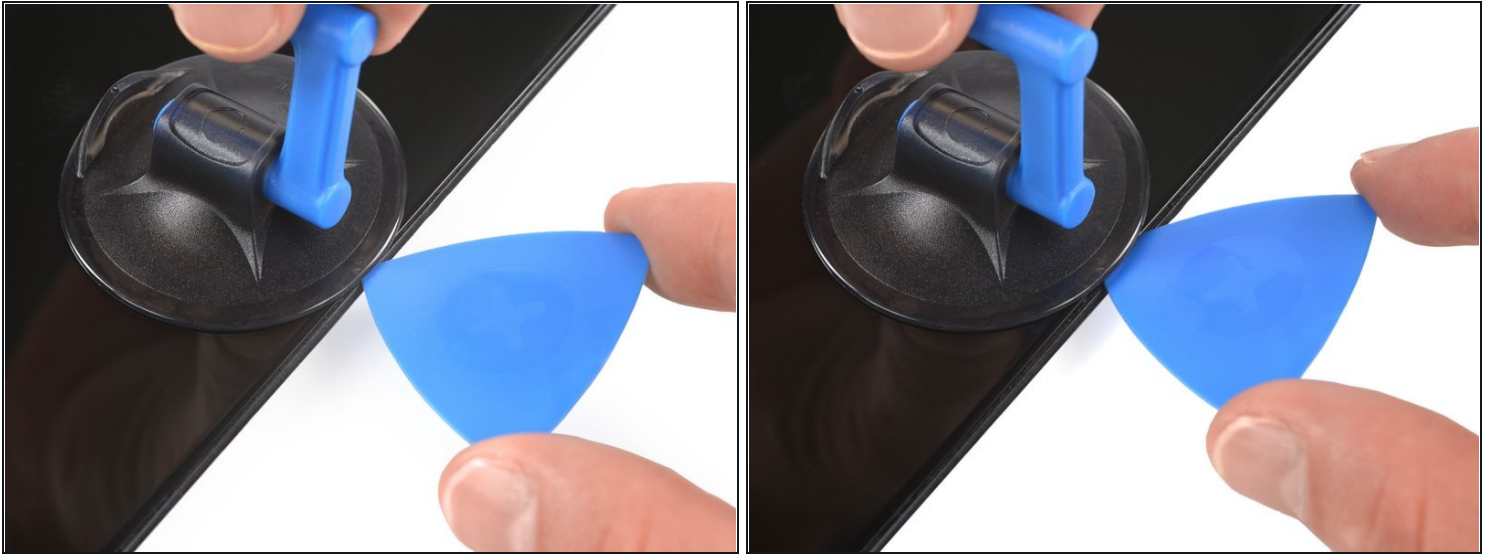
- Use the flat edge of a spudger to pry up and disconnect the display connector from its daughterboard socket.

Step 18 — Apply a heated iOpener



- Apply an [heated iOpener](#) to the screen for two minutes.
 - ⓘ A hair dryer, heat gun, or hot plate may also be used, but be careful not to overheat the phone—the display and internal battery are both susceptible to heat damage.

Step 19 — Create a gap



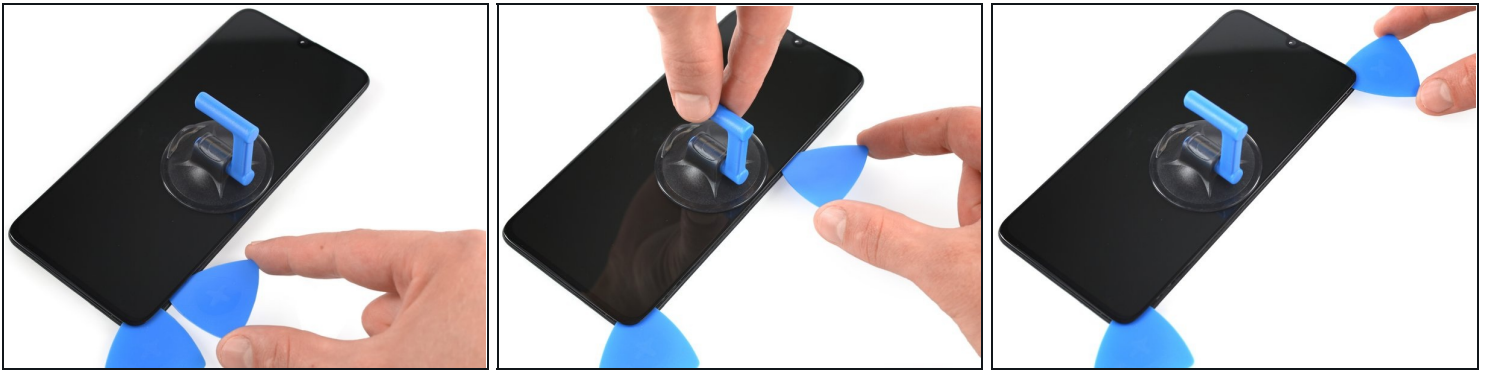
- Apply a suction cup to the right edge of the display.
 - ① If the phone's screen is cracked, the suction handle may not stick. Try [lifting it with strong tape](#), or superglue the suction handle in place and allow it to cure so you can proceed.
- Pull up the suction cup with strong, steady force to create a gap.
- Insert the tip of an opening pick into the gap.

Step 20 — Slice the adhesive



- Slide the opening pick to the bottom right corner to slice the adhesive.
- Leave the opening pick in its place to prevent the adhesive from resealing.

Step 21 — Slice the adhesive



- Insert a second opening pick underneath the bottom right corner.
- Slide the opening pick along the right edge of your phone. Leave the opening pick in the top right corner.
- Leave both opening picks in their place to prevent the adhesive from resealing.

Step 22 — Slice the adhesive



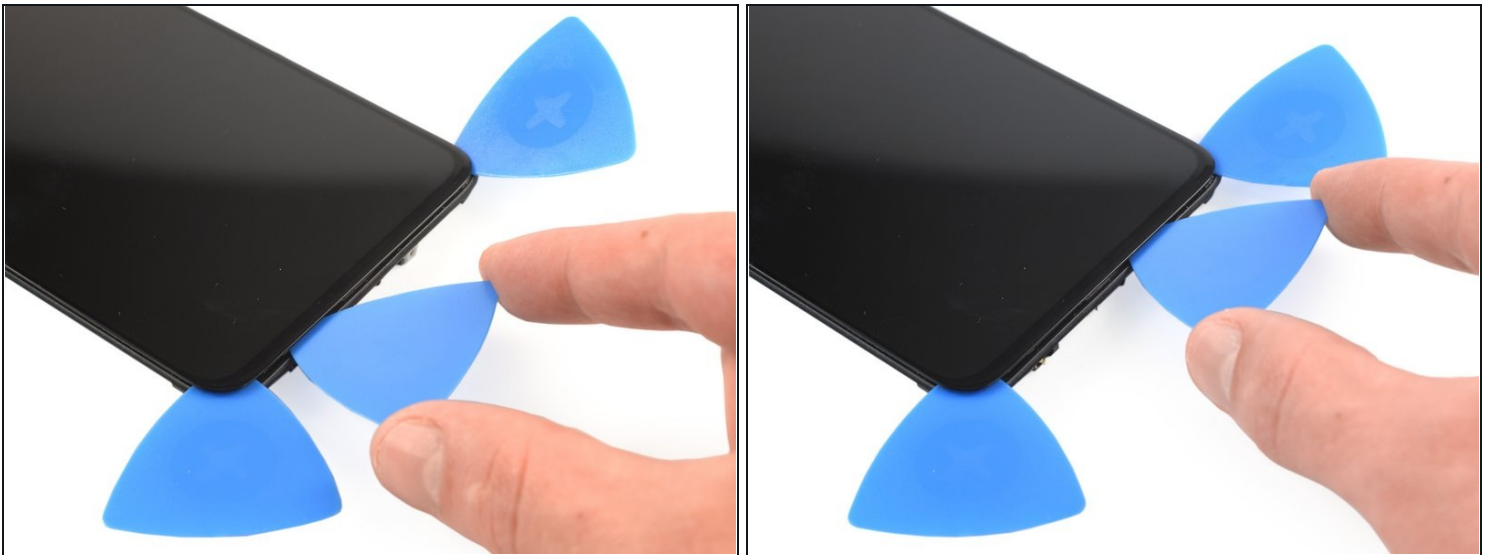
- Insert a third opening pick underneath the top right corner.
- Slide the opening pick along the top edge to slice the adhesive.
 - ① When you slice near the front facing camera, insert only the tip (3 mm) of the opening pick to avoid smearing or damaging the camera.
- Leave the opening pick in the top left corner to prevent the adhesive from resealing.

Step 23 — Slice the adhesive



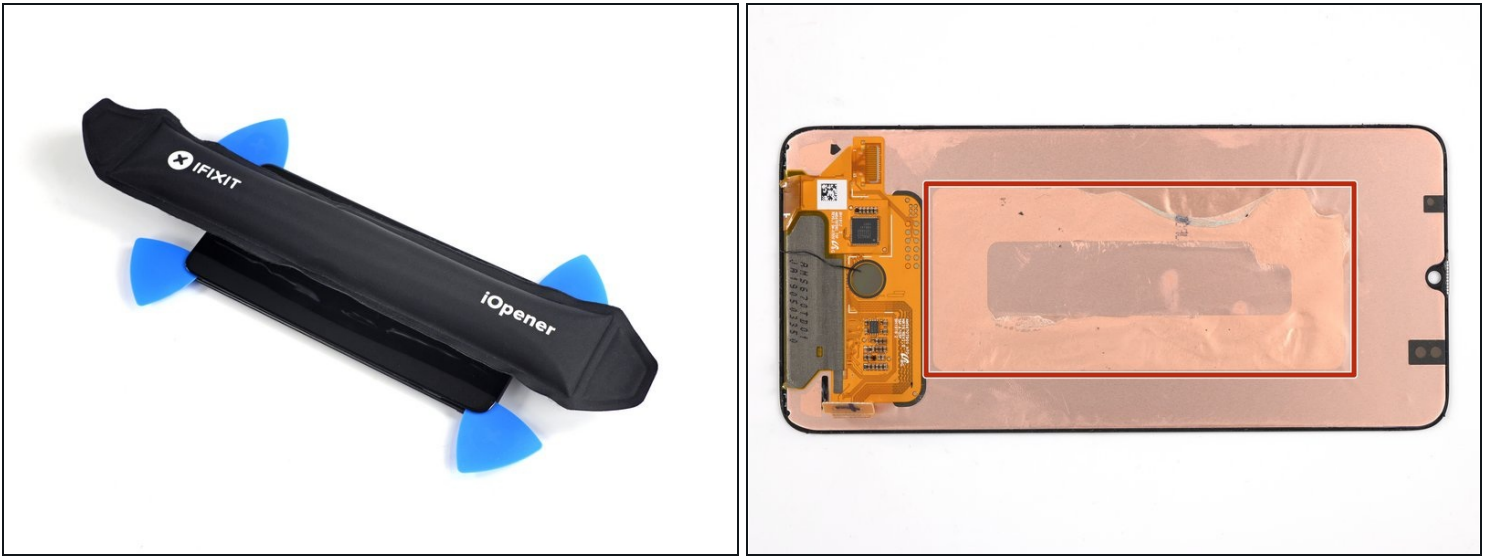
- Insert a fourth opening pick underneath the top left corner.
- Slide the opening pick along the left edge to cut the adhesive.
- Leave the opening pick in the bottom left corner to prevent the adhesive from resealing.

Step 24 — Slice the remaining adhesive



- Insert a fifth opening pick underneath the bottom left corner.
- Slide the opening pick along the bottom edge to cut the remaining adhesive.

Step 25 — Reapply a iOpener



- Reapply [a heated iOpener](#) to the screen to loosen the adhesive underneath.
 - The remaining adhesive holding the screen to the midframe is located in the center.
- ⚠ Do not use the plastic card underneath the bottom end of the screen in the following steps to avoid tearing the display flex cable.

Step 26 — Cut the adhesive



- Insert a [plastic card](#) on the left edge into the gap between display and the phone assembly.
- Press the plastic card in and slide it back and forth until you cut through the entire adhesive.
- Once you are sure you cut through the adhesive, remove the four opening picks from the corners.

⚠ Do not remove the screen completely yet. The display cable is still threaded through the midframe.

Step 27



- Carefully thread the display cable through the frame.

Step 28 — Remove the screen



- Remove the screen.

If possible, turn on your device and test your repair before installing new adhesive and resealing.

Compare your new replacement part to the original part—you may need to transfer remaining components or remove adhesive backings from the new part before installing.

To reassemble your device, follow these instructions in reverse order. Apply new adhesive where necessary after cleaning the relevant areas with isopropyl alcohol (>90%).

The best way to secure the new screen is to apply a sheet of custom-cut double-sided tape to the back of the screen.

Take your e-waste to an [R2 or e-Stewards certified recycler](#).

Repair didn't go as planned? Try some [basic troubleshooting](#), or ask our [Answers community](#) for help.