



RYOBI 404Y Leaf Blower Handle Replacement

This style leaf blower has an extra long handle with can become cracked near its base but can be replaced.

Written By: jtalbin



INTRODUCTION

Some hard use and an accidental drop caused the handle on this leaf blower to become cracked right at the base. It can be easily fixed.



TOOLS:

- [T15 Torx Screwdriver](#) (1)



PARTS:

- [HOMELITE RYOBI 311220001 Genuine Handle Assembly](#) (1)

Step 1 — Handle



- Pretty easy fix, can be done in 10-15 minutes.

Step 2



- This style of handle can become cracked at the base. In this case it was broken almost completely through and very weak, but it can be replaced. This

Step 3



- The replacement handle is listed as "HOMELITE RYOBI 311220001 Genuine Handle Assembly" and can be found at a couple of online parts sources. Currently (8/2021) available at Amazon, eReplacement parts & Parts Warehouse.

Step 4



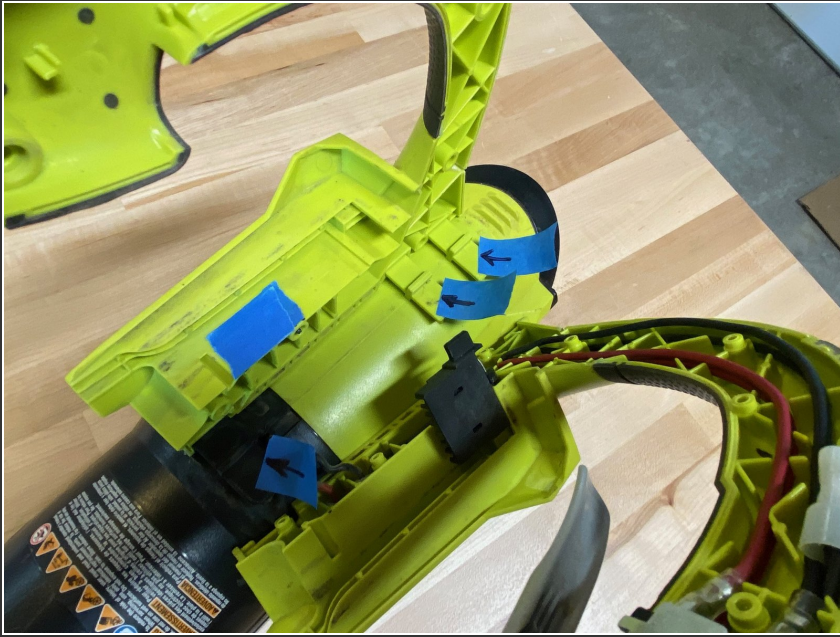
- Handle housing is a simple clamshell design.

Step 5



- I was able to open this without the use of prying tools.

Step 6



- This view shows you the 3 alignment tabs. (see arrows on blue tape in picture) The handle slides onto these tabs. There will be no other clips or tabs.

Step 7



- Wire routing is also simple. Wires are pushed into grooves in the handle. Remove wire harness and switch with a gentle tug. Reassemble in reverse order. You will notice that the screw positions have a male/female fit helping with alignment.

To reassemble your device, follow these instructions in reverse order.

Reinstall wire harness into handle.

Slide handle onto the 3 base tabs.

Reinstall 10 Torx screws.