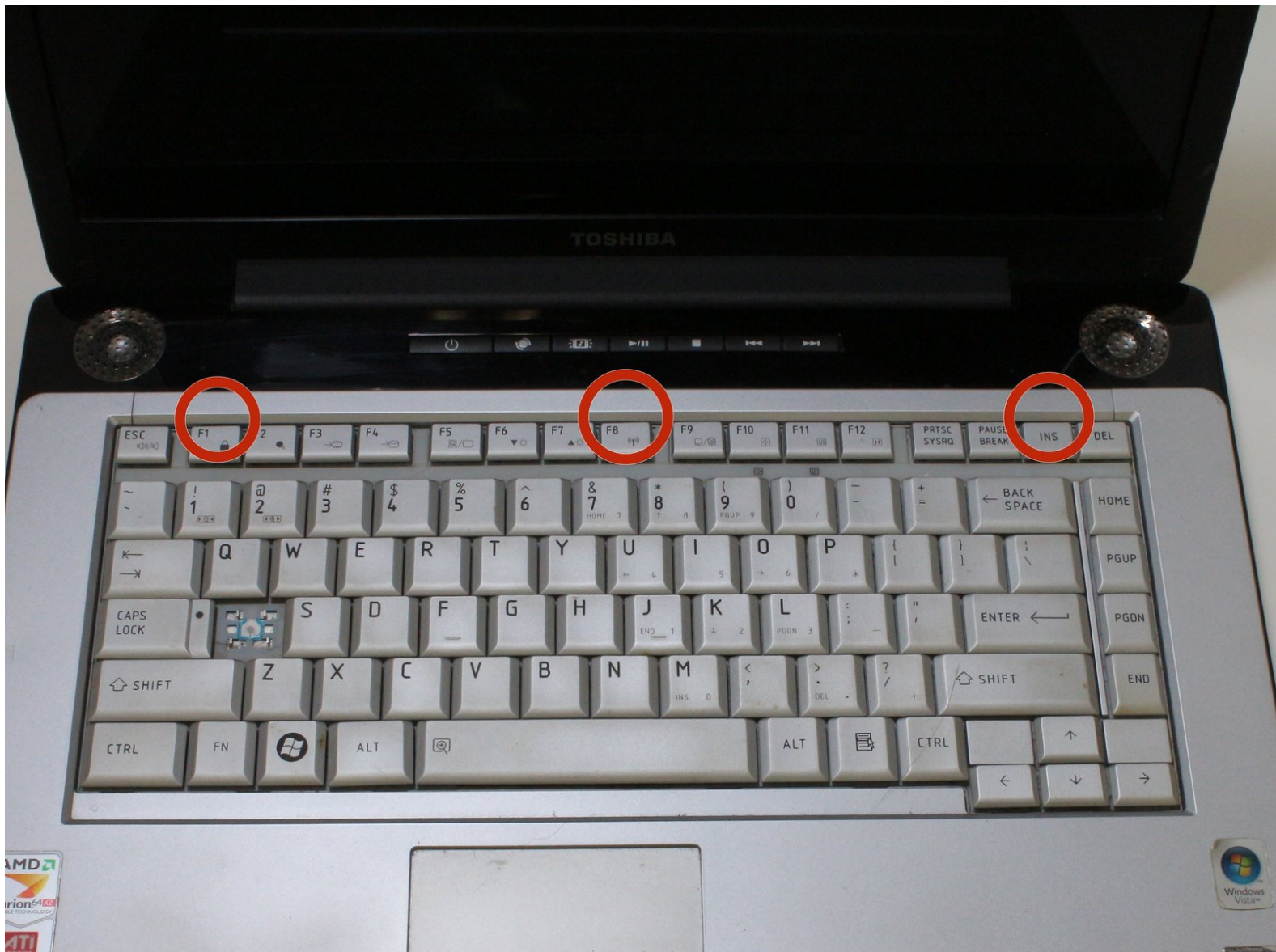




Toshiba Satellite A215 S4697 Keyboard Replacement

Is your keyboard broken? Got a new one to...

Written By: Joseph Gillum



INTRODUCTION

Is your keyboard broken? Got a new one to replace it with? We'll show you how!



TOOLS:

- [iFixit Opening Tool](#) (1)
 - [Tweezers](#) (1)
-

Step 1 — Battery



- Close the laptop and turn it over so that the base is facing upwards and the spine is facing away from you.
- Find the battery compartment.
- Slide the left slider which is just beneath the battery compartment into its leftmost position.

Step 2



- Slide and hold the right slider into its rightmost position. Lift the battery out of the compartment.
- Do not touch the gold nodes inside the compartment.

Step 3 — Optical Drive



- Turn computer over so that the battery compartment is facing up and is at the top.
- Locate and unscrew one captive Phillips #1 screw located at the center.
- ⓘ A captive screw cannot be completely removed from the device's component.

Step 4



- Use a plastic opening tool to open the motherboard access cover.

⚠ Do not touch the motherboard.

Step 5



- Remove one 1.5mm Phillips #1 screw located near the top left edge of the opening.

Step 6



- Flip your device right side up, and rotate it so that the optical drive is facing you.
- Insert a paper clip into a manual release switch located to the right of the automatic release button.
- ⓘ Optical Drive will not release if you insert the clip diagonally. Make sure to insert the clip straight into the switch.

Step 7



- Gently pull out the disk drive until you can see the metallic case of the optical drive.
- Hold the metal case and continue to pull the drive out toward you.

Step 8



- Once you see the yellow labels on the disk drive, fully retract the disk mount until you hear a click.

Step 9



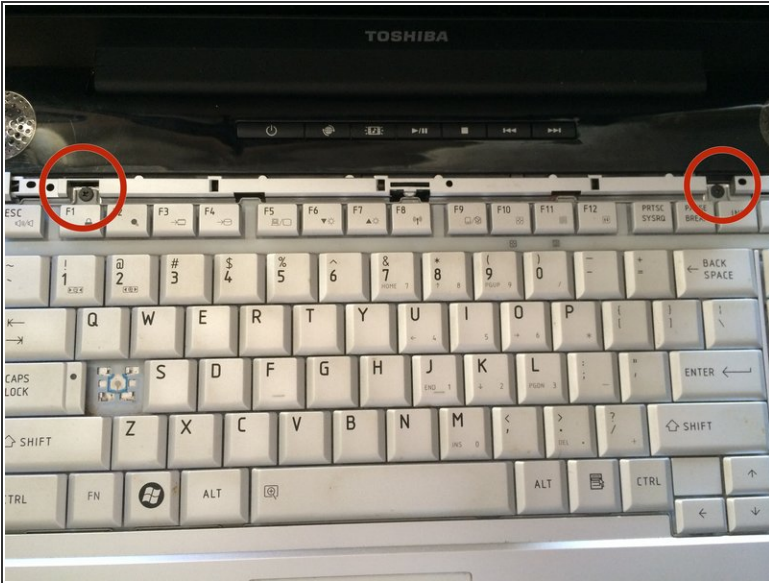
- Continue to pull the disk drive toward you until it is completely removed from the laptop's housing.

Step 10 — Keyboard



- Place laptop right side up on a flat and clean surface. Open the laptop.
- Find the strip just above the keyboard and locate the gaps behind the F1, F8, and Insert keys.
- Remove the strip by sticking your plastic opening tool into these gaps in order, and pulling up.

Step 11



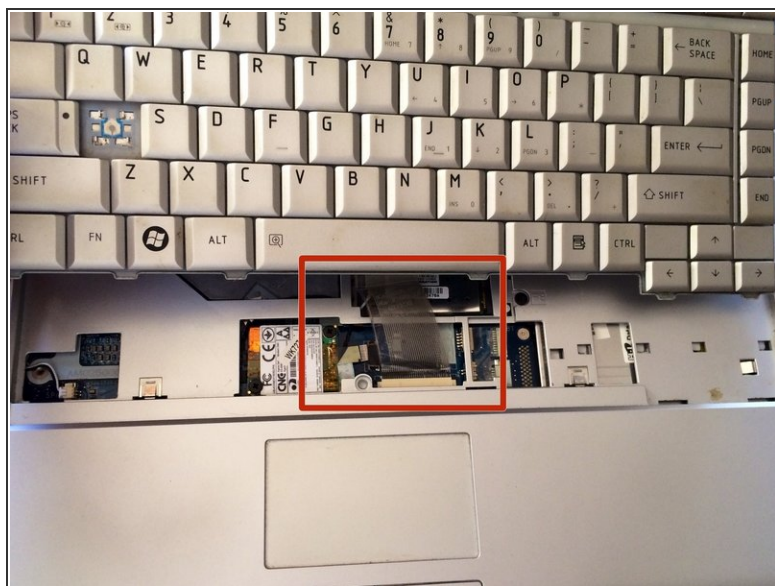
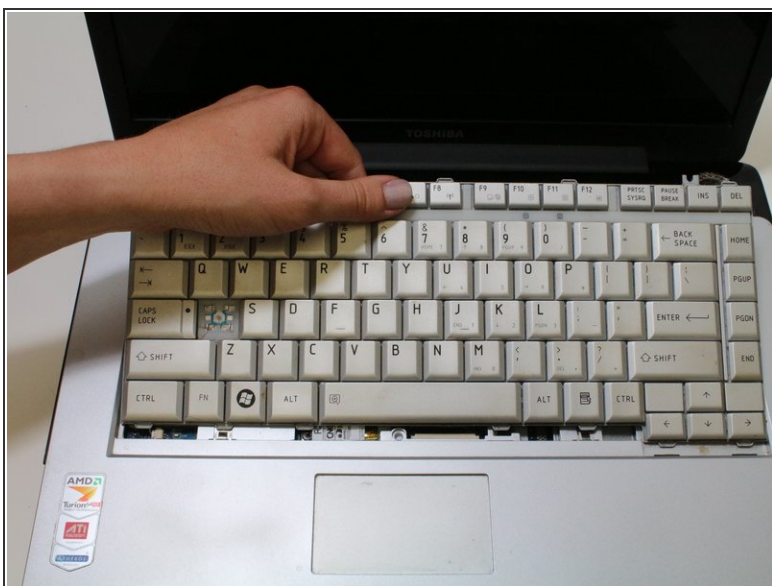
- Locate the two 2.3mm Phillips #1 screws at the top of the keyboard that attaches the keyboard to the frame behind it.
- Remove screws.

Step 12



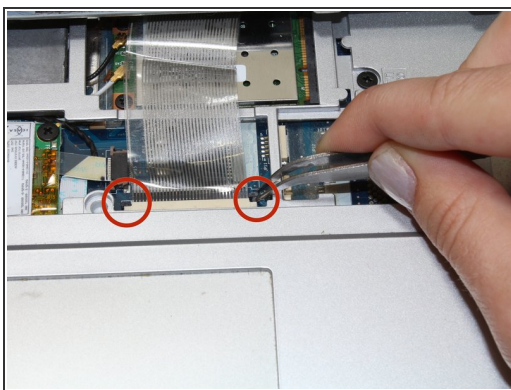
- Find the latch above the F8 key that overlaps the keyboard.
- i* Use a plastic opening tool to press the key board's tab downward, until the key board is released.

Step 13



- Pull the keyboard out by shifting it forward towards the screen and pulling up.
- CAUTION: Do not pull it out all the way yet. It is still attached to the laptop by a cable.

Step 14



- Find the ribbon cable that connects the keyboard to the laptop. Look for the black tabs on both sides of cable at the laptop end of the cable.
- Using a pair of tweezers, pull the black tabs on both sides of the cable connector towards the screen until the cable can be pulled out easily.
- Pull out the cable and completely remove the keyboard.

To reassemble your device, follow these instructions in reverse order.