

INTRODUCTION

In this guide the repairer replaces the auxiliary audio out port of the device by disassembling to expose the motherboard and desoldering the component.

Prerequisite Guide:

[Disassembling Garmin Nuvi 370 Into Core Components](#)

Tools Used:

- Fine Point Tweezers
- Spudger
- Soldering Iron
- Solder Extraction Tool
 - Copper Braid
 - Solder Sucker

Estimated Duration: 15 minutes

TOOLS:

[Tweezers](#) (1)

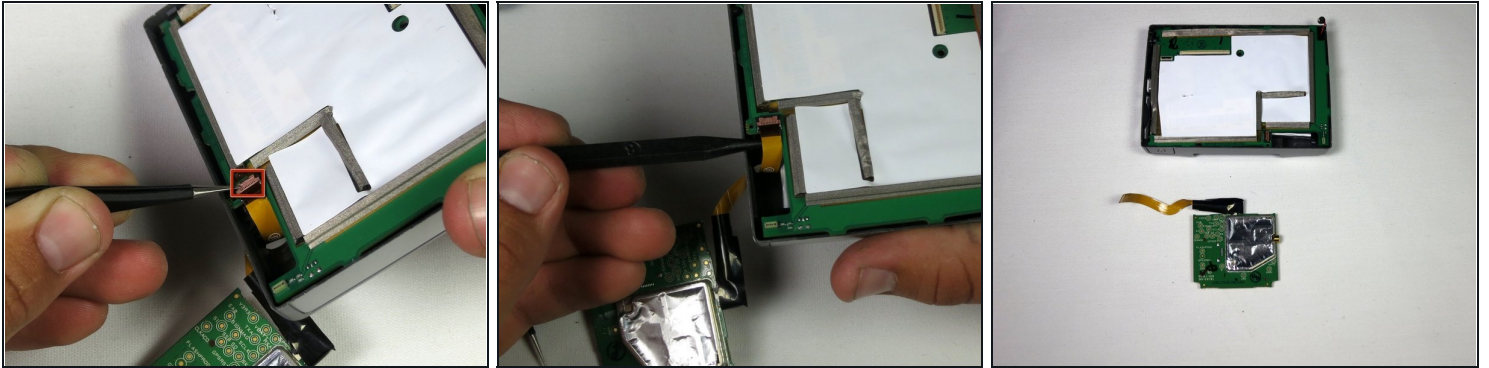
[Soldering Workstation](#) (1)

Step 1 — Auxiliary Audio Out Port



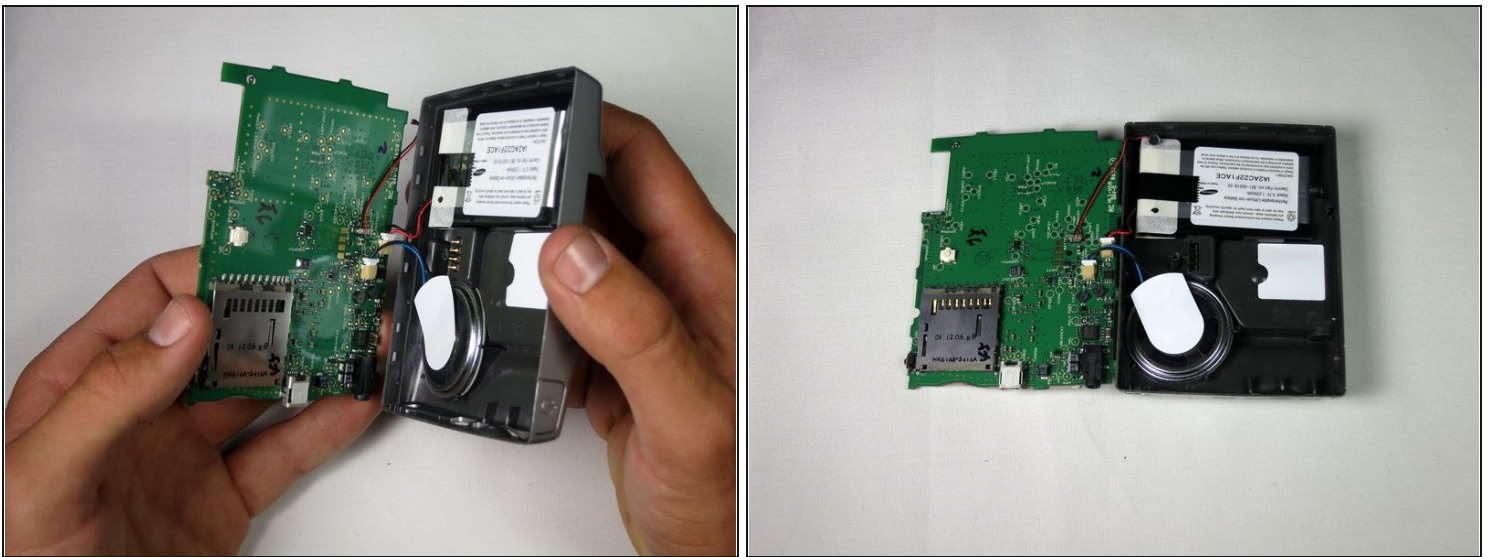
- After following the instructions in the [main dis-assembly guide](#), you should have the screen detached from the motherboard.

Step 2



- Use the [tweezers](#) or the spudger to lift the tan latch off the ribbon cable (ZIF connector) and gently pull out the ZIF connector and cable from underneath the opened latch.

Step 3



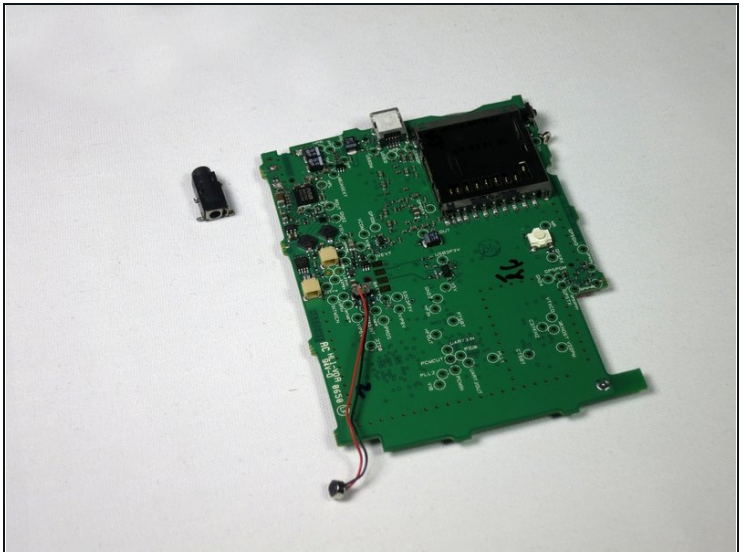
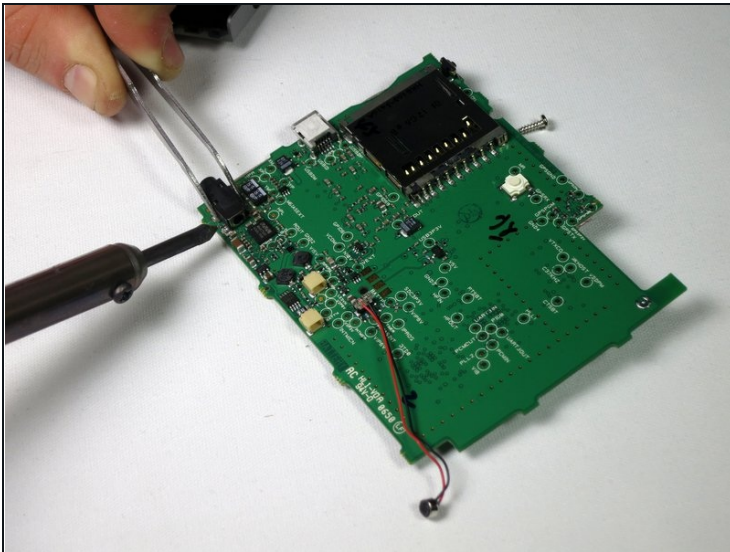
- The motherboard will now freely separate from the back casing; lay it flat next to the housing.

Step 4



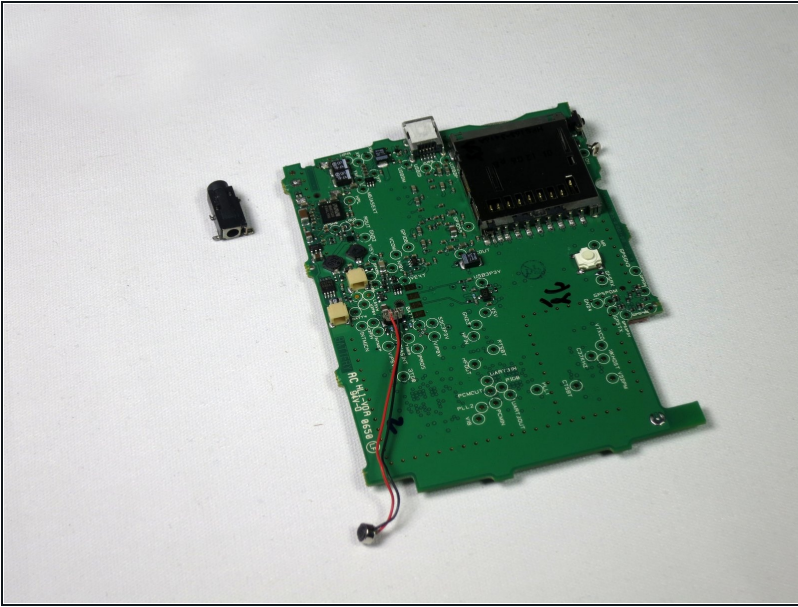
- Disconnect the speaker and battery from their terminals on the motherboard. This should disconnect the motherboard completely from the back panel.
 - ☑ If necessary, use tweezers or the spudger for precision.

Step 5



- De-solder the audio out port. Use a soldering iron to melt the solder on each of the leads of the port and a solder extraction tool (not shown), such as a [solder sucker](#) or copper braid.
 - ☑ Use tweezers to grab the port for greater protection and precision.

Step 6



- The audio out port should now be completely separated from all other components.
- Solder new, functional audio port. Make sure all solder connections are clean.

To reassemble your device, follow these instructions in reverse order.