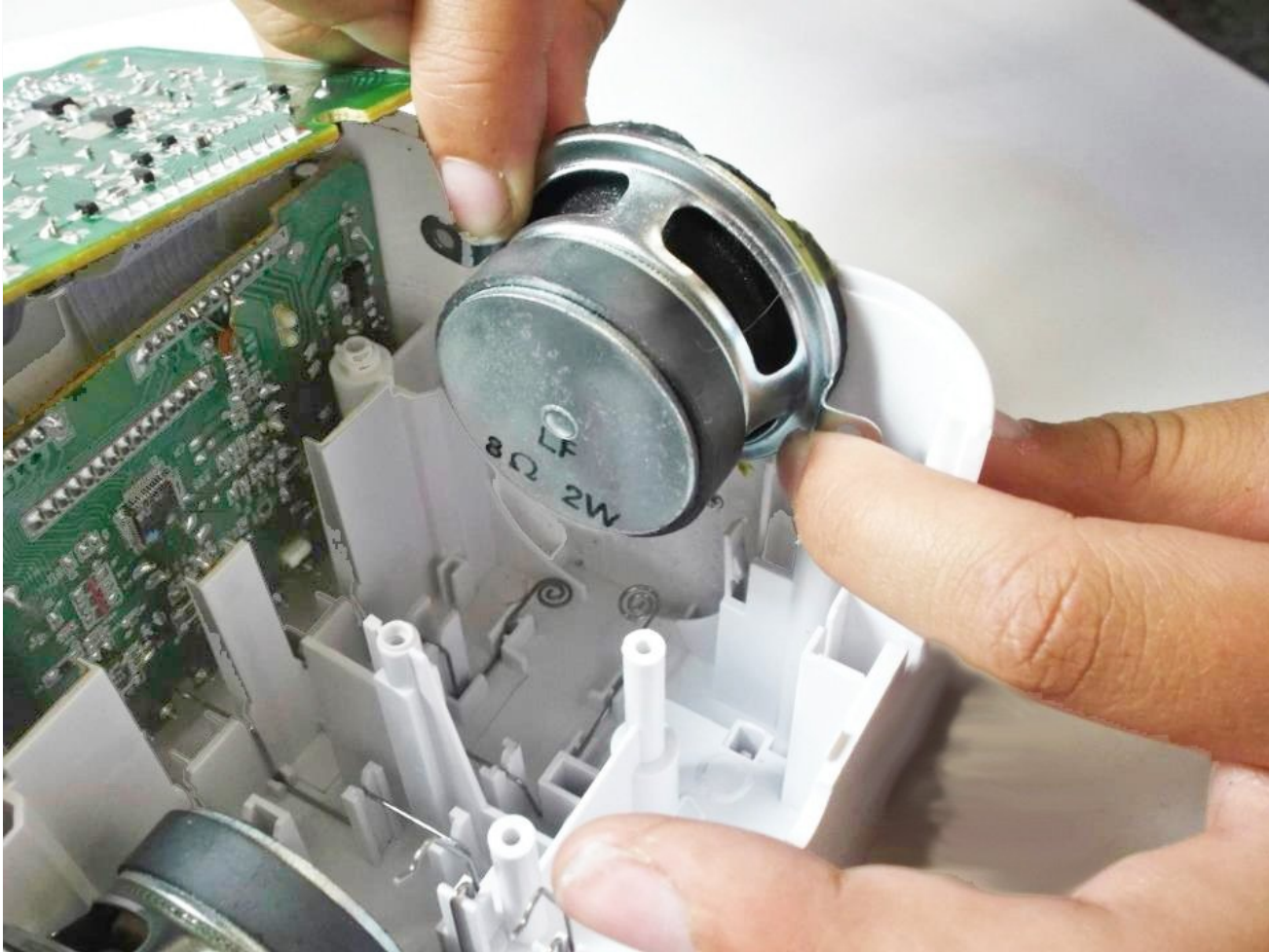




Audiovox CR8030iE5 Speakers Replacement

If the speaker in your Audiovox CR8030iE5 is no...

Written By: Nab Sengupta



INTRODUCTION

If the speaker in your Audiovox CR8030iE5 is no longer functioning, it's likely that you have a faulty speaker that needs to be changed. The speaker is a crucial component of your device. Its primary function is to emit sound to alert or wake up a user at a predetermined time.

This guide will walk you through the steps to replace a faulty speaker and install a new one. Please note that each speaker contains a powerful magnet; exercise caution by keeping it away from any nearby metal objects.

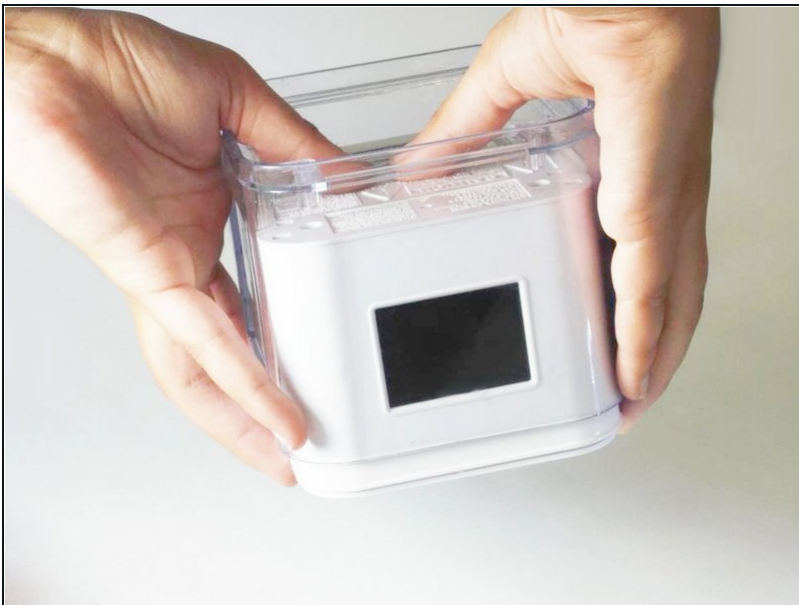
TOOLS:

[Phillips #1 Screwdriver](#) (1)

[iFixit Opening Tool](#) (1)

[Phillips #00 Screwdriver](#) (1)

Step 1 — Top-Casing



- Turn the device upside down.
- Apply constant pressure to the base of your Audiovox, while holding the plastic casing until the casing is completely removed.

Step 2



- Remove the four screws from the base using a Phillips #1 screwdriver.

Step 3



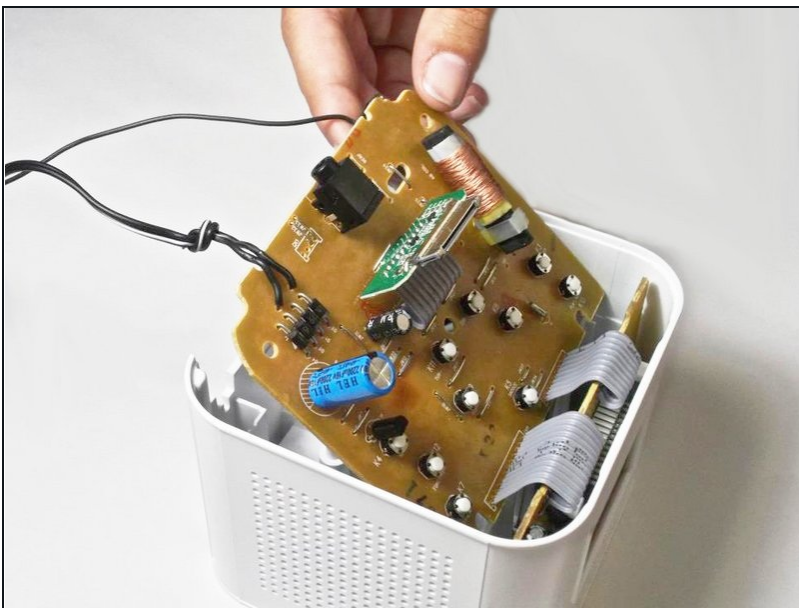
- Turn the device right-side up.
- Gently pull the top panel off of the device.

Step 4



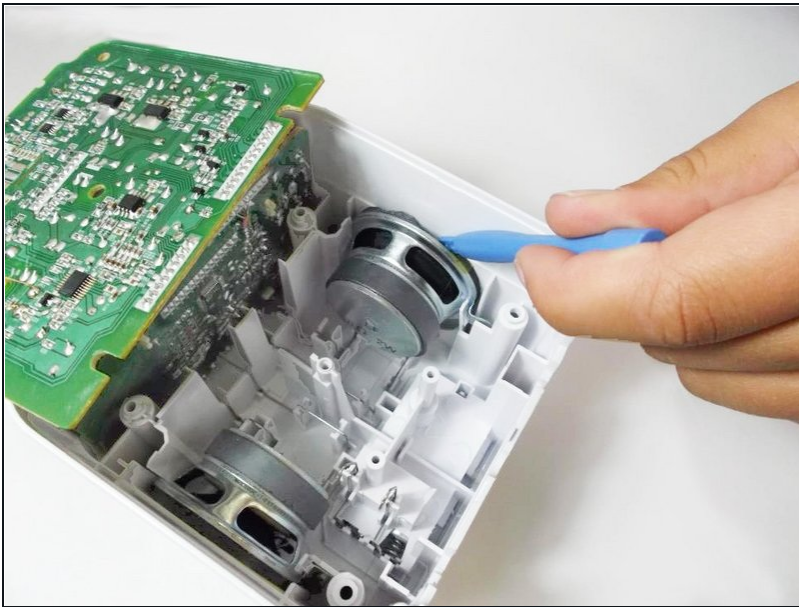
- Using a Phillips #1 screwdriver, remove the screw found in the middle of the board.

Step 5



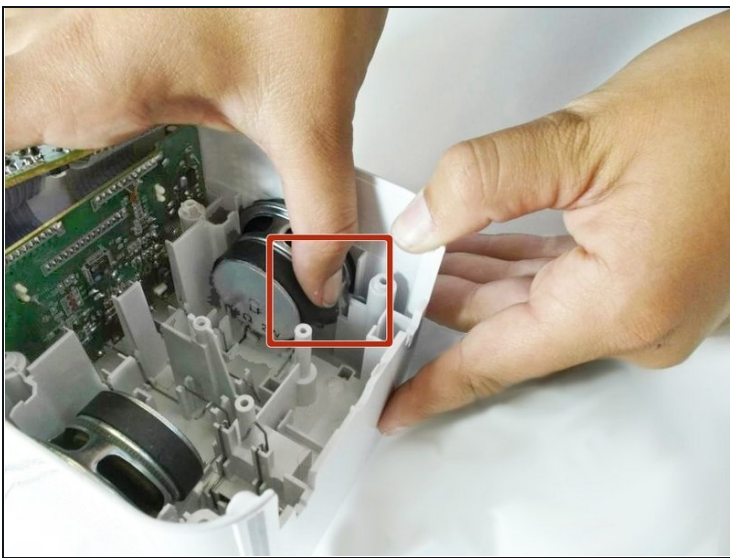
- Pull back the board gently to avoid disconnecting the attached wires.
- ⓘ This allows you to view the soldered connections on the other side, and the internal components.

Step 6 — Speakers



- ① Notice that there are two speakers located on opposite sides of the inside of your Audiovox.
- Slide a plastic opening tool along the rim of the faulty speaker where it meets the plastic casing.
- ① This action removes any glue or adhesive that holds the speaker to the wall of your Audiovox.

Step 7



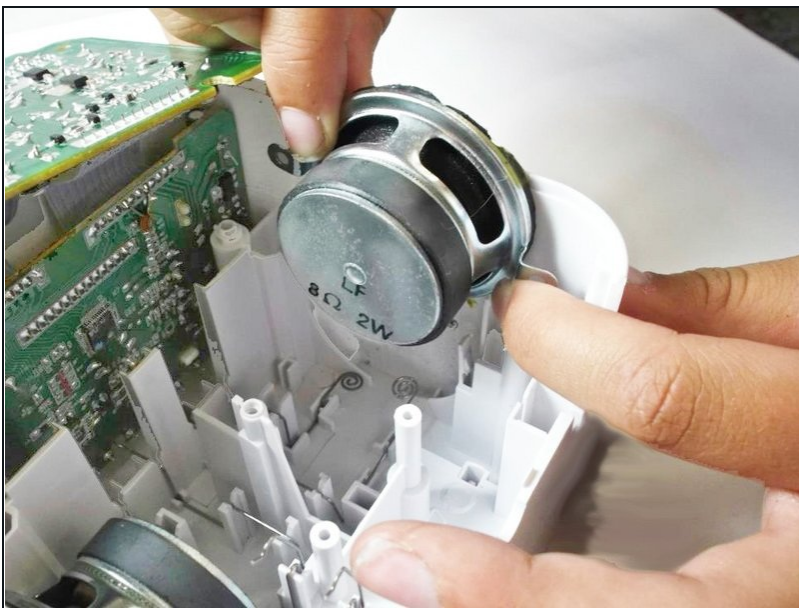
- Using your thumb, applying constant pressure, pull back the plastic tab towards the speaker and away from the metal bracket.
- Simultaneously insert a Phillips #00 screwdriver into the square hole on the underside of clock and push through to lift the metal bracket off of the plastic tab.

Step 8



- Repeat the second part of "Step 7" for the other hole.

Step 9



- Pull up on the metal brackets, found on either side, until the speaker is completely removed. Removing the speaker is rather challenging. Don't get discouraged if it takes multiple attempts!

⚠ Each speaker contains a powerful magnet. Try to keep them away from nearby metal objects.

To reassemble your device, follow these instructions in reverse order.