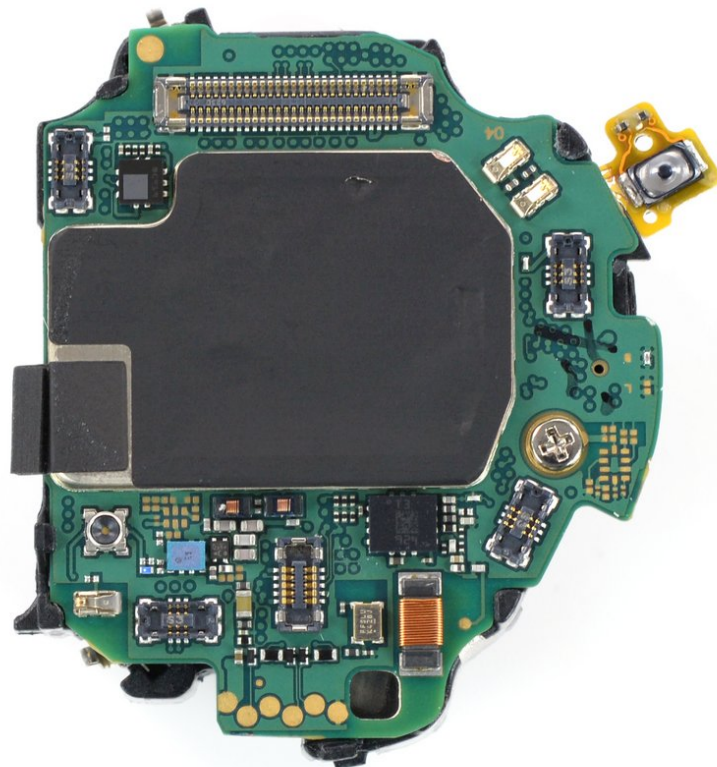




Samsung Galaxy Watch Active2 Motherboard Replacement

How to replace a defective motherboard in your Samsung Galaxy Watch Active2.

Written By: Tobias Isakeit



INTRODUCTION

Use this guide to replace a defective motherboard in your Samsung Galaxy Watch Active2.



TOOLS:

- [Tri-point Y00 Screwdriver](#) (1)
 - [iFixit Opening Picks \(Set of 6\)](#) (1)
 - [Spudger](#) (1)
 - [Phillips #00 Screwdriver](#) (1)
-

Step 1 — Turn off the watch



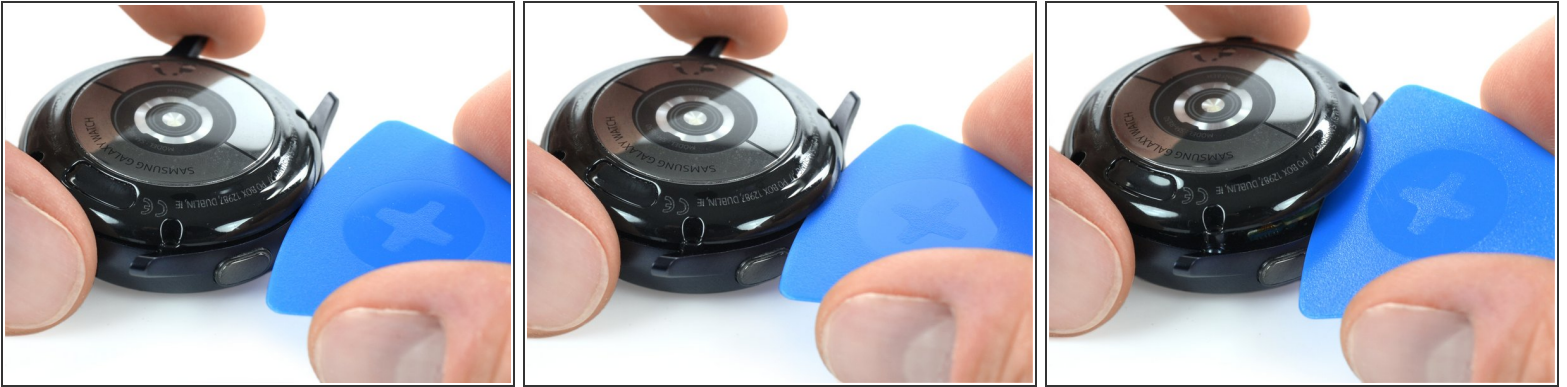
- Turn off the Galaxy Watch Active2 by pushing and holding the bottom button for approximately 3 seconds. You should feel a short vibration.
- When the "Power off" symbol appears, tap the center of the screen to make it shut down. You should feel a longer vibration for confirmation.

Step 2 — Remove the rear screws



- Use a Tri-point Y00 screwdriver to remove the four 4 mm-long screws on the back of the watch.

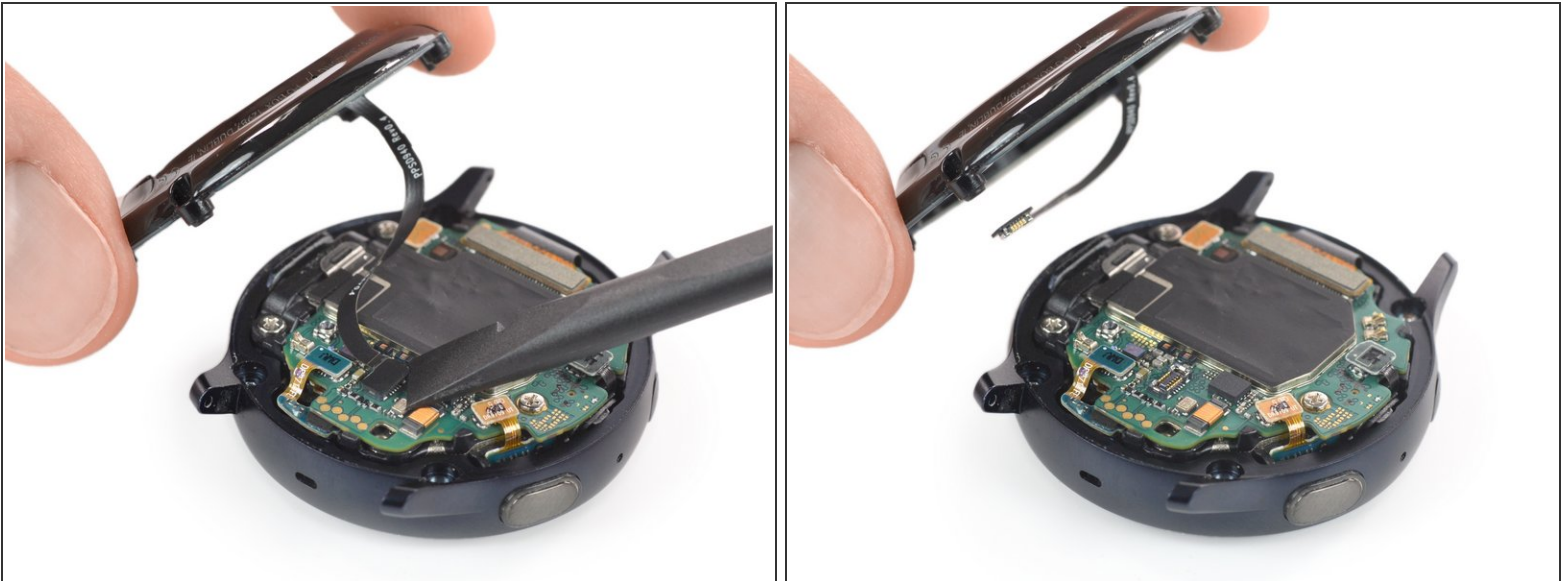
Step 3 — Separate the back cover from the housing



- Use an opening pick and place it between the plastic back cover and the metal housing near the buttons.
- Push the opening pick into the gap to separate the back cover from the housing.

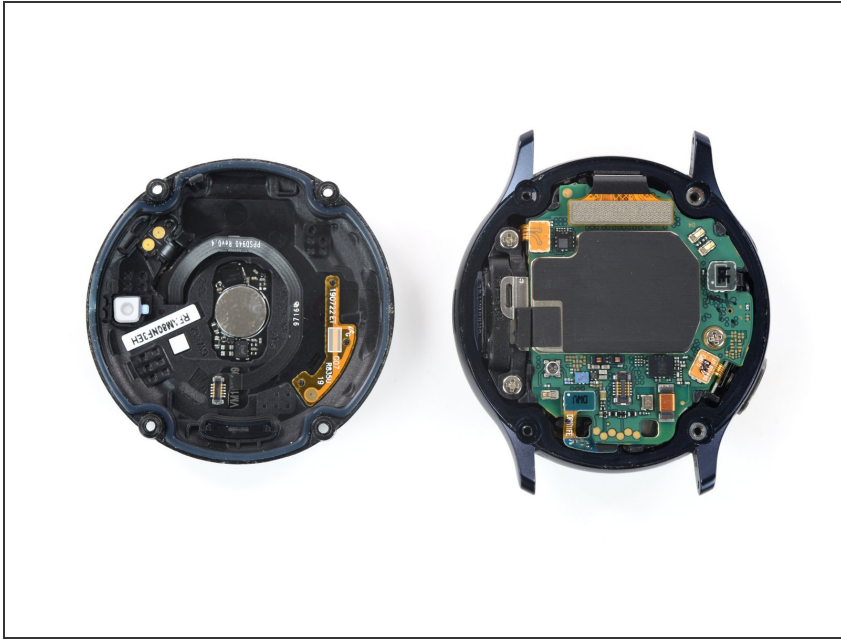
⚠ Don't remove the back cover all the way yet. There is a cable connecting it to the motherboard.

Step 4 — Disconnect the sensor array



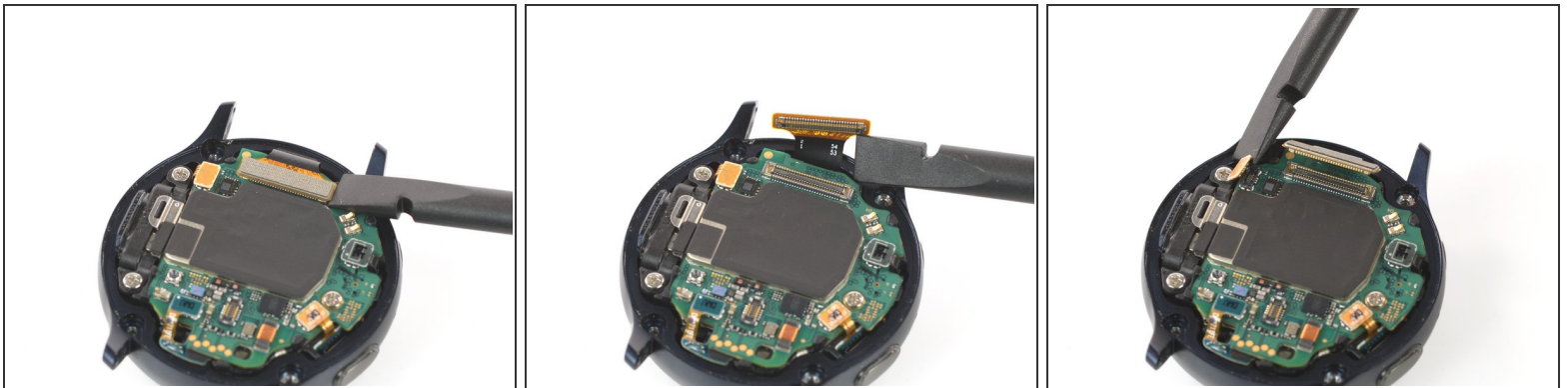
- Carefully lift the back cover to access the sensor array connector.
- Use a spudger to disconnect the sensor array from the motherboard.

Step 5 — Remove the back cover



- Remove the back cover.

Step 6 — Disconnect the display and speaker



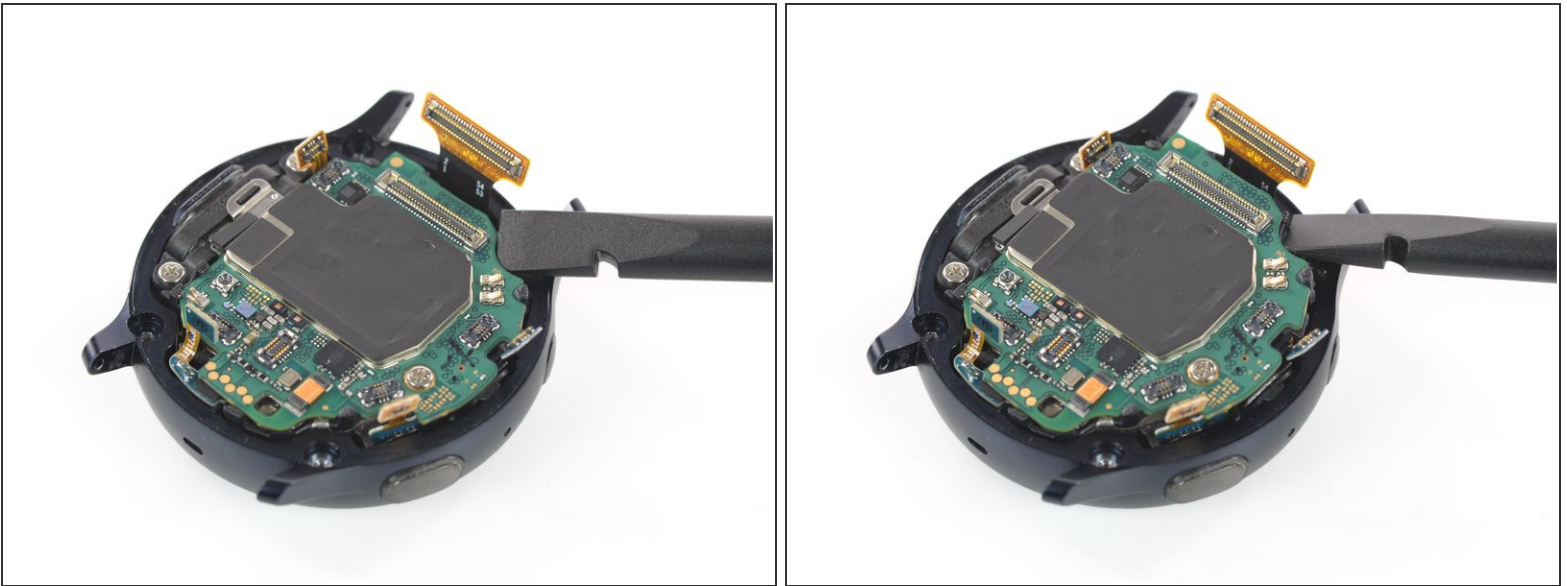
- Use a spudger to disconnect the display assembly and the speaker.

Step 7 — Disconnect the barometric sensor, buttons, and mic



- Use a spudger to disconnect the barometric sensor, the buttons, and the microphone.

Step 8 — Lift the core assembly



- Place a spudger underneath the motherboard at the top right next to the display connector.
- Slightly twist and lever the spudger to loosen the core assembly.

 It might help to also check the comments below this and the next step if you're having difficulties.

Step 9 — Remove the core assembly



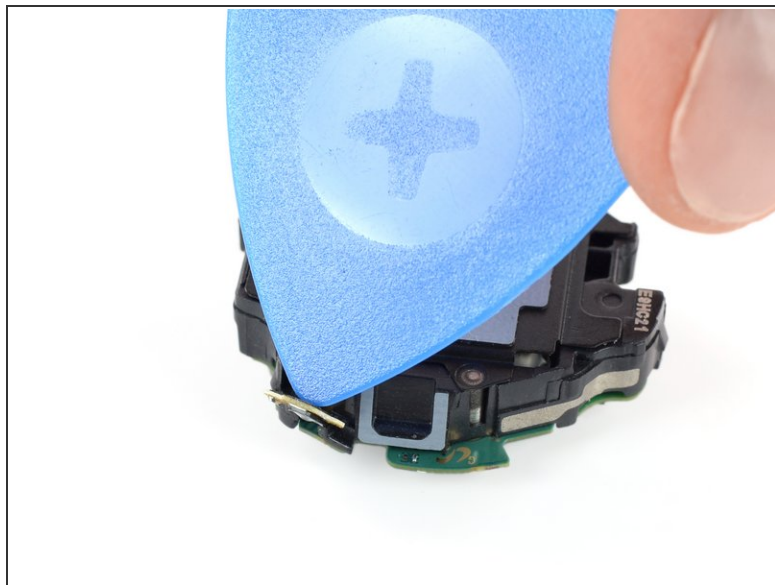
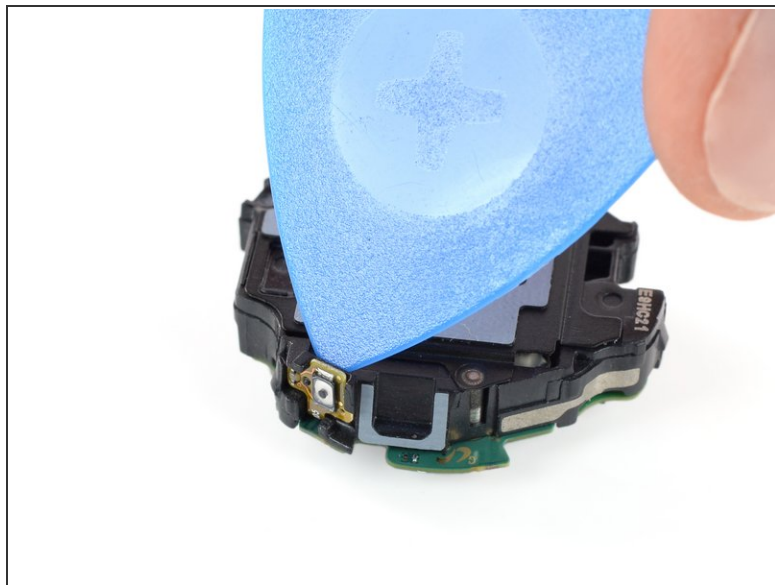
- Grab the core assembly and carefully slide it out from under the cables.
- Remove the core assembly.

Step 10 — Flip the Core Assembly



- Flip the core assembly over so the motherboard faces down.

Step 11 — Undo the top button



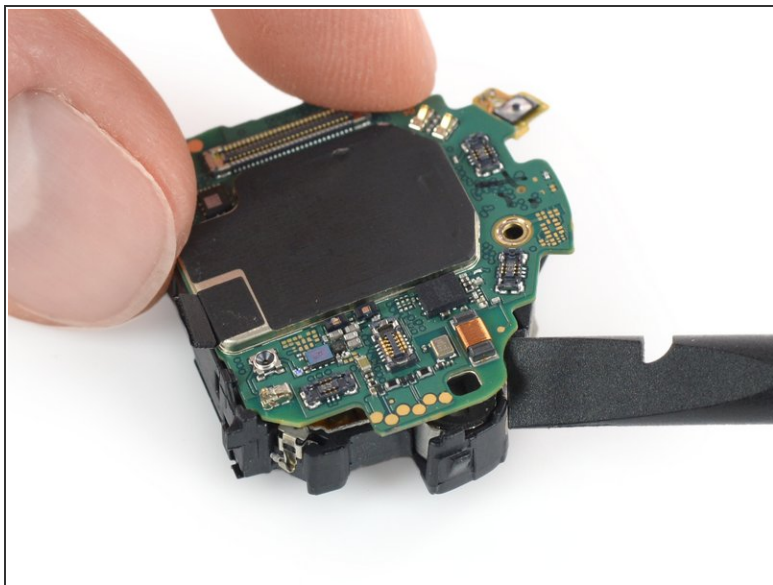
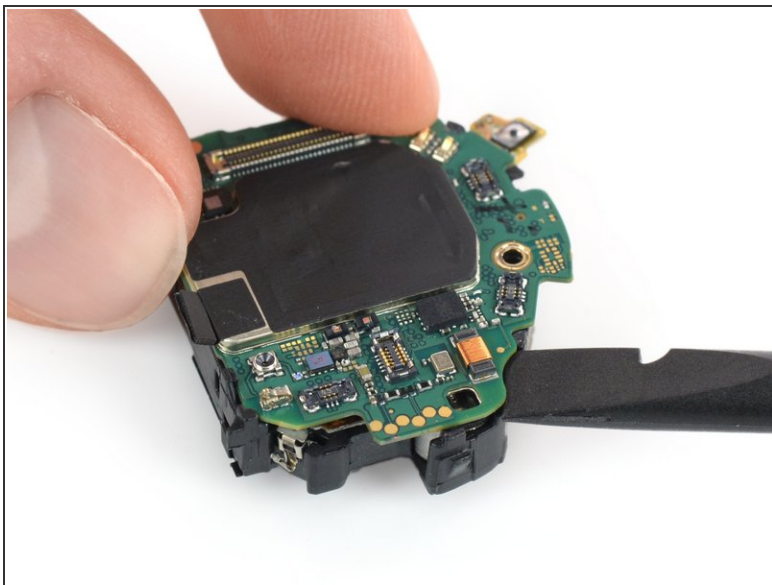
- Use the tip of an opening pick to peel the top button off the plastic frame.

Step 12 — Remove the motherboard screw



- Use a Phillips screwdriver to remove the 4.4 mm-long screw holding the motherboard in place.

Step 13 — Free the motherboard



- Place the flat end of a spudger between the motherboard and the plastic frame near the copper coil at the bottom right.
- Twist the spudger to free the motherboard from the plastic tabs.

Step 14 — Remove the motherboard



- Slide the motherboard out from under the remaining plastic tabs to remove it.

Compare your new replacement part to the original part—you may need to transfer remaining components or remove adhesive backings from the new part before installing.

To reassemble your device, follow these instructions in reverse order.

Take your e-waste to an [R2 or e-Stewards certified recycler](#).

Repair didn't go as planned? Try some [basic troubleshooting](#), or ask our [Answers community](#) for help.