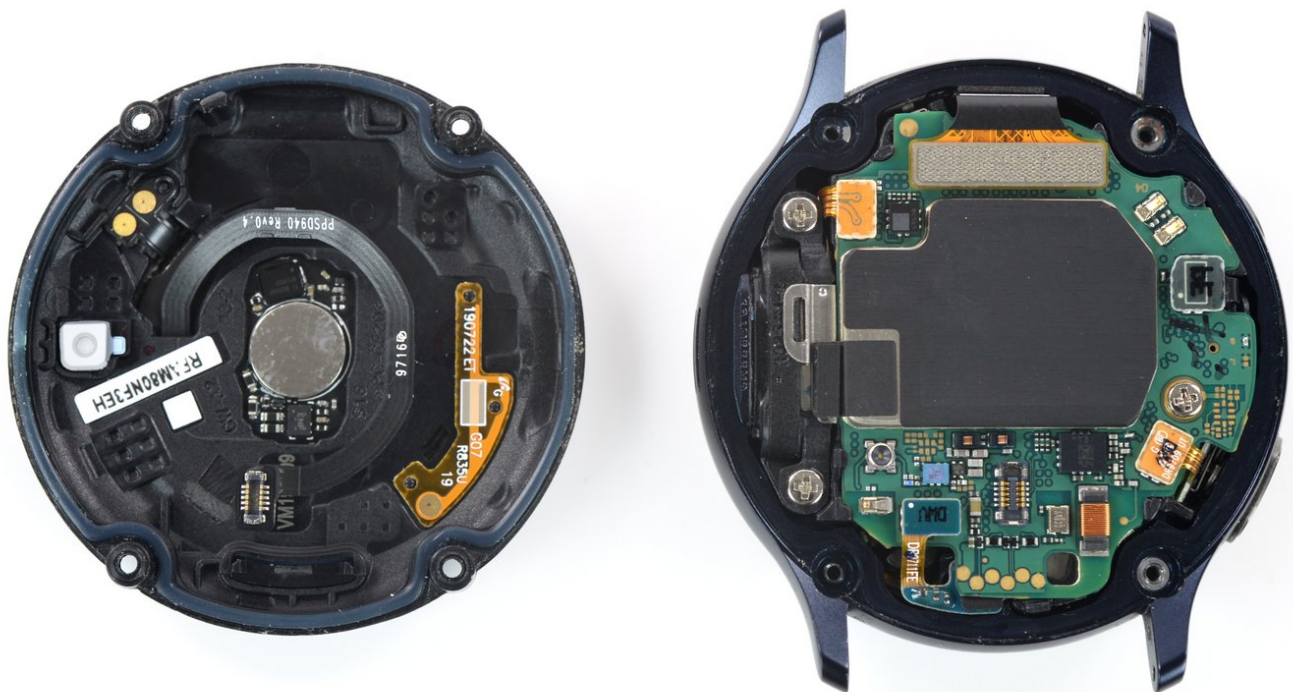




# Samsung Galaxy Watch Active2 Back Cover Replacement

How to replace a defective back cover of your Samsung Galaxy Watch Active2 for repairs or just opening the smartwatch.

Written By: Tobias Isakeit



---

## INTRODUCTION

Use this guide to replace a defective back cover of your Samsung Galaxy Watch Active2. You can also use this guide to open your smartwatch for any other repair.



### TOOLS:

- [Tri-point Y00 Screwdriver](#) (1)
  - [iFixit Opening Picks set of 6](#) (1)
  - [Spudger](#) (1)
-

## Step 1 — Turn off the watch



- Turn off the Galaxy Watch Active2 by pushing and holding the bottom button for approximately 3 seconds. You should feel a short vibration.
- When the "Power off" symbol appears, tap the center of the screen to make it shut down. You should feel a longer vibration for confirmation.

## Step 2 — Remove the rear screws



- Use a Tri-point Y00 screwdriver to remove the four 4 mm-long screws on the back of the watch.

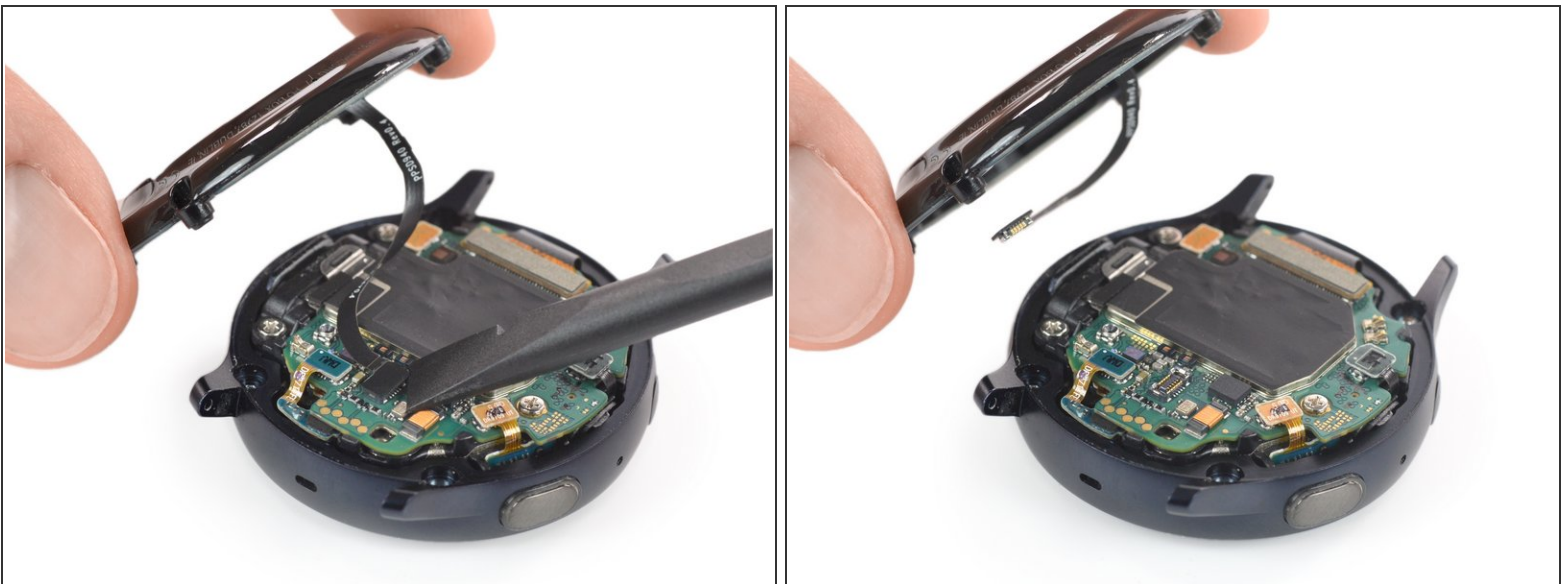
### Step 3 — Separate the back cover from the housing



- Use an opening pick and place it between the plastic back cover and the metal housing near the buttons.
- Push the opening pick into the gap to separate the back cover from the housing.

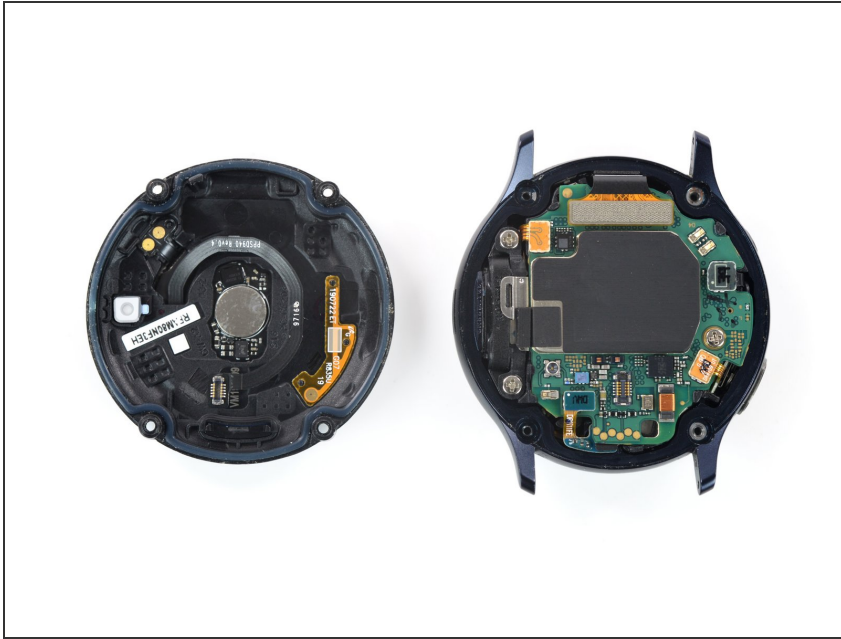
⚠ Don't remove the back cover all the way yet. There is a cable connecting it to the motherboard.

### Step 4 — Disconnect the sensor array



- Carefully lift the back cover to access the sensor array connector.
- Use a spudger to disconnect the sensor array from the motherboard.

## Step 5 — Remove the back cover



- Remove the back cover.

To reassemble your device, follow these instructions in reverse order.

Repair didn't go as planned? Try some [basic troubleshooting](#), or ask our [Answers community](#) for help.