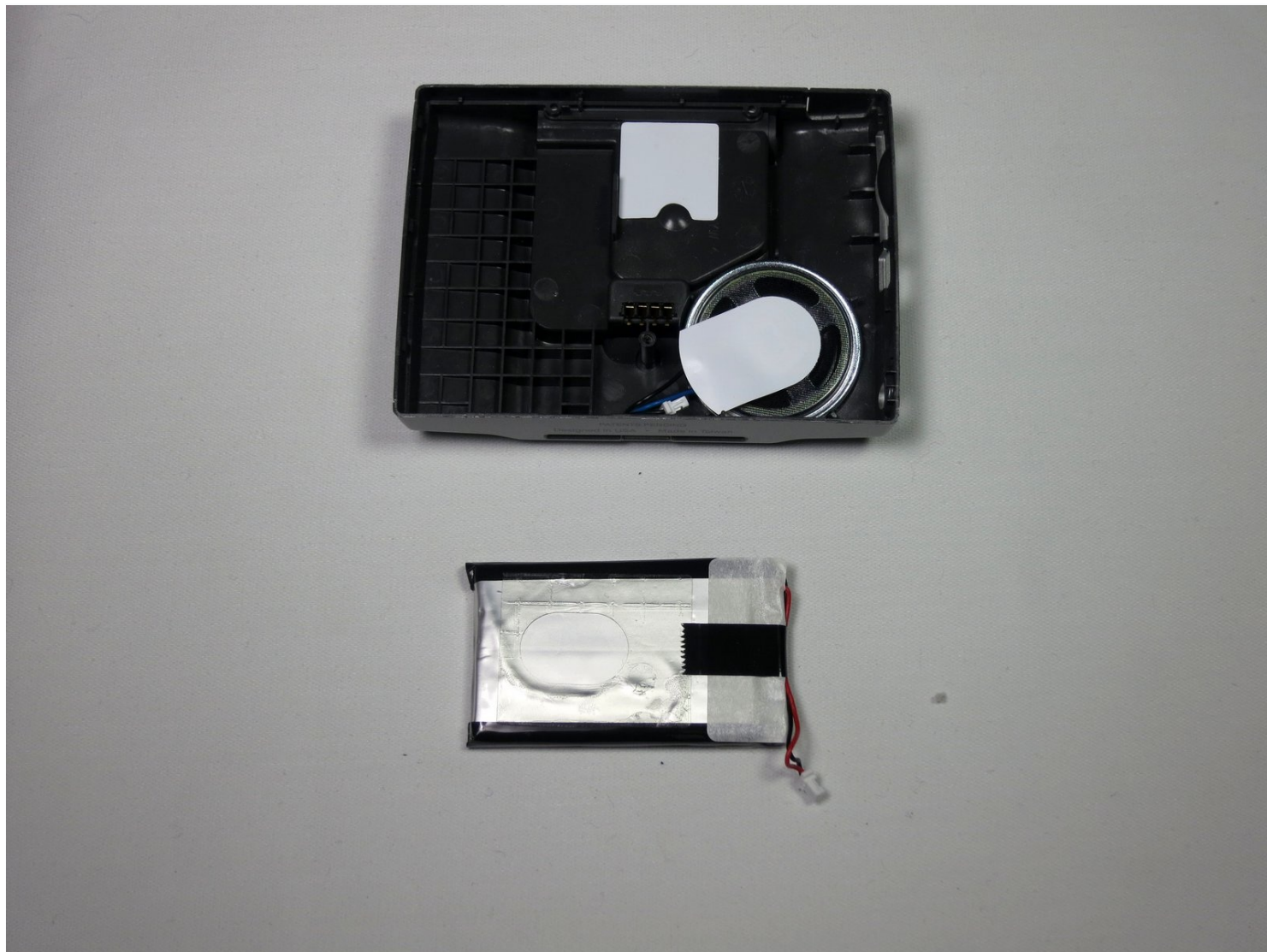




# Garmin Nüvi 370 Battery Replacement

In this guide the repairer replaces the battery...

Written By: poopspeedstream



# INTRODUCTION

In this guide the repairer replaces the battery of the device by disassembling it to expose the motherboard, which in turn allows access to the battery.

## Prerequisite Guide:

[Disassembling Garmin Nuvi 370 Into Core Components](#)

## Tools Used:

- Fine Point Tweezers
- Spudger

**Estimated Duration:** 10 minutes

---

### TOOLS:

[Tweezers](#) (1)

[Spudger](#) (1)

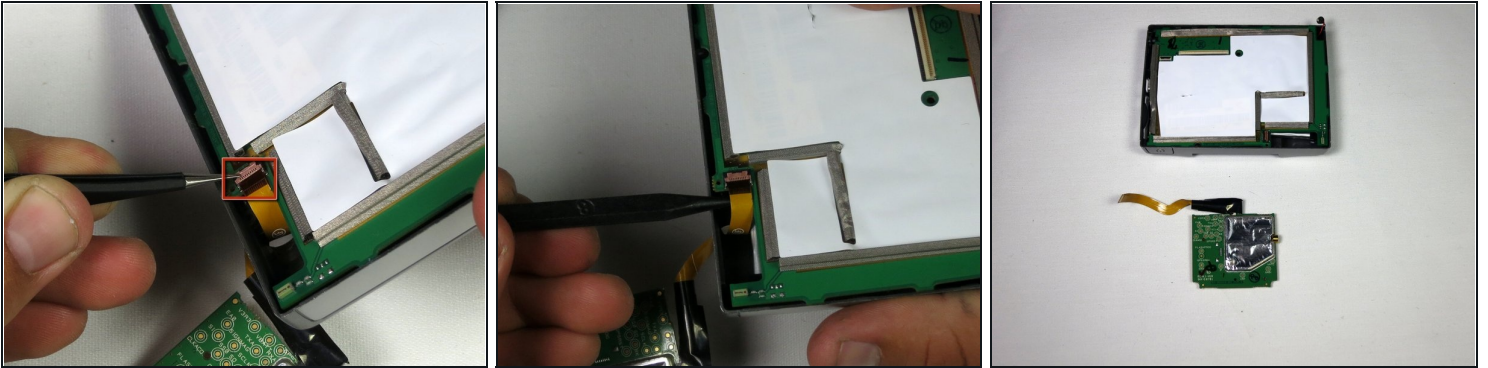
---

## Step 1 — Battery



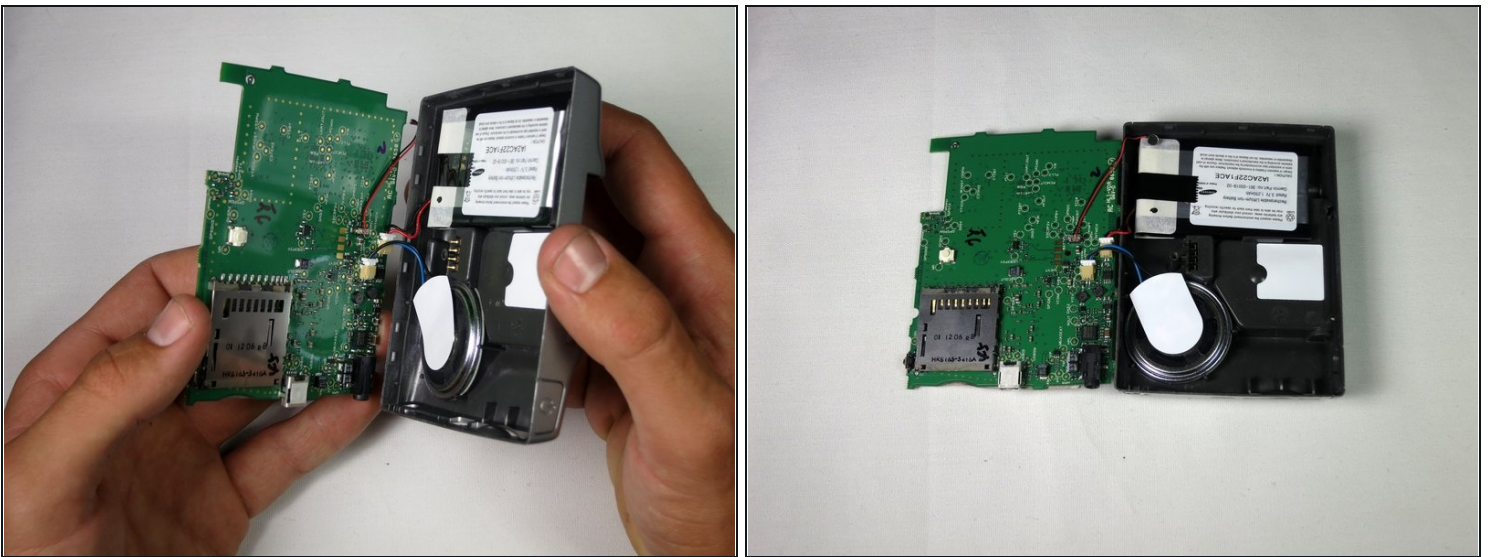
- After following the instructions in the [main dis-assembly guide](#), you should have the screen detached from the motherboard.

## Step 2



- Use the [tweezers](#) or the spudger to lift the tan latch off the ribbon cable (ZIF connector) and gently pull out the ZIF connector and cable from underneath the opened latch.

## Step 3



- The motherboard will now freely separate from the back casing; lay it flat next to the housing.

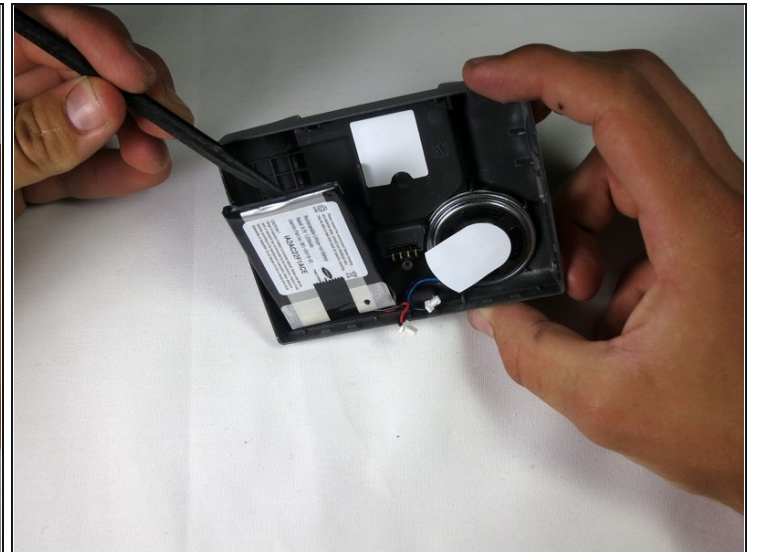
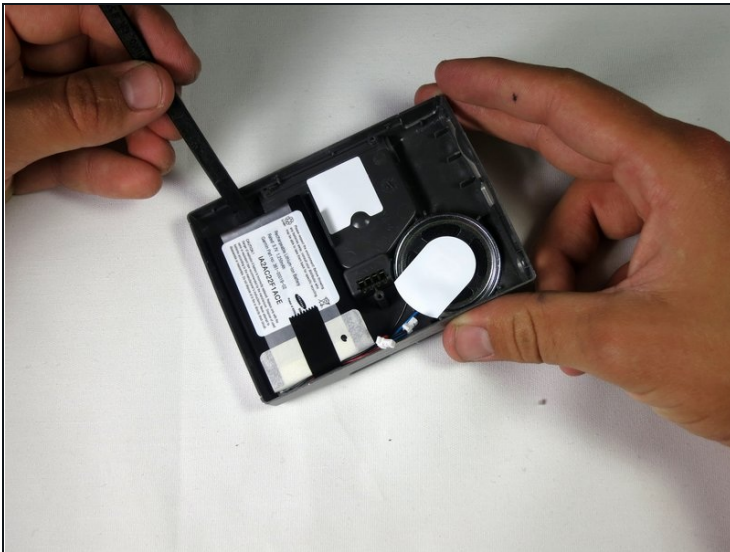


## Step 4



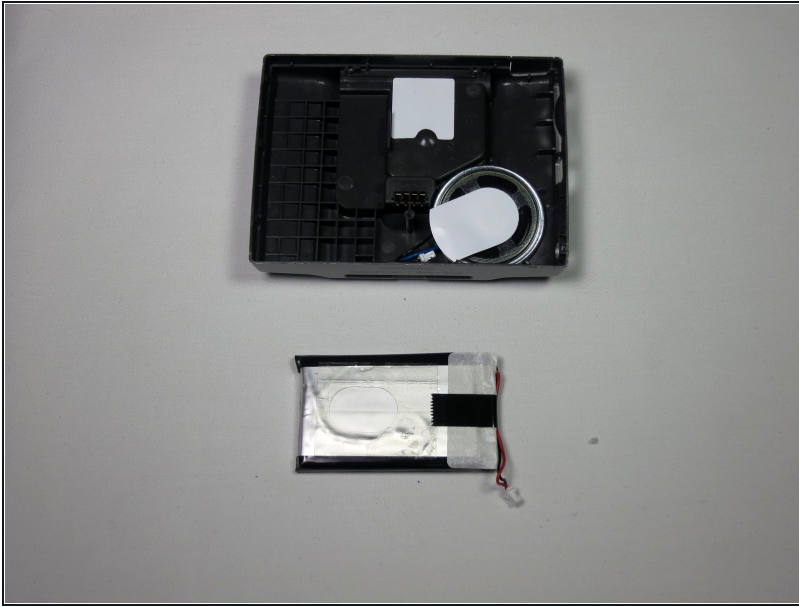
- Disconnect the speaker and battery from their terminals on the motherboard. This should disconnect the motherboard completely from the back panel.
- It is recommended that you use tweezers or the spudger for precision.

## Step 5



- Using the flat edge of the spudger from above, gently pry the battery away from the plastic.

## Step 6



- The battery should now be completely separated from the other components.
- Insert new, functional battery.

---

To reassemble your device, follow these instructions in reverse order.