

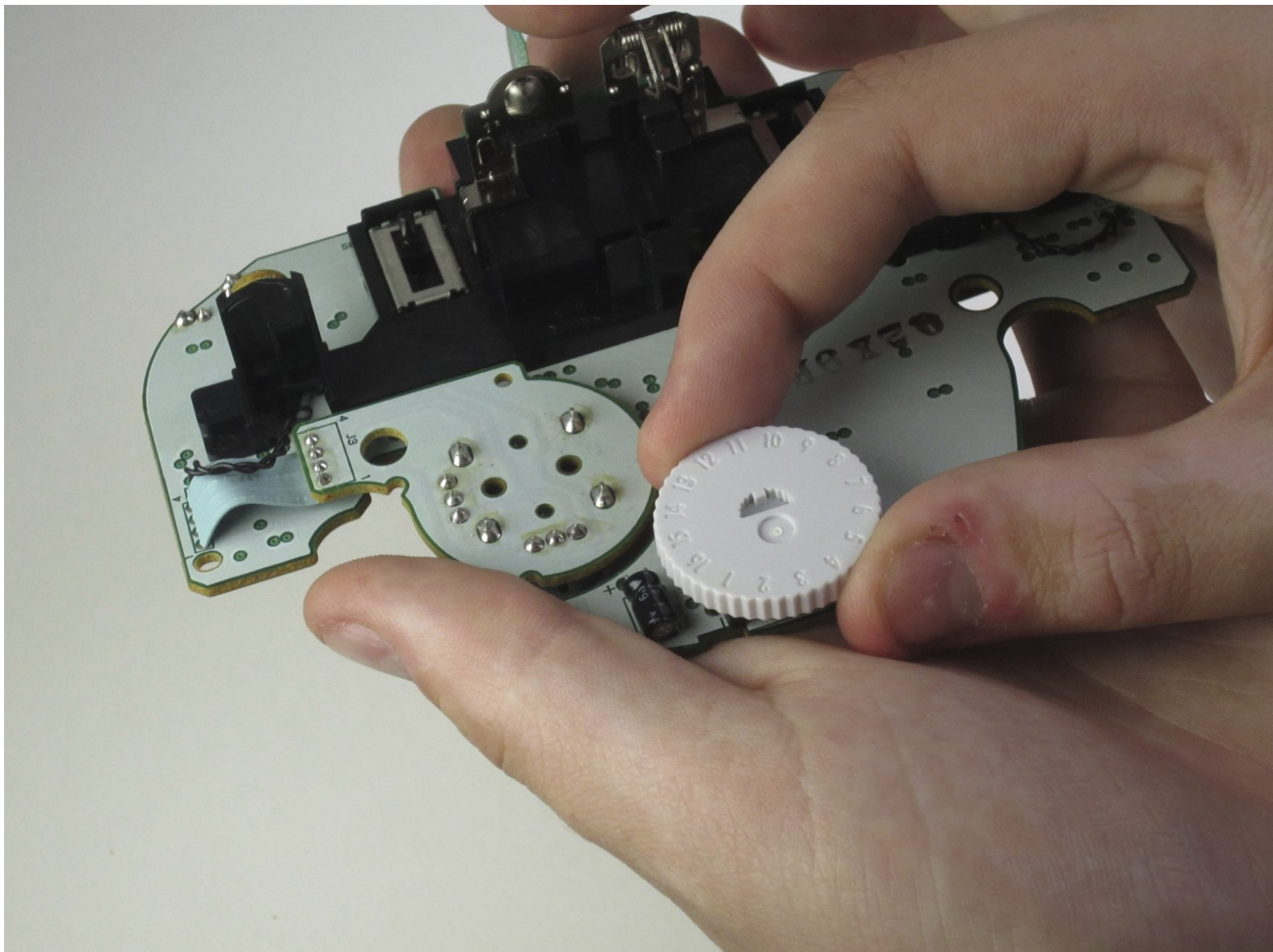


# Nintendo WaveBird Wireless Controller

## Channel Wheel Replacement

How to replace the channel wheel from the Nintendo WaveBird Wireless Controller.

Written By: Travis Taylor



---

## INTRODUCTION

The Nintendo WaveBird wireless controller channel wheel guide will allow the user to change the channel wheel if it won't turn. Prior to replacing the part, ensure that dirt clogging the wheel is not the cause of malfunctioning. If the wheel and controller is clean and the wheel still fails to turn, a faulty channel wheel is likely the issue.

While replacing the channel wheel, take care with removing the motherboard to avoid damaging the motherboard. In addition, check the condition of the AA batteries to ensure that they are not swollen or leaking.



### TOOLS:

- [Y1 Tri-point Screwdriver](#) (1)
  - [Tweezers](#) (1)
-

## Step 1 — Batteries



- Pull down on the battery cover release lever and pull back to remove the cover.

## Step 2



- Remove both batteries from the device.

### Step 3 — Front Panel



- Remove the eight 9 mm screws from the back panel using the Tri-point Y1 screwdriver.
- ☑ During reassembly, firmly hold the panels of the controller together while replacing the screws so the panels do not separate.



## Step 4





- Carefully turn over the controller and place it on a flat surface.
- Slowly separate the top panel from the bottom panel.
- ⓘ The buttons are loose and may fall off the motherboard.
- Once separated, set aside the top panel.
- ✦ During reassembly, make sure the front panel lines up with the buttons so they slide back into place.

## Step 5 — Buttons

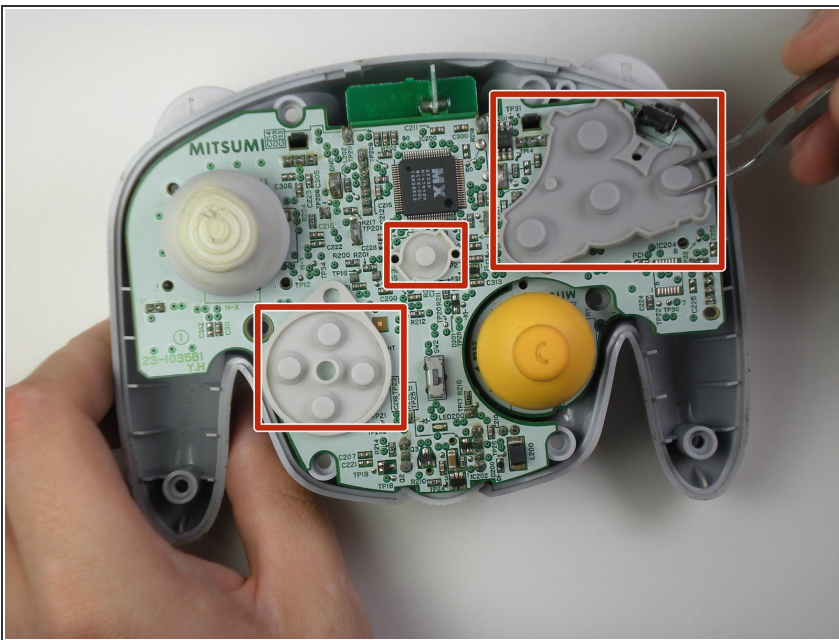


- Use tweezers to remove the buttons.

 It may be easier to remove the A button off of the pad by lifting it with your fingers.

 During reassembly, make sure all buttons are in their respective sockets so they match up with the front panel.

## Step 6 — Motherboard



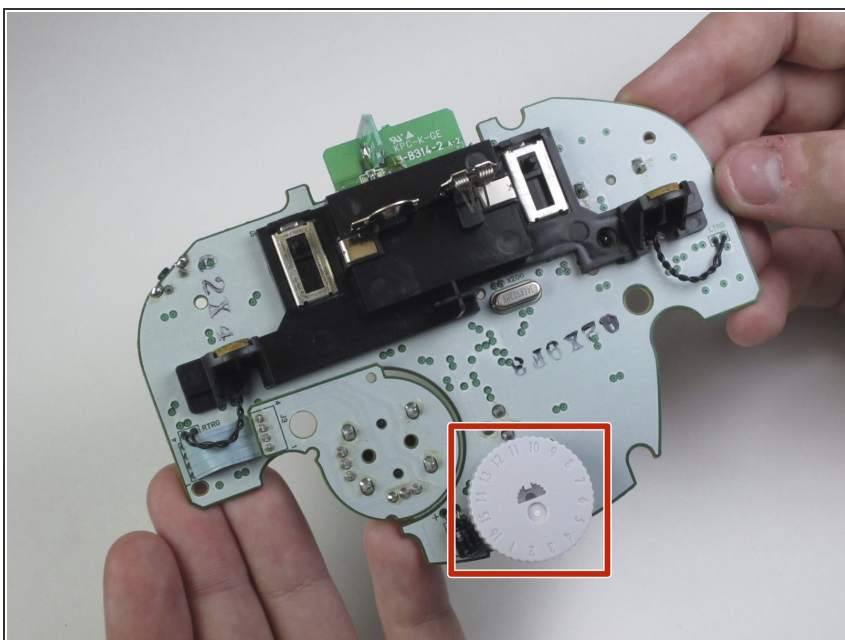
- Using tweezers remove the three grey button pads from the motherboard.

## Step 7



- With your fingers gently grip the motherboard on both sides and lift it away from the back panel.
- ❗ To put the motherboard back into place, align the two metal clips under the motherboard with the slots in the back panel. The motherboard should fall into place.

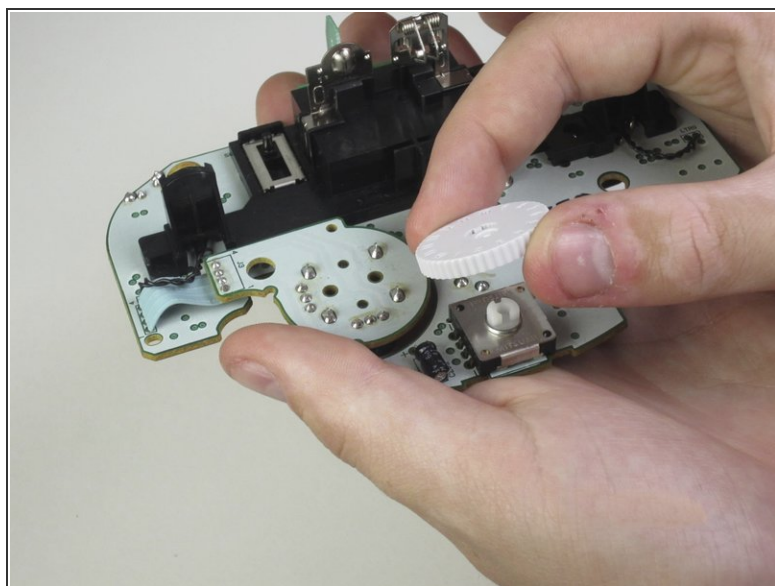
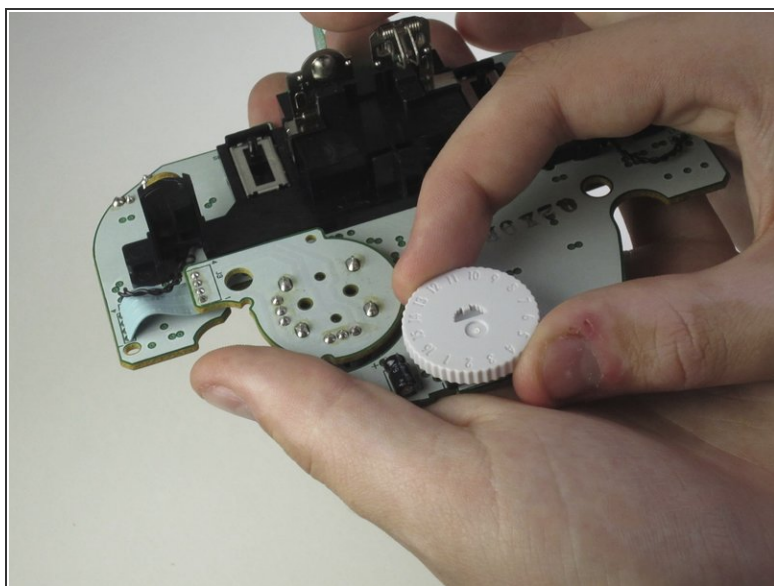
## Step 8 — Channel Wheel



- Turn the motherboard over so the channel wheel is facing up.



## Step 9



- Pinch the wheel and pull it away from the motherboard.

To reassemble your device, follow these instructions in reverse order.