



Samsung Galaxy A20e Screen Replacement

How to replace a cracked or broken screen on your Samsung Galaxy A20e.

Written By: Adriana Zwink



INTRODUCTION

Use this guide to replace a cracked or broken screen on your Samsung Galaxy A20e.

If the frame is deformed, it's important to replace it to make sure the new screen will mount correctly and won't suffer damage from uneven pressure.

Due to the phone's design, you must remove the lithium-ion battery to access the display cables. If the battery was deformed during removal replace it with a new one—reusing a deformed battery is a potential safety hazard.

Note: This guide instructs you to replace only the screen while leaving the original frame and motherboard in place. However, some replacement screens for this phone come pre-installed in a new frame (a.k.a. chassis), which requires a very different procedure. Make sure you have the correct part before starting this guide.

You'll need replacement adhesive to reattach components when reassembling the device.



TOOLS:

- [SIM Card Eject Tool](#) (1)
- [iFixit Opening Picks set of 6](#) (1)
- [Suction Handle](#) (1)
- [Phillips #00 Screwdriver](#) (1)
- [iOpener](#) (1)



PARTS:

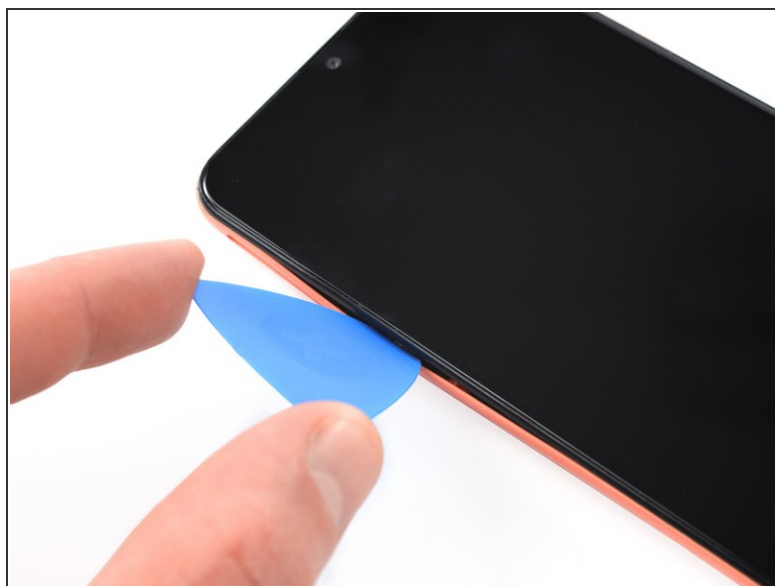
- [Precut Adhesive Card](#) (1)

Step 1 — Remove the SIM tray



- Before starting repairs, take your Galaxy A20e off the charger and power it down.
 - Insert a SIM card eject tool, a SIM eject bit or a straightened paper clip into the hole on the SIM tray located on the left side of the phone.
 - Press your SIM card eject tool firmly into the hole in order to eject the SIM card tray.
 - Remove the SIM card tray.
- i** When reinserting the cards, make sure to properly orient them in the tray.

Step 2 — Unclip the plastic clips



 The back cover is held in place by plastic clips.

- Insert an opening pick between the screen and the back cover on the left edge next to the hole for the SIM-eject tool.

Step 3



- Slide the opening pick around the bottom left corner to unclip the plastic clips.

Step 4



- Slide the opening pick along the bottom edge to unclip the plastic clips.

Step 5



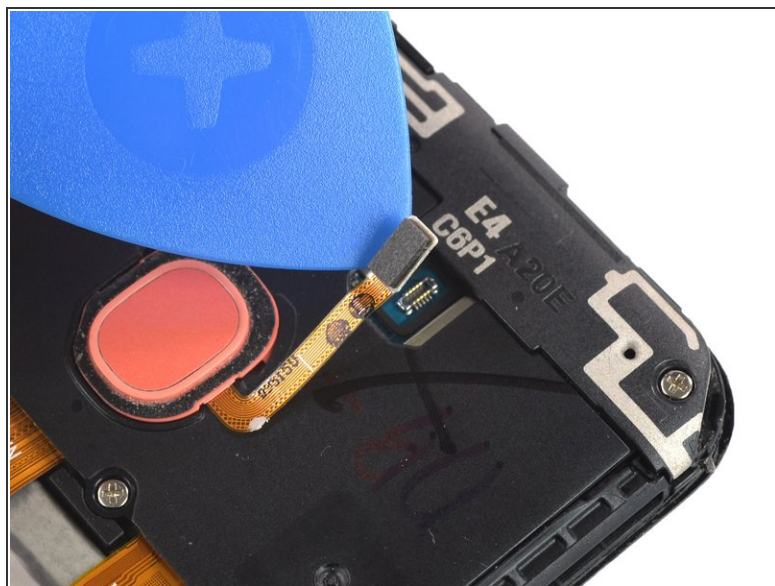
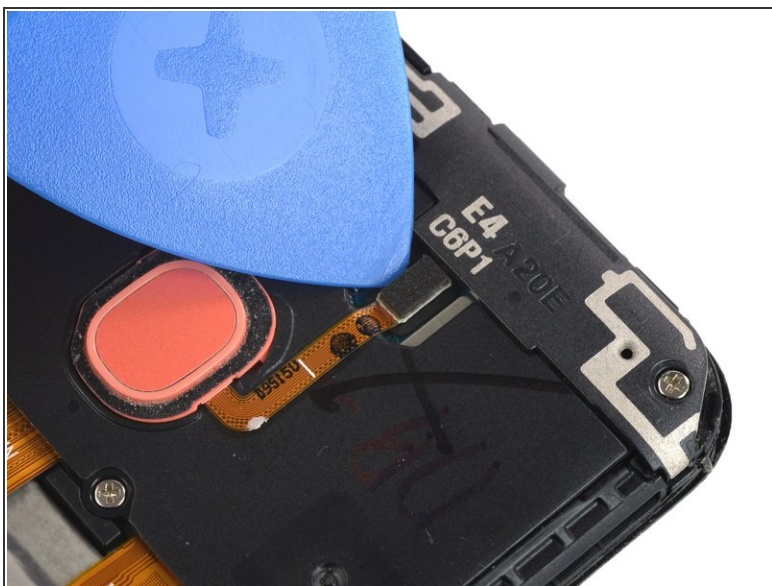
- Slide the opening pick along the right edge to the top right corner to unclip the plastic clips.

Step 6 — Remove the back cover



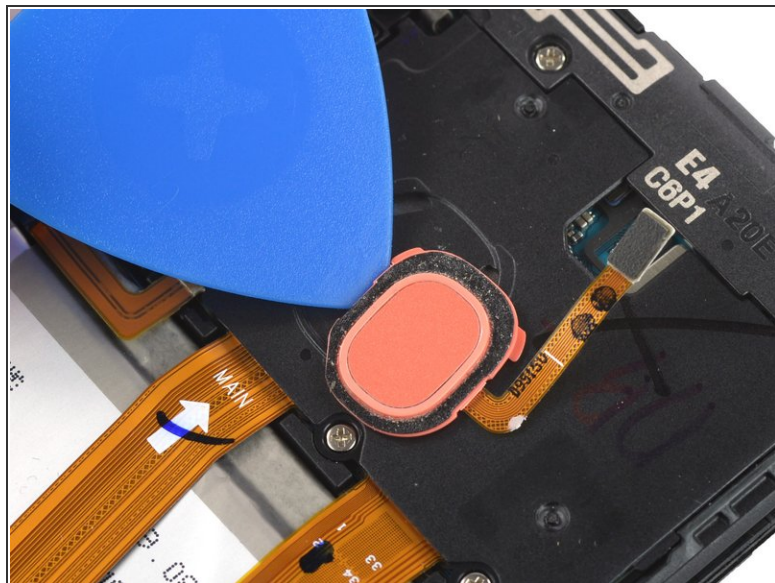
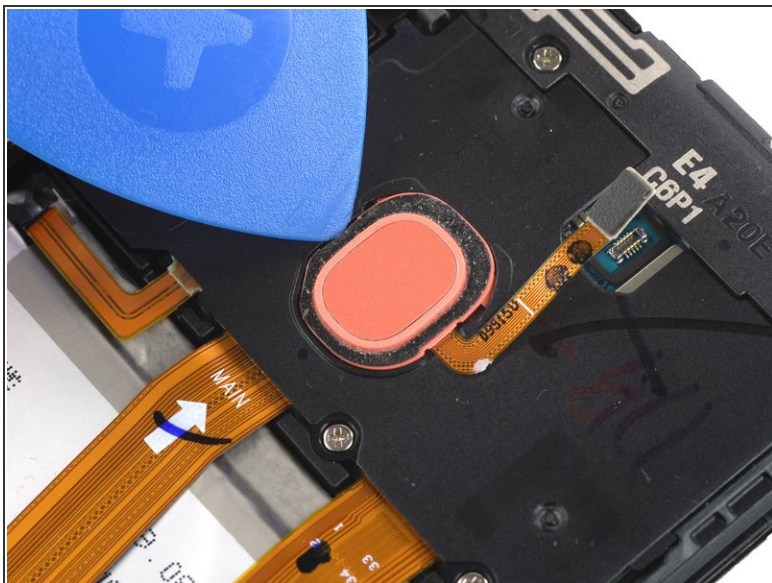
- Separate the phone assembly from the back cover.

Step 7 — Disconnect the fingerprint sensor



- Use an opening pick to pry up and disconnect the fingerprint sensor.

Step 8 — Loosen the fingerprint sensor



- Push against the left edge of the fingerprint sensor with an opening pick to slide the sensor to the right and separate it from the motherboard cover.

Step 9 — Remove the fingerprint sensor



- Remove the fingerprint sensor.

Step 10 — Unscrew the motherboard covers



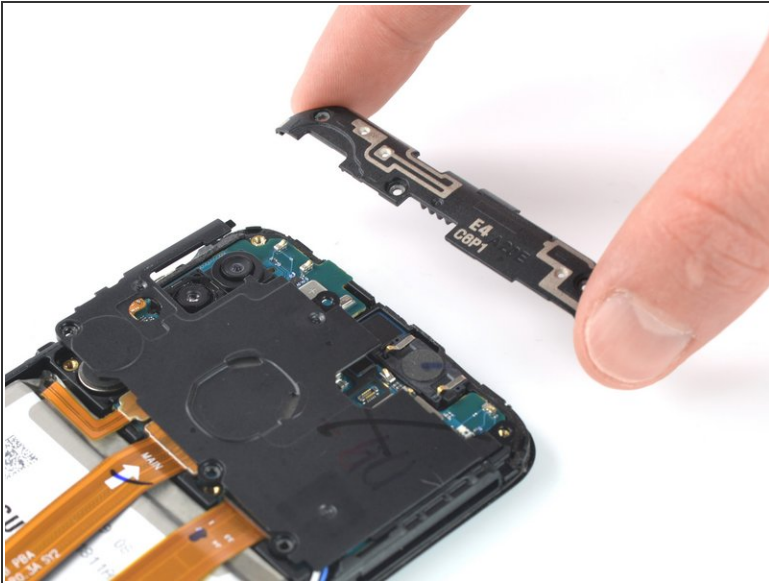
- Use a Phillips screwdriver to remove the six 3.5 mm-long screws securing the motherboard covers.

Step 11 — Unclip the upper motherboard cover



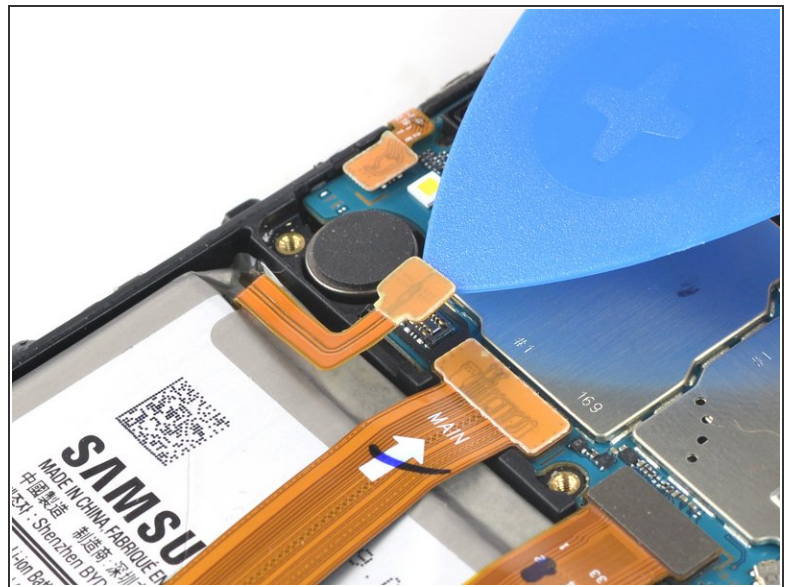
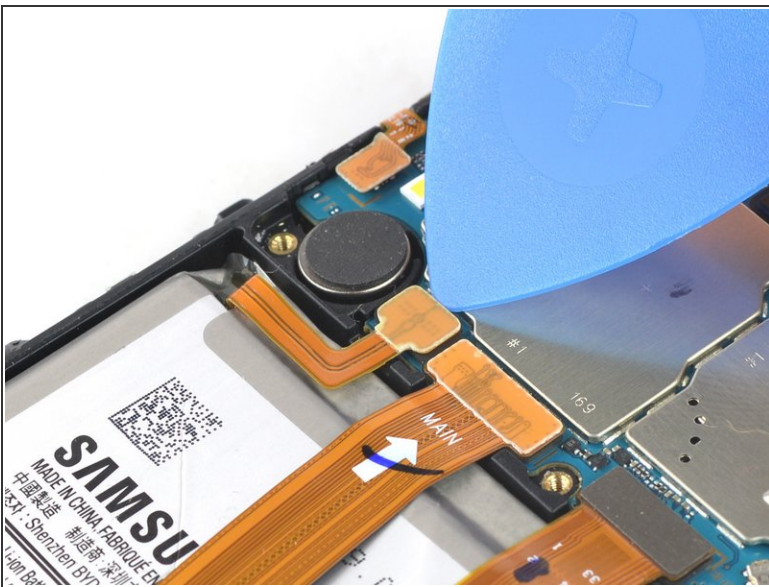
- Slide an opening pick under the upper motherboard cover.
- Use the opening pick to unclip the plastic clips, which are holding the upper motherboard cover in its place.

Step 12 — Remove the motherboard covers



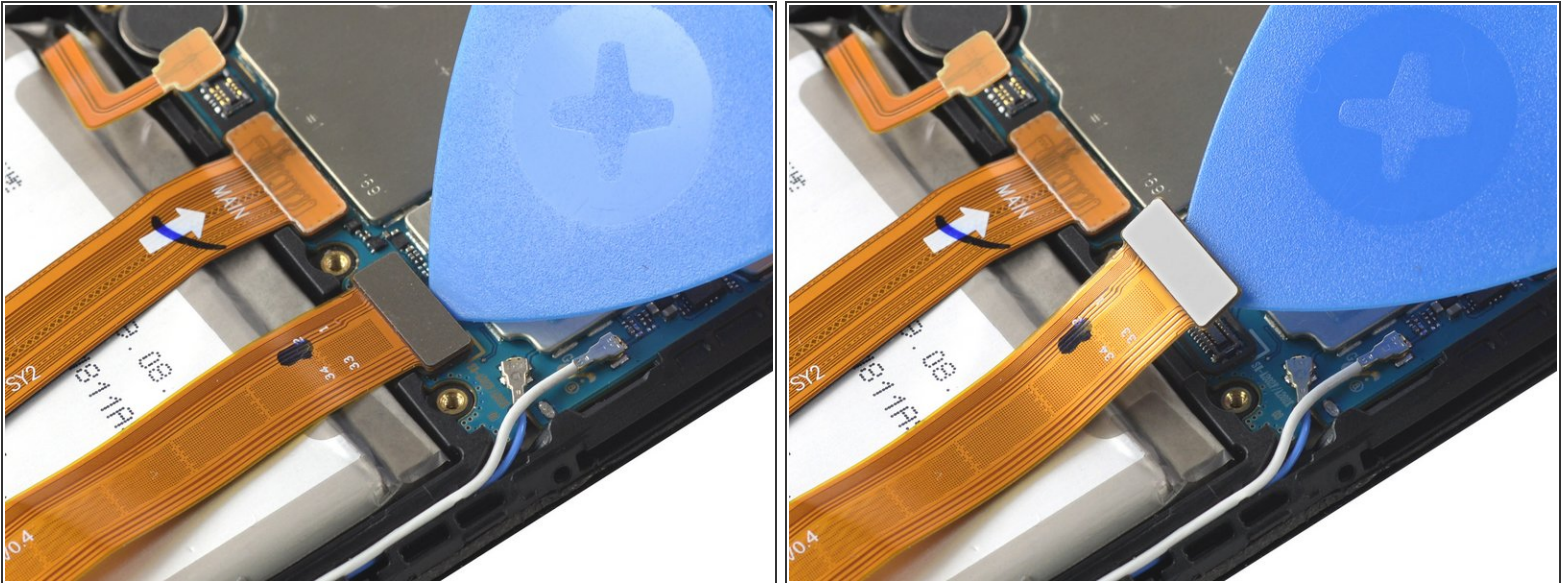
- Remove the upper motherboard cover.
- Remove the lower motherboard cover.

Step 13 — Disconnect the battery



- Use an opening pick to disconnect the battery by prying the connector straight up from its socket.

Step 14 — Disconnect the flex cables



- Use the opening pick to disconnect the interconnect and display flex cables by prying the connectors straight up from their sockets.

Step 15 — Unscrew the daughterboard cover



- Use a Phillips screwdriver to remove the seven 3.5 mm-long screws securing the daughterboard cover.

Step 16 — Remove the daughterboard cover



- Remove the daughterboard cover.

Step 17 — Heat the display



- Apply a [heated iOpener](#) to the screen to loosen the adhesive underneath. Apply the iOpener for at least two minutes.
- ⓘ You may need to reheat and reapply the iOpener several times to get the phone warm enough to cut the adhesive. Follow the iOpener instructions to avoid overheating.

Step 18 — Insert an opening pick



- Once the screen is warm to the touch, apply a suction handle to the left edge of the phone.
 - ❗ If the phone's screen is cracked, the suction handle may not stick. Try lifting it with strong tape, or superglue the suction handle in place and allow it to cure so you can proceed.
- Lift the screen with the suction handle to create a small gap between the screen and the frame.
- Insert the tip of an opening pick into the gap between the screen and the midframe.

Step 19 — Slice the adhesive



- Slide the opening pick along the left edge to the top left corner to cut the adhesive.
- Leave the pick in its place to prevent the adhesive from resealing.

Step 20



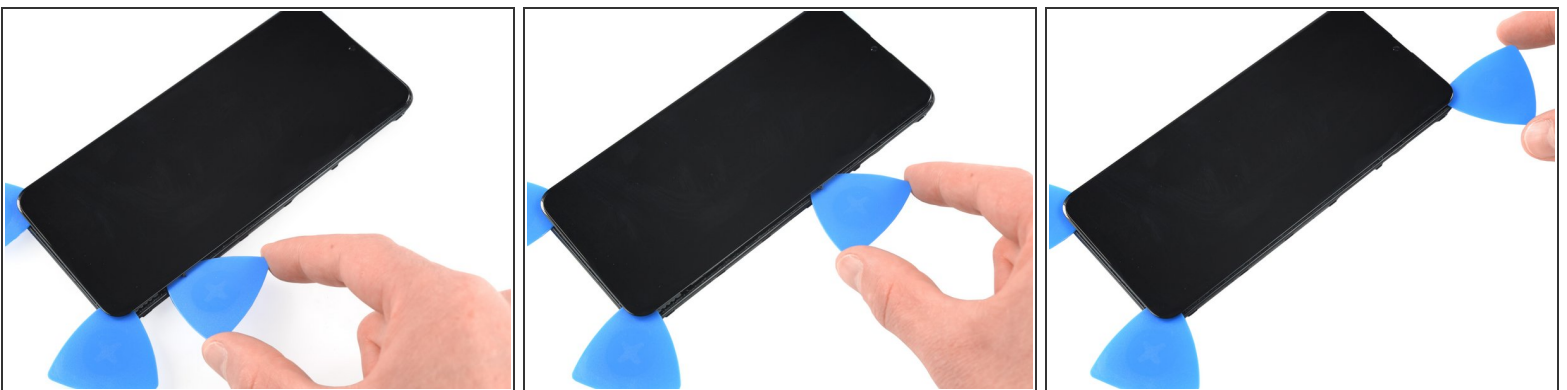
- Insert a second opening pick under the top left corner.
- Slide it along the left edge to the bottom left corner to cut the adhesive.
- Leave the picks in their place to prevent the adhesive from resealing.

Step 21



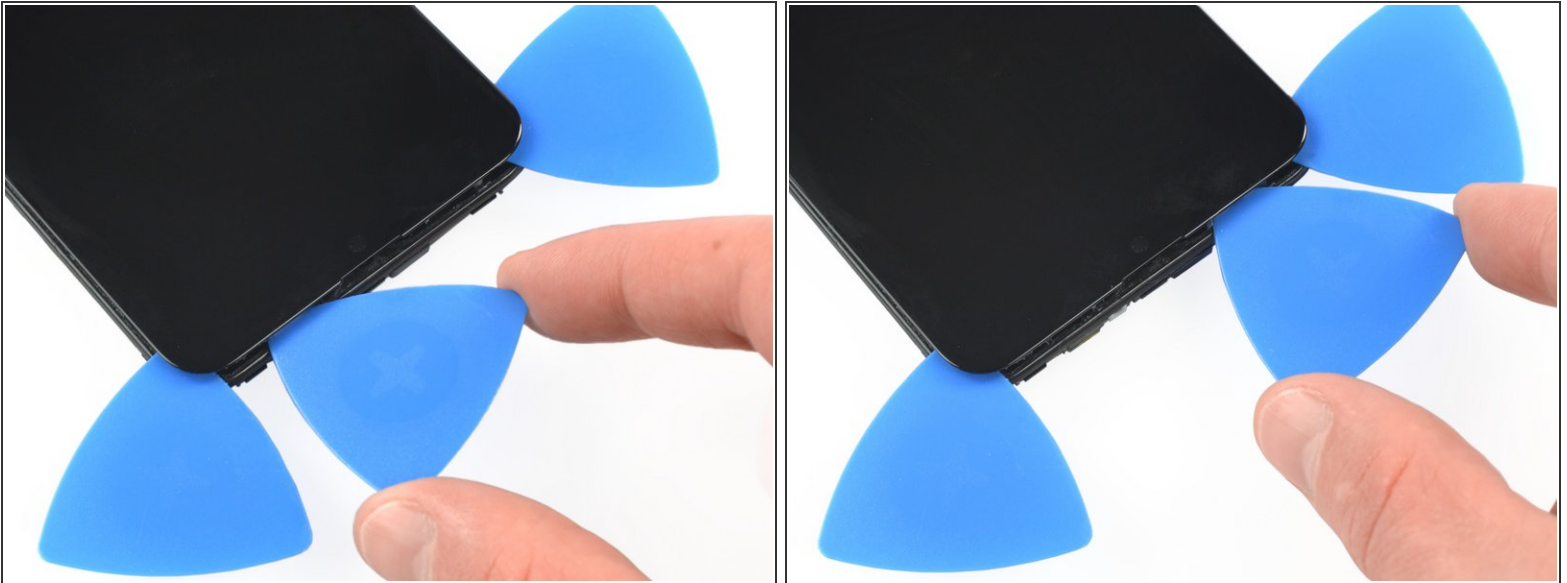
- Insert a third opening pick under the bottom left corner of the phone.
- Slide it along the bottom edge to the bottom right corner.
- Leave the pick there to prevent the adhesive from resealing.

Step 22



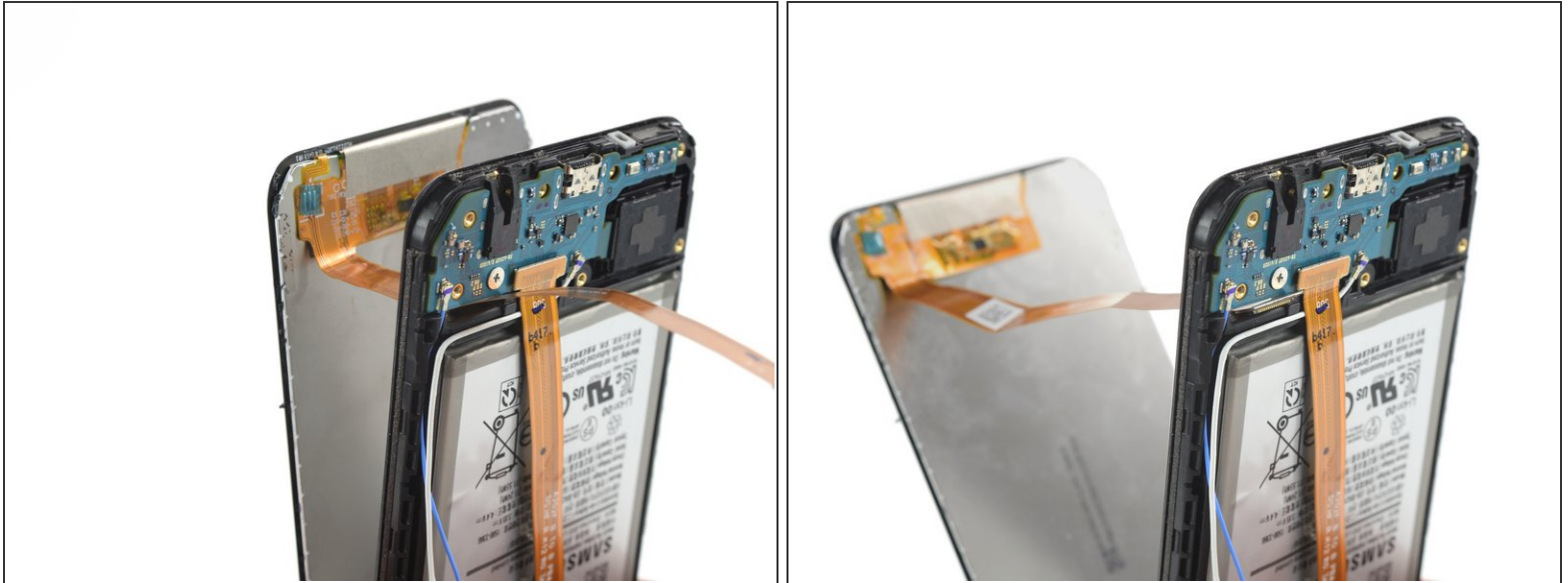
- Insert a fourth opening pick at the bottom right corner.
- Slide the pick along the right edge to the top right corner and leave it in its place to prevent the adhesive from resealing.

Step 23



- Insert a fifth opening pick under the top right corner.
 - Slide it along the top edge of the phone to cut the remaining adhesive.
 - ⓘ When you slice near the front facing camera, insert only the tip (3 mm) of the opening pick to avoid damaging or smearing the camera.
- ⚠ Do not remove the screen completely yet. The display cable is still threaded through the midframe.

Step 24 — Separate the screen



- Thread the display flex cable through the gap in the frame.

Step 25 — Remove the screen



- Remove the screen.
- ✦ Compare your new replacement part to the original part—you may need to transfer remaining components or remove adhesive backings from the new part before installing.
- ✦ During reassembly, [follow this guide](#) if you are using a pre-cut adhesive card.

If possible, turn on your device and test your repair before installing new adhesive and resealing.

Compare your new replacement part to the original part—you may need to transfer remaining components or remove adhesive backings from the new part before installing.

To reassemble your device, follow these instructions in reverse order. Apply new adhesive where necessary after cleaning the relevant areas with isopropyl alcohol (>90%).

The best way to secure the new screen is to apply a sheet of custom-cut double-sided tape to the back of the screen.

Take your e-waste to an [R2 or e-Stewards certified recycler](#).

Repair didn't go as planned? Try some [basic troubleshooting](#), or ask our [Answers community](#) for help.