



1997-2003 Pontiac Grand Prix GT Air Filter Replacement

A clogged air filter will suffocate your engine. Changing clogged air filter will result in noticeably better performance!

Written By: Scratchitory



This document was generated on 2020-11-27 02:21:40 AM (MST).

INTRODUCTION

Air filters are used to clean and purify the air that goes into your engine. Overtime, they can become filthy and/or clogged. Changing out a nasty filter for a fresh clean one, can result in better performance. Mainly in acceleration. [Here](#) is a very good video to reference!



TOOLS:

- [Flathead Screwdriver](#) (1)

Used to remove one end of the intake tube.

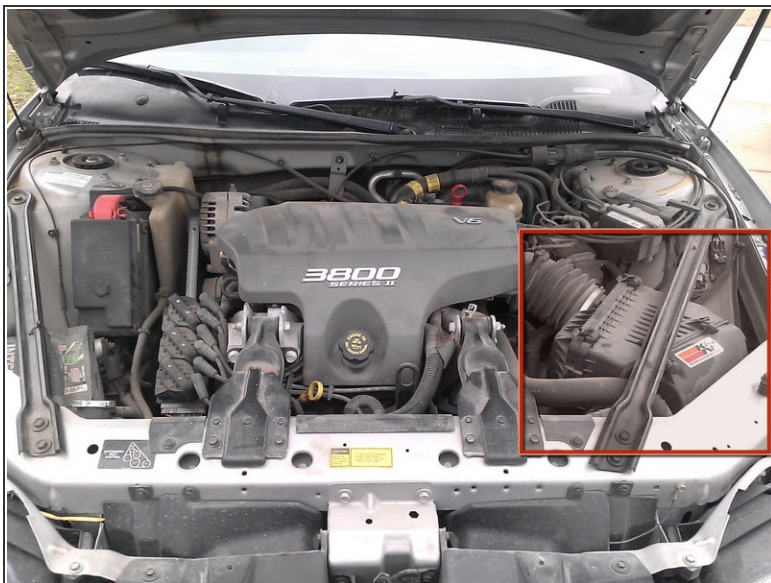


PARTS:

- [Purolator PureONE air filter](#) (1)

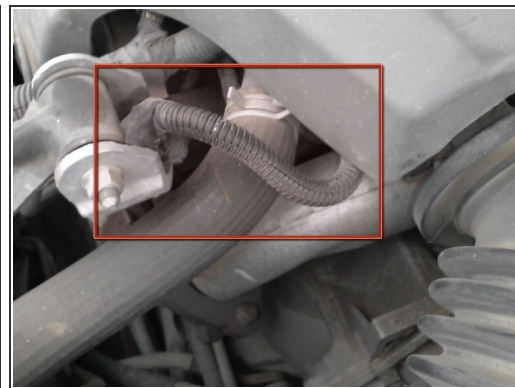
Does not need to be this exact filter. I used this one and it was a perfect fit. If you choose to use a different filter, be sure it is compatible with your Grand Prix.

Step 1 — Where is the Air Filter At?



- The air filter is located on the right side of the engine. Inside of the medium sized box (Outlined in photo with red box).
- *This is where we will be working primarily*

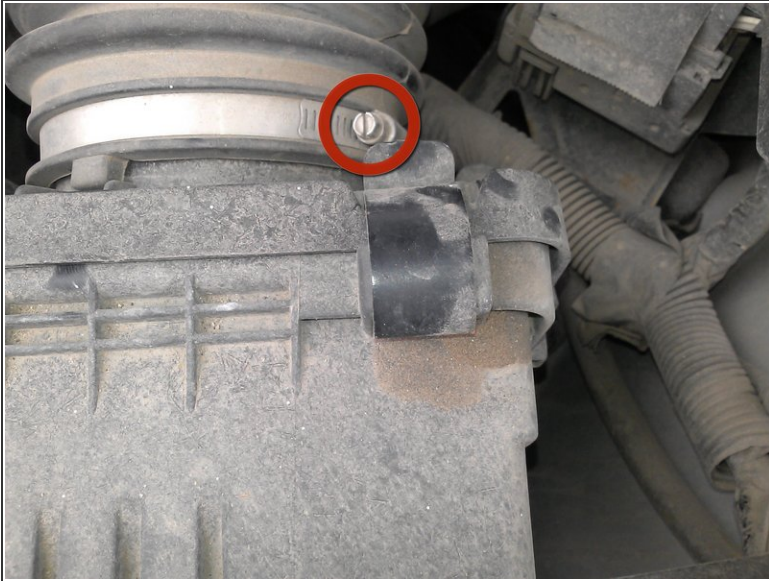
Step 2 — Removing the Sensor



- Before doing anything, we must remove the sensor attached to the intake tube. *The sensor is circled in the photo.*
- Pull up on the grey tab and pull the sensor up *gently* to release the sensor.

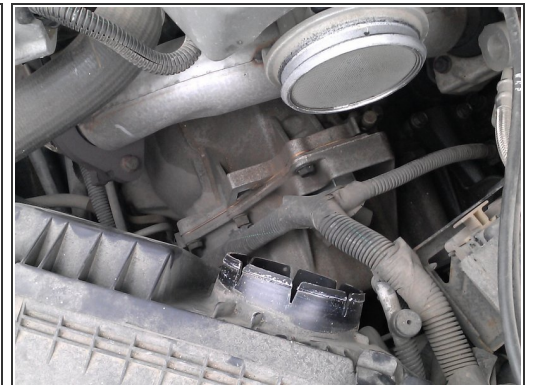
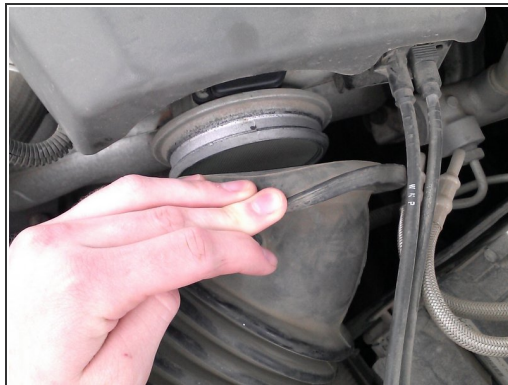
⚠ Put the sensor in a location that it will not get in the way.

Step 3 — Removing the Intake Tube Brace



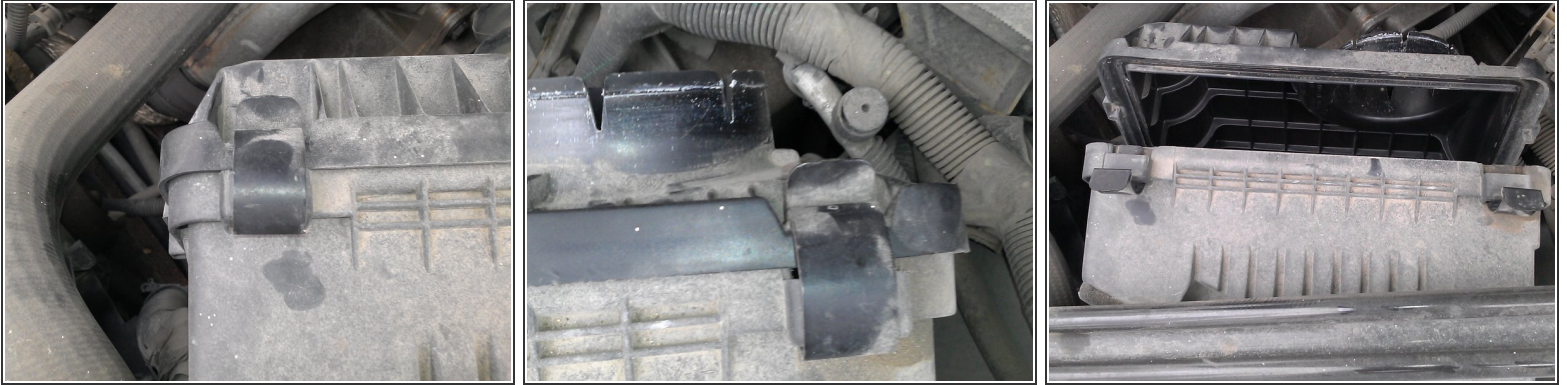
- Using the flat-head screwdriver, unscrew the brace until it is very loose. **but not completely off!**

Step 4 — Removing the Engine-End of the Intake Tube.



- Simply tug on the rim of the tube and pull downward.
- ⓘ *It's not meant to come off easily, so it will take some working to get it off.*
- **There**, your intake tube is now off. Set this somewhere you will not lose it.

Step 5 — Removing the Air Filter Box Cover



- Undue the two tabs on the left and right sides of the filter box and lift the cover out.


 *Put the cover somewhere you will not lose.*

Step 6 — Removing the Old Filter

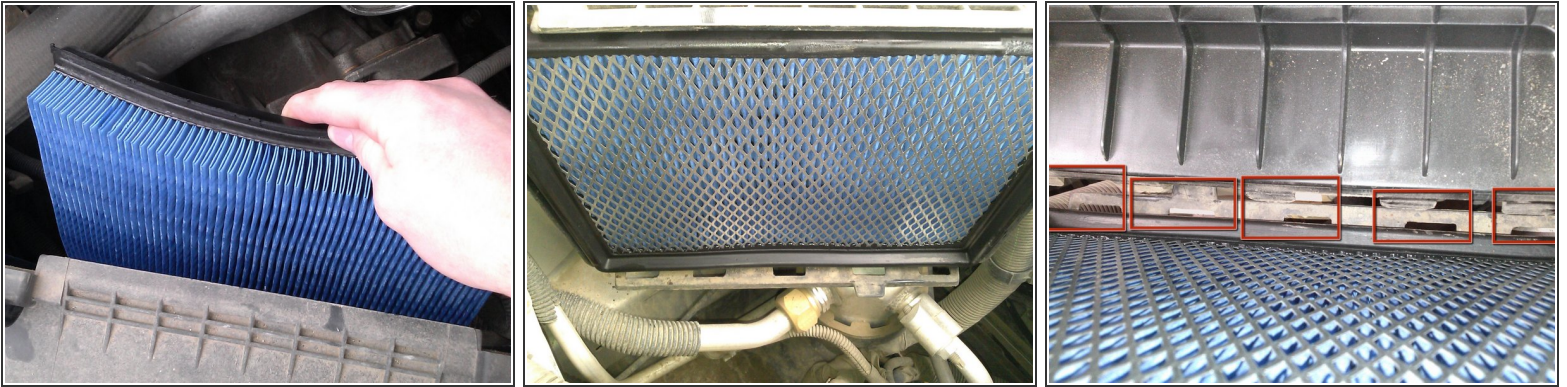


- Use the indent under the tab to pull the filter out.

 **The second photo shows why changing the air filter is important. A dirty filter makes it harder for the engine to breathe.**

 *Put the old filter in the trash, you have no need for it anymore.*

Step 7 — Installing the New Filter



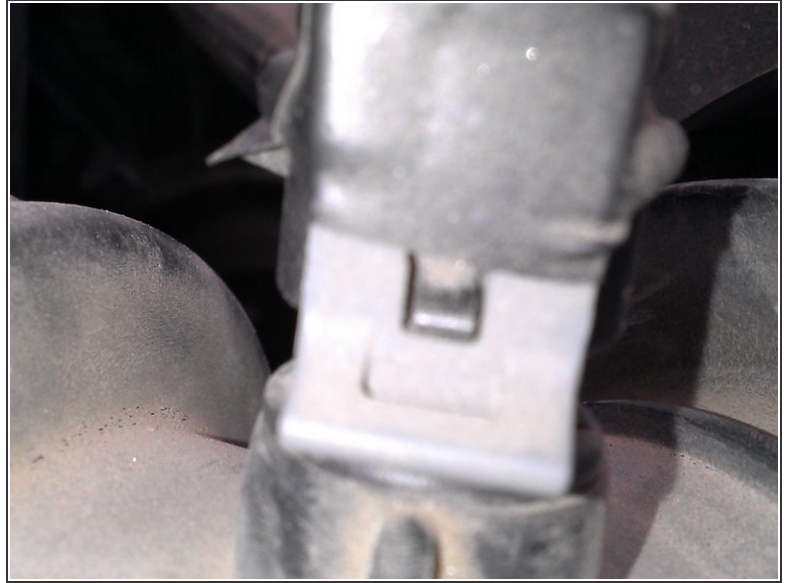
- The filter must go in the same direction as shown in the first photo.
- *The second photo shows the view of it from the inside of the engine bay.*
- *When putting the filter box cover back on, be sure to line up the tabs and holes at the bottom of the box. Then securely snap the tabs back onto the filter box.*

Step 8 — Reattaching the Intake Tube



- Push the engine side of the intake tube on first. Be sure to **firmly** press it back into place. You **do not** want the intake tube coming off while driving down the road.
- For the filter-box half of the intake tube, first be sure to place the little tab on the tube inside of the notch as shown in the second photo.
- Now tighten up that screw. Get it very tight. As with the other end of the intake tube, you **do not** want it coming off while driving.

Step 9 — Reattach the Sensor



⚠ This is also critical, forgetting this could be fatal for your car!

- Line up the plastic tab and push it into place. You should hear a small click.

i *lightly* tug on it to be sure it is in place.

Step 10 — Final Steps



- Give both ends of the intake tube a tug to be sure they're tightly in place.
- Now, close the hood and take it for a test drive.

★ *If your filter hasn't been changed in a long while, you will notice a **huge** difference in acceleration performance!*

⚠ **When returning from your test drive, open the hood and check the intake tube again. Making sure it did not loosen up during the drive. If it did, be sure to fix this immediately**

- ***Congratulations! Your air filter has been successfully installed. Now go enjoy your Grand Prix's improved performance!***

Your air filter has now been replaced. Your acceleration should be improved! Enjoy!