



# Samsung Galaxy A20e Fingerprint Sensor Replacement

How to replace a broken fingerprint sensor on your Samsung Galaxy A20e.

Written By: Adriana Zwink



# INTRODUCTION

Use this guide to replace a broken fingerprint sensor on your Samsung Galaxy A20e.



## TOOLS:

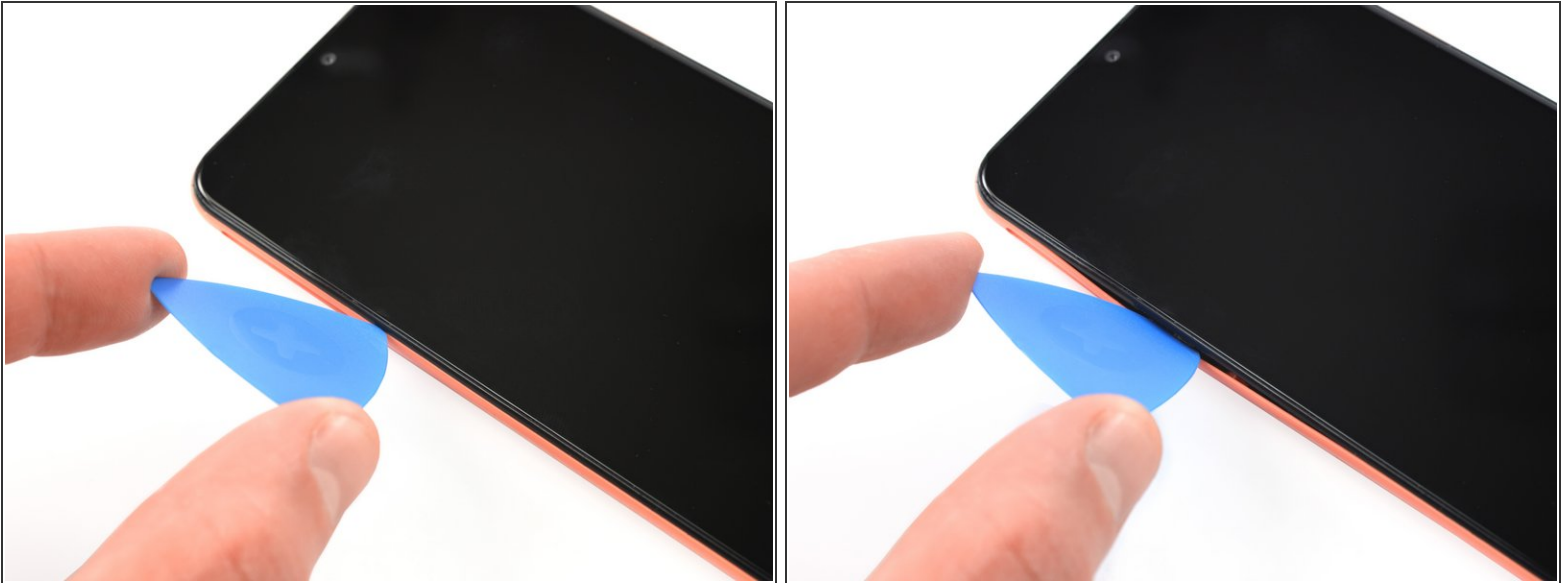
- [SIM Card Eject Tool](#) (1)
  - [iFixit Opening Picks \(Set of 6\)](#) (1)
-

## Step 1 — Remove the SIM tray



- Before starting repairs, take your Galaxy A20e off the charger and power it down.
  - Insert a SIM card eject tool, a SIM eject bit or a straightened paper clip into the hole on the SIM tray located on the left side of the phone.
  - Press your SIM card eject tool firmly into the hole in order to eject the SIM card tray.
  - Remove the SIM card tray.
- i** When reinserting the cards, make sure to properly orient them in the tray.

## Step 2 — Unclip the plastic clips



**i** The back cover is held in place by plastic clips.

- Insert an opening pick between the screen and the back cover on the left edge next to the hole for the SIM-eject tool.

## Step 3



- Slide the opening pick around the bottom left corner to unclip the plastic clips.

## Step 4



- Slide the opening pick along the bottom edge to unclip the plastic clips.

## Step 5



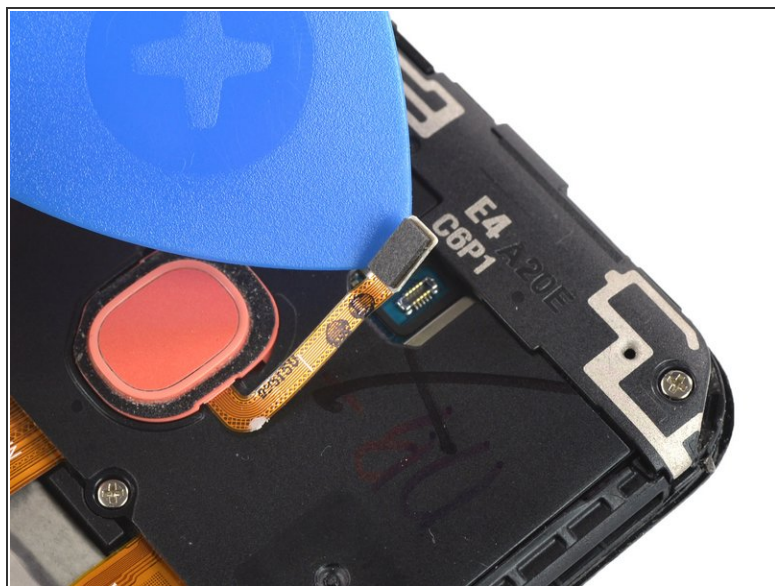
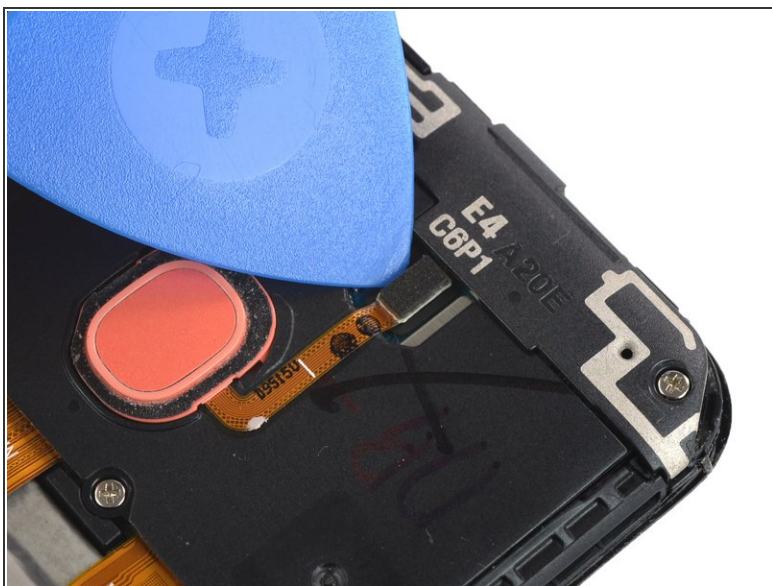
- Slide the opening pick along the right edge to the top right corner to unclip the plastic clips.

## Step 6 — Remove the back cover



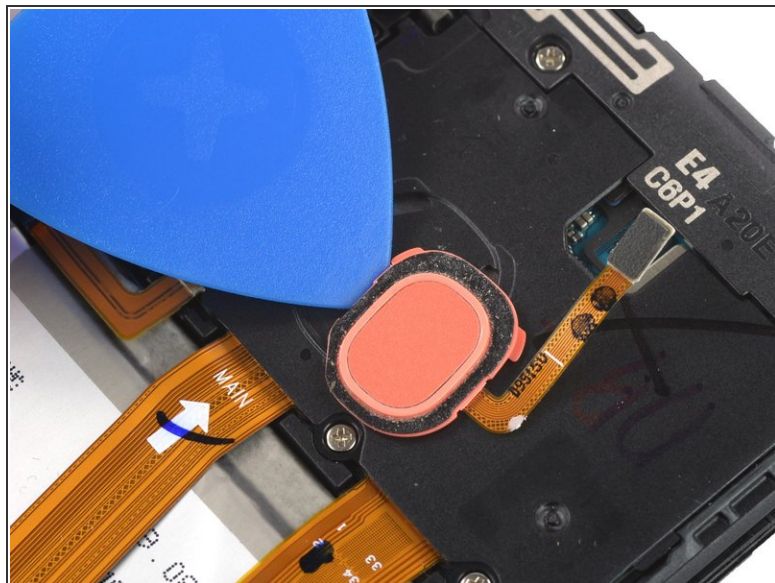
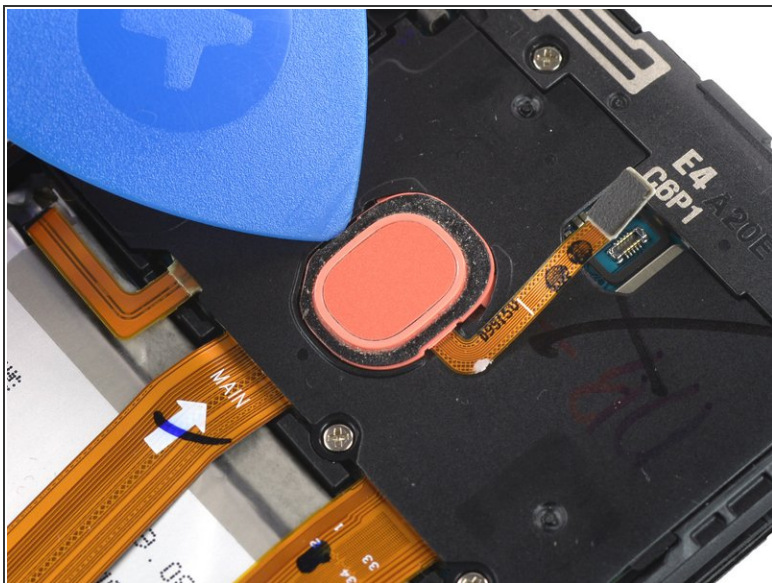
- Separate the phone assembly from the back cover.

## Step 7 — Disconnect the fingerprint sensor



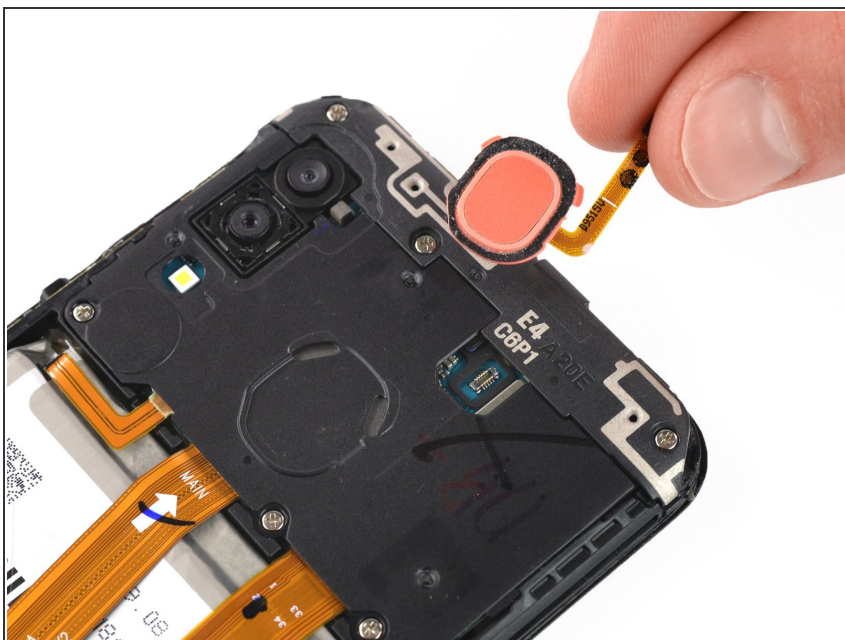
- Use an opening pick to pry up and disconnect the fingerprint sensor.

## Step 8 — Loosen the fingerprint sensor



- Push against the left edge of the fingerprint sensor with an opening pick to slide the sensor to the right and separate it from the motherboard cover.

## Step 9 — Remove the fingerprint sensor



- Remove the fingerprint sensor.

To reassemble your device, follow these instructions in reverse order.

Take your e-waste to an [R2 or e-Stewards certified recycler](#).

Repair didn't go as planned? Try some [basic troubleshooting](#), or ask our [Answers community](#) for help.