



Sennheiser HD 4.50 Battery Replacement

This repair guide will demonstrate how to replace a faulty battery for the Sennheiser HD 4.50.

Written By: Grace Singley



INTRODUCTION

This guide will demonstrate how to replace a faulty battery for the Sennheiser HD 4.50 BTNC. If the device does not respond when buttons are pressed, the battery might be the [issue](#). Before beginning this repair, the headphones should be disconnected from any external power source, such as a charger.



TOOLS:

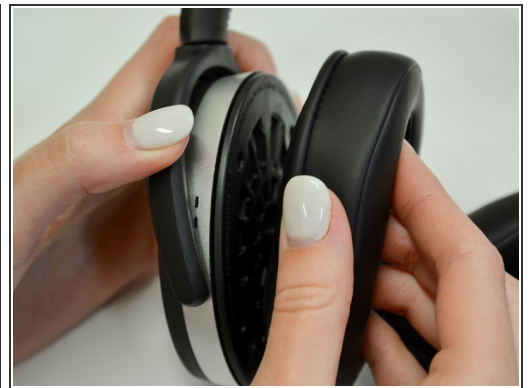
- [Phillips #00 Screwdriver](#) (1)
 - [iFixit Opening Tool](#) (1)
 - [Spudger](#) (1)
 - [Tweezers](#) (1)
-


Step 1 — Battery



- Locate the side designation on the headband-earpiece junction.
- The battery is on the left side.
- The motherboard is on the right side.

Step 2



- Remove the ear pad from the left ear cup.
-  Refer to the [Ear Pad Removal guide](#) for more guidance.

Step 3



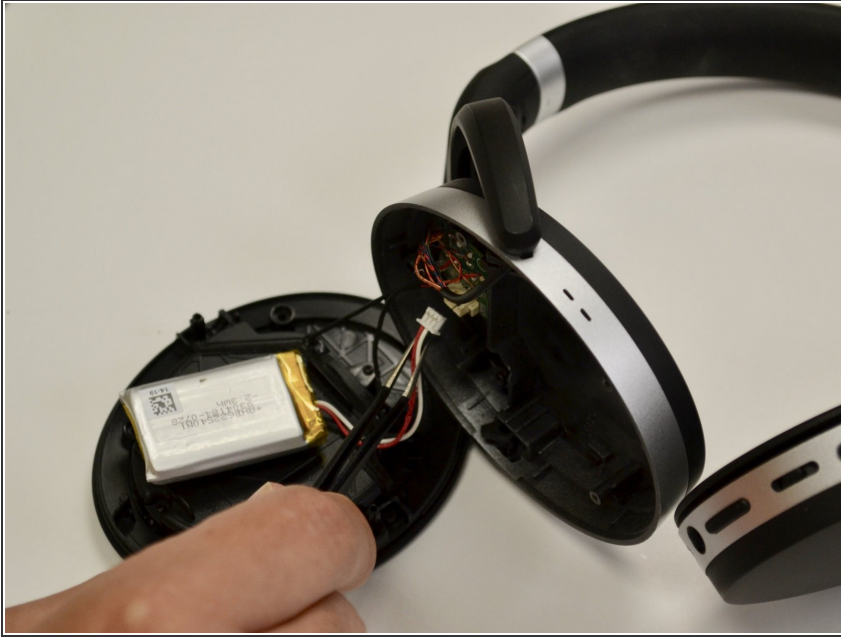
- Use a Phillips #00 screwdriver to remove the four 10 mm screws holding the ear cup cover in place.
- Use an opening tool to pry open the cover.
- Remove the cover.

Step 4



- Use a spudger to pry the battery from the plastic case.
- ⓘ The battery is held down by a strong adhesive, so it will give resistance.

Step 5



- Using tweezers, pull the white battery connector upwards out of its socket.
- Remove the battery.

To reassemble your device, follow these instructions in reverse order.