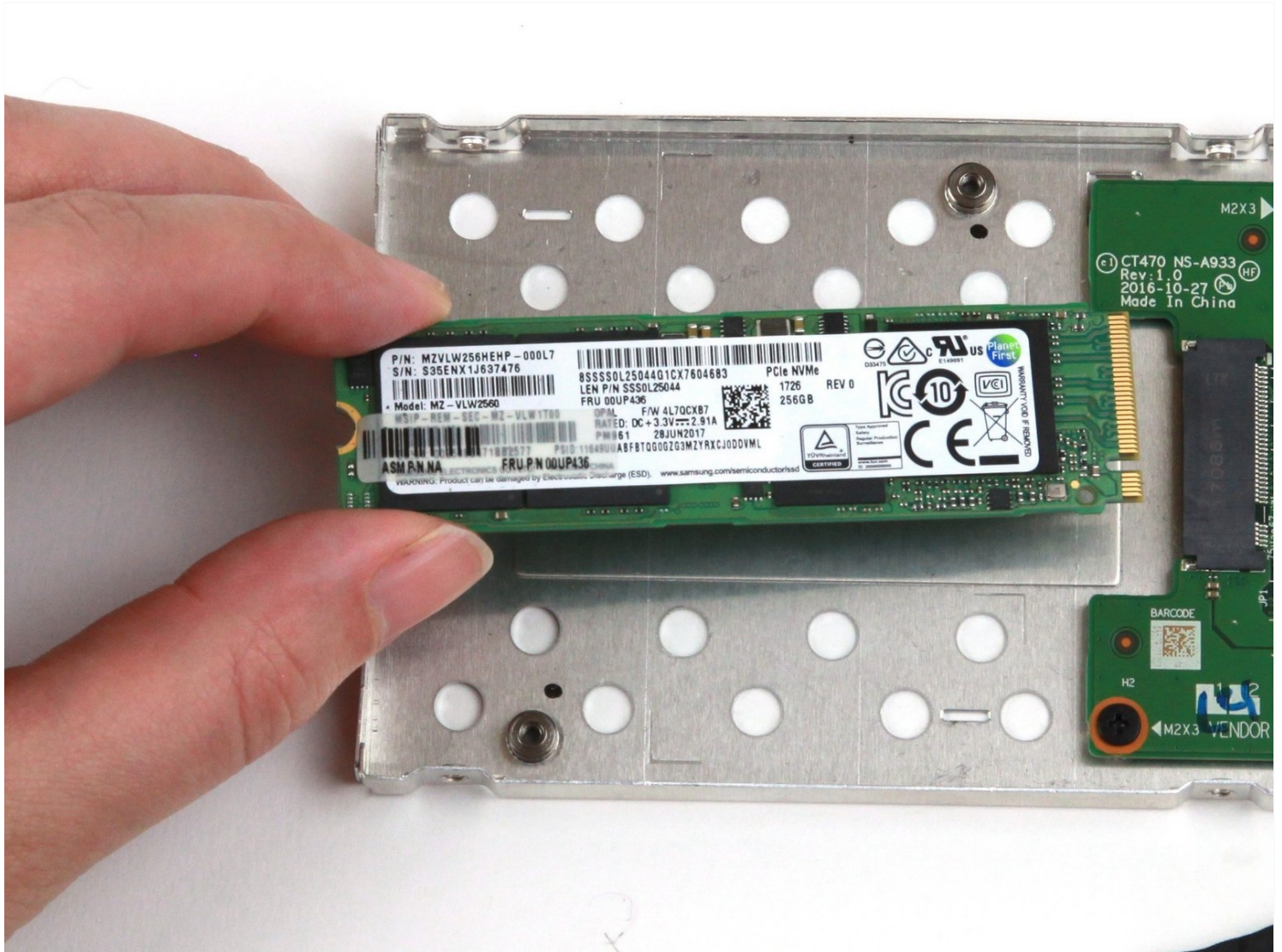




Lenovo ThinkPad T470 SSD Replacement

Use this guide to replace the SSD in your...

Written By: Kristen Gismondi



INTRODUCTION

Use this guide to replace the SSD in your Lenovo ThinkPad T470 laptop.

An SSD (short for “solid-state drive”) is a storage component in a computer. SSDs use flash memory, as opposed to the spinning disks and moveable parts used in an HDD (hard disk drive). As a result, SSDs are much quieter and operate more quickly than HDDs. Signs your SSD may be faulty include corrupted data, read-only errors, frequent crashes, or [blue screen of death](#).

If you are able to recover any data saved to your SSD, be sure to [back up your files](#) before beginning this guide. Also, make sure to [disable the internal battery](#), power down your device, and disconnect from any external power sources before you begin.



TOOLS:

Phillips #1 Screwdriver (1)
Spudger (1)



PARTS:

Crucial P3 NVMe PCIe M.2 2280SS SSD (1)
Crucial P3 Plus NVMe PCIe M.2 2280SS SSD (1)
Crucial P5 Plus PCIe M.2 2280SS SSD (1)

Step 1 — External Battery



⚠ Before you begin this guide, make sure to [disable the internal battery](#), power down your device, and disconnect from any external power sources.

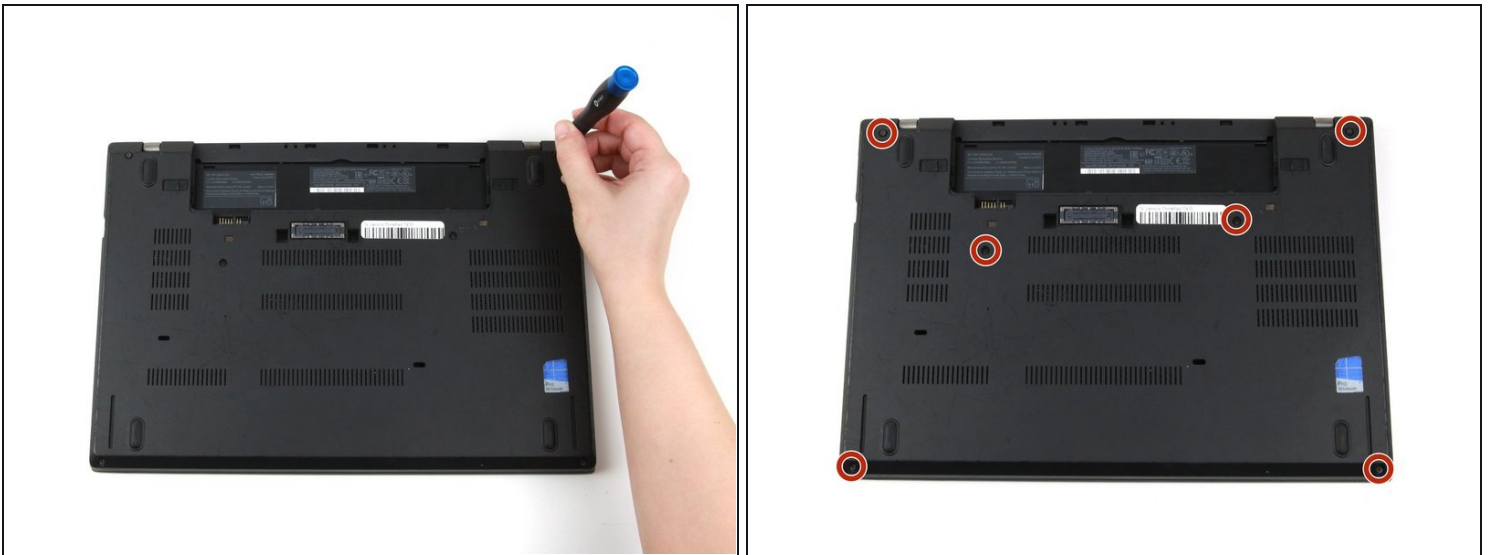
- Place the laptop so that the bottom is facing upwards.
- Slide the latch on the left side of the battery to the left until it clicks in place.

Step 2



- Slide the latch on the right side of the battery to the right and hold it in place with your thumb.
- Use your other hand to slide the battery towards the back of the laptop.
- Lift the battery up and away from the laptop.

Step 3 — Bottom Cover



- Use a Phillips #1 screwdriver to loosen the six captive screws on the bottom cover of the laptop.

Step 4



- Use your hands to pull up on the back cover and release the plastic clips starting on the bottom side of the battery compartment.

⚠ Potential for device damage: Be sure to detach the plastic clips in this area first. You risk cracking the bottom cover if you attempt to detach it from around the edges of the laptop first.

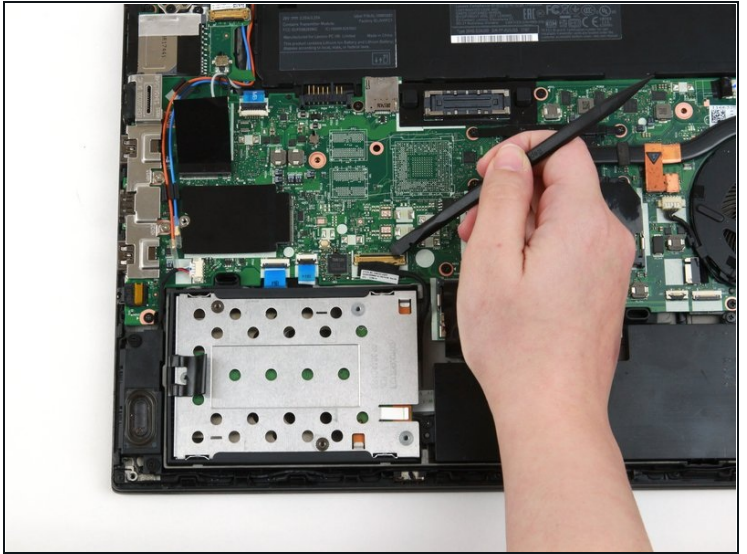
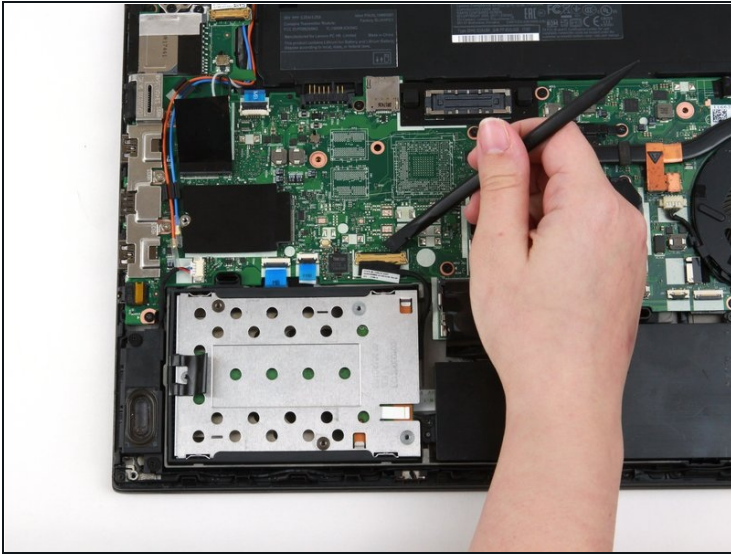
- Use your hands to pull up on the right side of the bottom cover to release the plastic clips.
- Use your hands to pull up on the left side of the bottom cover to release the plastic clips.

Step 5



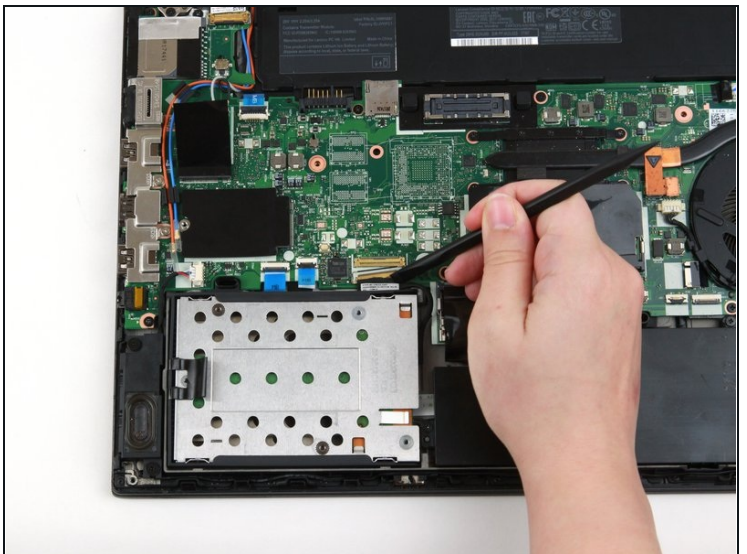
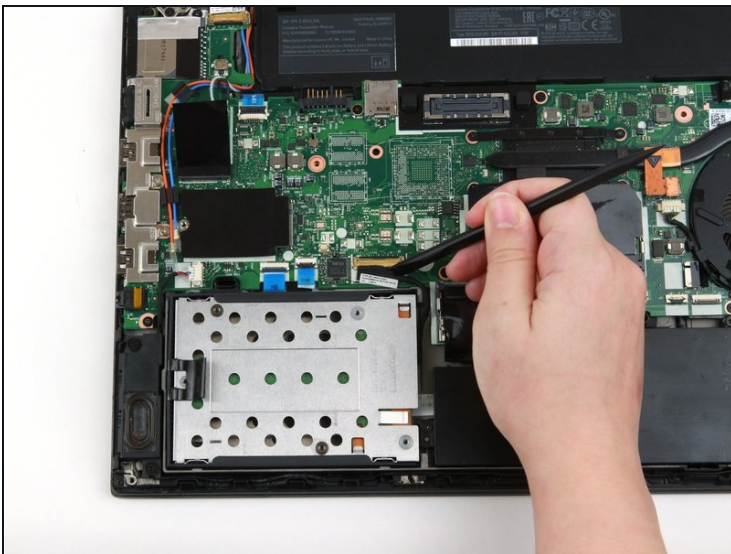
- Remove the bottom cover from the laptop.
- ✦ Disconnect the battery from the board before continuing.

Step 6 — SSD Assembly



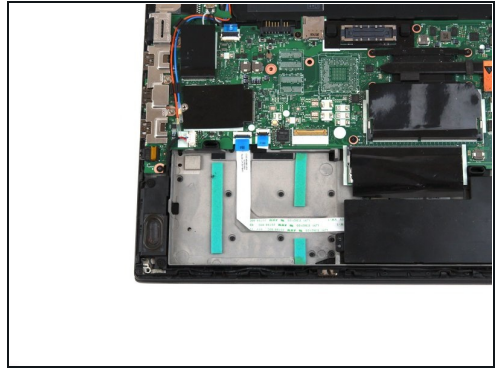
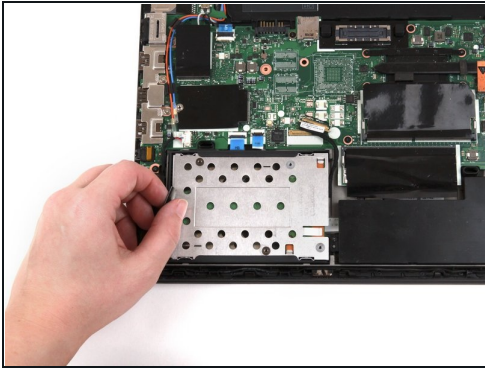
- Use the flat end of a spudger to flip up the metal clip securing the SSD connector to the motherboard.

Step 7



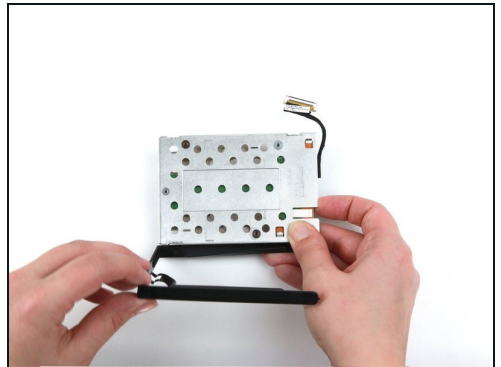
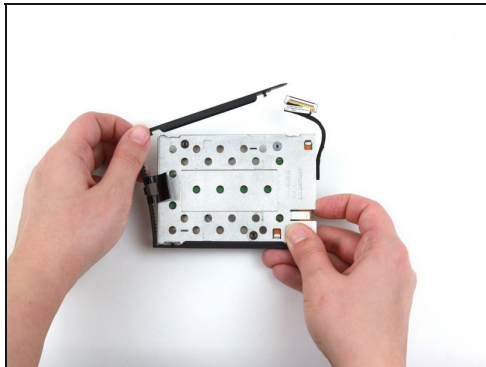
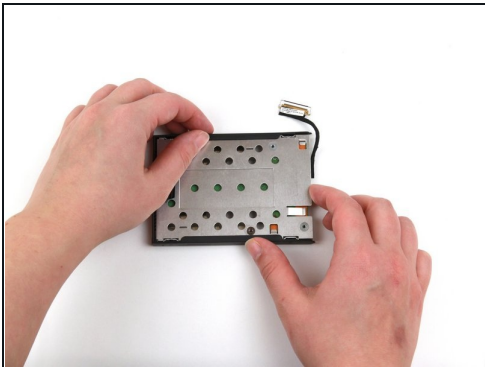
- Use the flat end of a spudger to separate the connector from its socket.

Step 8



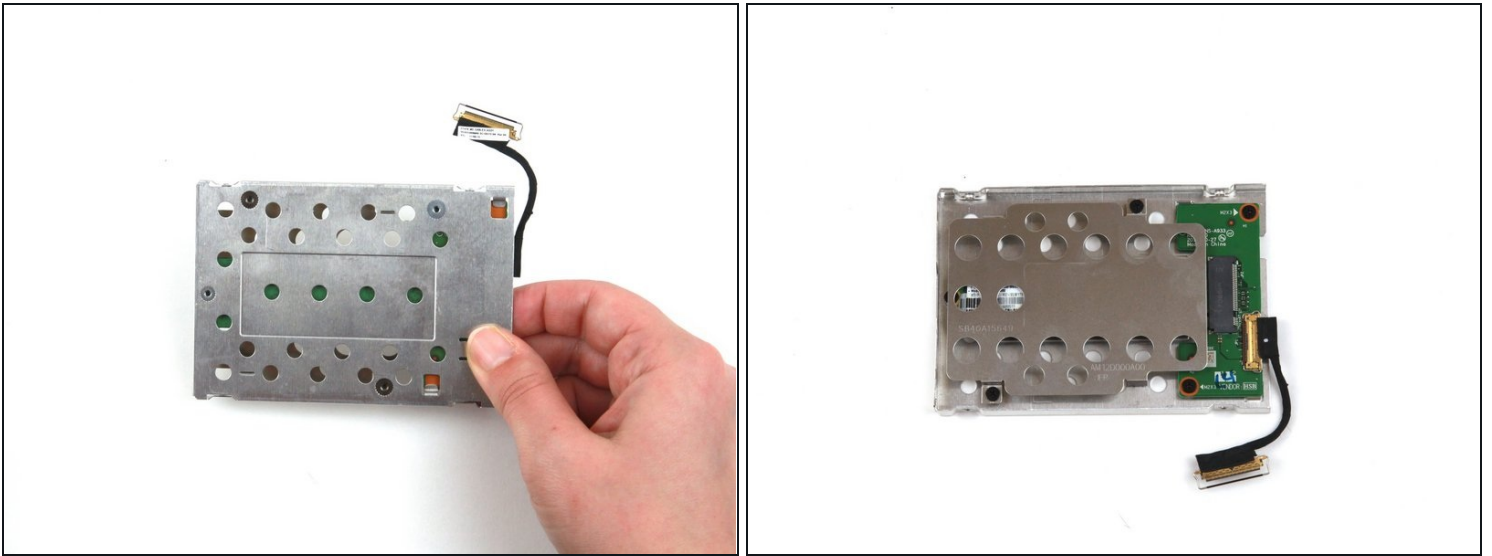
- Grab the tab on the left side of the SSD assembly, and pull up to remove it from the laptop.

Step 9 — SSD



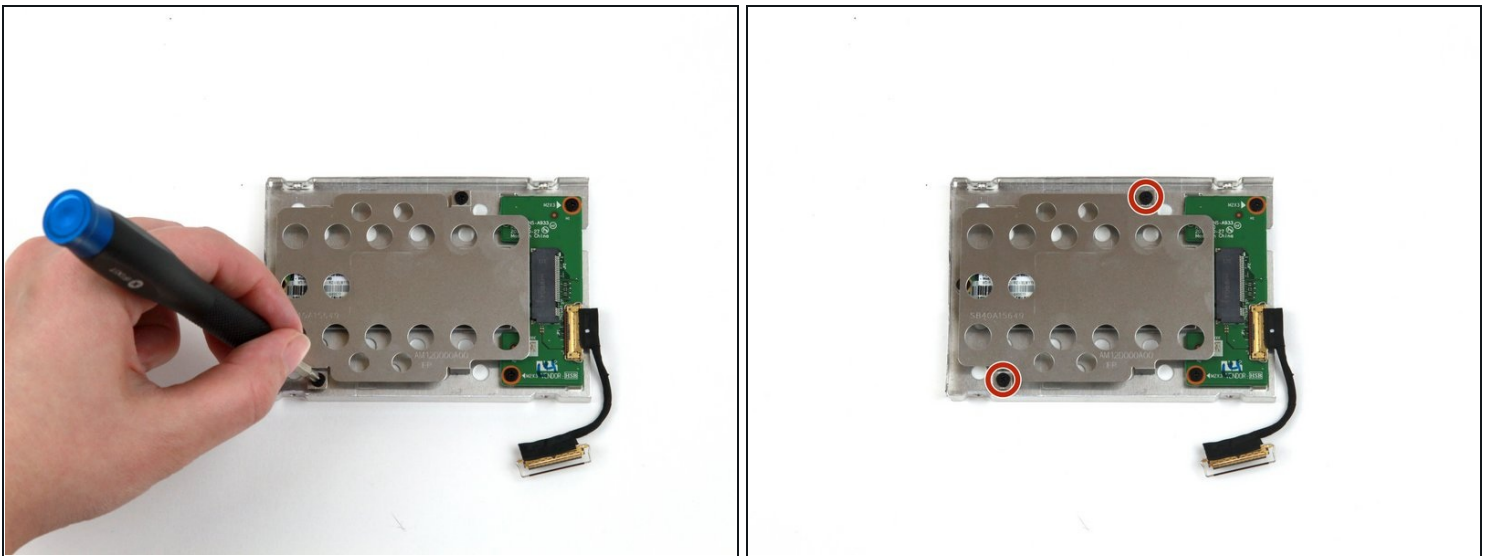
- Use your fingers to detach the plastic bracket from the SSD assembly.

Step 10



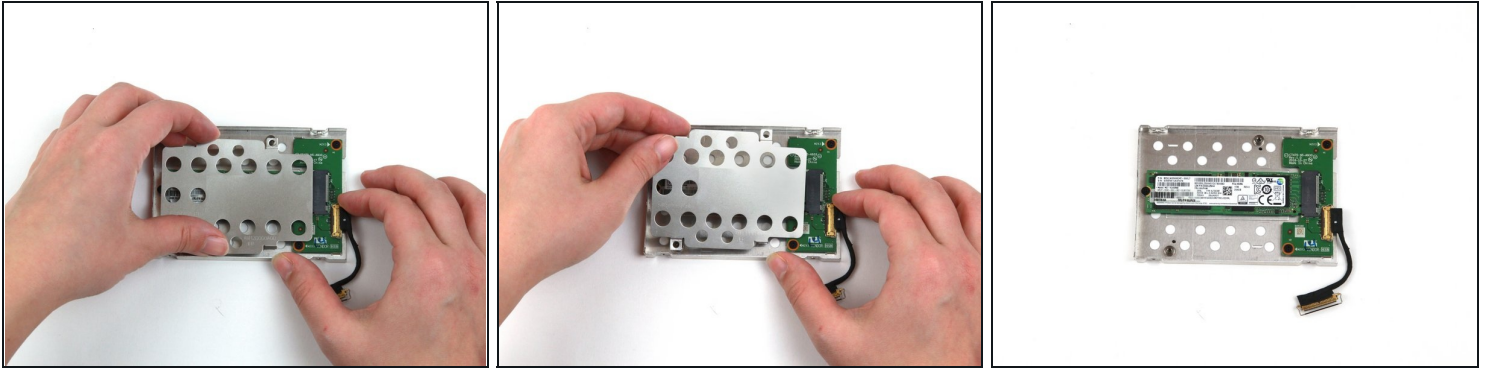
- Flip the SSD assembly over so that the green connector board is visible.

Step 11



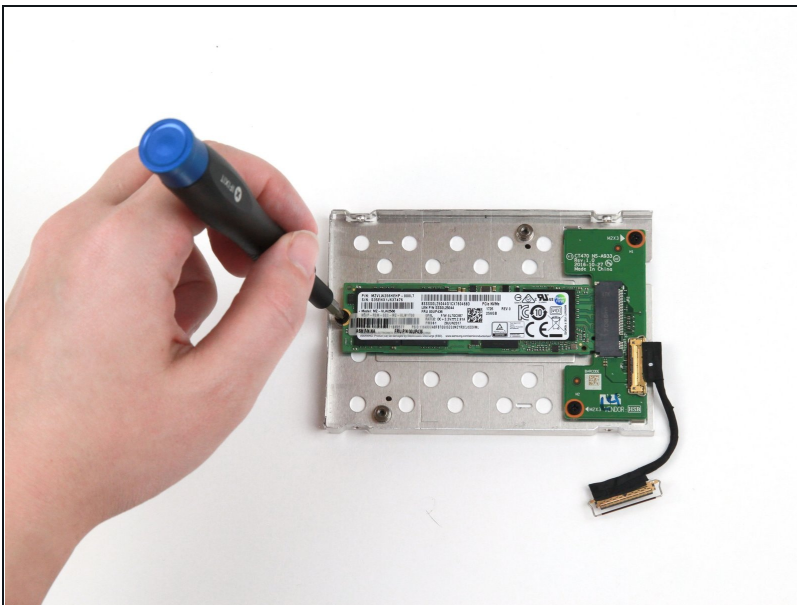
- Use a Phillips #1 screwdriver to remove the two 4 mm screws from the metal bracket.

Step 12



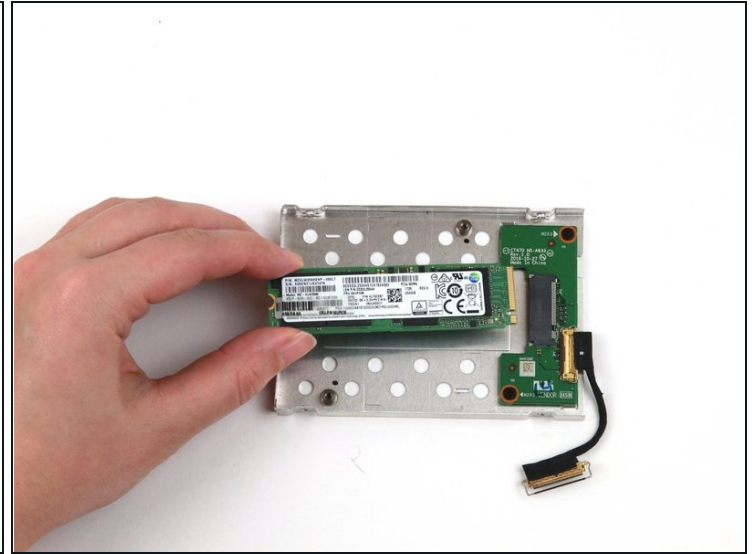
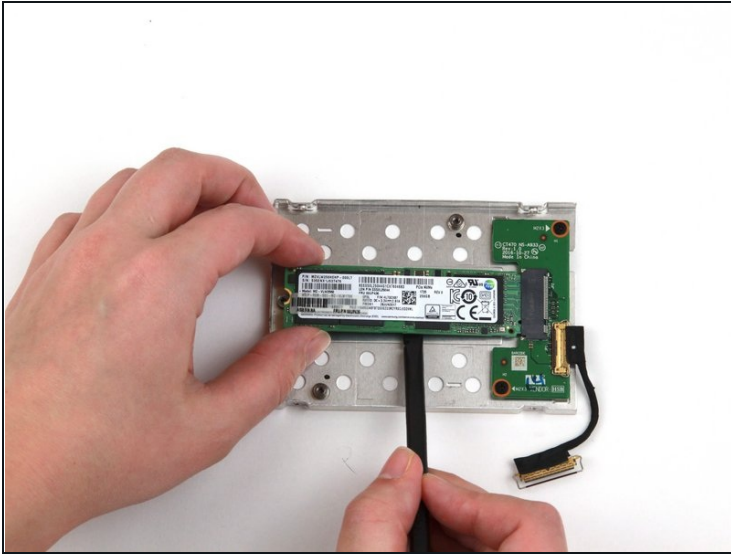
- Use your hands to lift the metal bracket up and away from the SSD assembly.
- ① There may be some adhesive attaching the metal bracket to the SSD.

Step 13



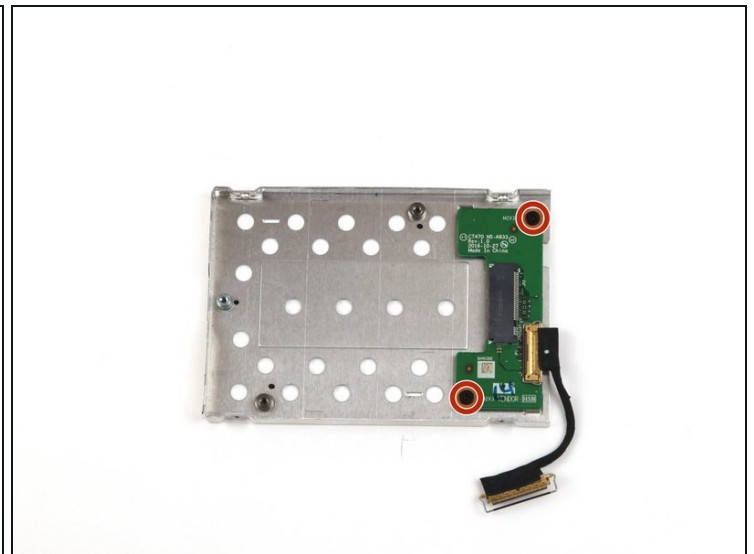
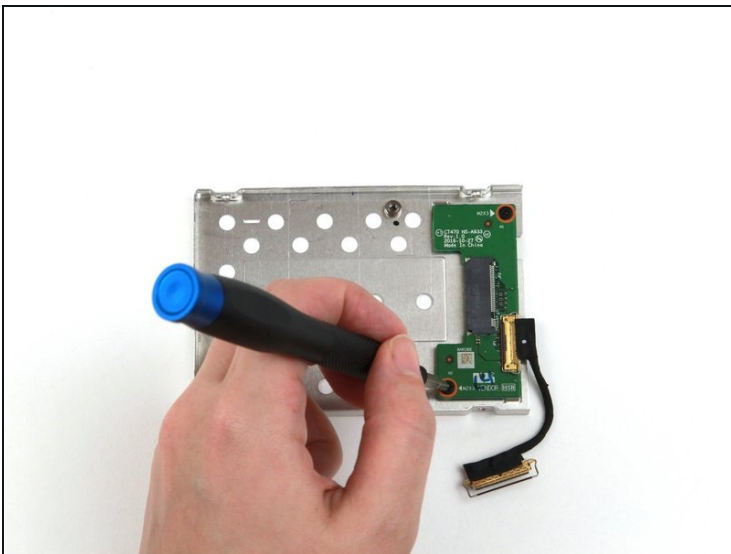
- Remove the single 4 mm screw using a Phillips #1 screwdriver.

Step 14



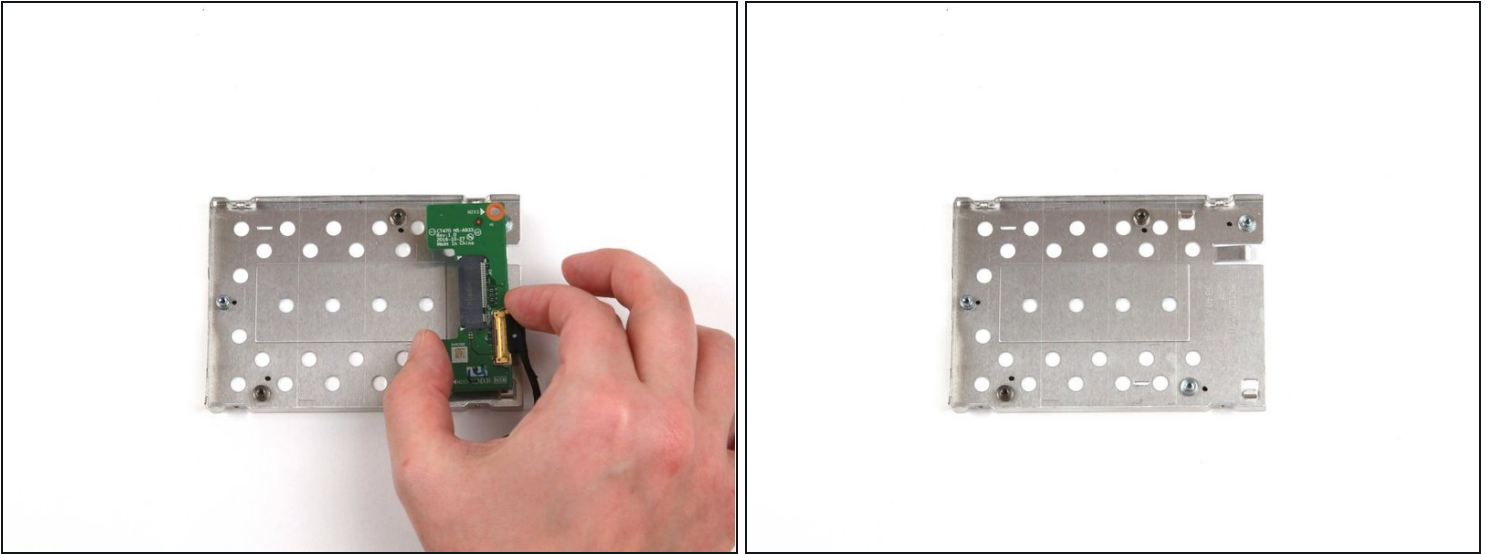
- Use the flat end of a spudger to pry the SSD up slightly and pull it out of the slot with your other hand.

Step 15



- Remove the two 4 mm screws from the SSD connector board using a Phillips #1 screwdriver.

Step 16



- Use your hand to remove the SSD connector board from the metal enclosure.

To reassemble your device, follow these instructions in reverse order.

Take your e-waste to an [R2 or e-Stewards certified recycler](#).

Repair didn't go as planned? Try some [basic troubleshooting](#), or ask our [Answers community](#) for help.