



Toshiba Satellite A210 Fan Replacement

In the guide you will learn how to remove the fan from the Toshiba Satellite A210.

Written By: Youlen



INTRODUCTION

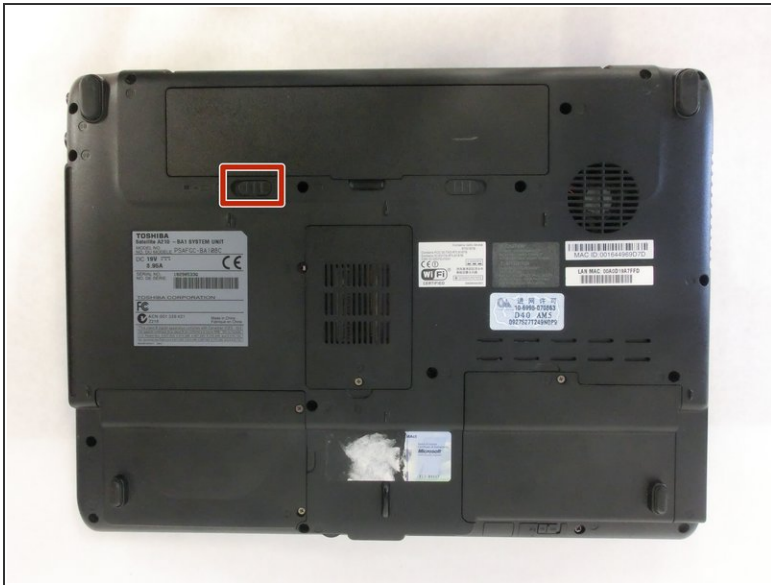
Before going in and attempting this guide you should have all required materials and tools to properly remove the fan. This may be challenging to be complete. Make sure you follow each step as it is listed.



TOOLS:

- [Phillips #0 Screwdriver](#) (1)
 - [Phillips #1 Screwdriver](#) (1)
 - [iFixit Opening Tools](#) (1)
-

Step 1 — Battery



- ⚠ Unplug the AC adapter and all other auxiliary components from the laptop.
- Slide the battery lock tab away from the center of the laptop to unlock the battery.

Step 2



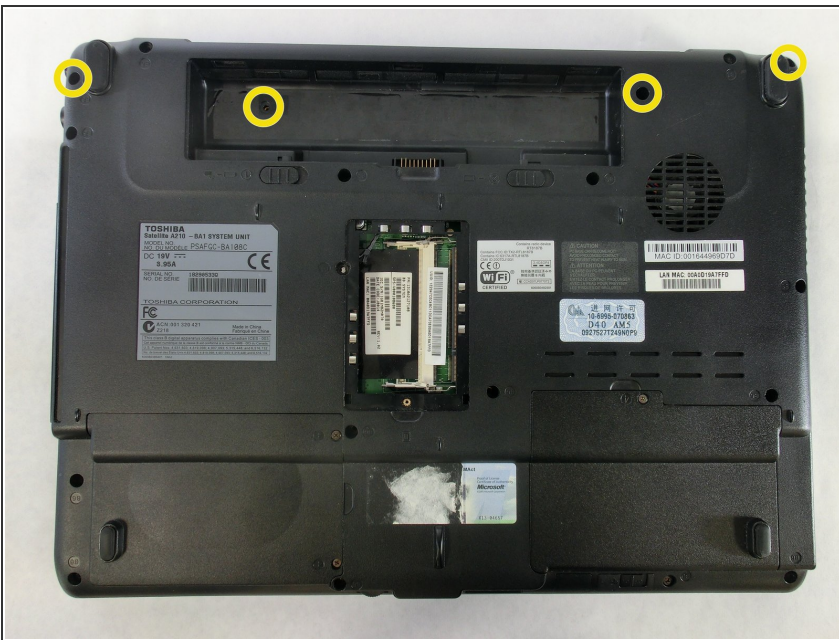
- Slide the battery release tab away from the center of the laptop and hold it.
- Lifting from the small notch between the two tabs, pull the battery out of the laptop.

Step 3 — Optical Disc Drive



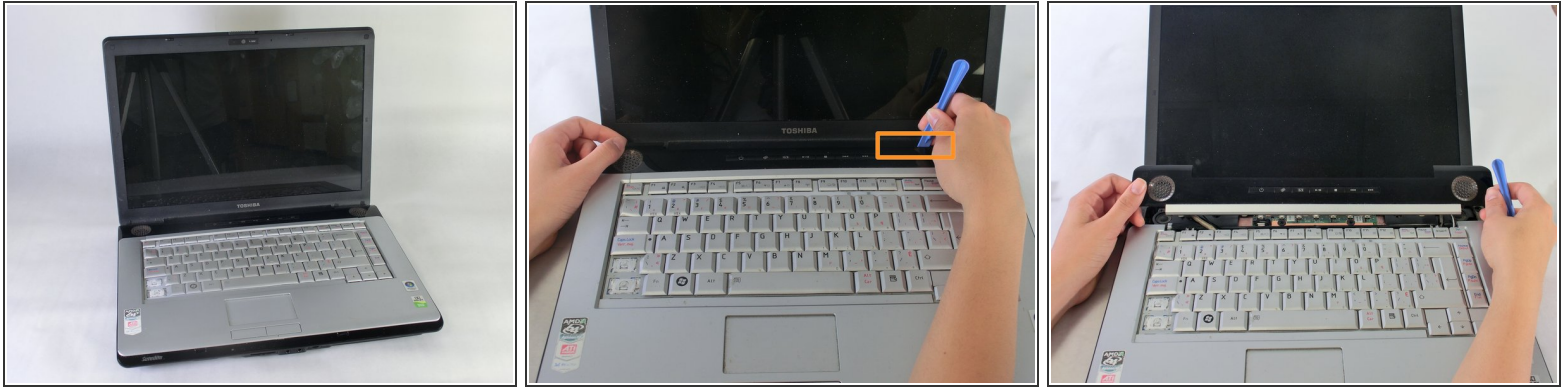
- Use a PH0 screwdriver to remove the screw holding the optical drive in place.
- Using your index finger, push the metal tab inside the RAM bay which is located directly underneath the screw-hole.
- The optical drive will then slide out.

Step 4 — Keyboard



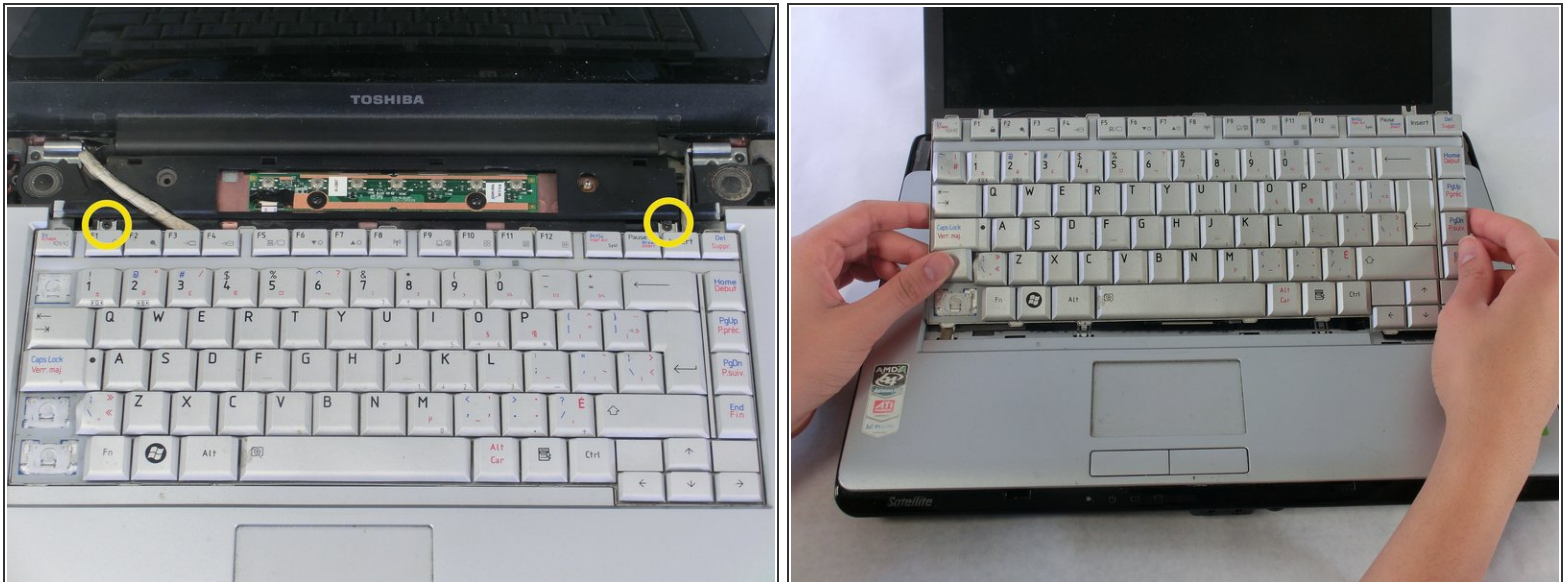
- Unscrew the 4 highlighted screws with a PH1 screwdriver.

Step 5



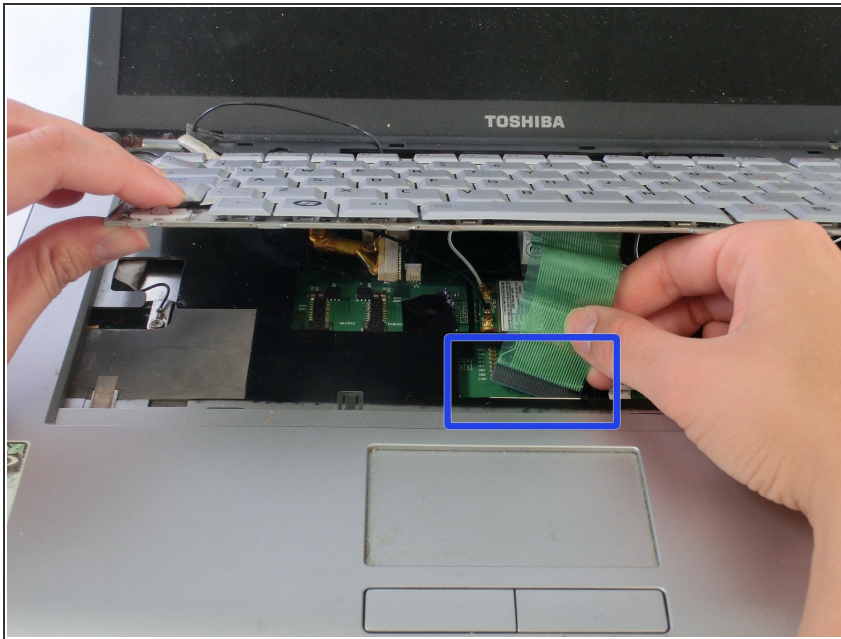
- Orient the laptop so that the screen is open and facing you.
- Slide the plastic opening tool underneath the top edge of the black plastic insert.
- Pull it off and set aside.

Step 6



- Remove the 2 PH1 screws.
- ⚠ Lift the keyboard from the top being careful not to remove it fully. There is still a ribbon cable that connects the keyboard to the laptop.

Step 7



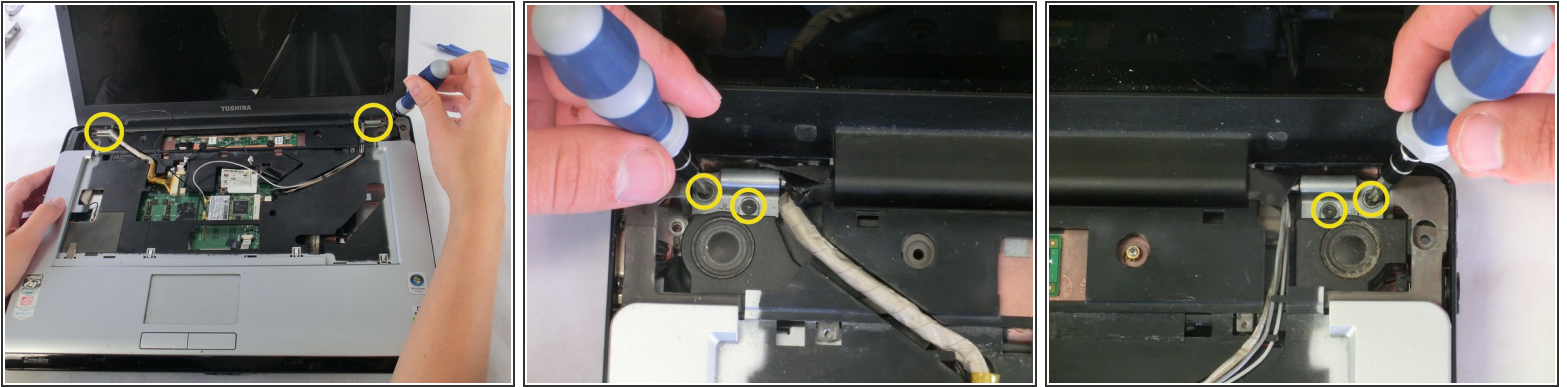
- Disconnect the keyboard ribbon cable and remove the keyboard from the laptop.

Step 8 — Fan




- Close the laptop and flip it over.
- Unscrew the 11 yellow circled screws with a PH1 screwdriver. These screws are larger in size.
- Unscrew the 2 red and yellow circled screws with a PH1 screwdriver. These screws are shorter and thicker than the previous.
- Unscrew the 1 green and yellow circled screw with a PH1 screwdriver. This screw is longer and thinner than the previous.

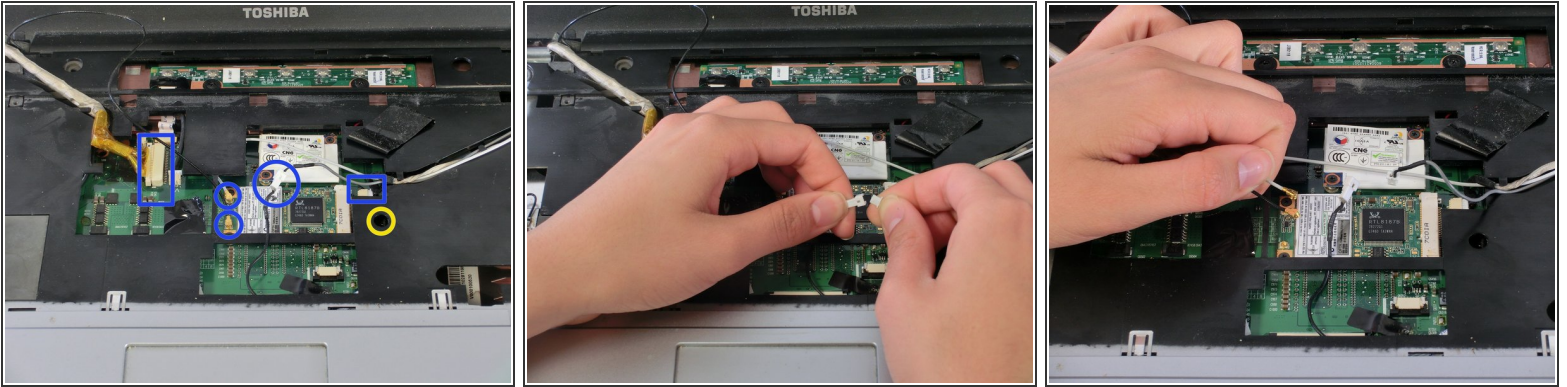
Step 9



- Flip the laptop over and open it so that the screen is facing you.
- Locate the hinges on either side of the screen, which secure the display to the body of the laptop.
- Unscrew the 2 screws in each hinge with a PH1 screwdriver.

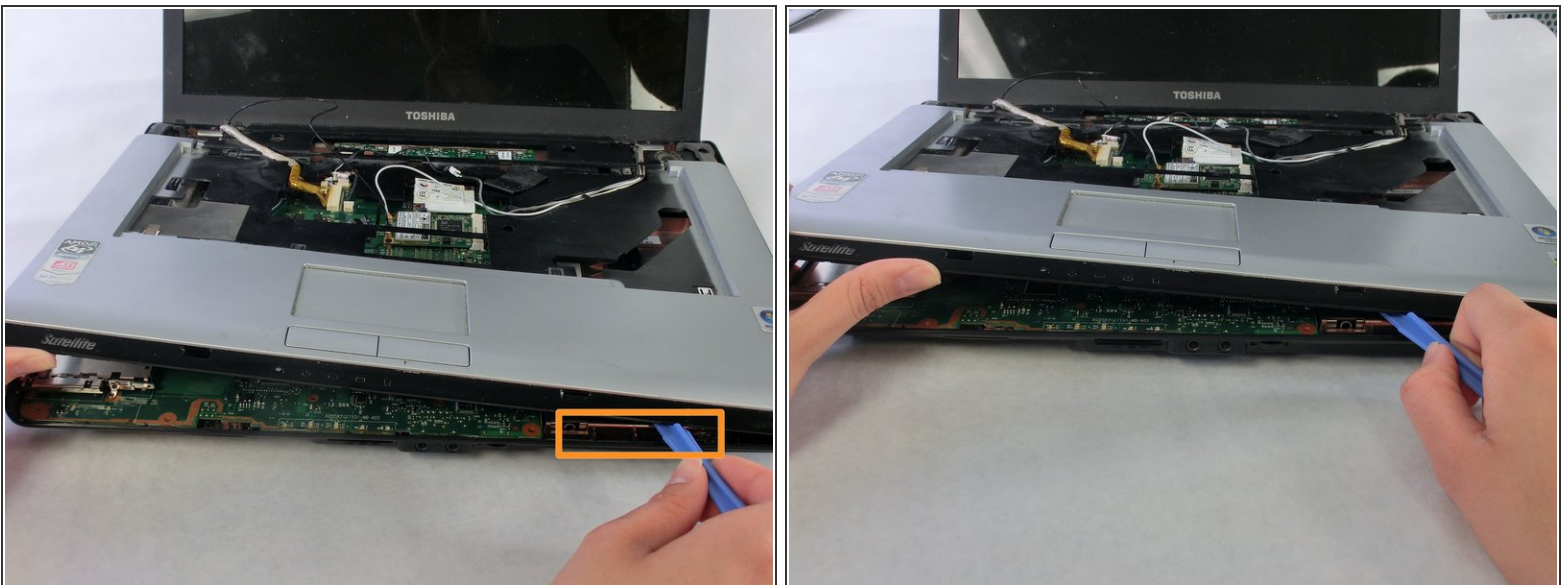
 The display is no longer connected to the laptop and could fall. Be careful not to drop it during the next steps.

Step 10



- Unfasten the connectors from the highlighted locations.
- Disconnect by gently pulling on the fasteners which connect the wires to the laptop.
- ⚠ Pulling directly on the wires could cause permanent damage to the connectors or the wires themselves.
- Unscrew the screw indicated by the yellow circle.

Step 11



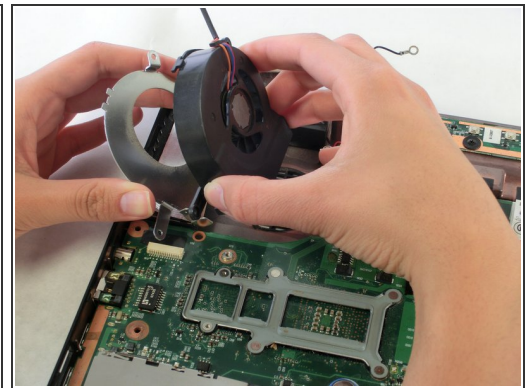
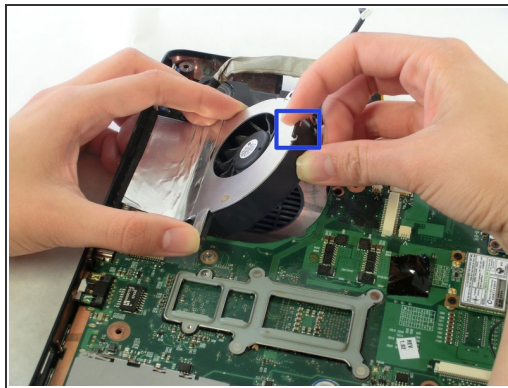
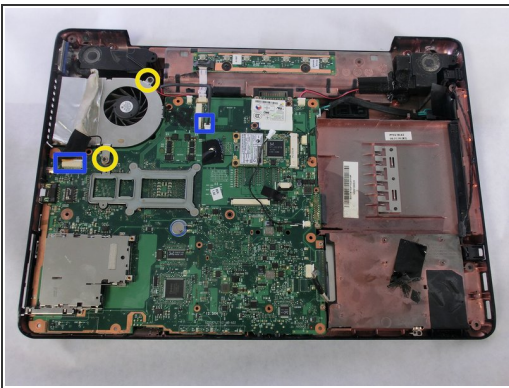
- Slide the plastic opening tool underneath the edges of the upper casing, which is shown in the images.

Step 12



- The LCD screen can now be removed from the laptop.
- Lift the upper plastic casing and remove it from the lower half of the laptop.

Step 13



- Unfasten the two connections shown.
 - Unscrew the two screws securing the fan to the laptop. Use a PH1 for the screw that is adjacent to the speaker and a PH0 for the other screw.
 - Lift up the fan and pull the black plastic tab away from the fan housing. Remove the fan.
- ⚠ Do not remove the metal fan housing. It is taped to a metal heat-sink and should not be removed.

To reassemble your device, follow these instructions in reverse order.