



Lenovo ThinkPad T470 Coin Cell Battery Replacement

Use this guide to replace the coin cell battery...

Written By: Kristen Gismondi



INTRODUCTION

Use this guide to replace the coin cell battery in your Lenovo ThinkPad T470.

A coin cell battery, also called a CMOS battery, is responsible for remembering specific information such as the computer's date, time, and BIOS settings when the laptop is turned off.

When the coin cell battery fails, an error message will appear when you power on your laptop.

Make sure to [disable the internal battery](#), power down your device, and disconnect from any external power sources before you begin.

TOOLS:


Phillips #1 Screwdriver (1)
ESD Safe Blunt Nose Tweezers (1)

PARTS:

01HX684 - Lenovo Laptop CMOS
Battery - Genuine (1)

Step 1 — External Battery



 Before you begin this guide, make sure to [disable the internal battery](#), power down your device, and disconnect from any external power sources.

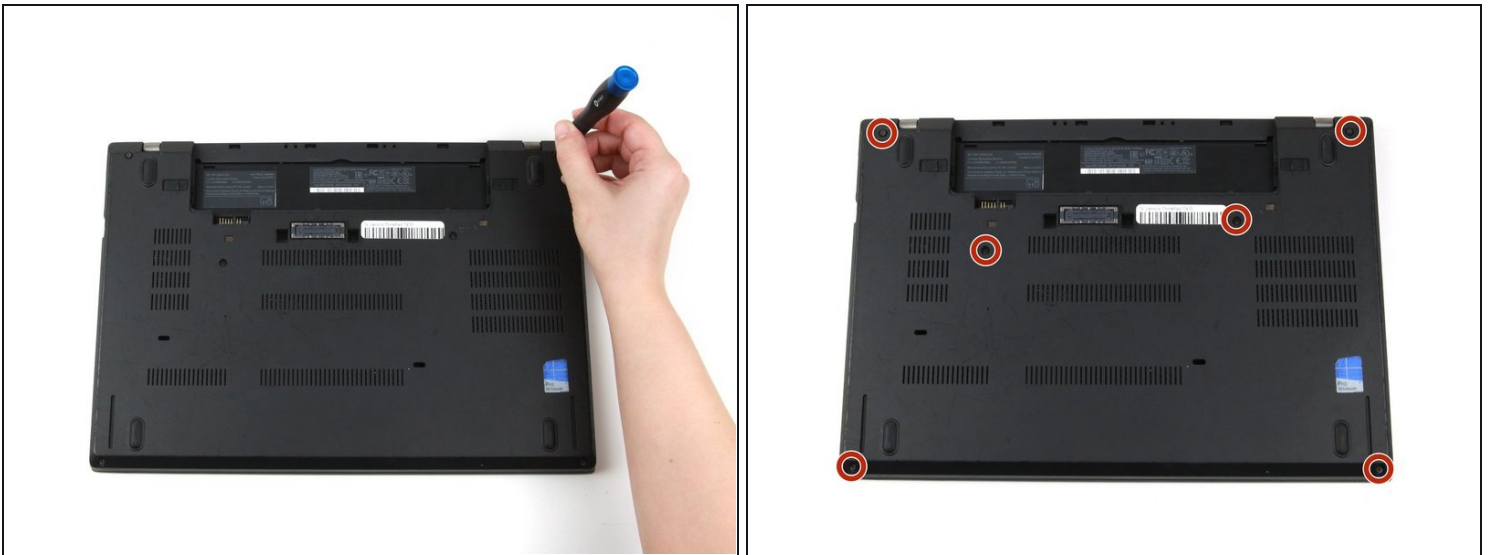
- Place the laptop so that the bottom is facing upwards.
- Slide the latch on the left side of the battery to the left until it clicks in place.

Step 2



- Slide the latch on the right side of the battery to the right and hold it in place with your thumb.
- Use your other hand to slide the battery towards the back of the laptop.
- Lift the battery up and away from the laptop.

Step 3 — Bottom Cover



- Use a Phillips #1 screwdriver to loosen the six captive screws on the bottom cover of the laptop.

Step 4



- Use your hands to pull up on the back cover and release the plastic clips starting on the bottom side of the battery compartment.

⚠ Potential for device damage: Be sure to detach the plastic clips in this area first. You risk cracking the bottom cover if you attempt to detach it from around the edges of the laptop first.

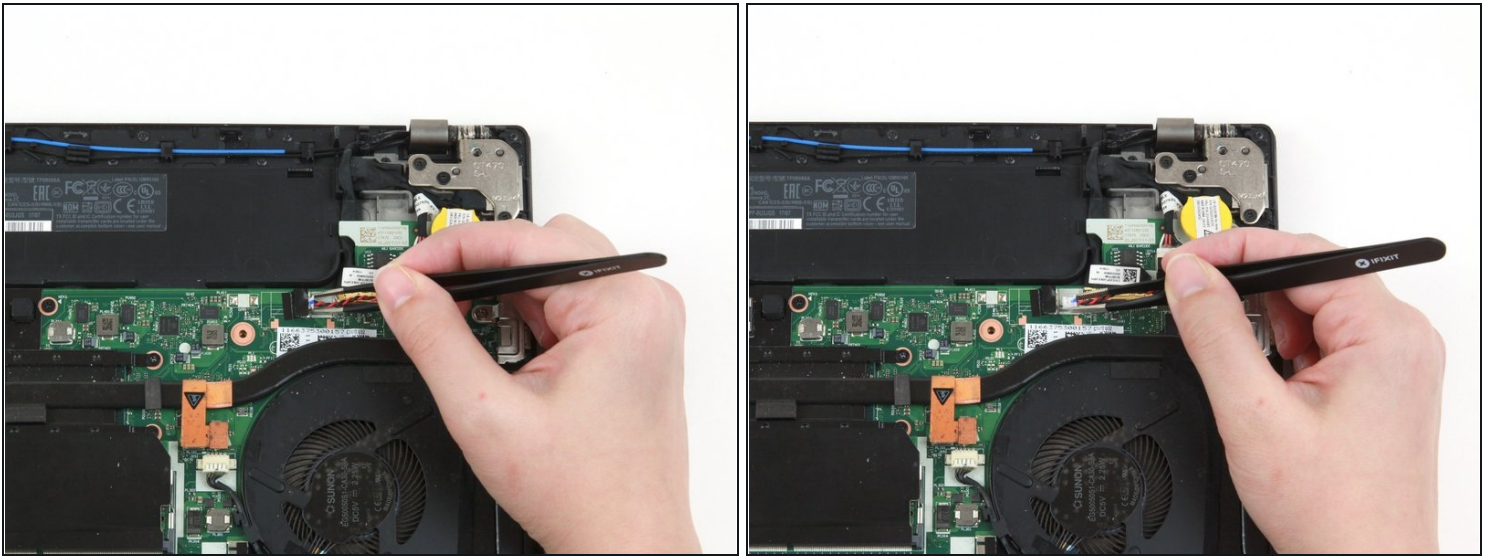
- Use your hands to pull up on the right side of the bottom cover to release the plastic clips.
- Use your hands to pull up on the left side of the bottom cover to release the plastic clips.

Step 5



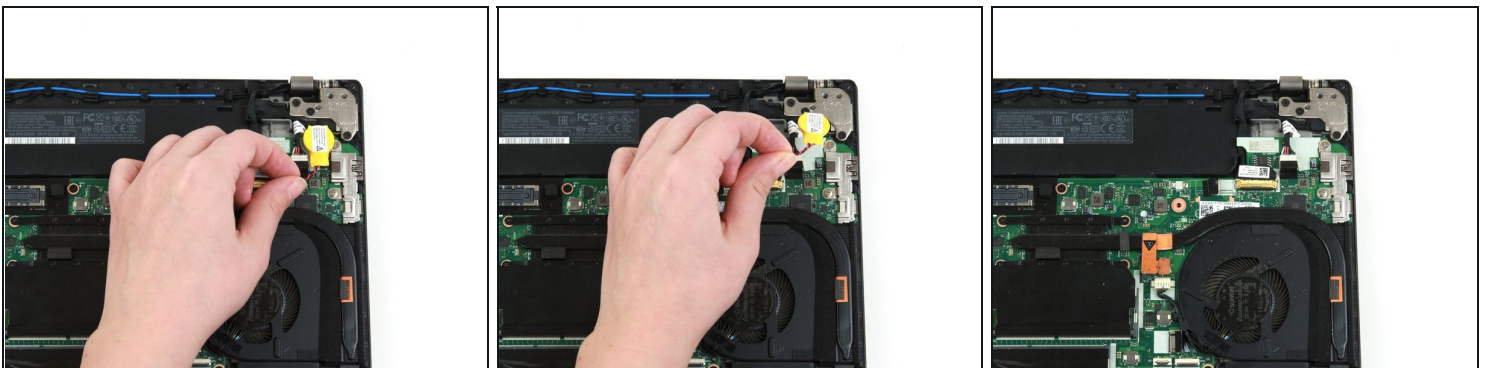
- Remove the bottom cover from the laptop.
- ✦ Disconnect the battery from the board before continuing.

Step 6 — Coin Cell Battery



- Use a pair of blunt nose tweezers to pull the white connector out of its socket.
- ① This connector may be difficult to remove. You can use a pair of tweezers to gently rock the connector back and forth until it is free from the socket.

Step 7



- Grab the wire attached to the coin cell battery, and lift it up and out of the laptop.

To reassemble your device, follow these instructions in reverse order.

Take your e-waste to an [R2 or e-Stewards certified recycler](#).

Repair didn't go as planned? Try some [basic troubleshooting](#), or ask our [Answers community](#) for help.

