



# Lenovo ThinkPad T470 Keyboard Replacement

This guide will show you how to replace the...

Written By: Kristen Gismondi



# INTRODUCTION

This guide will show you how to replace the keyboard in your Lenovo ThinkPad T470 laptop.

A properly functioning keyboard will register keystrokes on the laptop's display. Functioning keys will pop back up to their normal position after typing and will feel securely attached to the keyboard.

A keyboard that is malfunctioning may only register some keystrokes (or no keystrokes at all) on the laptop's display. Certain keys may get stuck when pressed down or keycaps may feel loose and wobbly when typing.

If you suspect that your keyboard issues are software-related, visit [this PCMag article](#) for more information.

Make sure to [disable the internal battery](#), power down your device, and disconnect from any external power sources before you begin.



## TOOLS:

[Phillips #1 Screwdriver](#) (1)  
[Spudger](#) (1)




## PARTS:

[Lenovo ThinkPad T470 Keyboard](#) (1)  
[Lenovo ThinkPad Keyboard - 01AX528](#) (1)

---

## Step 1 — External Battery



 Before you begin this guide, make sure to [disable the internal battery](#), power down your device, and disconnect from any external power sources.

- Place the laptop so that the bottom is facing upwards.
- Slide the latch on the left side of the battery to the left until it clicks in place.

## Step 2



- Slide the latch on the right side of the battery to the right and hold it in place with your thumb.
- Use your other hand to slide the battery towards the back of the laptop.
- Lift the battery up and away from the laptop.

## Step 3 — Keyboard



- Loosen the two captive Phillips #1 screws on the back cover of the laptop.

## Step 4



- Place the laptop so that the top is facing upwards.
- Open the lid of the laptop.

## Step 5



- Place your fingers on the bottom edge of the keyboard.
- Apply a small amount of pressure to push the keyboard towards the screen.



## Step 6



- Grab the bottom edge of the keyboard with your hands, and flip the keyboard upside-down, so it rests on the bottom of the laptop.

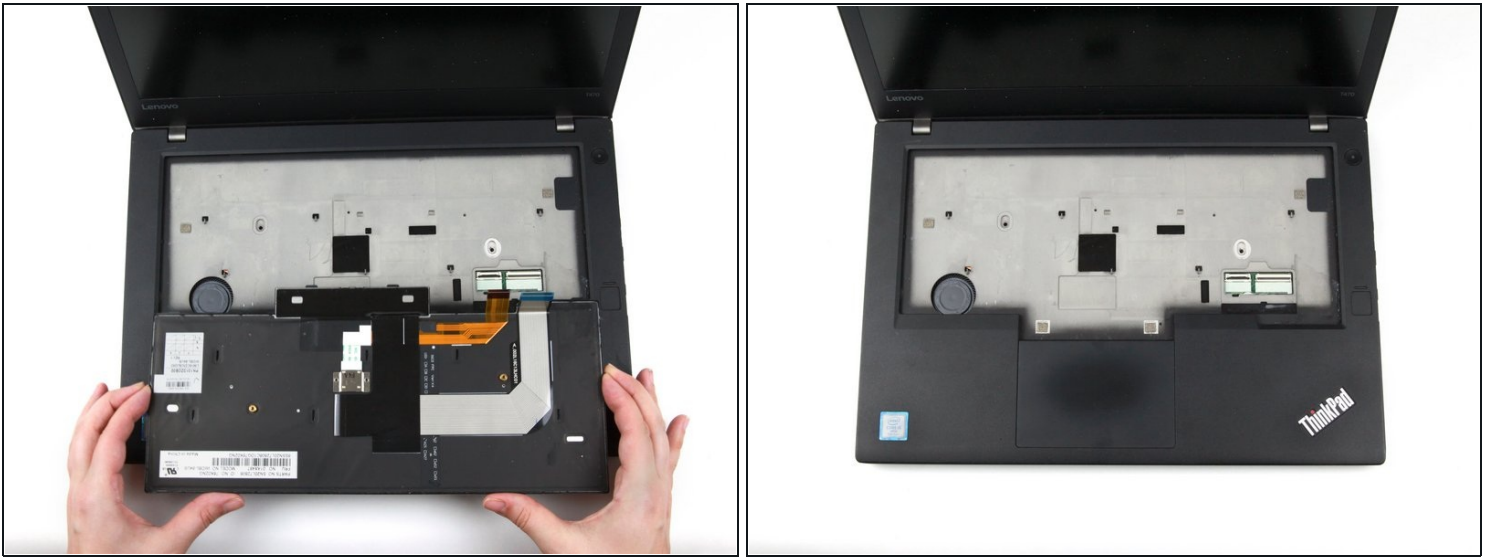
⚠ Potential for device damage: The keyboard is still attached to the rest of the laptop, so be gentle when flipping it over.

## Step 7



- Use the flat end of a spudger to flip up the locking flaps securing each of the two ribbon cables.

## Step 8



- Use your hands to lift the keyboard up and away from the laptop.

To reassemble your device, follow these instructions in reverse order.

Take your e-waste to an [R2 or e-Stewards certified recycler](#).

Repair didn't go as planned? Try some [basic troubleshooting](#), or ask our [Answers community](#) for help.