



DualShock 4 Ribbon Cable Replacement

If your DualShock 4 controller consistently...

Written By: Mohamed Ahmed



INTRODUCTION

If your DualShock 4 controller consistently fails to charge, use this step-by-step guide to replace a faulty ribbon cable as it is typically the root of the problem.

Before following this guide, disconnect your controller from the PS4 console.

TOOLS:

[Microfiber Cleaning Cloths](#) (1)
[Phillips #00 Screwdriver](#) (1)
[1 x Opening Picks](#) (1)
[Spudger](#) (1)
[Tweezers](#) (1)

PARTS:

[DualShock 4 Controller Charging Assembly \(JDS-001\)](#) (1)
[DualShock 4 Controller Charging Assembly \(JDS-030\)](#) (1)

Step 1 — Check your controller model



- Check the model number on the back of your controller. This guide was written using model **CUH-ZCT1U**. If you have another model, the guide procedure and replacement parts may differ slightly.
- ⓘ If you have the second generation DualShock 4, model **CUH-ZCT2U**, [use these guides](#).

Step 2 — Unfasten the rear case



- ❗ If you need to stabilize your controller during this repair, lay it on a soft surface such as a [microfiber cloth](#).
- Use a Phillips screwdriver to remove the four 6.4 mm-long screws securing the rear case.

Step 3 — Remove the L1 button



- Use an opening pick to pry each corner of the L1 button from the front case.
 - ❗ Cover the button to prevent it from ejecting out of your workspace.
- Remove the button.

Step 4 — Remove the R1 button



- Use your opening pick to pry and remove the R1 button, just as you did for the L1 button.

Step 5 — Unclip the rear case



① Six plastic clips secure the rear case to the front case. The next four steps demonstrate how to release these clips before you can open the controller.

- Insert your opening pick at a downward angle between the front case and rear case, halfway between the handle and the action buttons.
- Slide your pick toward the handle and pry up to release the first clip.
- Repeat this procedure on the other side of the controller to release the second clip.

Step 6



- Two more clips secure the rear case near the extension port and the headphone jack.
- Insert your opening pick between the front case and rear case at either side of the ports.
- Twist your pick to unclip this section of the rear case from the front case.
 - ⓘ If the rear case feels stuck, insert and twist your pick from different angles.

⚠ Don't open the controller yet, as it's still held together by two very delicate clips near the triggers.

Step 7



- ⓘ The final two clips are very delicate, and must be disengaged from inside the controller. If you break them, don't worry—it won't affect this repair or your controllers functionality.
- Locate the clips by looking through the gap above the R2 or L2 buttons.

Step 8



- Insert the point of a spudger through the gap above the R2 button and push the retaining clip outward.
- While pushing the clip outward, slowly pull the rear case away from the front case until you feel them separate.
⚠ Don't fully open the controller until each of the R2 and L2 clips have been disengaged.
- Repeat this procedure for the clip near the L2 button.

Step 9 — Remove the rear case



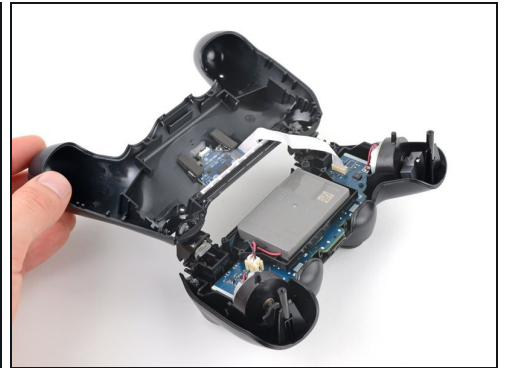
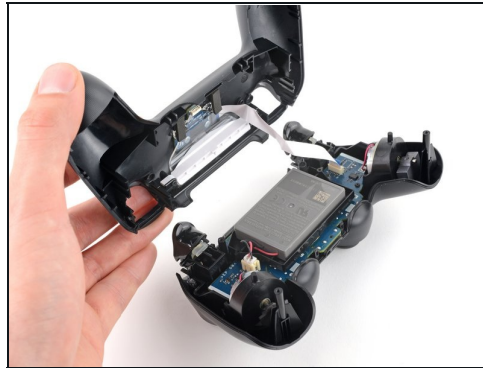
- Press the R2 button and slide the rear case over it.

Step 10



- Press the L2 button and slide the rear case over it.

Step 11



- Flip the rear case over the top of the controller and lay it down, being careful not to strain the interconnect cable.

Step 12 — Disconnect the interconnect cable



- Use [tweezers](#) or your fingers to remove the interconnect cable by pulling its blue pull tab straight out of the socket.
- ☑ During reassembly, reconnect the cable with its blue pull tab facing the outside of the controller.

Step 13 — Unfasten the light guide bracket



- Use your Phillips screwdriver to remove the two 6.4 mm screws securing the light guide bracket to the rear case.

Step 14 — Remove the light bar bracket



- Remove the black spacer and white bracket from the light guide.

Step 15 — Peel the foam pads



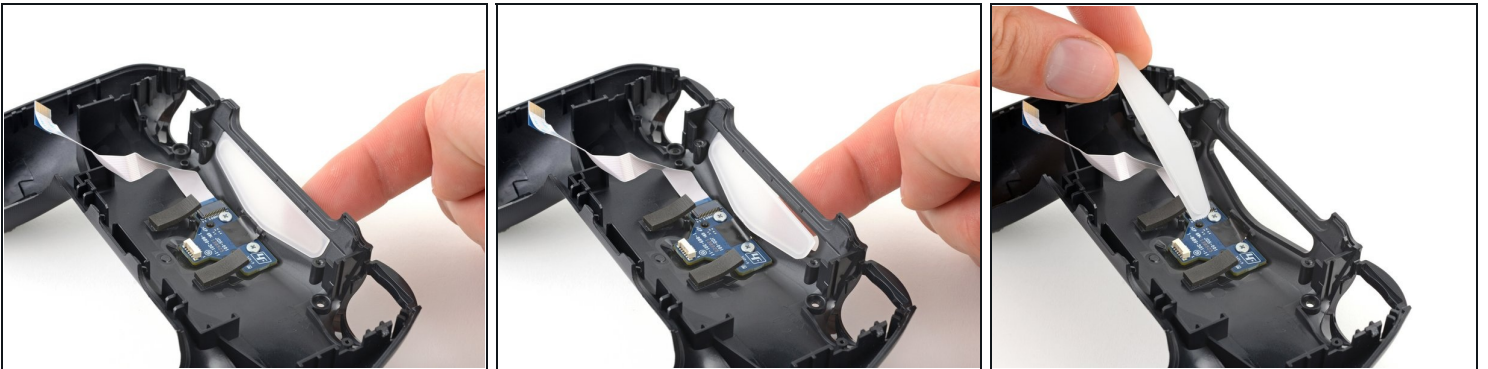
- Peel both foam pads from the light guide.

Step 16 — Remove the light guide



- Grab and lift the light guide from its alignment pegs on the rear case.
- Remove the light guide.

Step 17 — Remove the light diffuser



- Push the light diffuser through the inside of the rear case and remove it.

Step 18 — Ribbon Cable



- Use your thumb to hold down the clear plastic cover to create space to remove the ribbon cable.
 - With the cover held down, use [tweezers](#) to remove the faulty ribbon cable.
-

To reassemble your device, follow these instructions in reverse order.