



Compaq Presario CQ60 WiFi Card Replacement

Written By: Mike B





TOOLS:

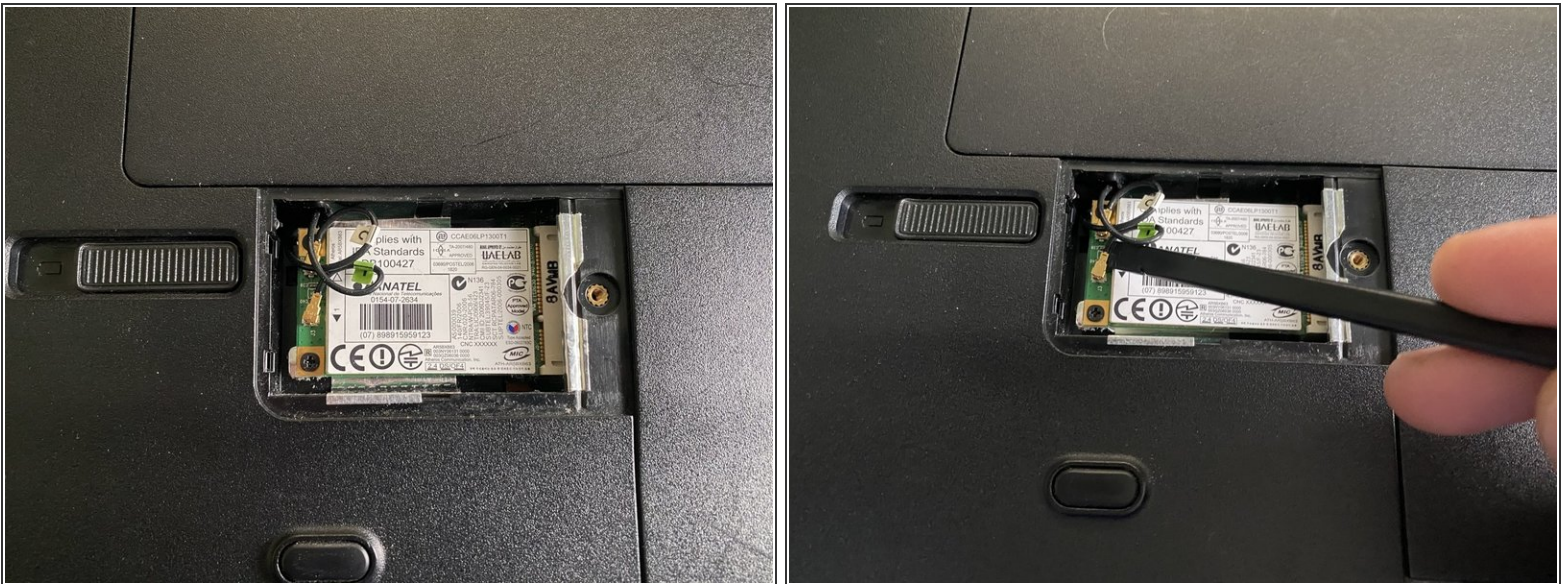
- [Phillips #0 Screwdriver](#) (1)
 - [Spudger](#) (1)
-

Step 1 — Remove cover



- Loosen phillips screw
- Lift and remove cover

Step 2 — Remove lower aerial cable



- Using a spudger, remove the lower aerial cable

Step 3



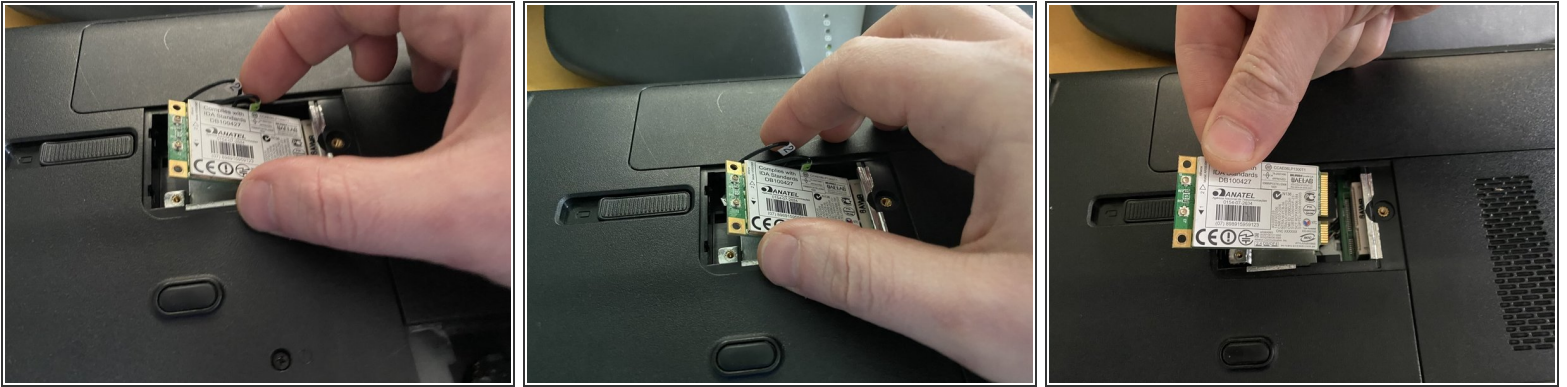
- Remove the upper aerial cable

Step 4



- Remove 2 M2x3mm phillips screws

Step 5



- Lift card and screws end using spudger

To reassemble your device, follow these instructions in reverse order.