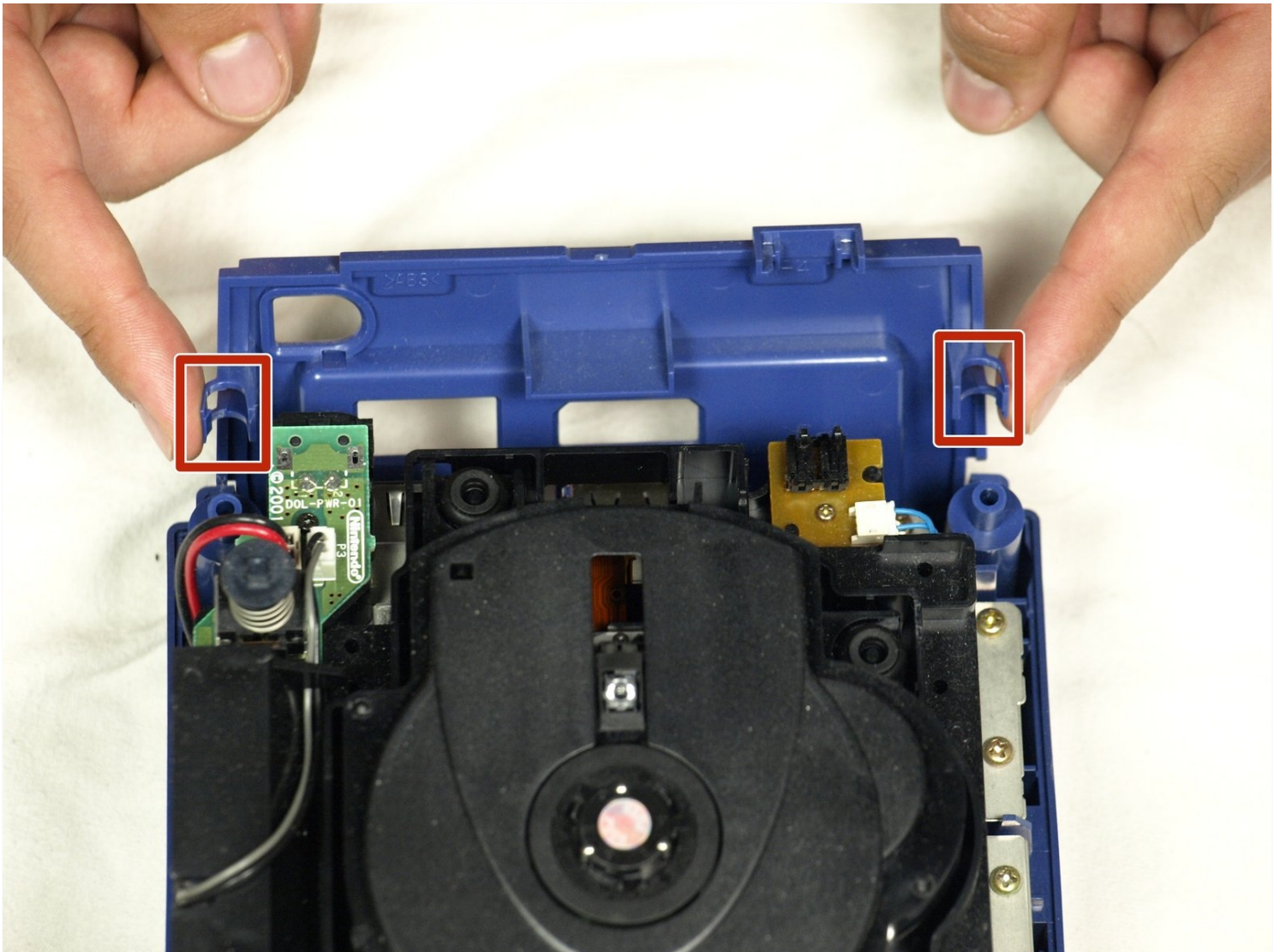




Nintendo GameCube Front and Back Panel Replacement

Removing these panels allows further access to...

Written By: dcarlin



INTRODUCTION

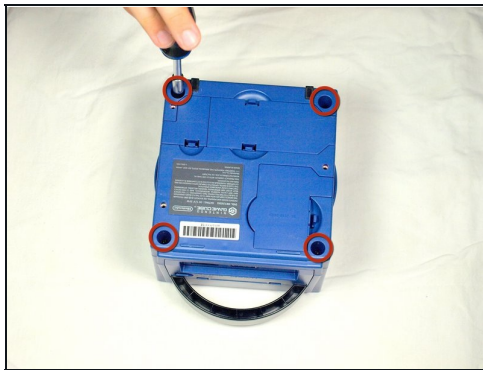
Removing these panels allows further access to the GameCube's components.

TOOLS:

Gamebit 4.5mm (1)

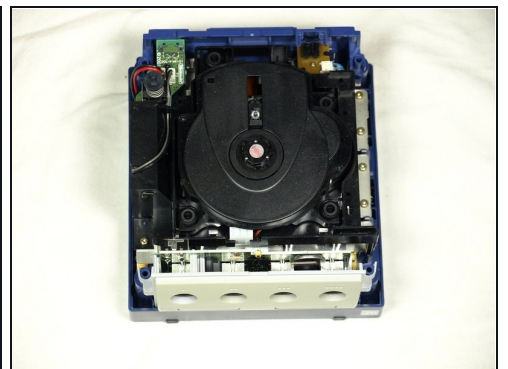
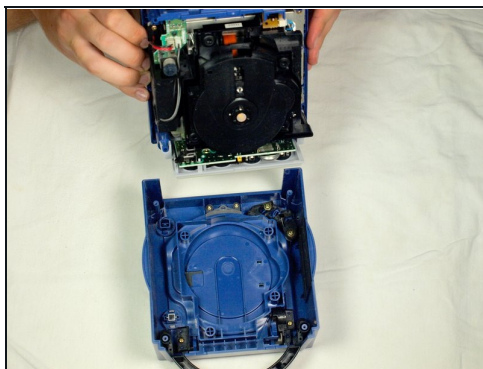
Phillips #2 Screwdriver (1)

Step 1 — Top Case



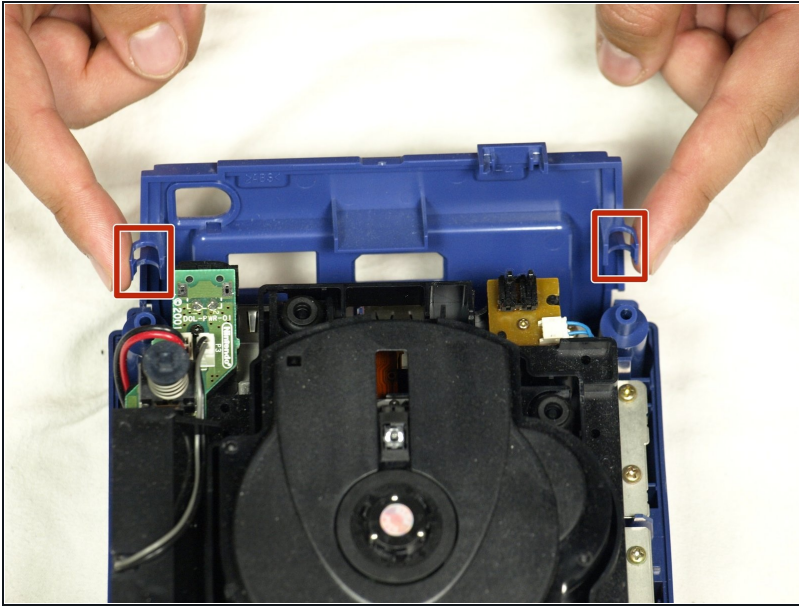
- Turn over the Gamecube so that the bottom side is facing up.
- Use the 4.5 mm Gamebit screwdriver to remove all four screws.

Step 2



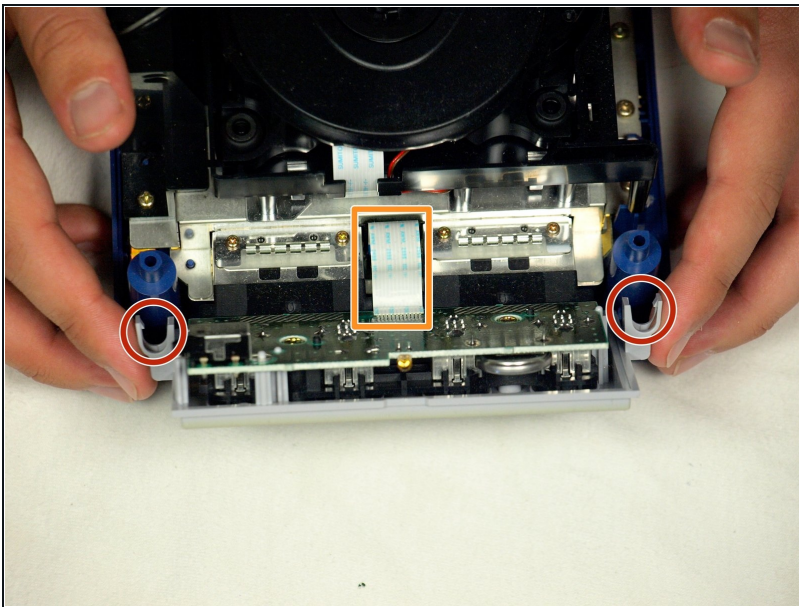
- With the bottom side of the GameCube facing upward and the screws removed, carefully pull the outer shell of the unit away from the top half.
- Move the GameCube so that the inside is facing upwards.

Step 3 — Removing the back panel



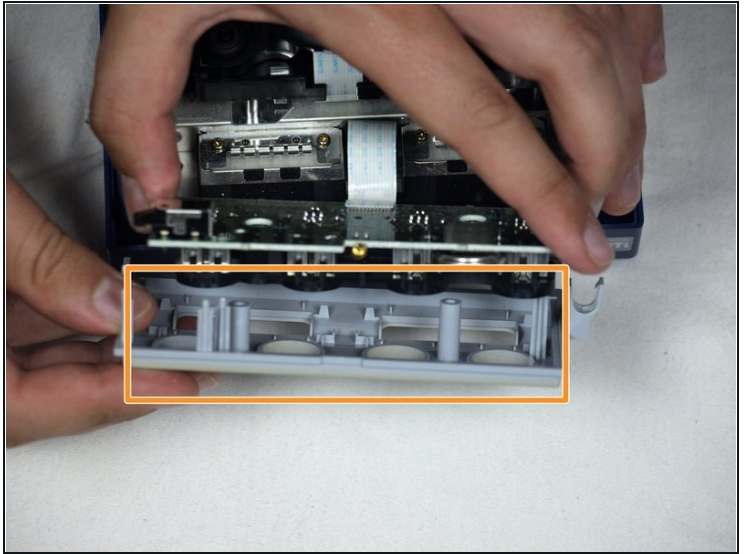
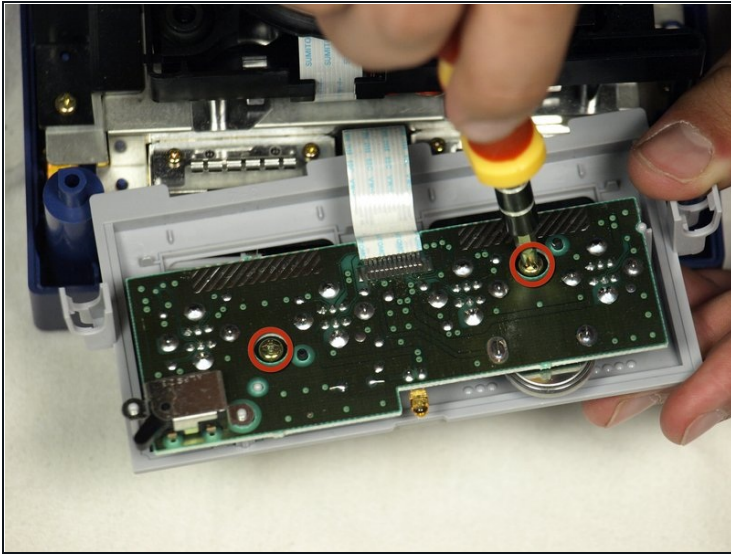
- Gently press down on the clips located on either side of the back panel.
- Carefully remove the back panel from the GameCube.

Step 4



- Unclip the controller ports at the front of the unit.
 - ⚠ A ribbon cable (outlined in orange) is still attached to the unit. **Do not disconnect this cable.**
- ☑ Controller ports are where the controllers plug into the game console, and are a half circular shape.

Step 5 — Separate the casing



ⓘ This step may not be necessary depending on your end goal

- Use a Phillips #2 screwdriver to remove the two screws on the back of the control port.
- Carefully separate the gray outer casing of the control port and the circuit board.

To reassemble your device, follow these instructions in reverse order.