



Toshiba Satellite L45-S7423 Hard Drive Replacement

The hard drive stores all of the critical...

Written By: Stephen Sippel



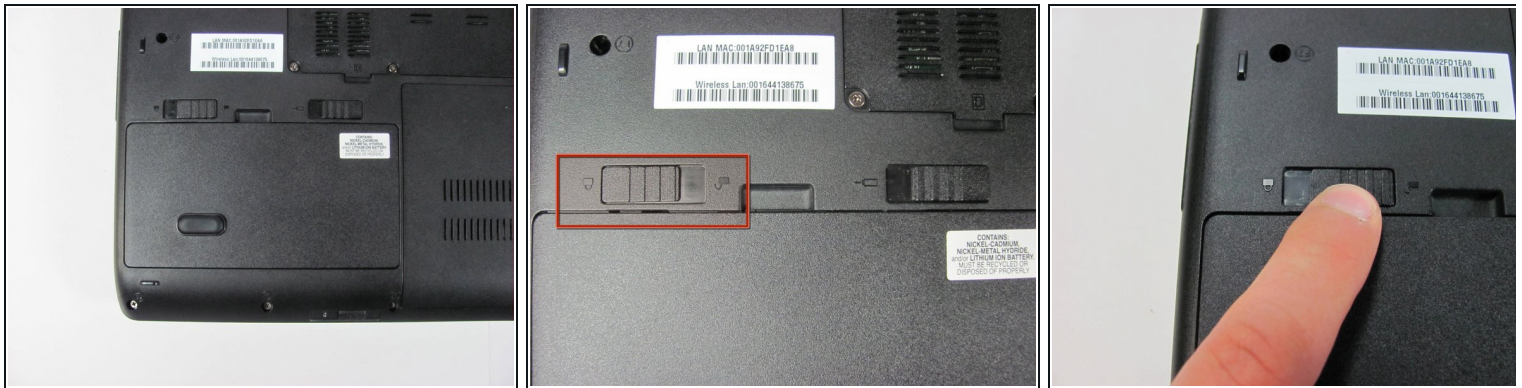
INTRODUCTION

The hard drive stores all of the critical information required by the laptop for proper functioning and saves all the data files created by the user. The hard drive is designed to be easily removed to allow for easy replacement in cases where the device breaks or upgraded if the user requires more memory.

TOOLS:

Phillips #00 Screwdriver (1)

Step 1 — Battery



- Make sure the battery lock switch is switched to the unlocked position.
- The battery is unlocked when the battery lock switch is slid to the side with an image of an unlocked lock.

Step 2



- Slide the battery release switch to the left.

i The switch is spring loaded, so you must hold the switch in place while removing the battery.

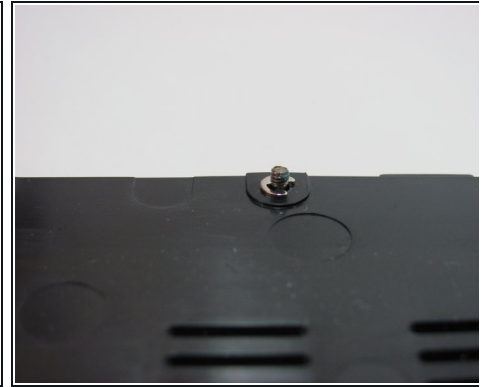
Step 3



- Using a finger, lift up the battery.

★ The battery release switch must be held in place.

Step 4 — Hard Drive



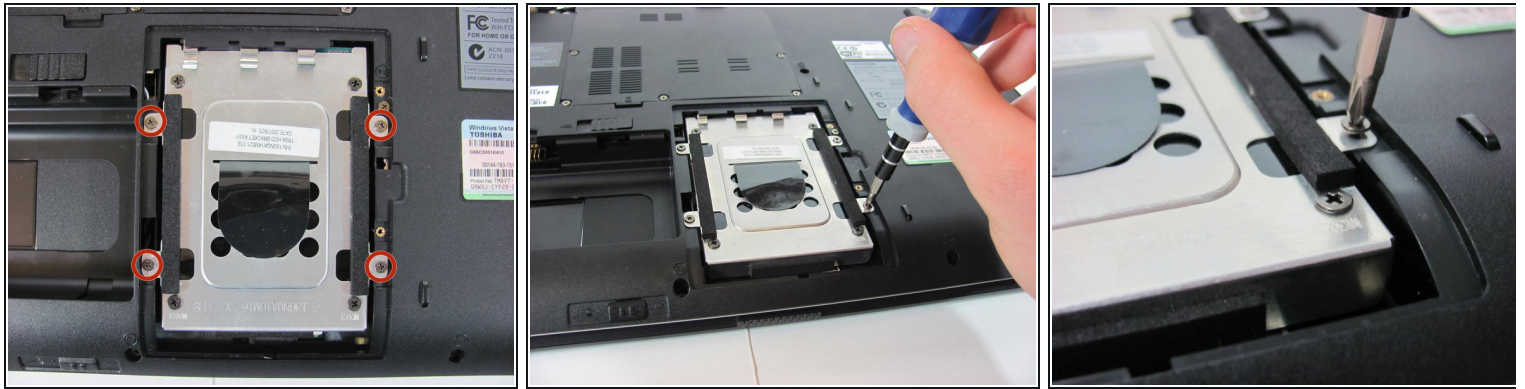
- Remove the two Phillips screws holding the panel in place.
- ⓘ These screws cannot be removed completely from the panel. They are fastened to the panel to avoid loss.

Step 5



- To remove, lift up the panel's tab.

Step 6



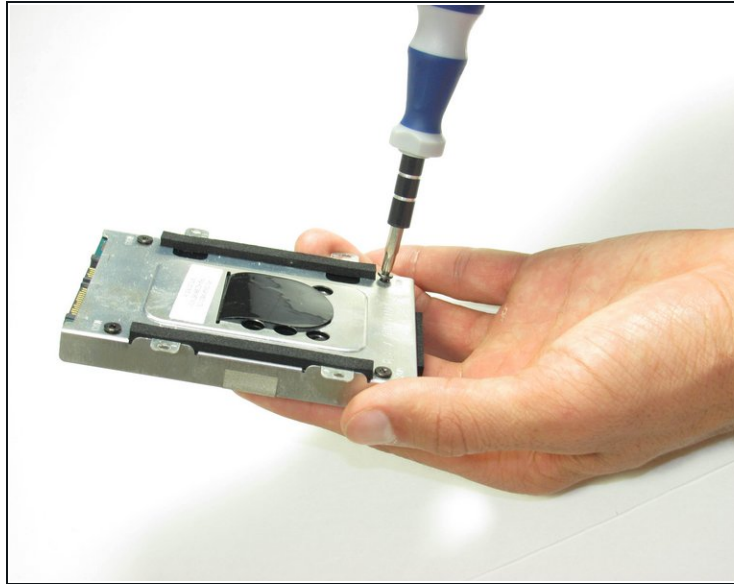
- Remove the screws attaching the hard drive and bracket.
 - Four 4.6 mm Phillips screws.

Step 7



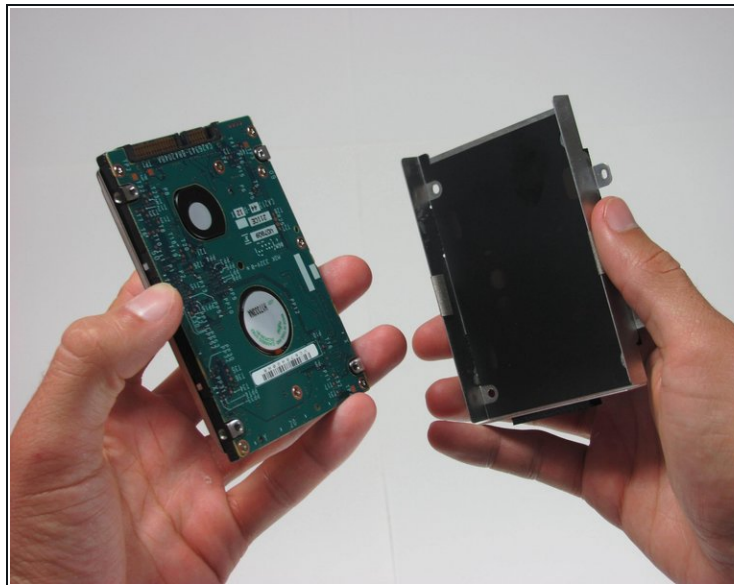
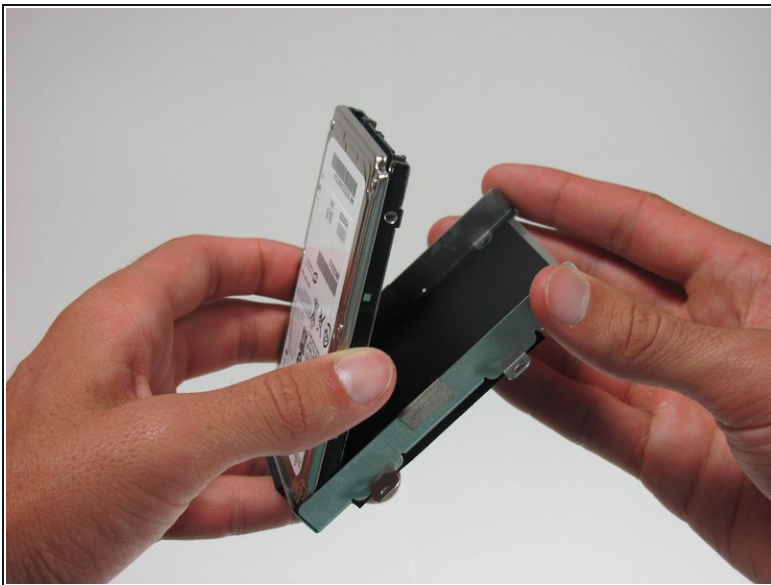
- Lift up the black tab to expose hard drive.
- Grab the hard drive bracket and pull to remove.

Step 8



- Remove the screws attaching the hard drive to hard drive bracket.
 - Four 3.6 mm Phillips screws.

Step 9



- Separate the hard drive from hard drive bracket to complete removal.

To reassemble your device, follow these instructions in reverse order.

