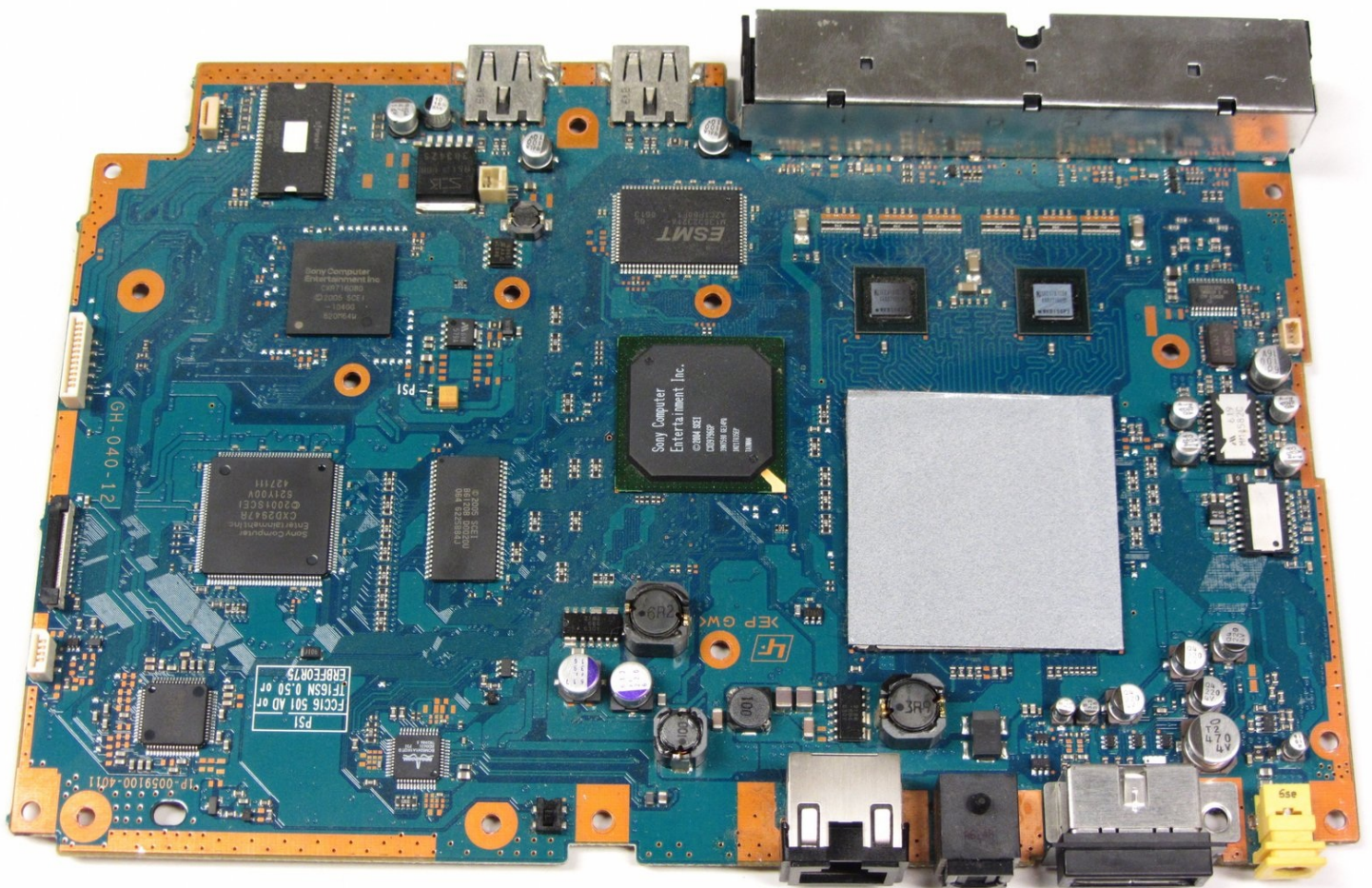




PlayStation 2 Slimline SCPH-7500x Motherboard Replacement

This guide will walk you through step-by-step...

Written By: Jared Hirata



INTRODUCTION

This guide will walk you through step-by-step on how to properly remove and install the motherboard in the PlayStation 2 Slimline.

TOOLS:

[Phillips #1 Screwdriver](#) (1)

[Spudger or Flathead Screwdriver](#) (1)

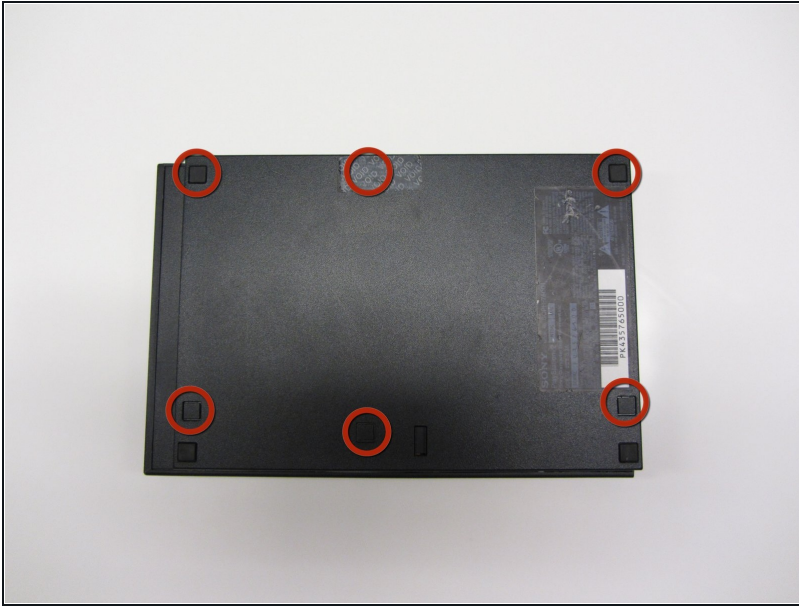
[Tweezers](#) (1)

Step 1 — Removing Playstation 2 Slimline SCPH-7500x Outer Shell



- Turn off the PlayStation 2 and carefully unplug it from the power source. Also, it is important to eject the CD from the console before flipping the it upside down.

Step 2



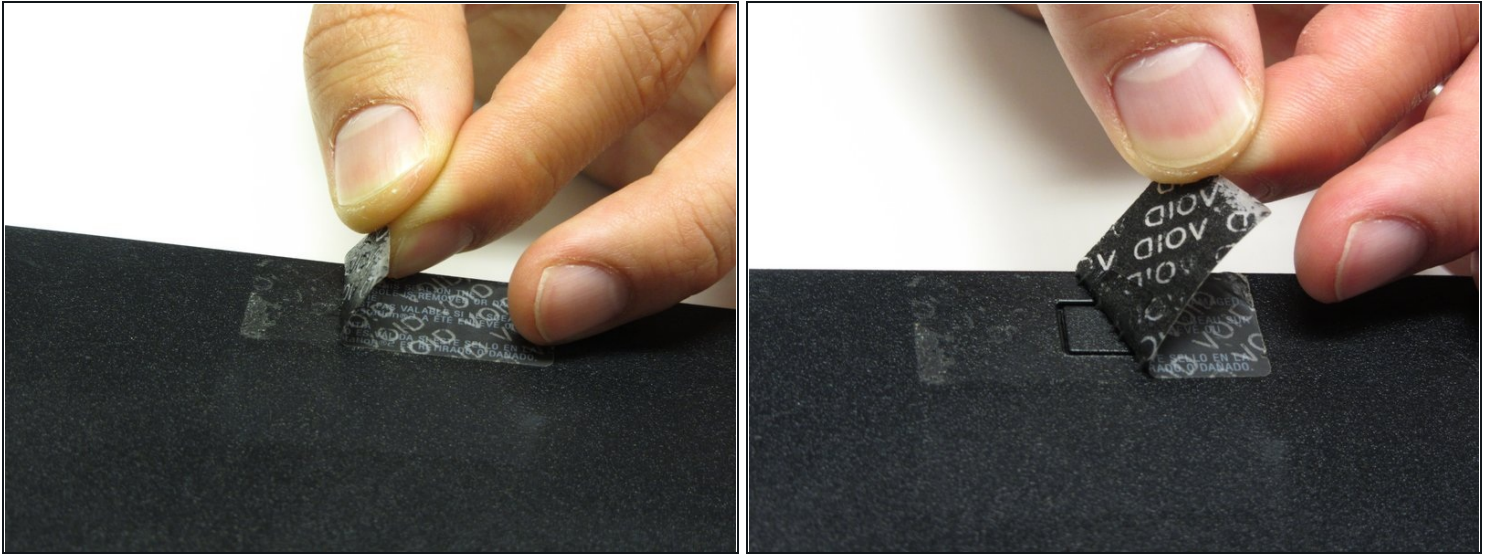
- Locate the six feet on the bottom of the PS2.
- ① Five of these feet are in plain sight while the last foot is located under the black void sticker on the back of the device.
- ① Some versions of the console, such as the PAL Version, may not have this sticker. In this case, the foot or the screw should be in plain sight.

Step 3



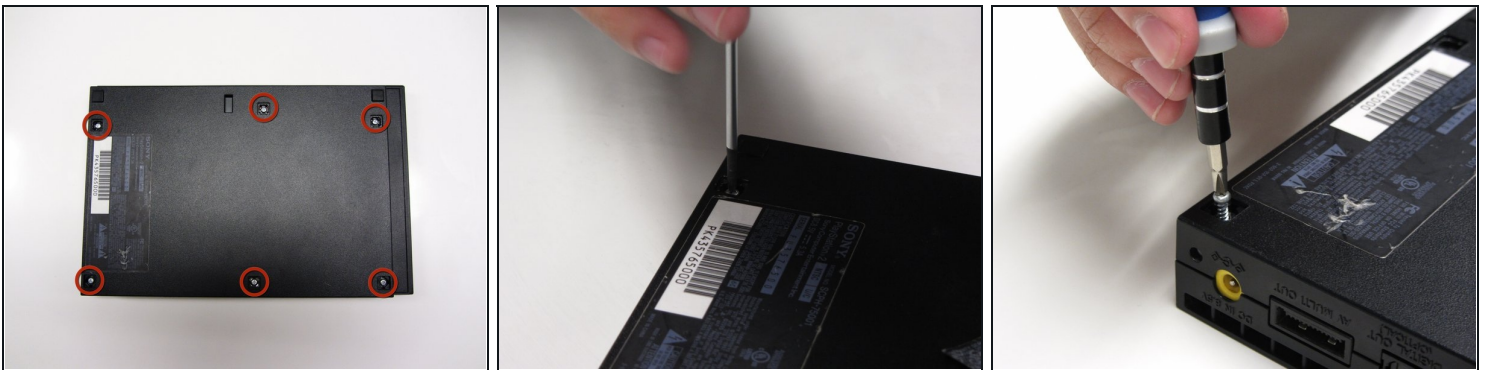
- Remove the five visible feet from the bottom of the device using a spudger.

Step 4



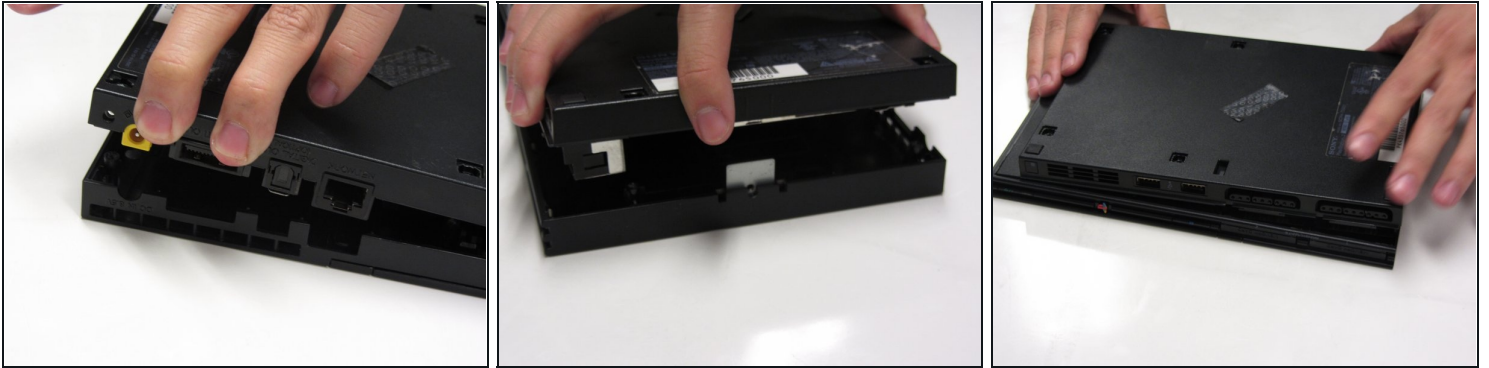
- Remove the sticker and then remove the 6th foot.

Step 5



- After all of the feet have been removed, Use a Phillips #1 screwdriver to remove the six 4.0mm screws from the base of the PS2.

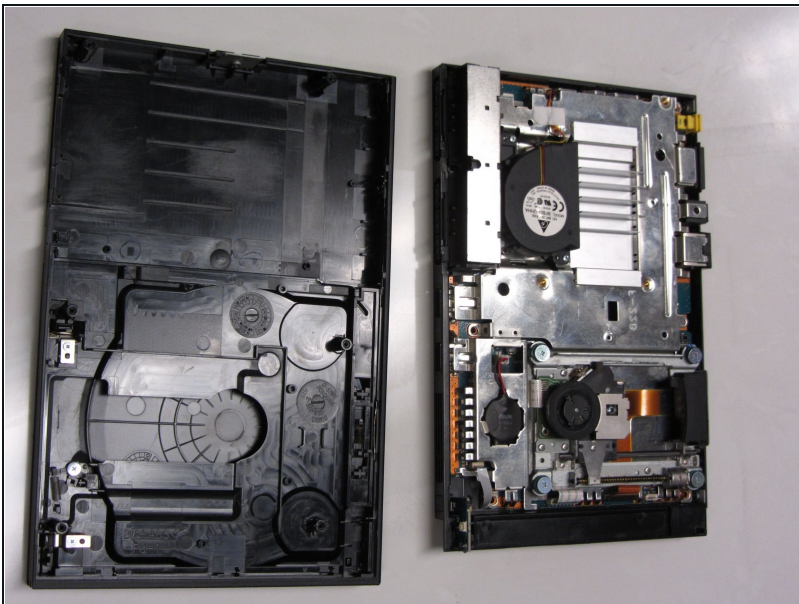
Step 6



- Once all of the screws have been removed, pry apart the plastic covers. Start by lifting the side containing the power cable and Ethernet port. Then, lift the opposite side to fully separate the two sides.

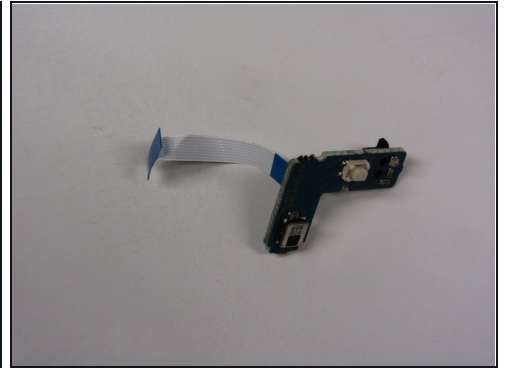
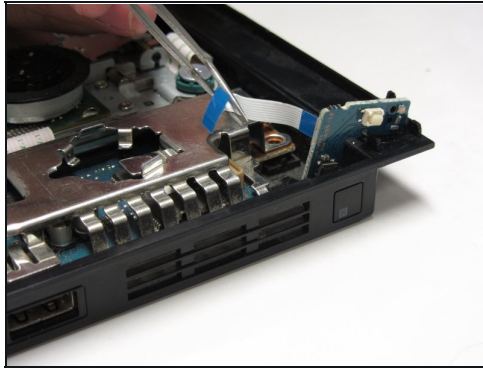
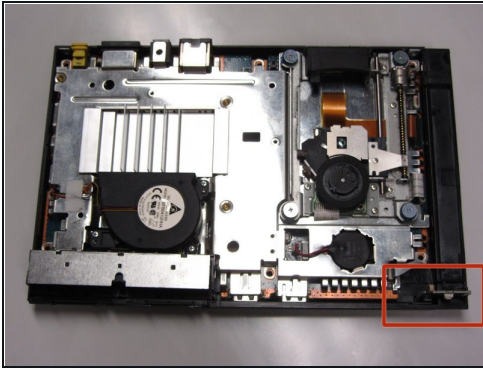
⚠ You may need to apply some gentle force to detach the covers. Be careful not to break the plastic screw pins.

Step 7



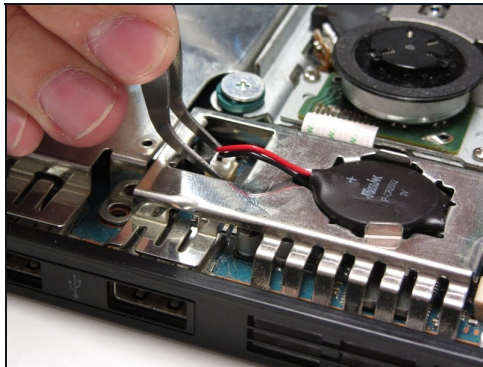
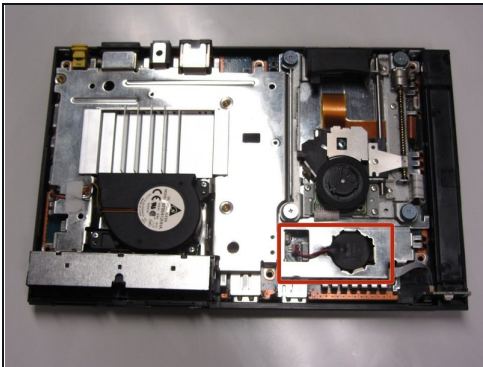
- If done correctly, you should have a fully detached plastic backing, revealing the electronic components of the PlayStation 2.

Step 8 — IR Sensor



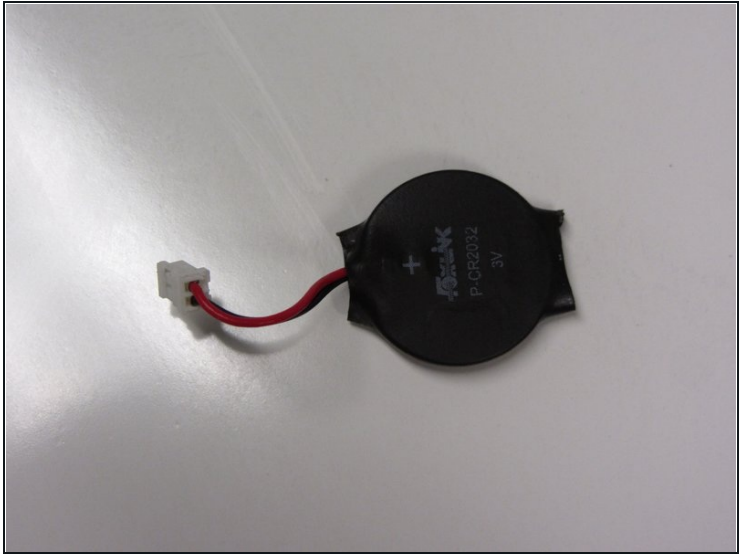
- Locate the IR sensor on the motherboard. Then, use tweezers to gently detach the blue/white ribbon that attaches the IR sensor to the motherboard.

Step 9 — Clock Battery



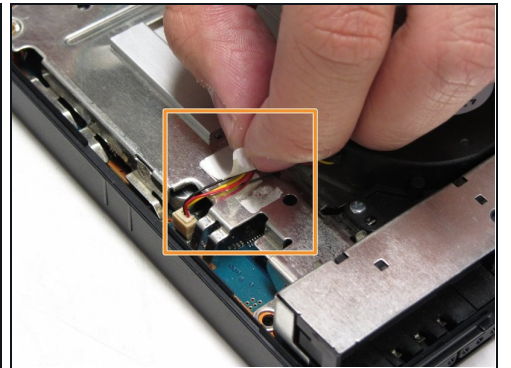
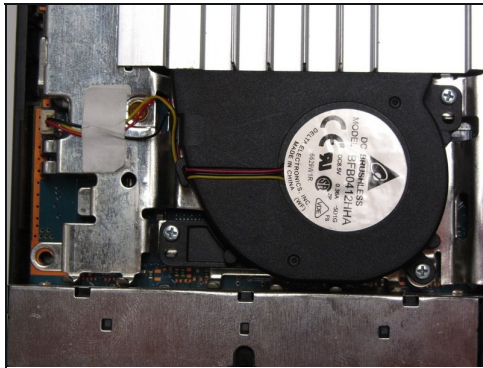
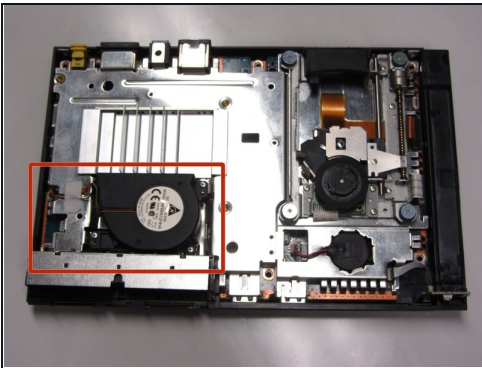
- Identify the clock battery, then use tweezers to disconnect the connector from the motherboard.

Step 10



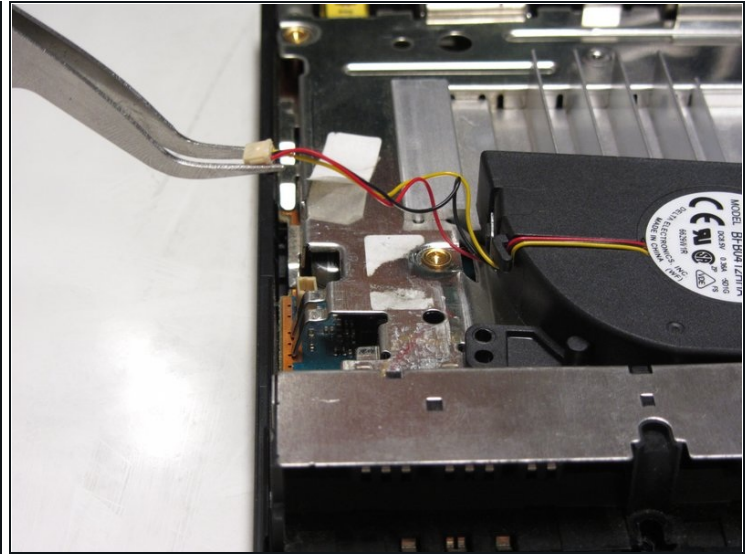
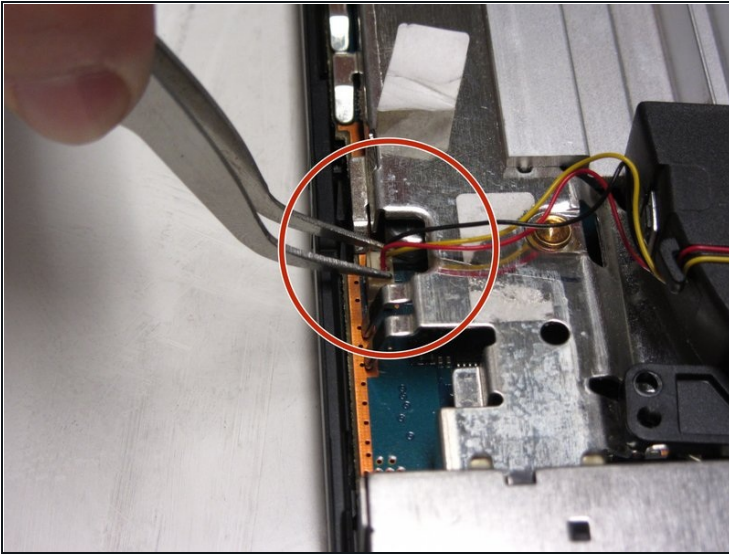
- Gently lift the battery up from the battery compartment using a spudger.

Step 11 — Fan



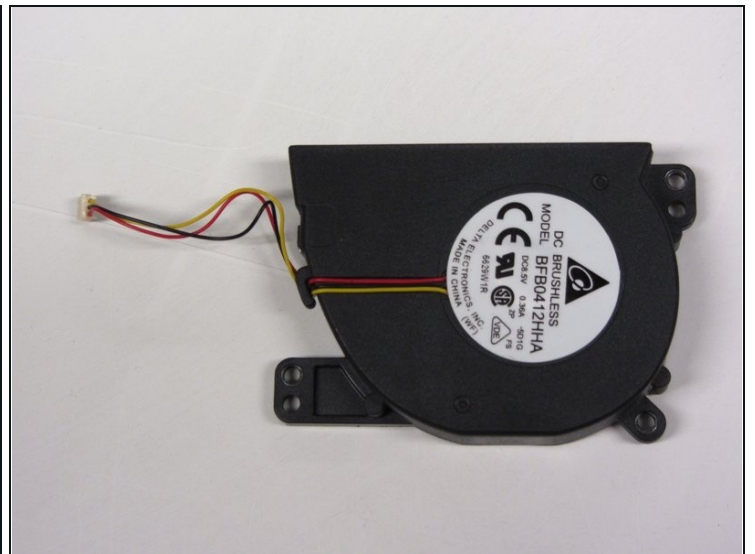
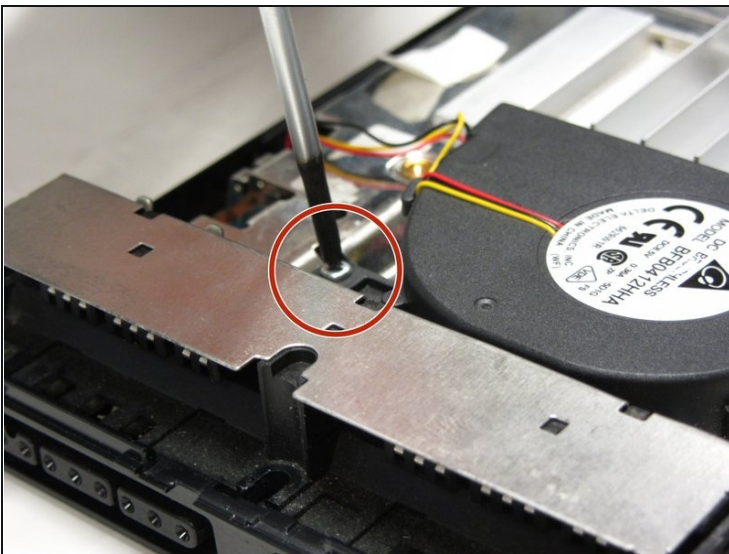
- Locate the fan component of the motherboard of the PS2.
- With your fingers or tweezers, peel off the sticker that holds down the fan's wiring.

Step 12



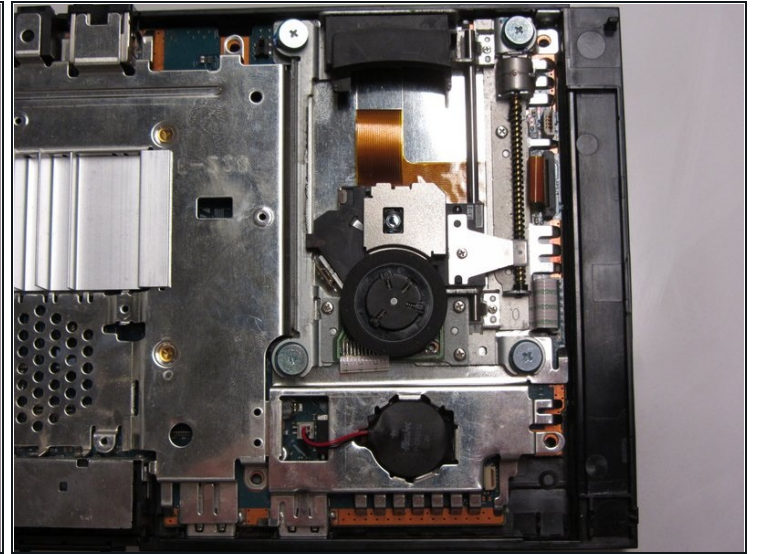
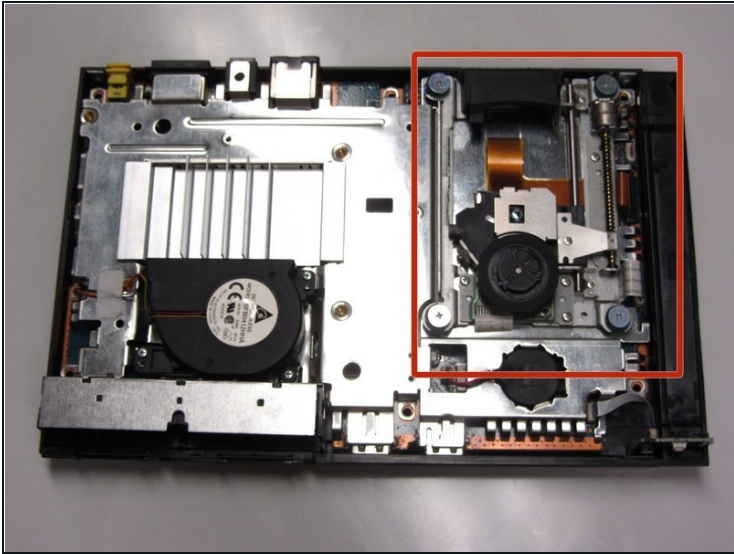
- Detach the terminal (white covering) to the red and yellow cords from the motherboard to the fan with the use of tweezers.

Step 13



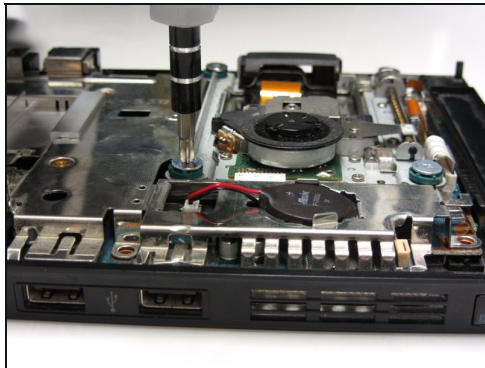
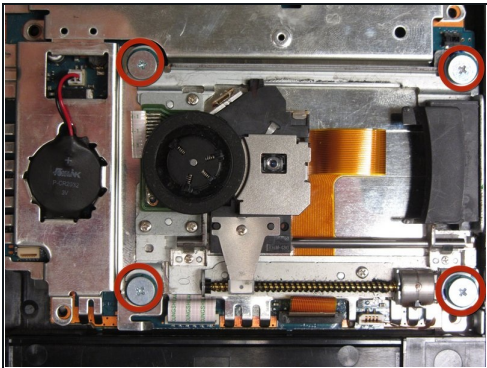
- Locate and unscrew the three 1.6mm screws located next to the base of the fan.
- ① They are located off the curved edge of the fan.
- Once you have removed the three screws, you are able to remove the fan from the PS2.

Step 14 — Optical Drive



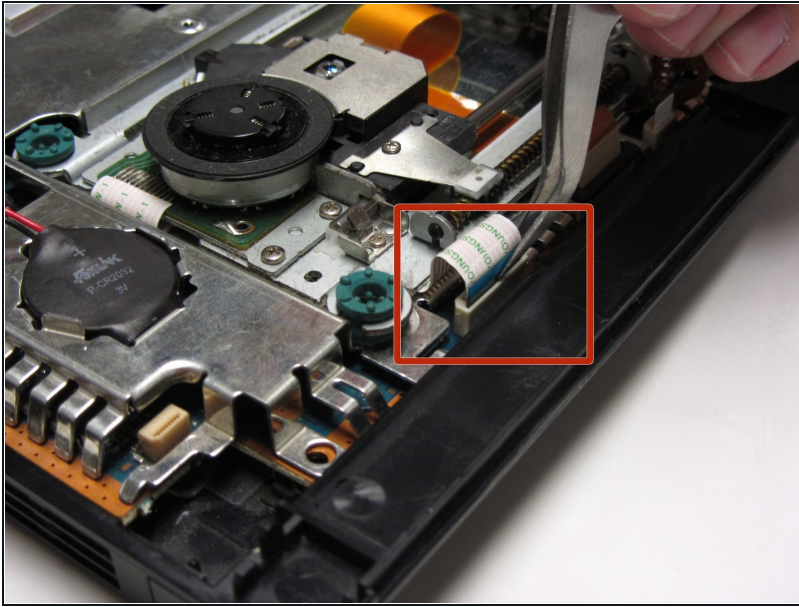
- Locate the optical drive on the motherboard.

Step 15



- Unscrew the four 4.0mm screws that mount the optical drive to the motherboard.

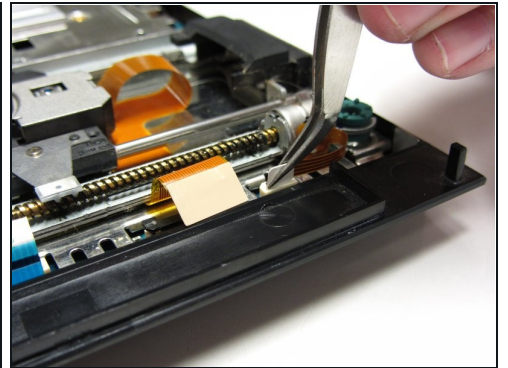
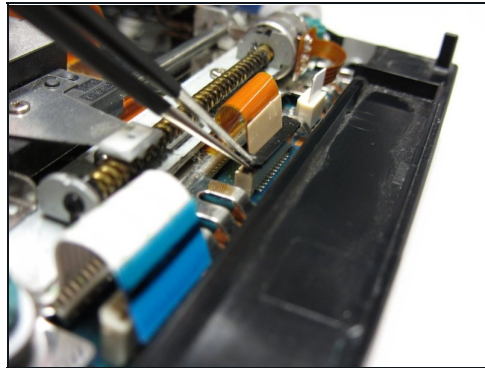
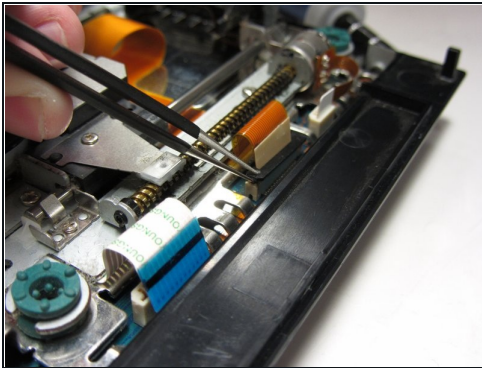
Step 16



- Locate the three ribbons that are attached to the motherboard.

ⓘ Note: These ribbons are different sizes: one large, one medium and one small sized ribbon.

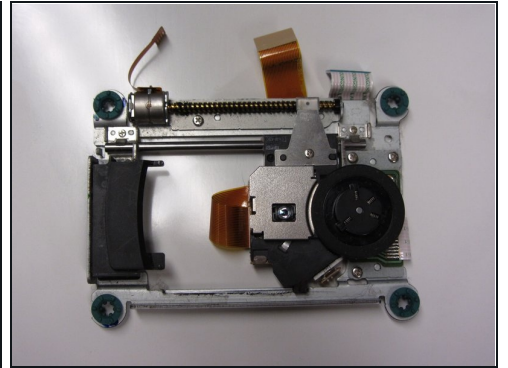
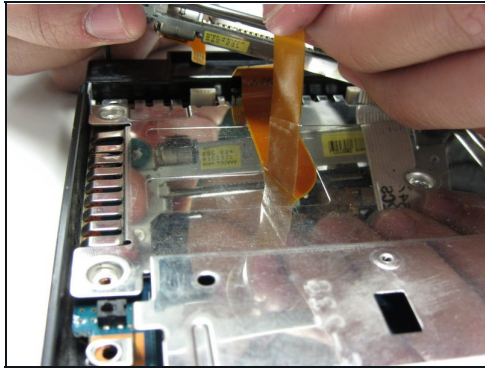
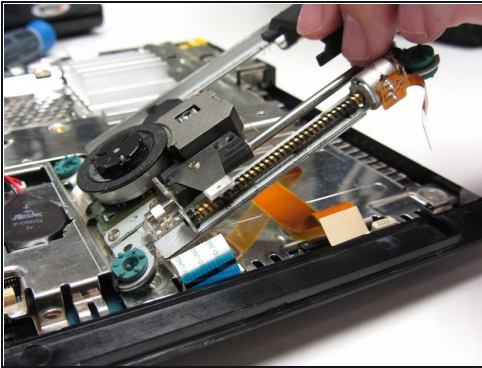
Step 17



- Using tweezers, gently detach all three ribbons from the motherboard terminal. Unlock the middle orange ribbon to lift the black tab up on either side.

⚠ **IMPORTANT:** The orange ribbon is glued to the metal chassis. Gently pull the ribbon upward to make sure that you don't rip it.

Step 18



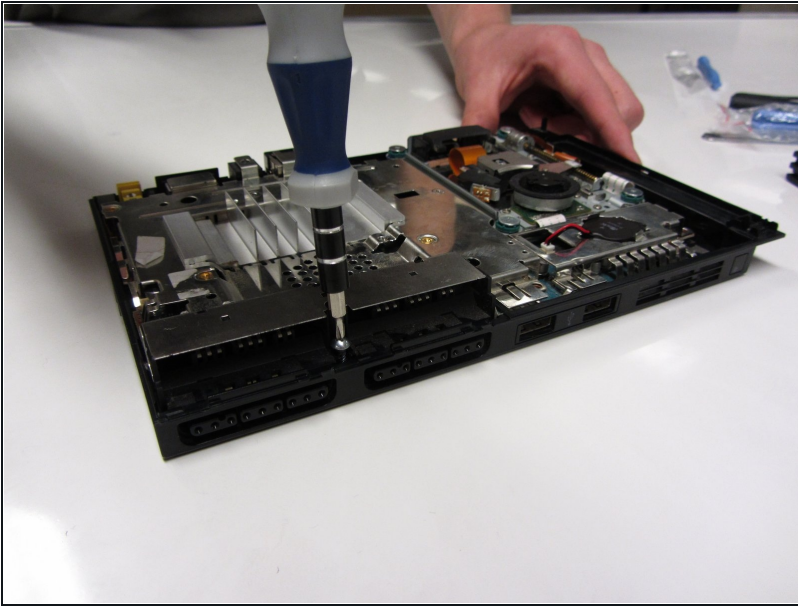
- Gently lift the optical drive away from the motherboard.

Step 19 — Motherboard



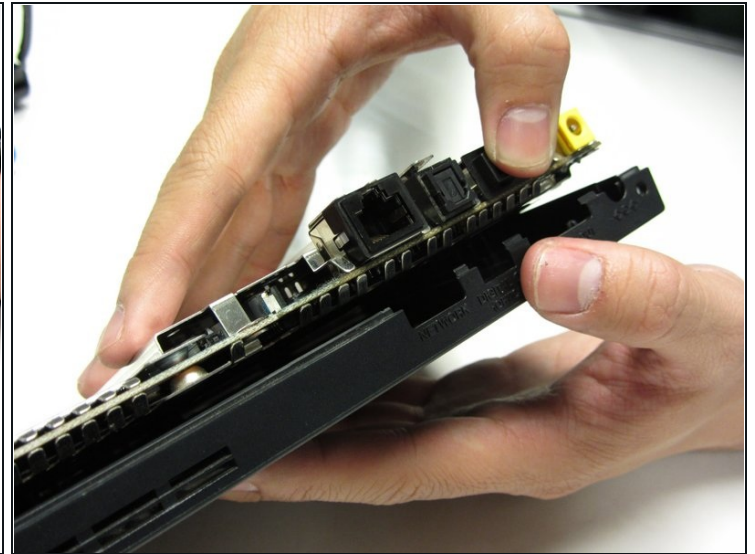
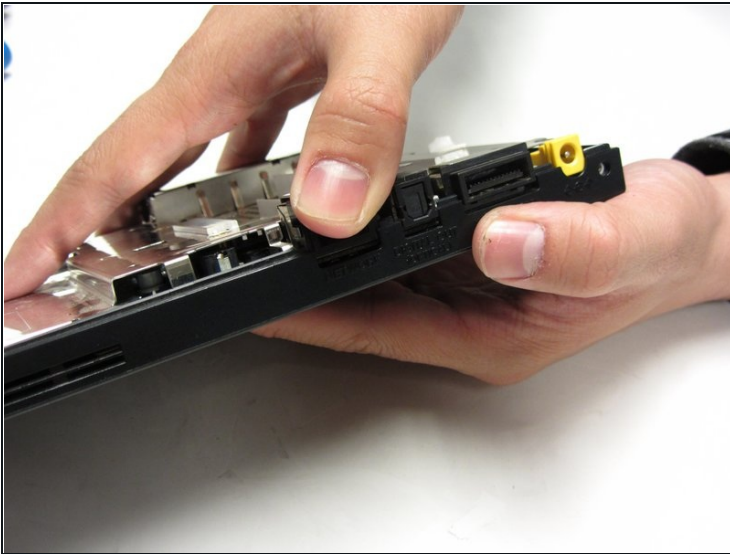
- What you see in this picture is the electronic components found in the PS2. We are now going to remove the top metal casing found on top of the motherboard.

Step 20



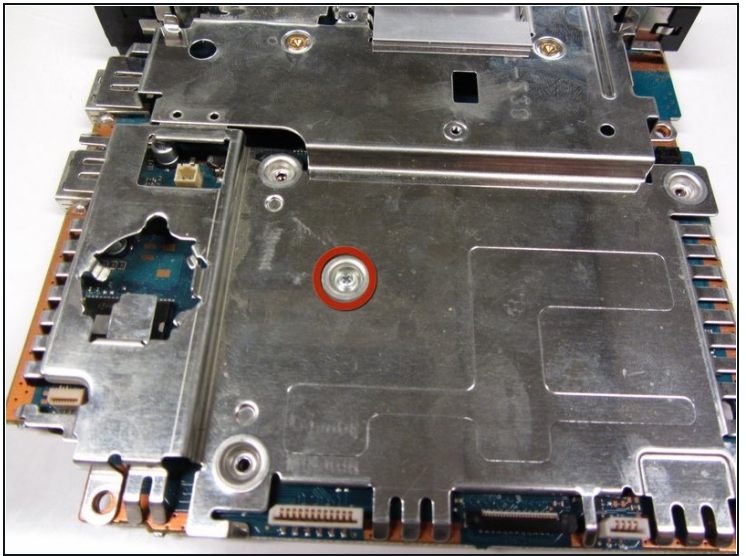
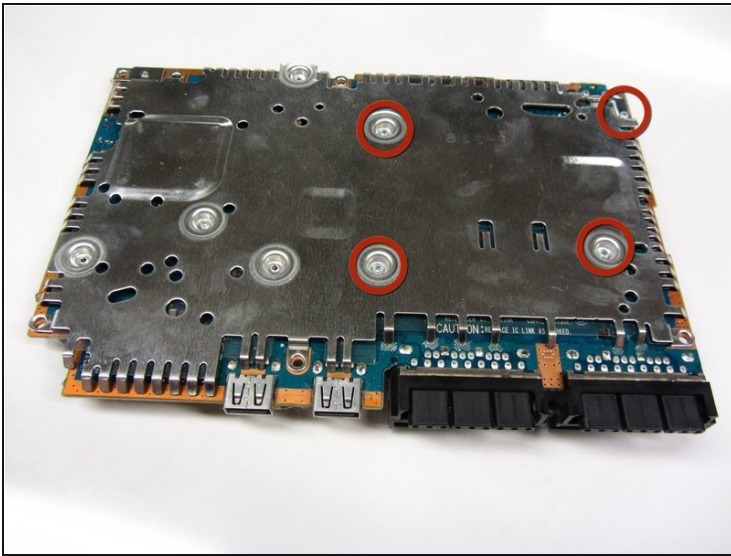
- Locate the one 2.4mm screw that mounts the metal casing to the top of the motherboard and unscrew the screw with a Philips Screwdriver.

Step 21



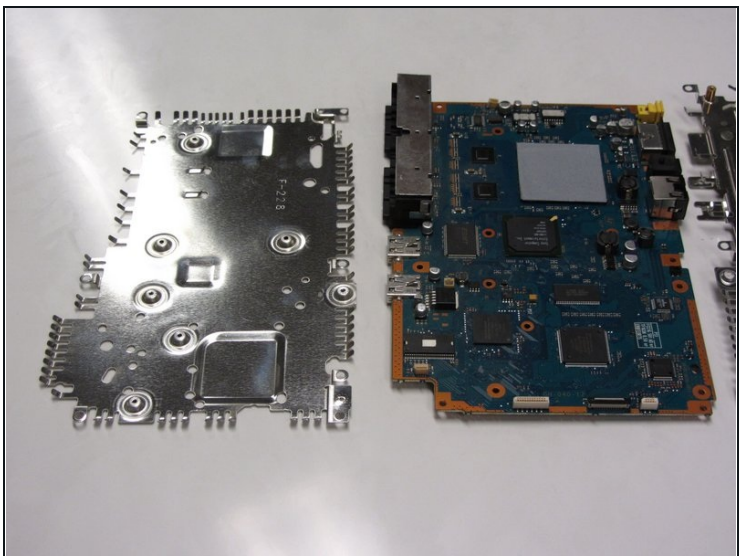
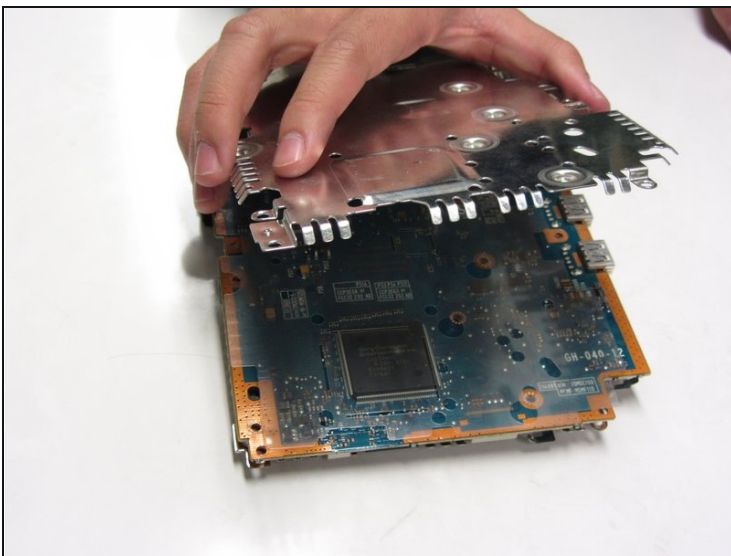
- Gently lift the metal casing from the motherboard.
 - Then lift the motherboard from the plastic outer shell.
- ① You should have three separate components: The metal casing, the motherboard and the top half of the outer shell of the PS2.

Step 22



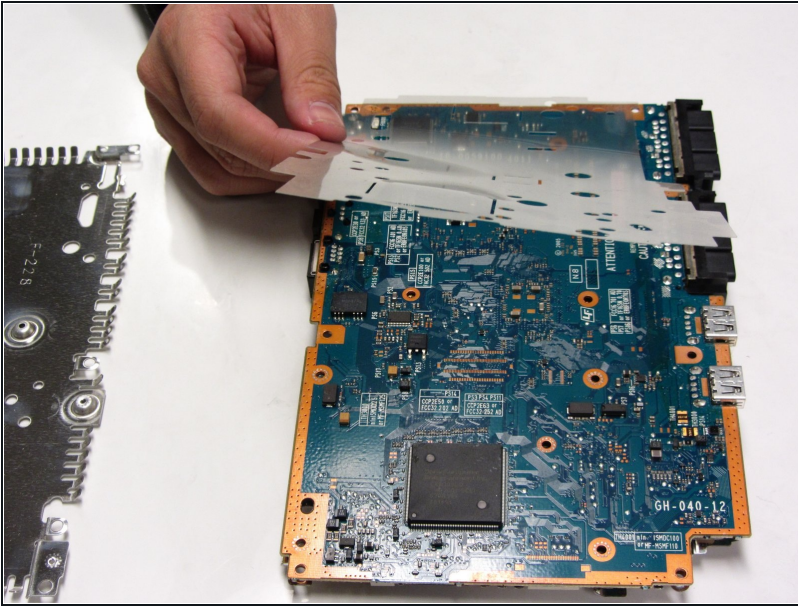
- Flip the motherboard over.
 - Locate and unscrew all five 1.6mm screws that mount the metal plate to the motherboard.
- ⓘ Note that there are four on one side and one on the other.

Step 23



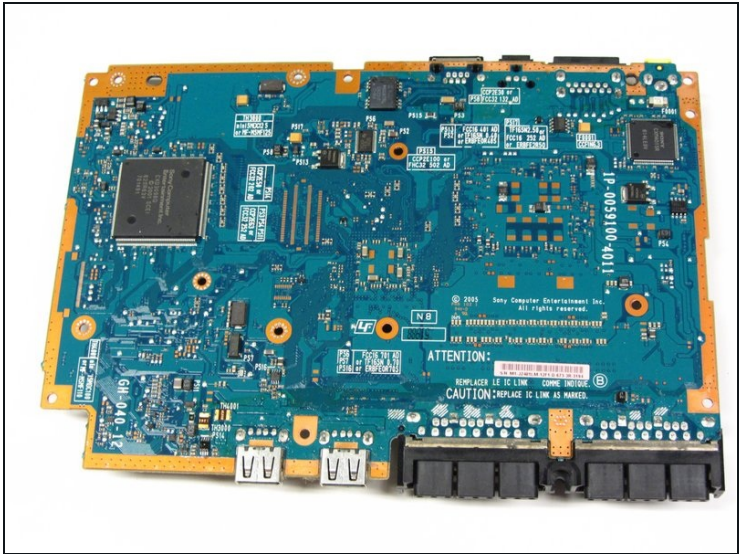
- Gently lift the metal plates from the top and the bottom of the motherboard.

Step 24



- Remove the plastic film that is sandwiched in between the metal plate and the motherboard.

Step 25



- After you have detached all the other components, it should look like the image shown.

To reassemble your device, follow these instructions in reverse order.