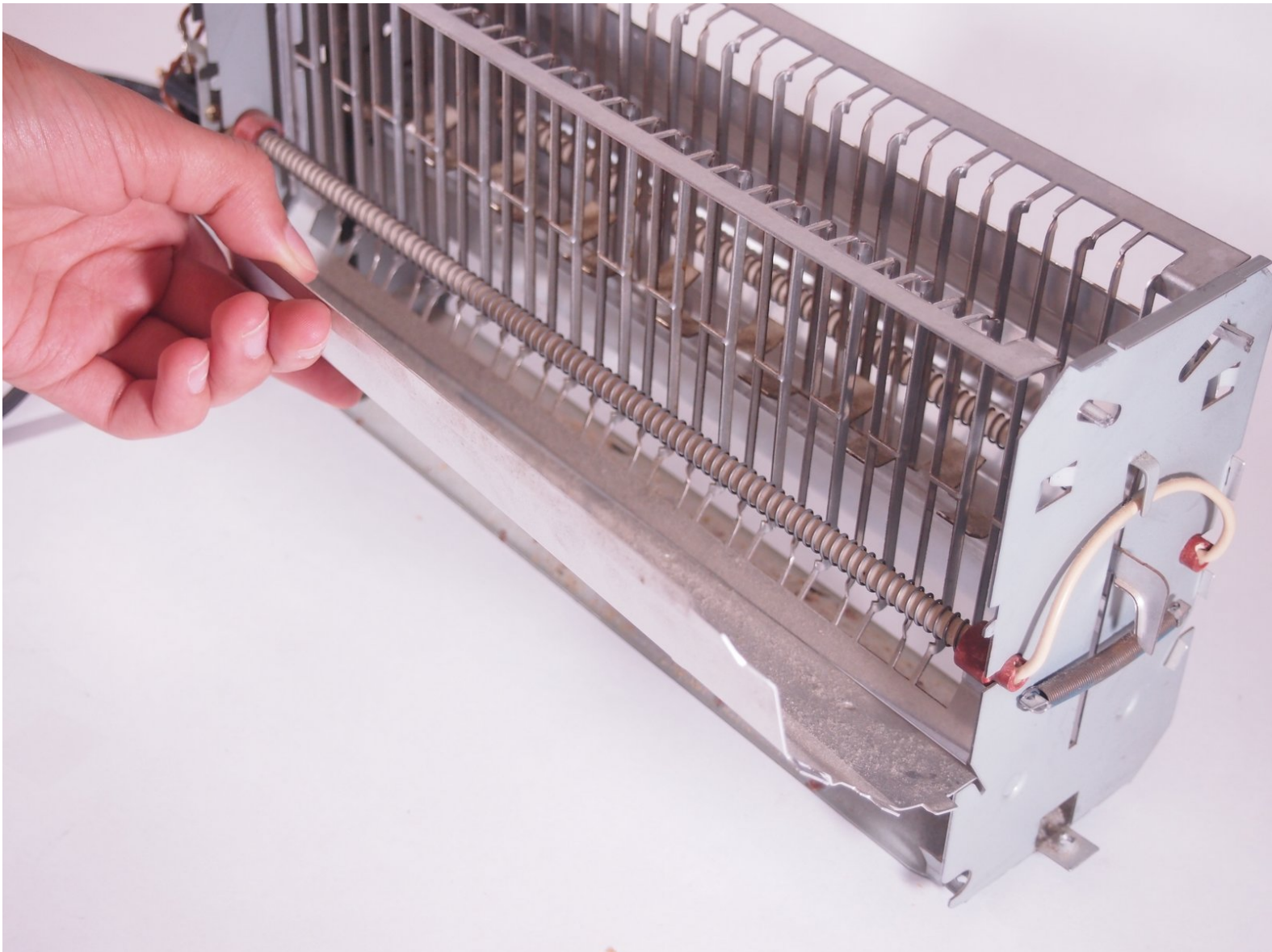




# Tefal Thick N Thin Toaster 815032 Inner Heating Panels Replacement

How to replace the Tefal Thick N Thin Toaster 815032 inner heating panels.

Written By: Kristen Gismondi

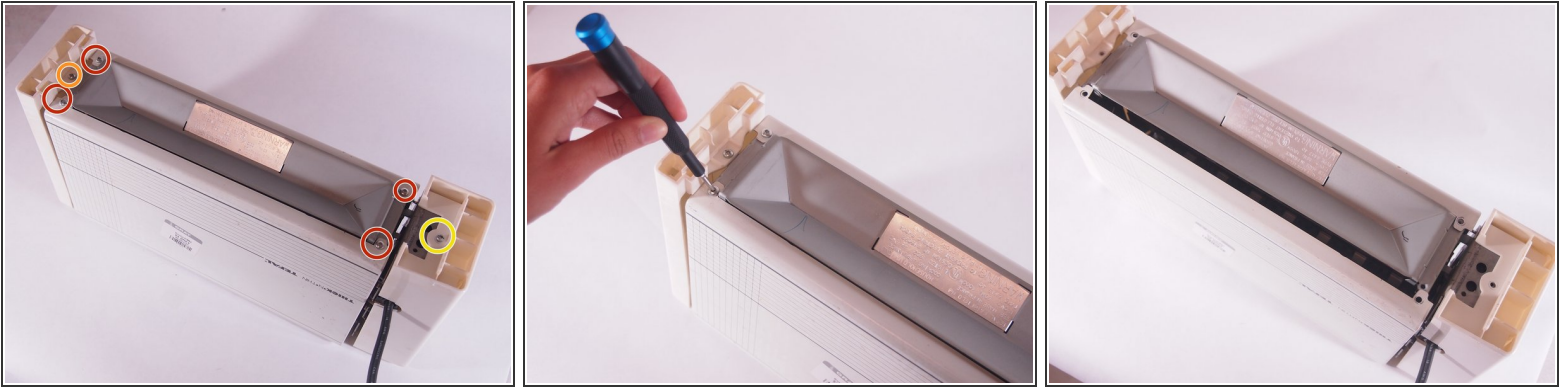




## TOOLS:

- [TR9 Torx Security Screwdriver](#) (1)
-

## Step 1 — Side Panels



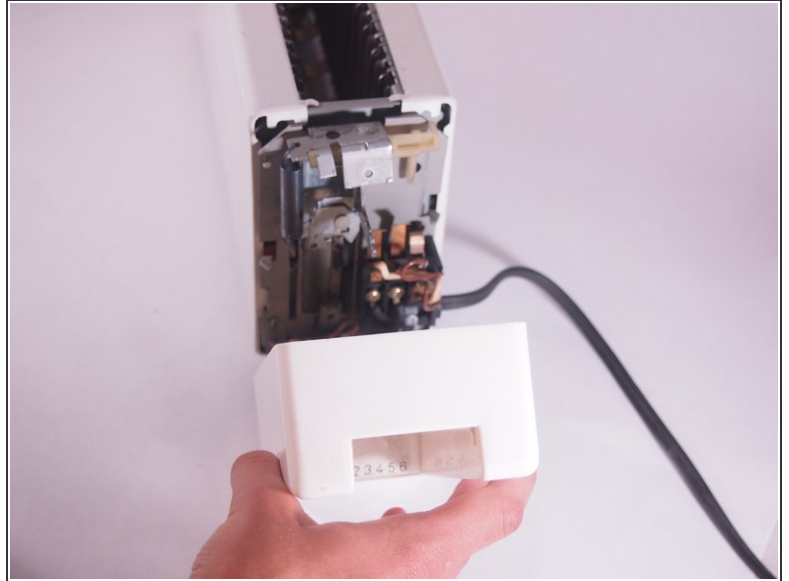
- Turn the toaster upside down.
- Remove the four 10 mm screws from the bottom of the toaster using a TR9 Torx screwdriver.
- Remove the 14 mm Torx-slot combination screw on the opposite side of the toaster's lever with a TR9 Torx screwdriver.
- Remove the 11 mm Torx-slot combination screw near the toaster's lever with a TR9 Torx screwdriver.

## Step 2



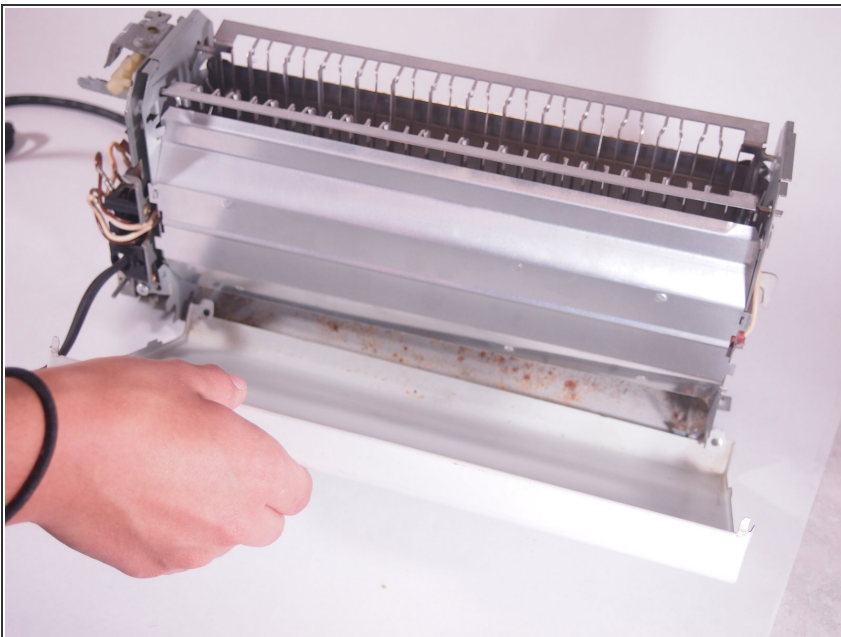
- Remove the side of the toaster that does not have the lever.
- ⓘ The side will just pop off, as you have removed the screw holding it in place.

### Step 3



- Remove the 10 mm screw from the top of the remaining side of the toaster using a TR9 Torx screwdriver.
- ⓘ This side will pop off as well once you have removed the screw.
- The toaster's lever and heating slide will fall off with a simple pull.

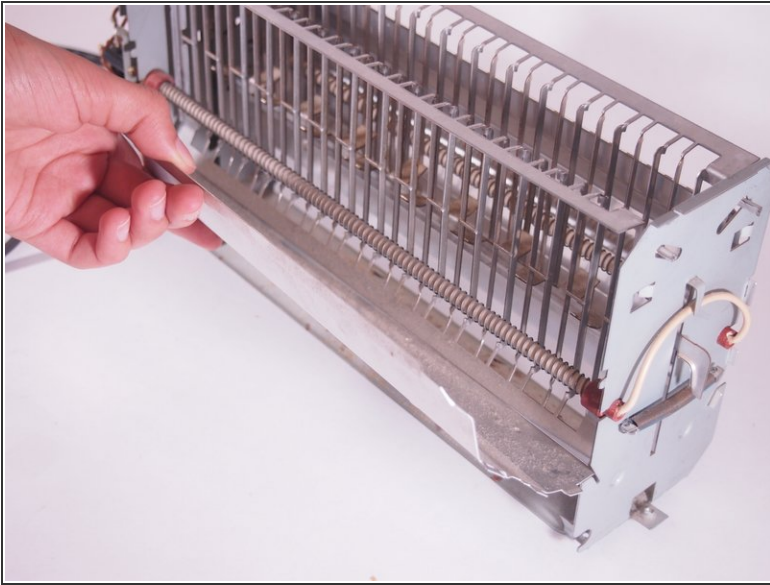
### Step 4 — Front and Back Panels



- Use an opening tool to pry back the metal tabs on the left and right corners of the toaster's front and back metal panels.
- Pull off the front and back panels of the toaster.



## Step 5 — Inner Heating Panels



- Pry back the metal tabs on the corners of the front and back inner heating panels using an opening tool.
- Remove both the front and back inner heating panels of the toaster.

To reassemble your device, follow these instructions in reverse order.