



# Repair Guide for the LG Net10

This guide will describe in steps how to disassemble and reassemble the LG net10.

Written By: Gina



---

## INTRODUCTION

Once the phone is disassembled, you can access the motherboard, replace the screen, or keyboard, and/or find other faults with the phone.

---




### TOOLS:

- [Phillips #00 Screwdriver](#) (1)
  - [iFixit Opening Tools](#) (1)
-

## Step 1 — Complete disassembling of the phone to get to the motherboard



 Frontal view and rear view of the LG Net10 prior to disassembling.

## Step 2



- Remove battery back cover by applying pressure along the groove. The LG logo should be up right. Apply the pressure downwards to remove the cover.

## Step 3



- Remove the battery from the top of the battery.

## Step 4



- Remove the SIM card, by pushing down on the top of the SIM card and sliding it out from under the metal band.

## Step 5



- Remove all four screws from the back of the phone by using a small Phillips head screwdriver and turning it counterclockwise.
- The screws are 0.5 centimeters.

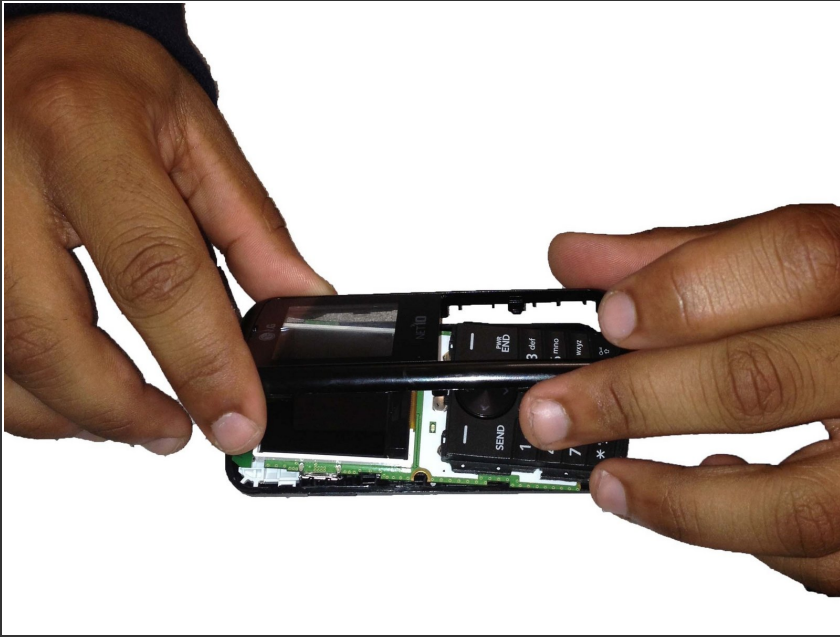
## Step 6



- Use a wedge, or flat edged tool to separate the phone. Make sure to circle around the entire phone, especially the corners to pull it apart. This can be difficult. This may take several tries, so make sure to be persistent.



## Step 7



- Separate and remove the two hard covers and the keypad.

## Step 8



- Then remove the motherboard from the hard back of the phone.

## Step 9



- Once the phone is completely disassembled, you can replace the screen if it is cracked. You can also replace the keypad if the buttons do not work or if there are other issues with the keypad. Another common desire people have is to unlock the phone. In order to do this, you must replace the SIM card, which is explained in the steps above.

To reassemble your device, follow these instructions in reverse order.