



# Samsung Galaxy M51 SIM Tray Removal

How to eject the dual tray to remove the SIM card and/or microSD card in the Samsung Galaxy M51.

Written By: Adriana Zwink



---

## INTRODUCTION

Use this guide to eject and remove or replace the SIM card tray in your Samsung Galaxy M51.

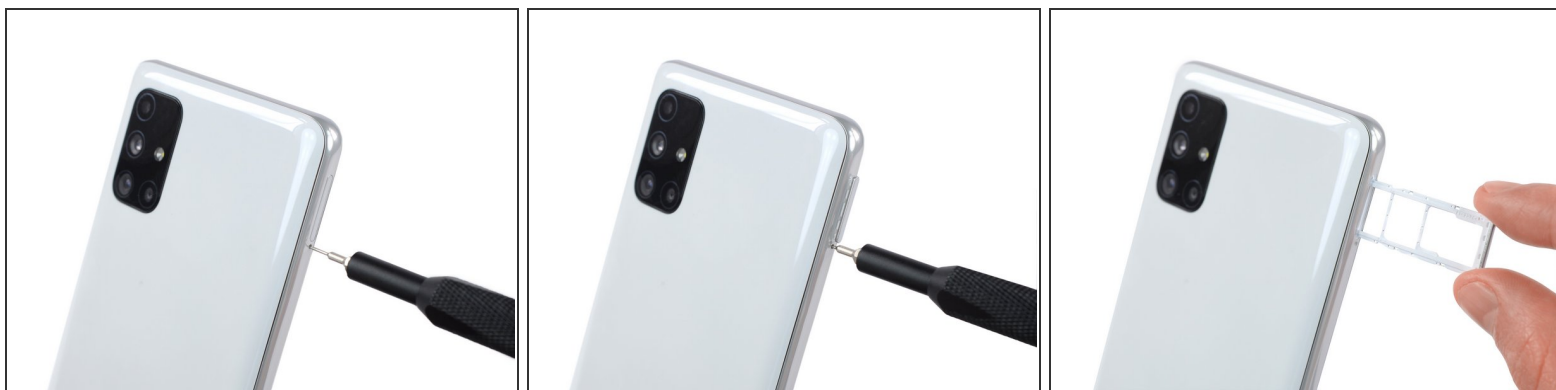
---




### TOOLS:

- [SIM Card Eject Tool](#) (1)
-

## Step 1 — How to remove the SIM Tray



- Insert a SIM eject tool into the small hole on the SIM card tray on the left edge of the phone.
- Press firmly to eject the tray.
- Remove the SIM card tray.

 When reinserting the cards, make sure to properly orient them in the tray.

To reassemble your device, follow these instructions in reverse order.