



How to Replace a Filter on Whirlpool W10407342B side-by-side refrigerator

This guide shows you how to Replace a Filter on...

Written By: Miller Ekas



INTRODUCTION

This guide shows you how to Replace a Filter on Whirlpool W10407342B side-by-side refrigerator.

Replacing your filter every six months is good both for the cleanliness of your refrigerator as well as your health.

Changing the filter is quick and easy. Make sure you buy a genuine Whirlpool water filter, as there are some DRM locks on third party filters.

TOOLS:

[Towel](#) (1)

[Cup](#) (1)

PARTS:

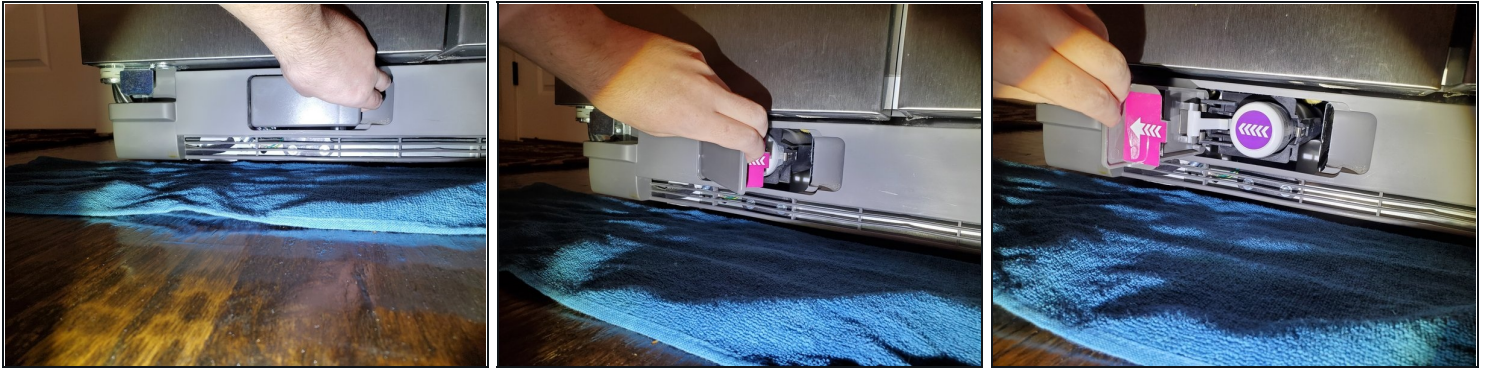
[everydrop® Refrigerator Water Filter 1](#)
- [EDR1RXD1](#) (1)

Step 1 — Water Filter



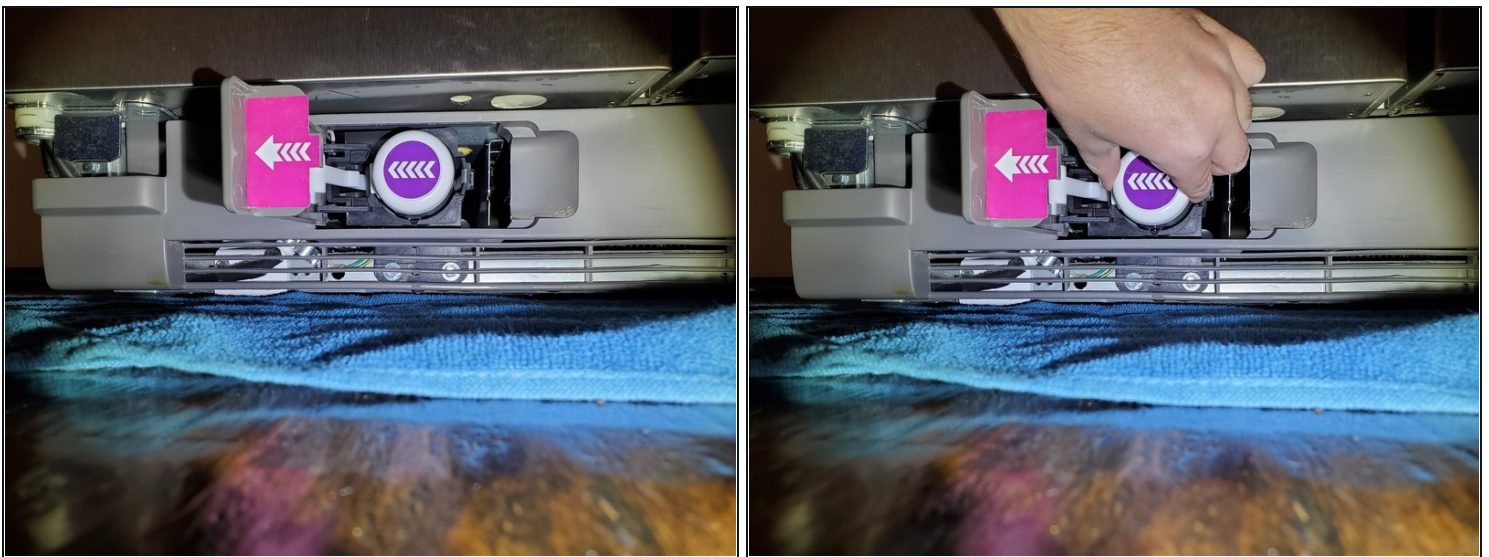
- Place a towel under the water filter cover door at the base grille.

Step 2



- Open the filter cover door.
 - ① Once the door is open, the filter will eject out.

Step 3



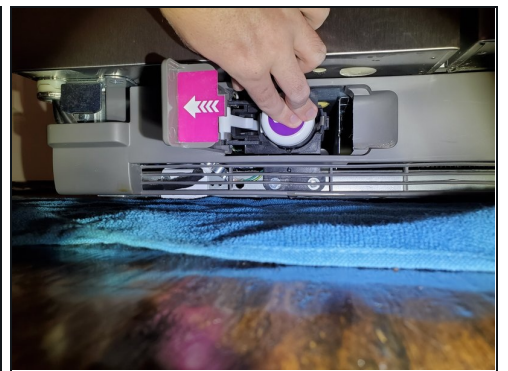
- Open the door all the way and pull the filter out straight.
 - ⚠ The filter might be wet so let it drip out on the towel a bit to avoid flinging water across your kitchen floors.

Step 4



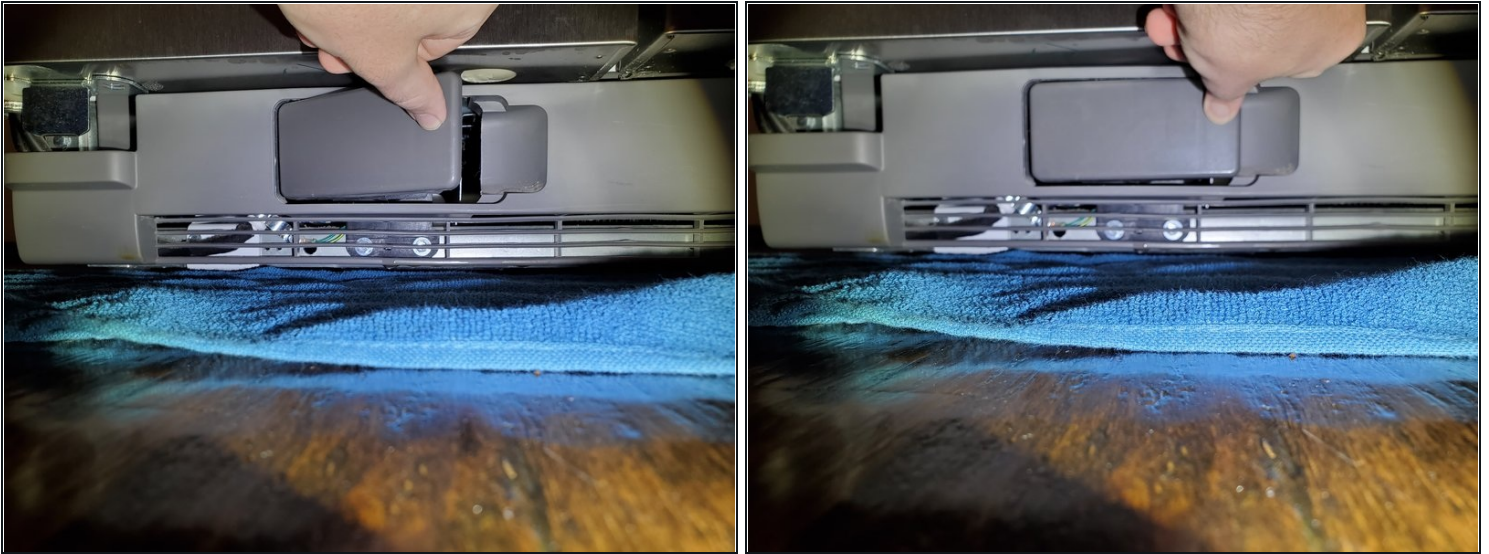
- Remove the new filter from its packaging and take the coverings off the O-rings.

Step 5



- Point the arrow on the filter toward the left and slide it into the filter hole.
① Doing so will cause the filter cover door to automatically begin closing.

Step 6



- Close the filter cover door completely.
 - ① You may need to press hard to snap the filter into the right place.

Step 7



- Push the filter indicator switch five times to reset the filter indicator to green.
- Using a sturdy container to catch the water, depress and hold the water dispenser lever for 5 seconds, then release it for 5 seconds.
- Repeat until water begins to flow.
- Once the water begins to flow, continue depressing and releasing the dispenser lever (5 seconds on and 5 seconds off) until a total of 3 gallons had been dispensed.

You have successfully replaced the water filter on your Whirlpool W10407342B side-by-side refrigerator!