



Logitech M238 dissassembly

I dropped the mouse in the sink under running...

Written By: SubjecttoGod



INTRODUCTION

I dropped the mouse in the sink under running water as I was trying to clean it of abominable filth .
Clumsy me.

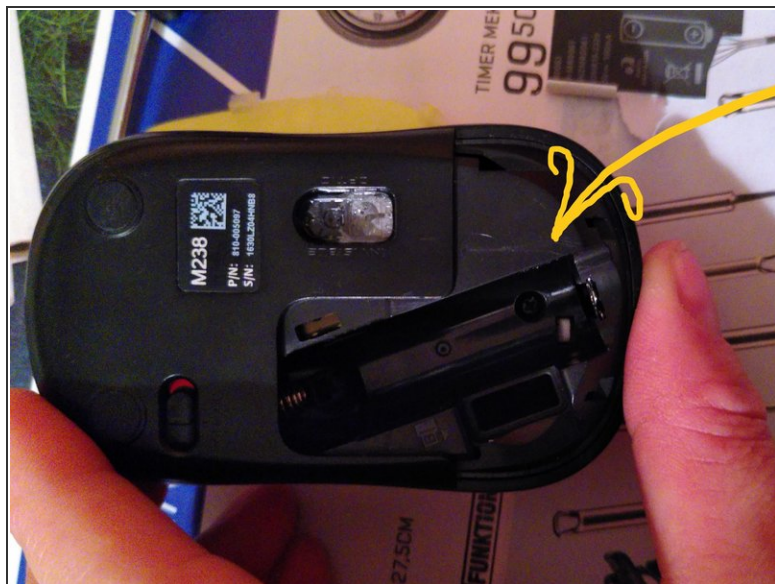
I found only a teardown of a [Logitech M235](#) and decided to make an Ifixit account and contribute to the restoration of civilization.

Step 1 — The tools I used.



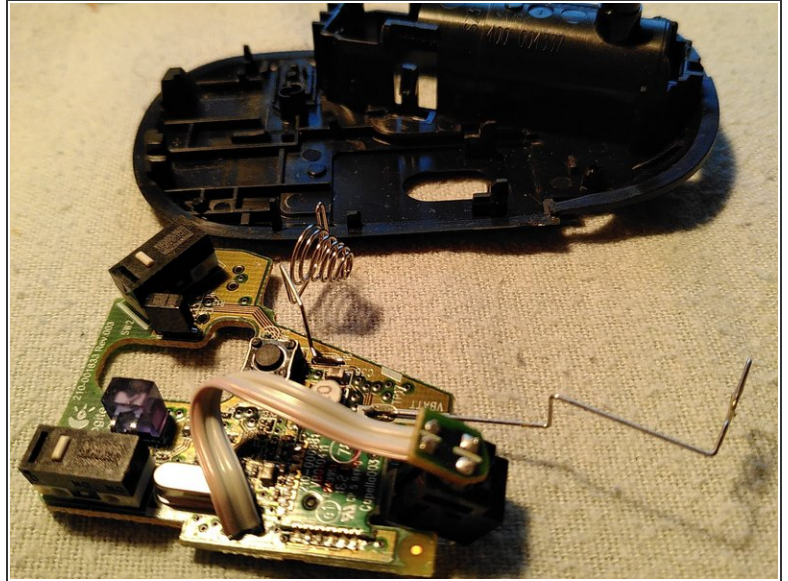
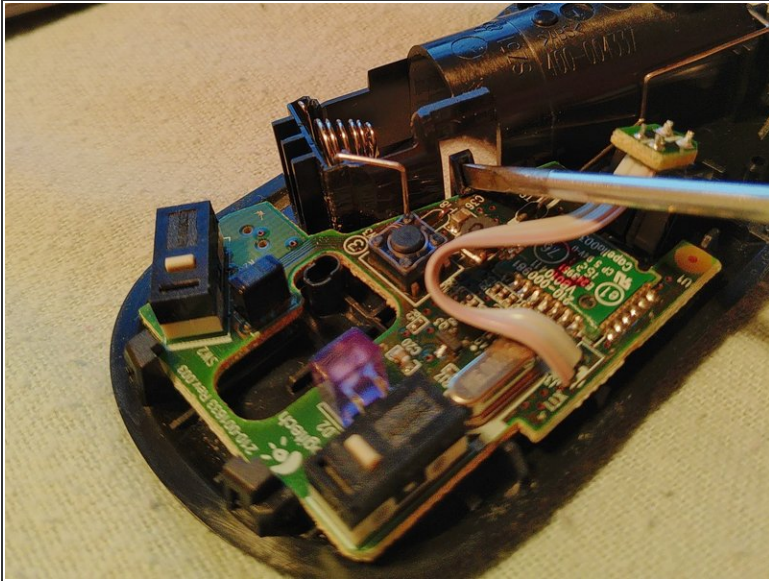
- Sharp object, cross and flat screwdriver

Step 2 — Find and unscrew the screw



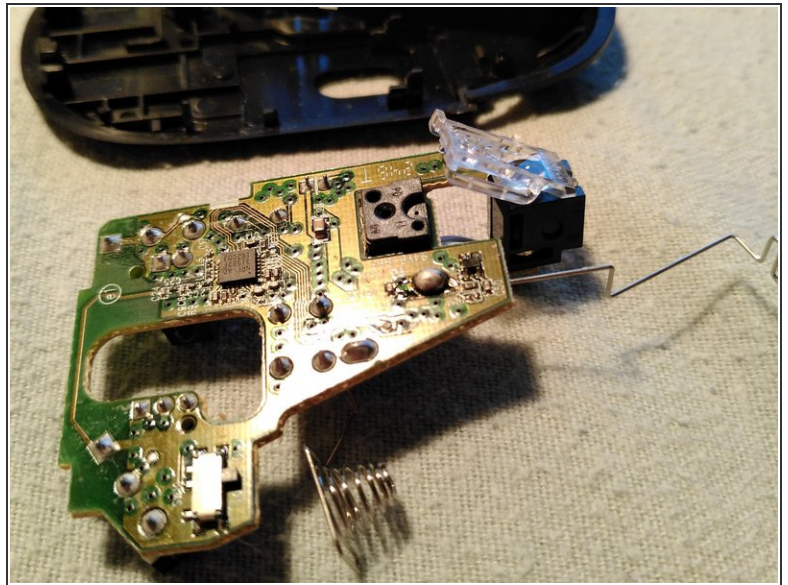
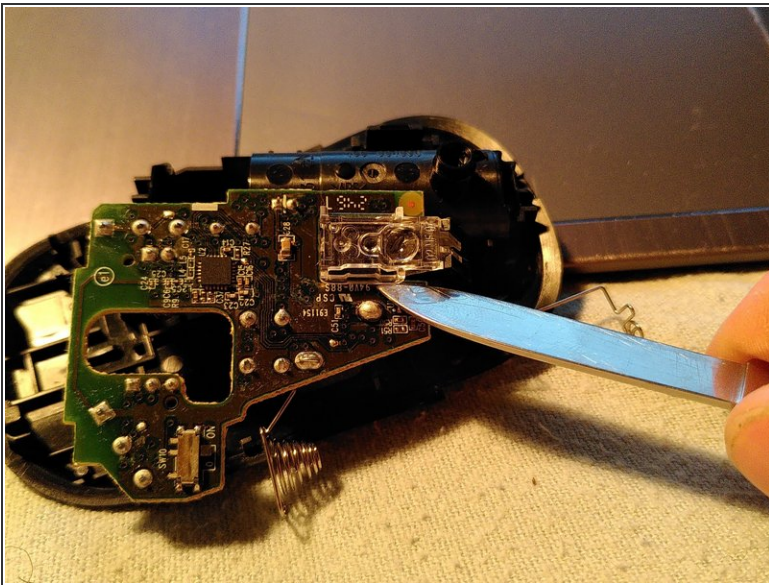
- The screw is located under the sticker.

Step 3 — Release the circuitboard



- Press the clip to release the circuitboard.
- Take care to not damage the battery connector leads.

Step 4 — Dissambling the opticalassembly



- Be careful!

To reassemble your device, follow these instructions in reverse order.