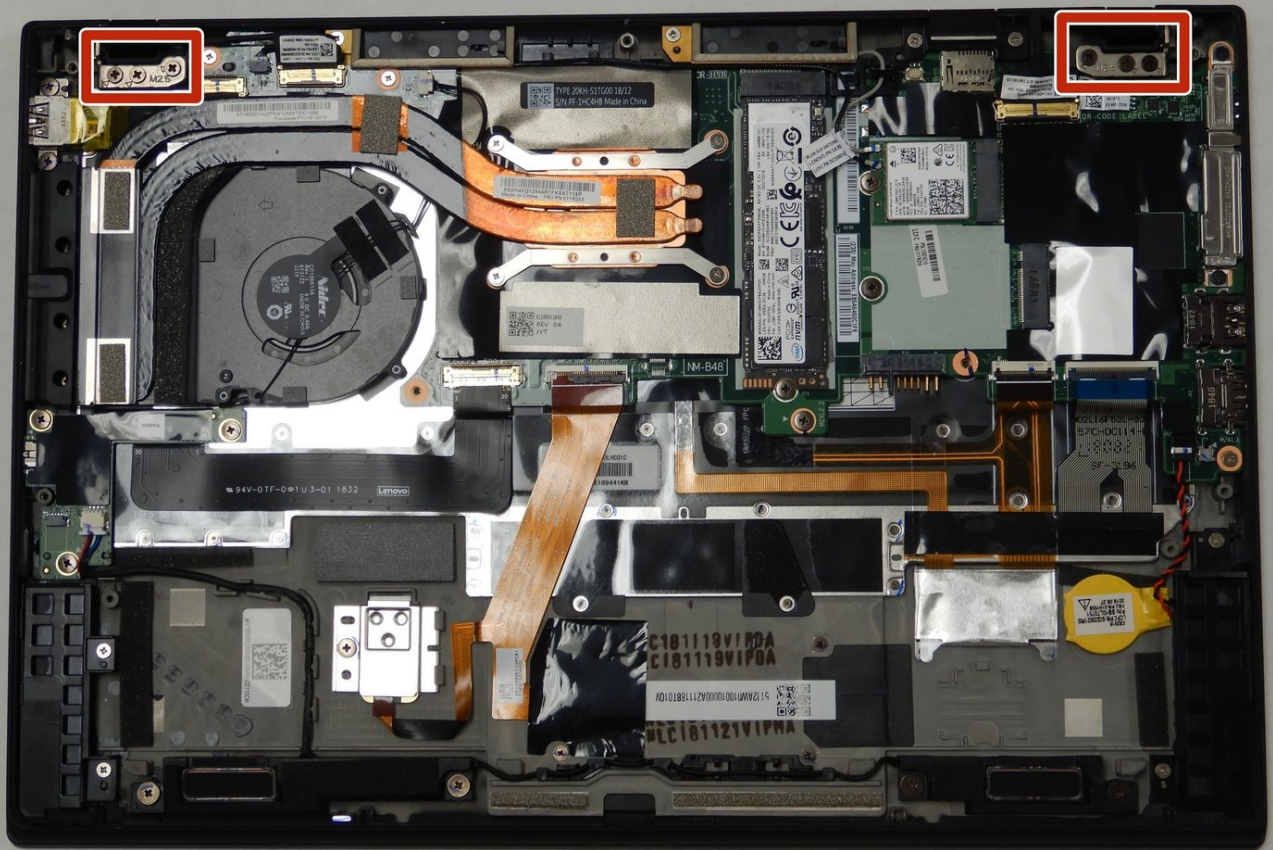




Lenovo ThinkPad X1 Carbon 6th Gen Display Replacement

Before using this guide, refer to the...

Written By: Dylan McDowell



INTRODUCTION

Before using this guide, refer to [the troubleshooting page](#) to diagnose the problem and verify if it can be fixed without having to replace the device.

Another name for the display is the screen. You would want to replace your display if it cracks or glitches in a way that prevents you from carrying out your usual tasks. Replacing a worn out or malfunctioning display would help you use your laptop better, since it enables you to view the tasks you perform.

Lenovo offers four types of displays for its ThinkPad X1 Carbon 6th Gen and this replacement guide applies to all four. The four displays include: the 14 inch FHD (1920 x 1080) IPS anti-glare 300 nits, 14 inch FHD (1920 x 1080) IPS anti-glare multi-touch, 300 nits, 14 inch WQHD (2560 x 1440) IPS anti-glare 300 nits, and 14 inch HDR WQHD (2560 x 1440) IPS glossy with Dolby Vision 500 nits. The display resolutions are found in the parenthesis.

If you follow the guide closely, you should be able to replace your display without any complications. Be sure to power off your laptop prior to beginning your repair and unplug it from the power source.



TOOLS:

[Phillips #0 Screwdriver](#) (1)
[iFixit Opening Tool](#) (1)



PARTS:

[00NY679 - Lenovo Laptop LCD Screen - Genuine](#) (1)

Step 1 — Back Cover



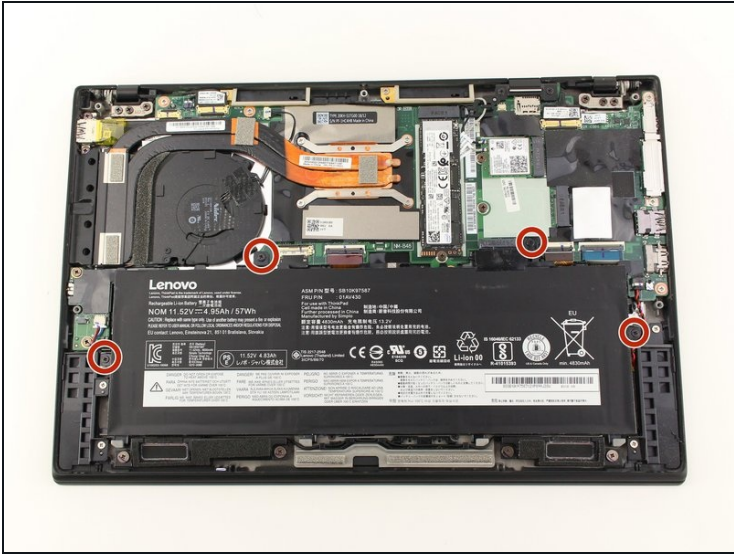
- Use a Phillips #0 screwdriver to unscrew the five screws that secure the back cover to the laptop.
- ⓘ The screws do not completely come off from the back cover. Loosen until the screws are completely loose.

Step 2



- Use a Jimmy to lift the cover directly up off of the locating pins.
- ① Though a metal opening tool is shown in the image, we recommend using plastic opening tools to minimize any cosmetic damage.
- Remove the back cover.
- ① If you encounter resistance when lifting the cover, revisit the screws to see if any of them are still threaded on to the device.

Step 3 — Battery



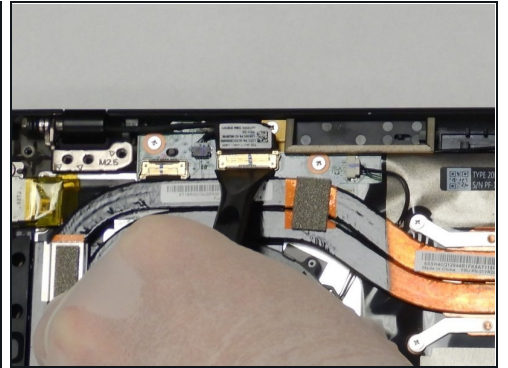
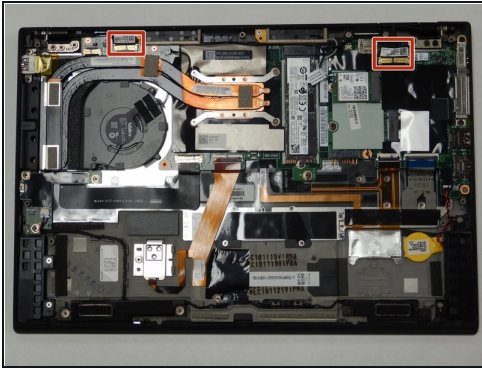
- Use the Phillips #0 screwdriver to remove the four 5 mm screws that secure the battery to the laptop frame.

Step 4



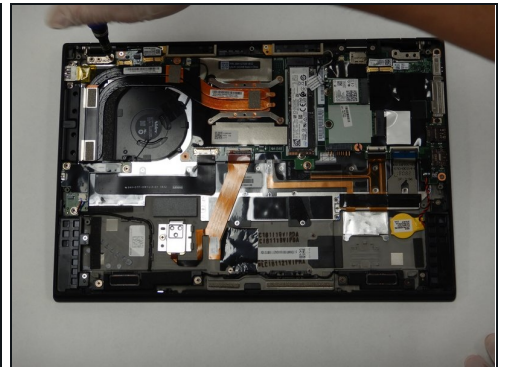
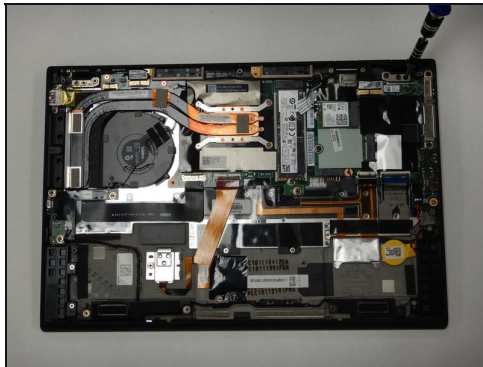
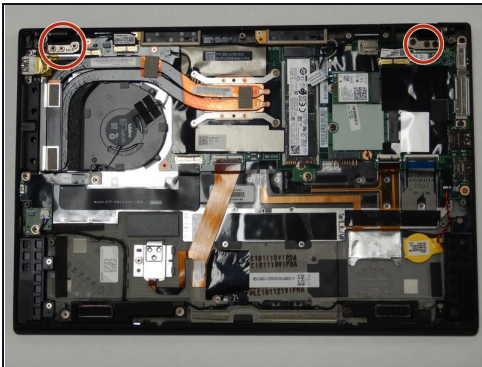
- Take out the battery by lifting it from the bottom edge of the laptop, and then pulling away from the motherboard.

Step 5 — Display



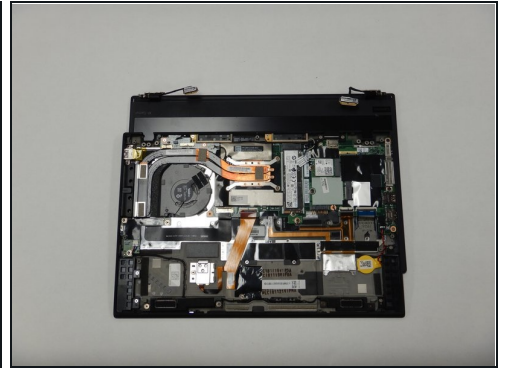
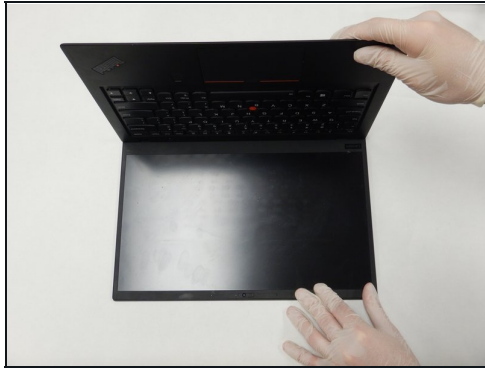
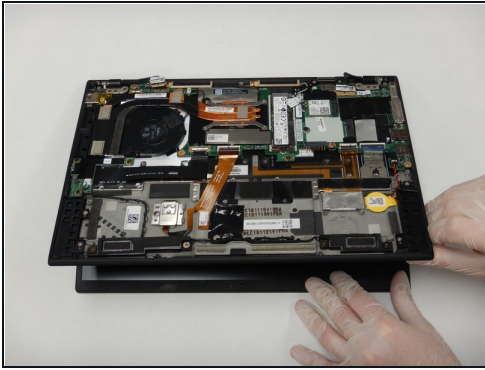
- Disconnect the two display cables from the motherboard by lifting the press fit connectors off the board with a spudger.

Step 6



- Using a Phillips #0 screwdriver, remove the six 5 mm screws connecting the display hinges to the device.

Step 7



- Open the device display to open the hinges.
- Pull the raised half towards yourself to remove the key board.

To reassemble your device, follow these instructions in reverse order.