



Google Pixel 2 Rear Camera Lens Glass Replacement

This repair guide was authored by a member of...

Written By: Micah Tanjay



INTRODUCTION

This repair guide was authored by a member of the iFixit community and hasn't been endorsed by Google. Learn more about our repair guides [here](#).

In this guide, we are going to replace a Google Pixel 2 rear camera lens glass. Note that this is a glass replacement, not a lens replacement.

Take caution not to scratch the lens when removing the glass in Steps 2 and 3.

TOOLS:

[Heat Gun](#) (1)
[Tweezers](#) (1)
[Toothpick](#) (1)
[Isopropyl Alcohol Wipes](#) (1)

PARTS:

[Google Pixel 2 Rear Back Camera Glass Lens Cover](#) (1)
[Google Pixel 2 Rear Camera Glass](#)

Step 1 — Rear Camera Lens Glass



- Blow dry the broken or scratched rear lens glass until it is a little bit too hot to touch.
- ① In this process, the adhesive attaching the lens to the lens frame is melted enough so the lens is easier to remove.

Step 2



⚠ Take extra caution when using sharp tools near the lens; if it gets damaged, the camera might have problems with auto-focusing.

- Remove the broken/scratched glass using a pair of [tweezers](#).
- Use a blow dryer to remove dust and tiny pieces of broken glass.

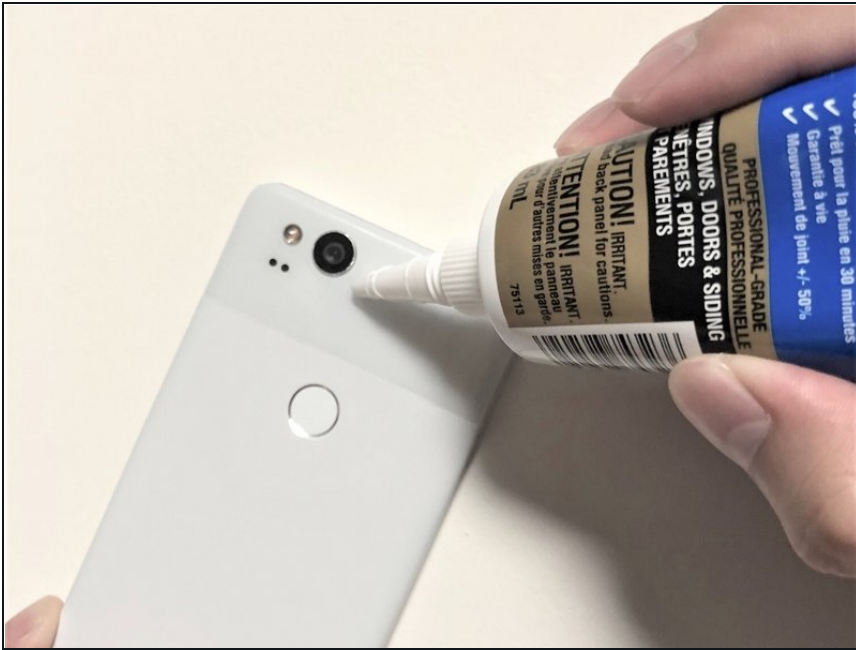
Step 3



⚠ Take extra caution when using sharp tools near the lens; if it gets damaged, the camera might have problems with auto-focusing.

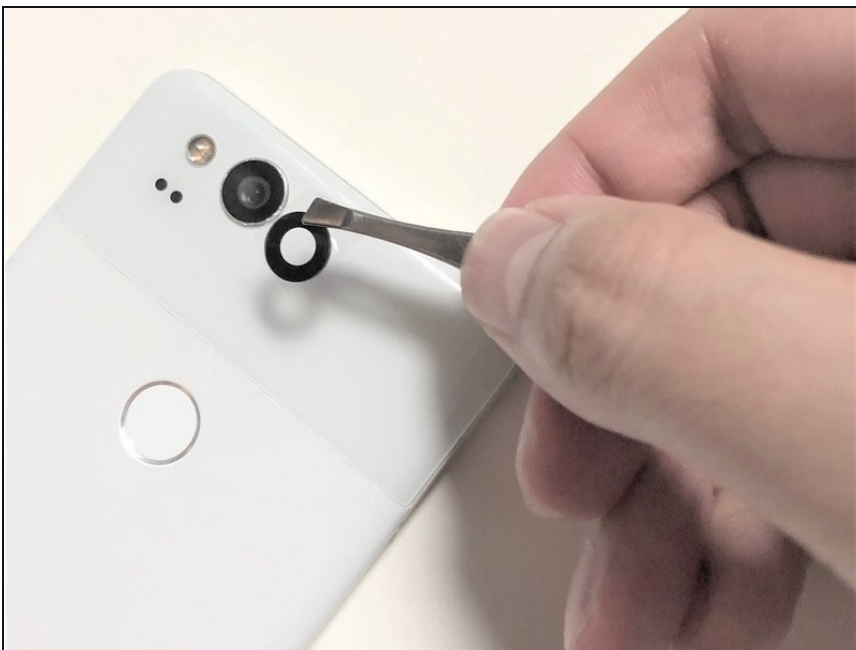
- Remove adhesive from the ledge of the lens frame using a pair of tweezers.
- ① The adhesive needs to be removed so the clear silicone waterproof sealant will stick to the edges. Make sure to remove as much adhesive as you can, and be careful not to scratch the lens.

Step 4



- Apply the clear silicone waterproof sealant after the lens frame is neat and clean.
- Use a wooden toothpick to gently apply the silicone sealant to the ledges of the inside shelf of the lens frame.
- ① The sealant does not dry quickly, so take your time applying the silicone evenly around the edges.

Step 5



- Place the new rear lens glass on the lens frame using a pair of tweezers.
- ① Make sure that the glassy side is facing outward. Place it firmly but gently.
- ① It takes about five minutes for the silicone to stick and about 24 hours to fully dry.

Step 6



⚠ Be careful not to press too much.

- Remove excess silicone from the edges using alcohol wipes. Make sure the lens is leveled evenly and flat.
- ⓘ Do not use your phone for about two hours. For best possible results, leave it for about 24 hours.

The Google Pixel 2 rear camera glass replacement is a difficult task to do and being extra careful is a must or lens can be damaged.