



# Toilet Water Supply Line Replacement

Update or replace an old water supply line on the toilet.

Written By: Nicholas Mills



## INTRODUCTION

This replacement guide will demonstrate step-by-step how to replace the water supply line for your toilet.

Leaks or faulty water lines can cause costly damage to your home. It is best to replace any hardware concerns before they disrupt the functionality of your household. Most manufactures suggest to replace hardware every four to five years or earlier if needed.

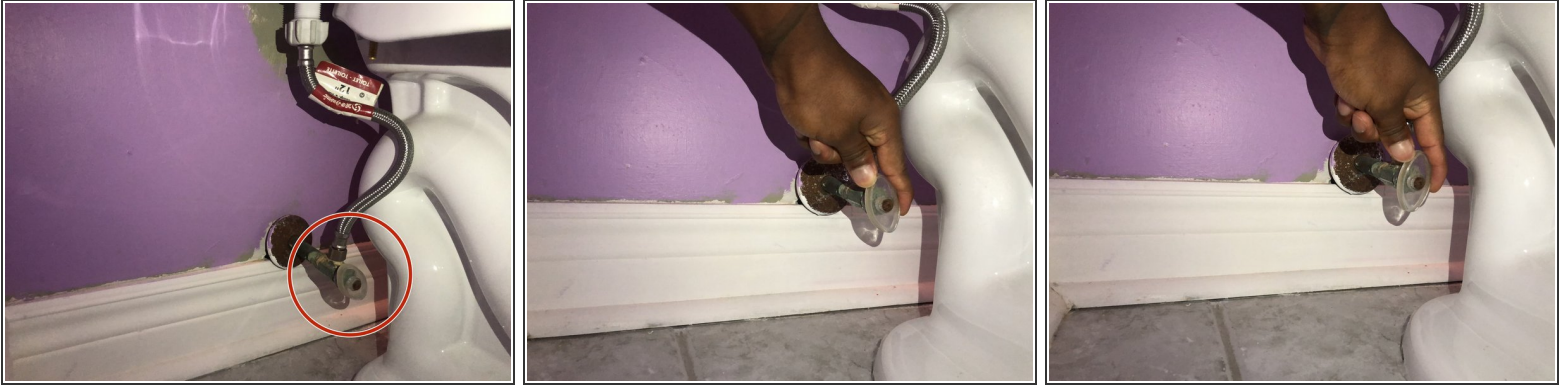
Before using this guide, inspect the toilet and turn the water shut off valve to restrict the flow of water as shown in step 1.



### TOOLS:

- [Towel](#) (1)
  - [Vice Grips](#) (1)
  - [Toilet Supply Line](#) (1)
  - [Small Bucket](#) (1)
-

## Step 1 — Water Supply Line



- Before any work is done, inspect the hardware carefully and note any concerns. Locate the shut off valve underneath the toilet and turn it clockwise until it cannot turn any further. Do not turn past the stop point as this could damage the hardware completely.
- ⓘ The valves differ from toilet to toilet but the majority operate the same.

## Step 2



- If water is active in the line when the turn action is complete the, a complete shut off of water from the main value of the home might be necessary.

### Step 3



- Next, hold down the flush lever/button until all the water in the tank is drained from the tank.

**i** A little water may still remain in the tank. You will need to remove this water as well.

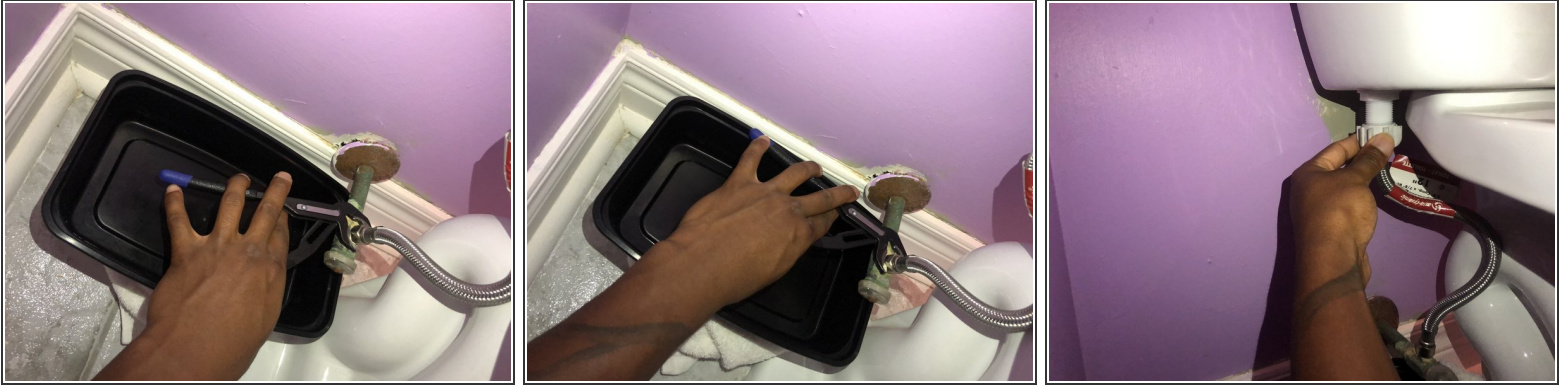
### Step 4



- To remove any excess water from the tank. Place a container to catch the water that might drain by placing a bucket with a towel underneath the toilet to catch any water.



## Step 5



- Use a vice grip to loosen the nut attached to the main waterline.
  - Use your hand to loosen the Bullock Nut attached to the toilet tank.
- ⚠ Get the bucket ready to catch any excess water from the toilet tank.

## Step 6



- Attach the nut of the new flex water supply line to the main water line.
- Using your vice grips, tighten the nut counter-clockwise.

## Step 7



- Attach the Bullock Nut to the threads on the bottom of the toilet tank and hand tighten the nut counter-clockwise.

## Step 8



- Turn the knob attached to the main water line on, counter-clockwise.
- Once the water is restored be sure to check for any leaks.

To reassemble your device, follow these instructions in reverse order.