

INTRODUCTION

If your Galaxy Note9 battery drains quickly, won't charge, or won't power on it may be time for a replacement. Follow this guide to install a fresh battery.

For your safety, discharge your battery below 25% before disassembling your phone. This reduces the risk of a dangerous thermal event if the battery is accidentally damaged during the repair. If your battery is swollen, [take appropriate precautions](#).

For optimal performance, after completing this guide, [calibrate](#) your newly installed battery: Charge it to 100% and keep charging it for at least two more hours. Then use your phone until it shuts off due to low battery. Finally, charge it uninterrupted to 100%.

TOOLS:

[Suction Handle](#) (1)
[iOpener](#) (1)
[iFixit Opening Picks \(Set of 6\)](#) (1)
[Phillips #000 Screwdriver](#) (1)
[Spudger](#) (1)
[iFixit Adhesive Remover](#) (1)

PARTS:

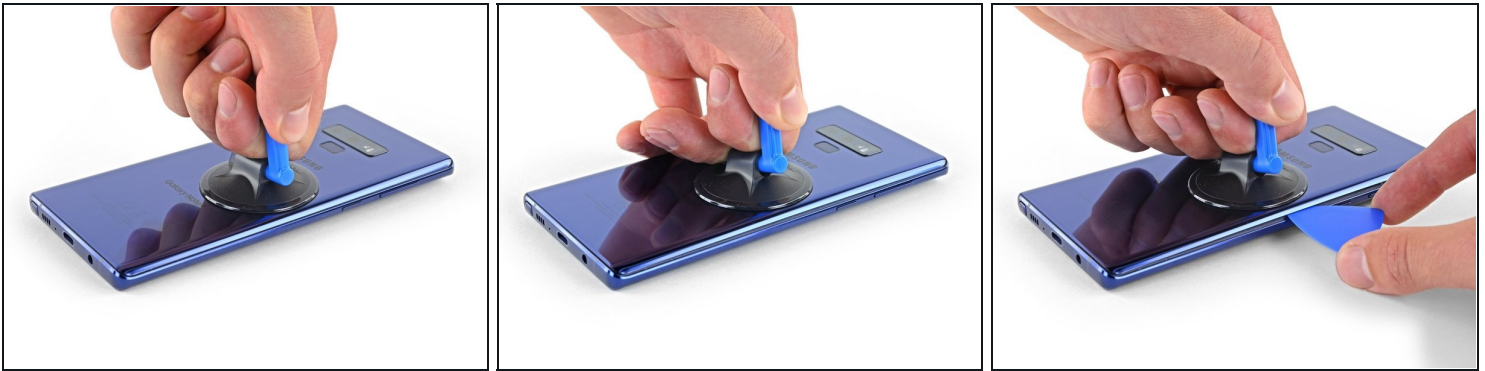
[Galaxy Note9 Battery](#) (1)
[Galaxy Note9 Battery Adhesive](#) (1)
[Galaxy Note9 Rear Cover Adhesive](#) (1)

Step 1 — Apply a heated iOpener



- Power off your phone before beginning disassembly.
- Use a hairdryer, a heatgun, or [prepare an iOpener](#) and apply it to the right edge of the back of the phone for about a minute to soften the adhesive underneath.

Step 2 — Insert an opening pick



- Apply a suction handle to the back cover.
 - Lift with a suction handle to create a gap between the back cover and the frame of the phone.
 - Insert an opening pick into the gap.
- ⓘ If the glass is badly cracked, [cover it in packing tape](#) to create a surface for the suction cup to adhere to.

⚠ If the adhesive won't budge, apply more heat, **not** excessive force. Too much force could break the glass.

Step 3 — Cut through the adhesive



- Note that there is more adhesive along the top edge and around the camera bezel than around the rest of the phone.
 - Cut carefully around the left edge near the fingerprint sensor or you risk damaging the ribbon cable inside.
- ⓘ If, at any point, the adhesive feels stubborn, apply more heat—not more force.

Step 4 — Slide the opening pick



- Starting from the center, cut the adhesive up and down the right side with an opening pick.

⚠ Do not insert the pick more than halfway into the phone when cutting near the fingerprint sensor or cameras, or you risk damaging internal components.

Step 5



⚠ Be careful near the corner, as the glass is very weak. Apply more heat at any time if the adhesive becomes stuck.

- Leave an opening pick in the upper-right corner.
- Use another opening pick to cut the adhesive around the bottom-right corner.
- Leave that opening pick in the phone.

Step 6



- Use a heat gun or hair dryer or apply a heated iOpener to the left side of the rear panel for at three minutes to soften the adhesive underneath.

Step 7



⚠ Be careful near the corners, as the glass is weakest there.

- Insert an opening pick into the lower-left corner of the rear panel.
- Using another opening pick, cut the adhesive along the left edge of the rear panel.

⚠ Don't insert an opening pick in more than halfway on the left edge near the fingerprint sensor or you may damage the ribbon cable inside.

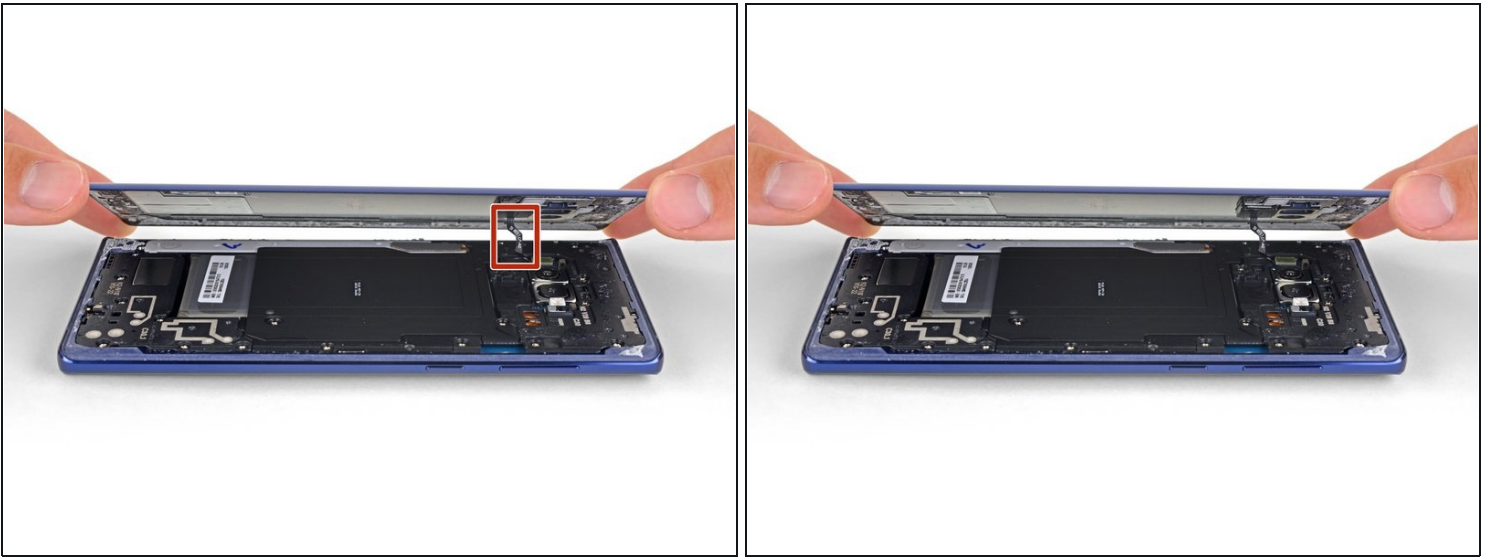
ℹ It is fine if opening picks fall out as the back cover becomes separated.

Step 8



- Using the inserted opening pick, carefully cut the adhesive around the upper-left corner of the rear panel.
 - Finally, cut the last of the adhesive along the top of the phone.
- ① Use an iOpener, hair dryer, or heat gun to apply more heat as needed where you are cutting the adhesive.

Step 9



- Separate the right side of the rear cover first.
- Tilt the cover up along the left edge to expose the fingerprint sensor ribbon cable.

⚠ Do not pull out the fingerprint sensor ribbon cable yet.

ⓘ The fingerprint sensor cover might stay attached to the midframe.

Step 10 — Disconnect the fingerprint sensor



- Use the tip of a spudger to pry the fingerprint sensor ribbon cable up and out of its socket.

Step 11

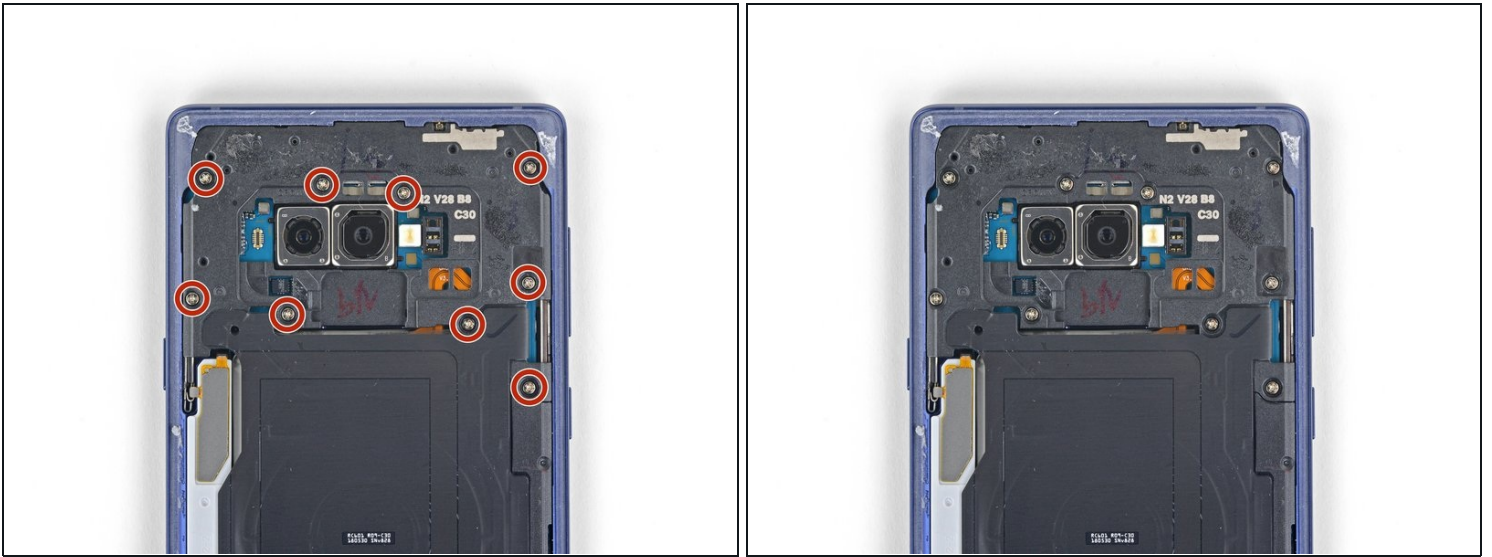


- Remove the back cover.

★ To re-install the back cover:

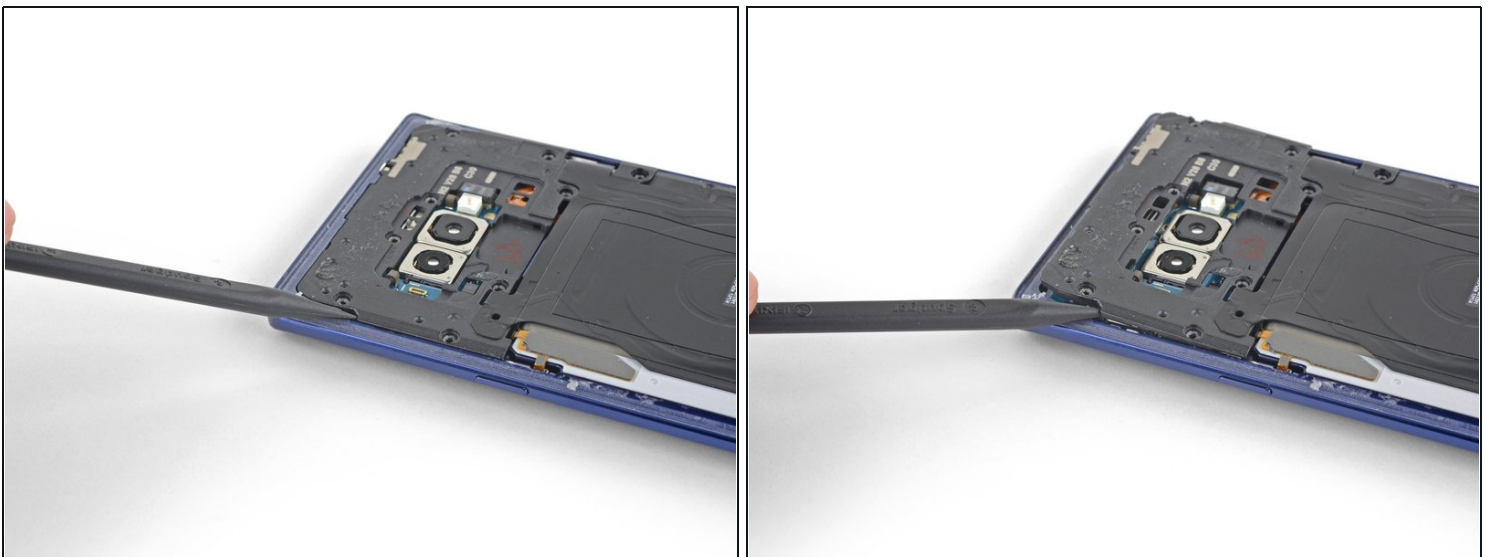
- Use tweezers to peel away any remaining adhesive from the phone's chassis. Then clean the adhesion areas with high concentration isopropyl alcohol (at least 90%) and a lint-free cloth to prep the surface for the new adhesive. You don't have to clear out adhesive down to the plastic but larger pieces should be removed.
- Turn on your phone and test your repair before installing new adhesive and resealing the phone.
- Carefully apply the new adhesive to the back cover, then line up one edge of the glass against the phone chassis and firmly press the glass into the phone.

Step 12 — Remove the upper midframe



- Use a Phillips screwdriver to remove the nine 4 mm screws securing the upper midframe.

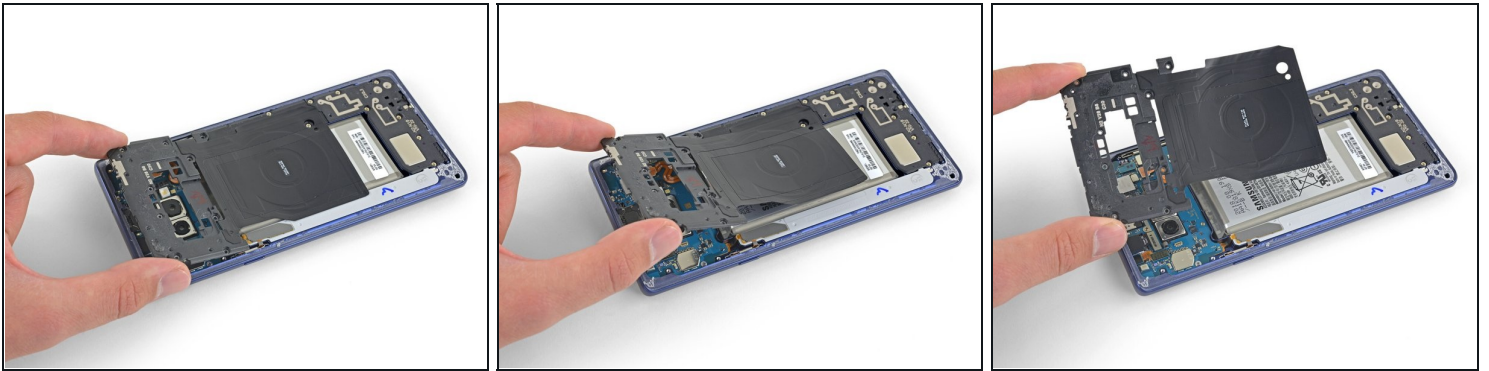
Step 13



- Insert the tip of a spudger into the upper-left corner of the upper midframe.
- Pry the upper midframe out of the phone.

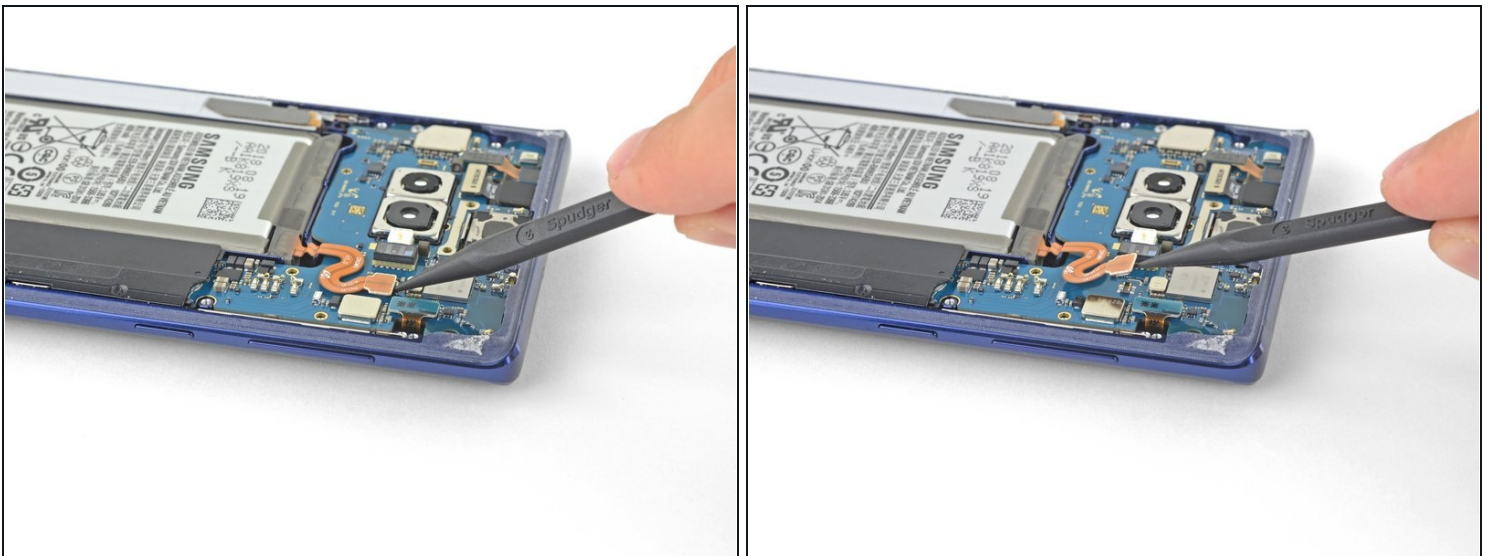
i The upper midframe snaps into and out of place.

Step 14



- Peel the wireless charging coil off the battery starting with the left side.
- ⓘ The adhesive is weak but you can use an opening pick to cut it if necessary.
- ★ During reassembly start by snapping the midframe into place first before adhering the wireless charging coil.

Step 15 — Disconnect the battery



- Use the tip of a spudger to disconnect the orange ribbon cable connecting the battery to the motherboard.

Step 16 — Remove the battery



- Apply a few drops of 90% isopropyl alcohol in the battery well along the bottom and in the upper-left corner of the battery.
- Wait a couple of minutes for the alcohol to soften the adhesive under the battery.
- Tilt the phone at various angles to help the alcohol flow under the battery.

Step 17



- Apply a suction cup to the battery.
 - ⓘ It may take multiple attempts to get the suction cup to adhere. Apply it as close to the center of the battery as possible and avoid the white sticker at the bottom of the battery.
- Lift the battery straight up until there is a gap large enough to insert the opening pick.
- Insert an opening pick underneath the bottom edge of the battery and twist to loosen the battery adhesive.
 - ⓘ If the battery won't pry out easily, apply a little more alcohol and repeat the last step to further weaken the adhesive.
- Remove the battery.

⚠ Do not bend the battery. Do not reuse the battery.

To reassemble your device, follow the above steps in reverse order.

Take your e-waste to an [R2 or e-Stewards certified recycler](#).

Repair didn't go as planned? Check out our [Answers community](#) for troubleshooting help.

Compare your new replacement part to the original part—you may need to transfer remaining components or remove adhesive backings from the new part before installing.