



# G'z One Boulder Camera Replacement

This will show how to install the 1.3 megapixel camera that is located in the lid near the hinge.

Written By: Henry Johnson





## TOOLS:

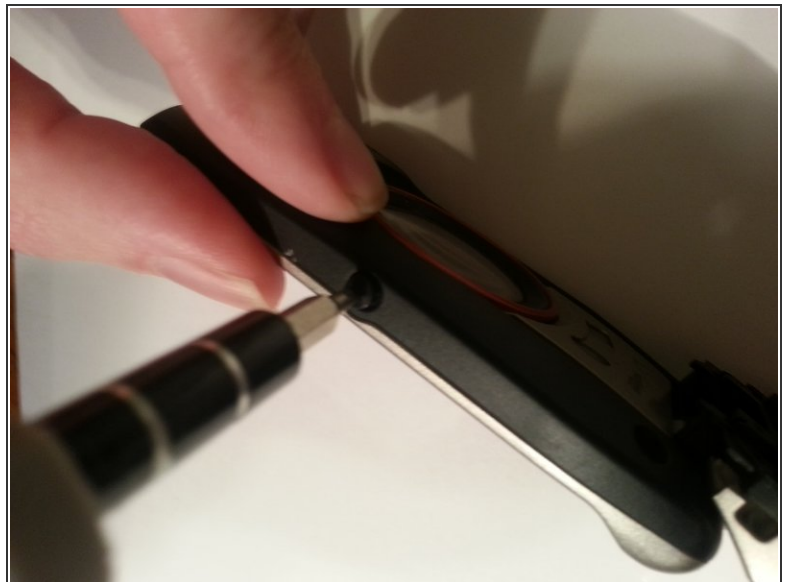
- [Flathead 3/32" or 2.5 mm Screwdriver](#) (1)
- [Phillips #00 Screwdriver](#) (1)
- [iFixit Opening Tools](#) (1)

## Step 1 — Inside Screen Cover



- There are 4 black screws that need to be removed on the top of the lid. A 1.5mm flathead screwdriver will work on the star shaped screw heads.
- ⓘ Make note that two of the screws closest to the hinge are longer than the other two.

## Step 2



- Remove the two side screws.

⚠ *When reassembling you may need to press the front and back of the lid together when inserting these side screws so that the holes align.*



### Step 3



- Use a plastic opening tool to remove the screen cover from the rest of the lid.

### Step 4



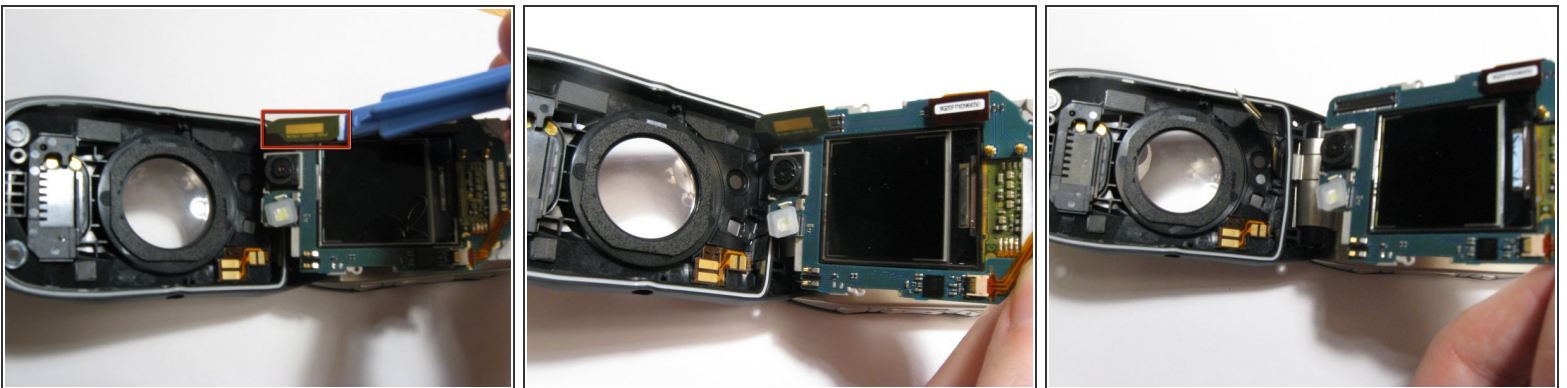
- Your phone should look like the picture to the left.
- ☑ *If reassembling from a previous step make sure the ribbon cable is properly situated before securing the front cover.*

## Step 5 — Front Logic Board




- Remove one screw located on the left side of the phone with the pictured orientation in mind.
- This will release the logic board from the back case.
- Lift the board out of the case starting with the top. Continue to fold it forwards to access the ribbon cable still connecting it.

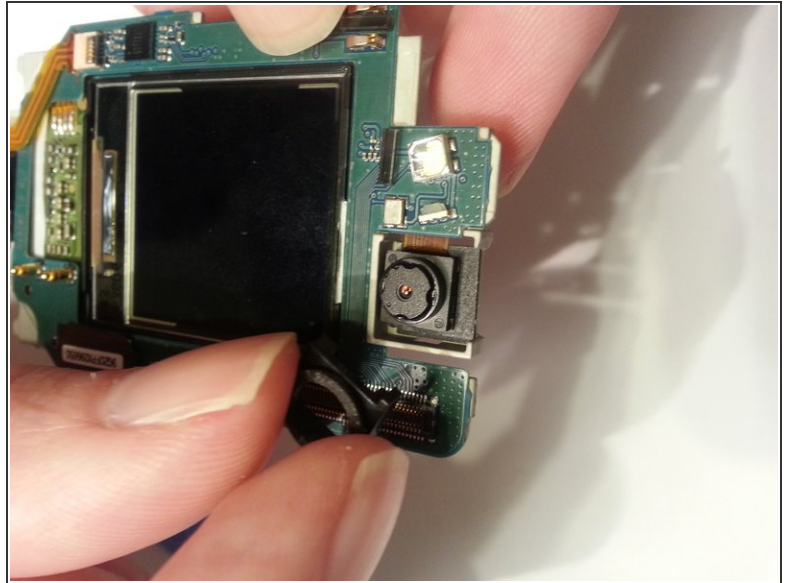
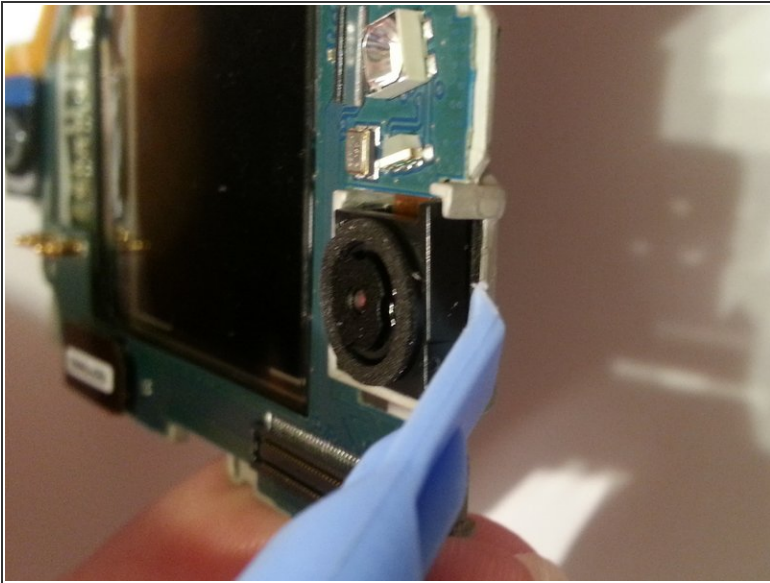
## Step 6



- Pull the logic board out with a pry stick gently from bottom to top at the current orientation.
- The ribbon cable will be connected underneath the logic board. A small amount of force is required to disconnect them.

 *Although some force is required to lift up the board, be careful as to not bend any of the pins on either side.*

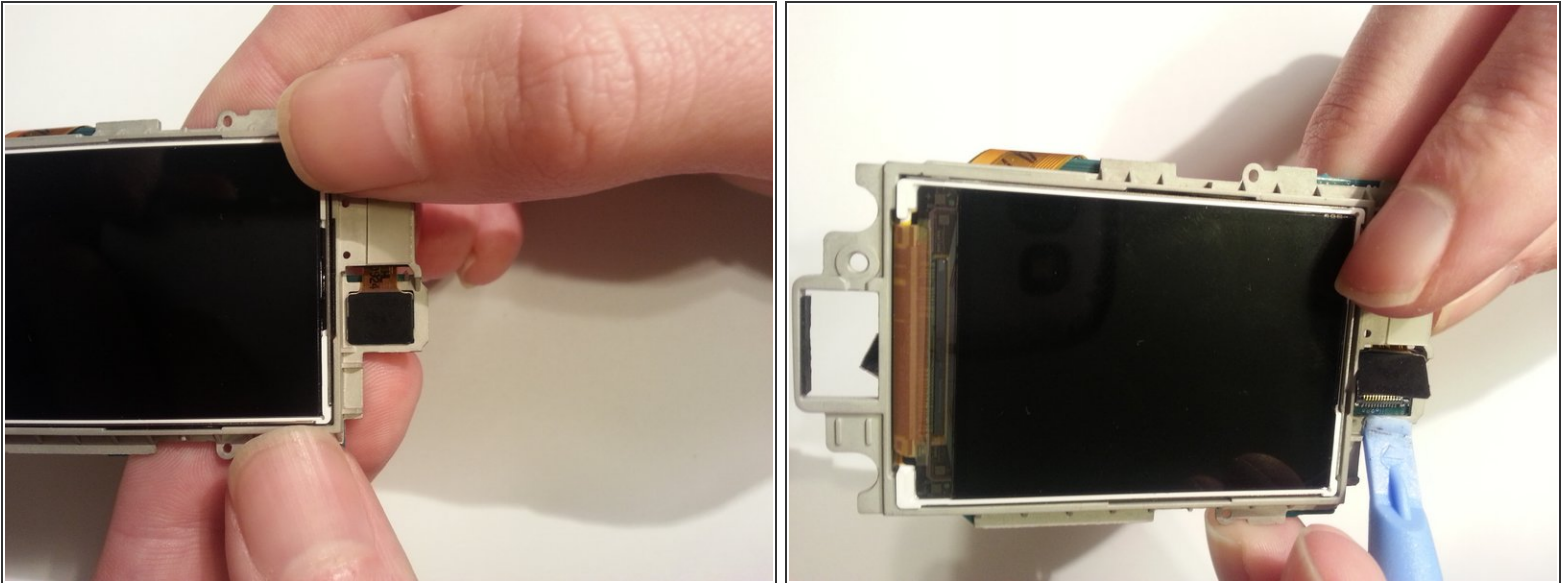
## Step 7 — Camera



- There is a plastic square that surrounds the camera and keeps it in place. Pry this up first making note of the orientation of the part and how there is a tab pointing in the same direction as the ribbon cable.
- Once it is loosened the surround can be removed and set aside. The next step is to detach the ribbon cable.

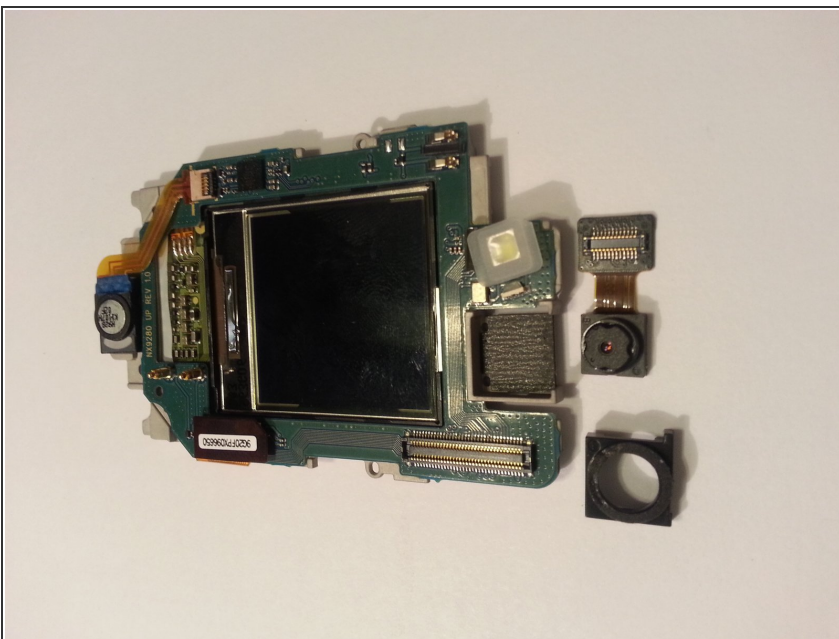


## Step 8



- Now turn the phone over so that you are looking at the inside LCD and the back of the camera.
- Use a pry stick to disconnect the ribbon cable from the rest of the PCB board.
- ⓘ Gently feed the ribbon cable through the hole to completely remove the camera from the phone. The connector pulls straight through, do not bend or twist the ribbon cable.

## Step 9



- These are the parts you should have now.

To disassemble your device, follow these instructions in reverse order.