



# Anker SoundCore mini disassembly

This guide describes how to disassemble and...

Written By: Sebastian



# INTRODUCTION

This guide describes how to disassemble and reassemble the Anker SoundCore mini bluetooth box. Once disassembled, single parts can be exchanged / repaired easily.

## TOOLS:

Screwdriver (PH0, PH1) (1)

Plastic Cards (1)

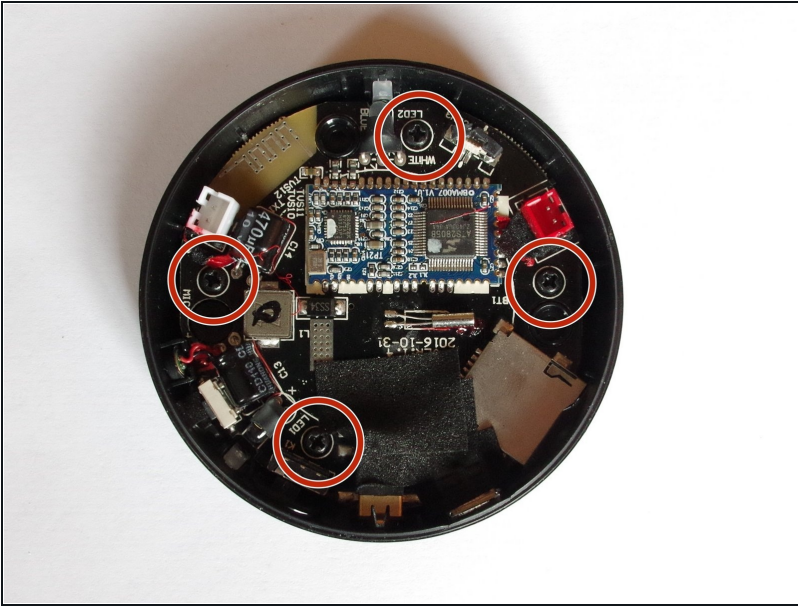
*useful, but not necessarily required*

## Step 1 — Casing opening



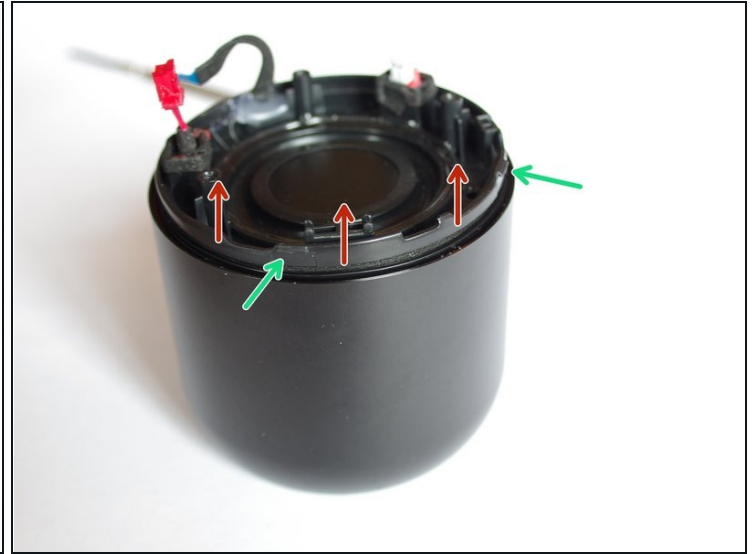
- Carefully remove the rubber cover (glued) from the base.
- Remove the 3 screws using a screwdriver.
- Pull the lower part carefully to open the casing.
  - You may use a slotted screwdriver, [plastic card](#) etc. along the slit to open as the cables are fixed with sealing paste inside.
- When the slit opened, remove
  - the red battery cable plug and the white speaker cable plug (red arrows) from the socket by pulling and
  - the volume/play control cable by pulling the black lash (green arrow) upward and pulling the cable out of the socket
- to separate the lower (PCB) part from the speaker & battery part.

## Step 2 — Main PCB removal



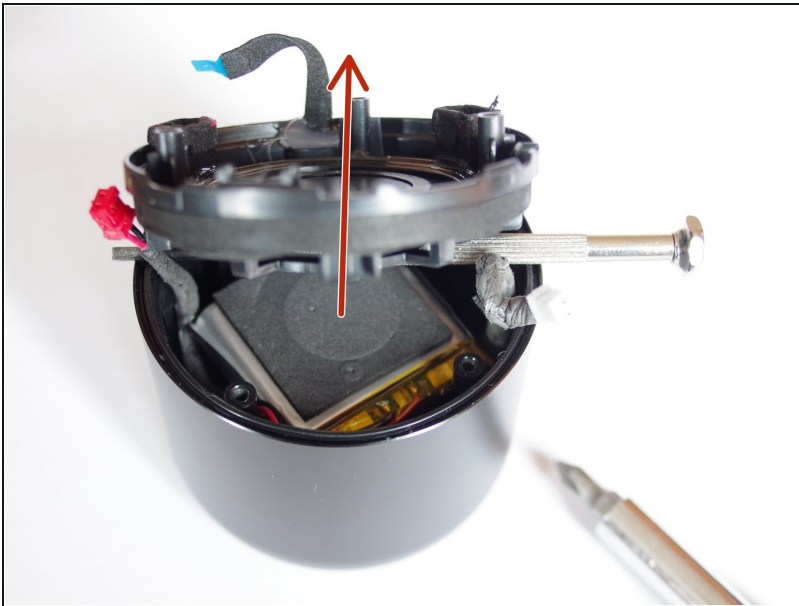
- Remove the 4 screws using a screwdriver and take off the PCB from the lower casing.
- Note: The On/Off switch cover is neither fixed in the casing nor on the PCB. When remounting, pay attention to the correct positioning of the switch cover.

### Step 3 — Speaker / battery part opening



- Remove the 4 screws using a screwdriver.
- Remove the inner separation from the casing by pulling, starting at the opposite side of the volume/play switch cable.
- Be careful as the volume/play switch cable is still fixed on the other side, so the separation cannot be removed without removing the connector on the other side.
- You may use a slitted screwdriver, plastic card etc. to push at the lashes (green arrows).

## Step 4 — Battery removal



- Remove the battery pack carefully by pulling it upward (it is fixed by glue only to the speaker casing).

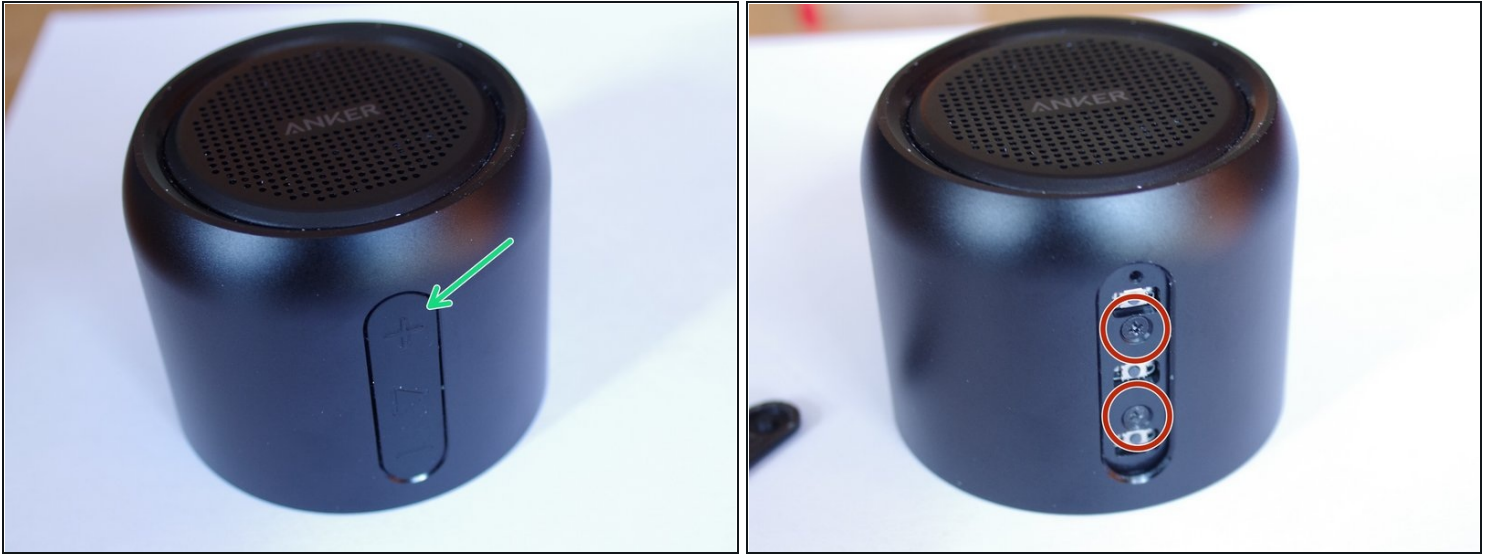
## Step 5 — Speaker removal



- Remove the volume/play switch cable by pulling the black lash (green arrow) outward, then pulling out the connector from the socket. Remove the inner separation and the volume/play switch cable linked with it.
- Remove the 2 screws using a screwdriver and remove the speaker.



## Step 6 — Volume/play switch removal



- Remove the volume/play switch rubber cover (green arrow).
  - Remove the 2 screws using a screwdriver.
  - Pull out the volume/play switch control panel from the inner side of the casing.
- 

To reassemble your device, follow these instructions in reverse order.

When reassembling, pay attention

- to correctly insert all connectors into their sockets
- to the right positioning of the speaker and battery cables when pulling them through the inner separation (and reconnecting them to the PCB)
- to correctly position the On/Off switch cover when remounting the PCB.

To ensure a similar sound quality as before, the cable entries in the inner separation may need sealing after the cables have been reconnected. If this becomes necessary, hot glue or some sealing paste/wax could be used for this.