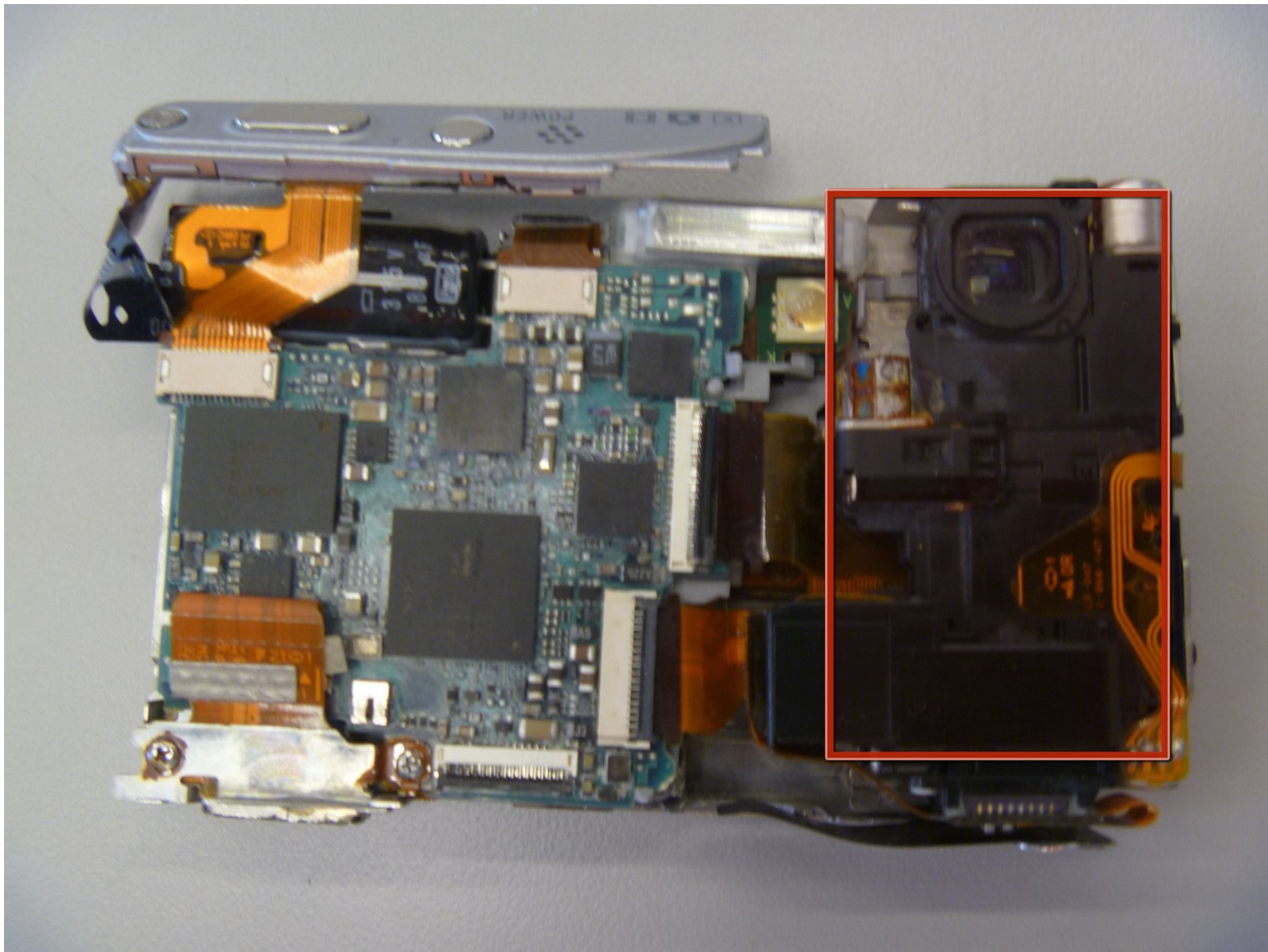




Sony Cyber-shot DSC-T9 CCD Module Replacement

This guide gives instructions on how to access and install a CCD module into the Sony Cyber-shot DSC-T9 camera.

Written By: Stephannie Allen



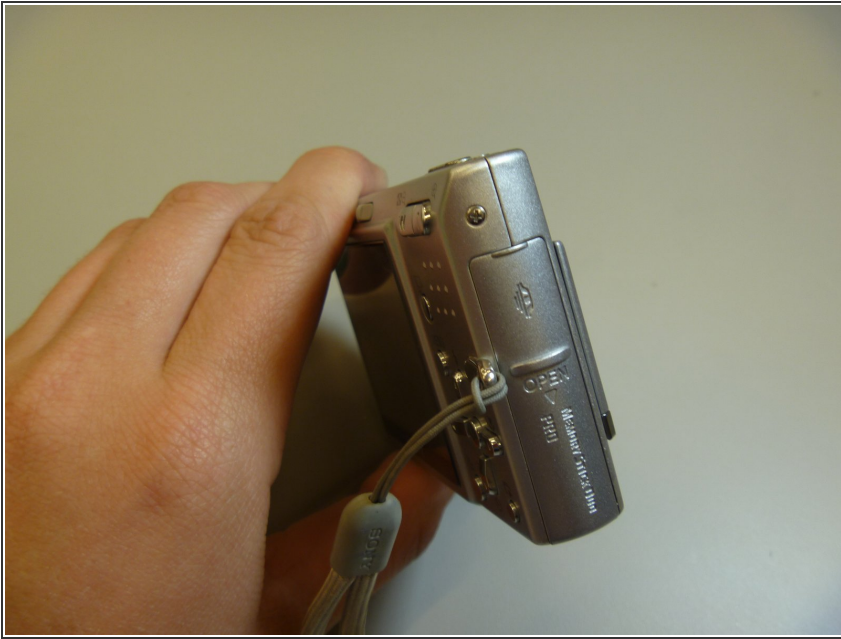
INTRODUCTION

This guide will teach the user how to disassemble and access the CCD module for replacement or installation.

TOOLS:

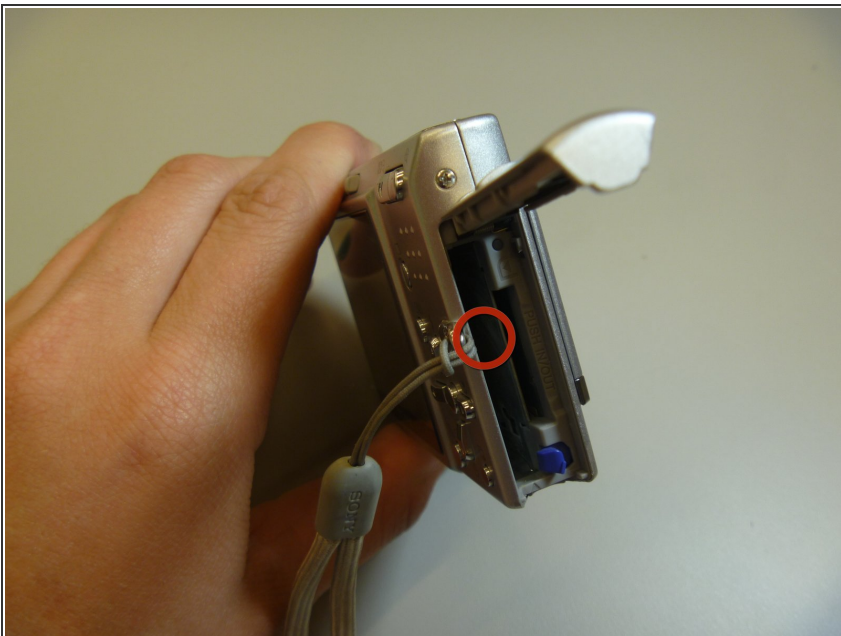
- [Phillips #00 Screwdriver](#) (1)
 - [Spudger](#) (1)
 - [Tweezers](#) (1)
 - [iFixit Opening Tools](#) (1)
-

Step 1 — Battery



- The battery cover is located on the right side of the camera.
- Slide the cover to expose the battery.

Step 2



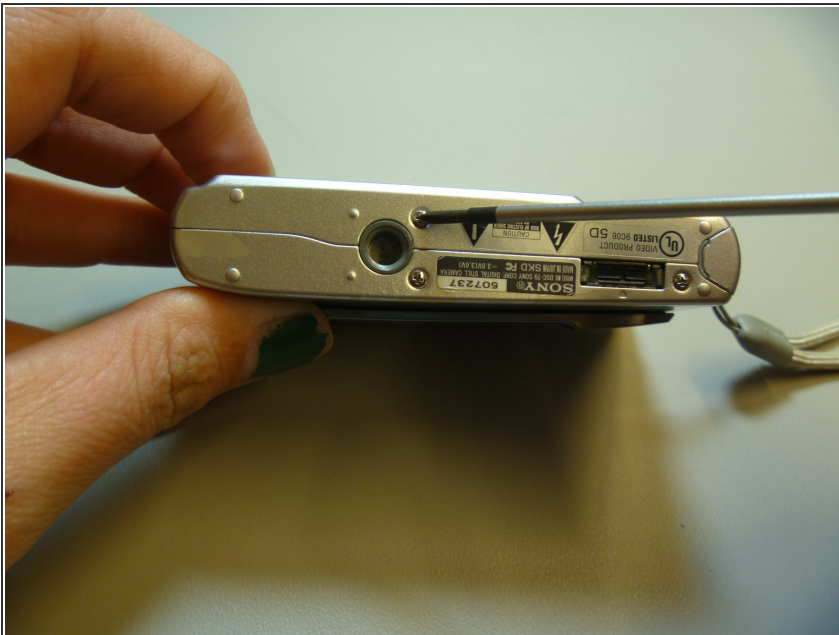
- Ensure that the battery lines up properly with the slot in the camera.
- Slide battery in.
- Slide cover closed.
- ⓘ Battery not shown

Step 3 — Front Cover



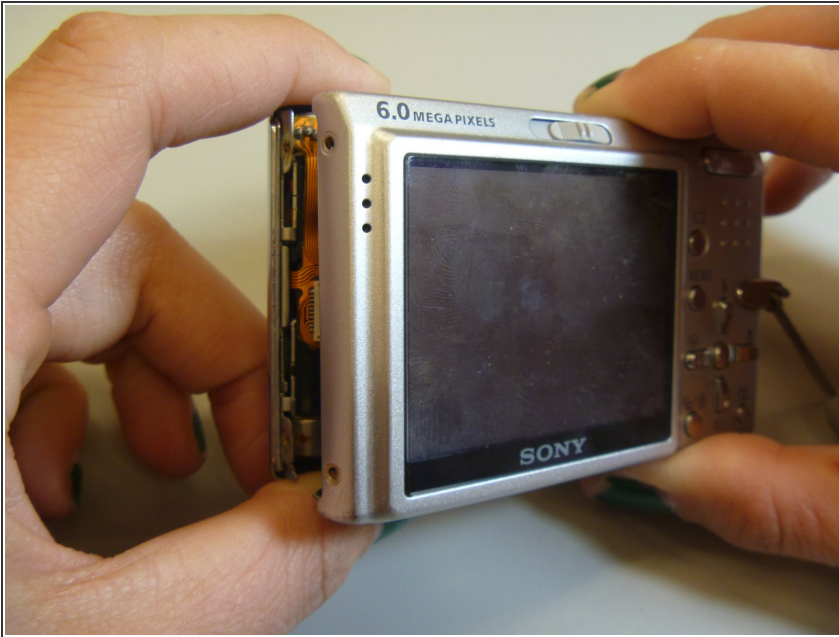
- Remove screws from outside of camera. There are 6 screws total.
- 3 screws on underside.
- 1 screw on right side, near battery cover.
- 2 screws on left side.

Step 4



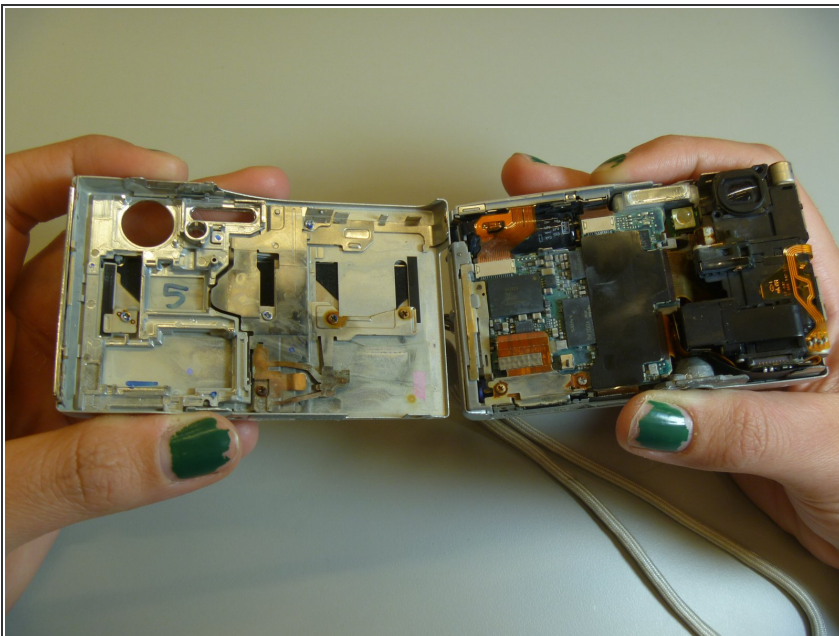
- Use screwdriver to remove screws.

Step 5



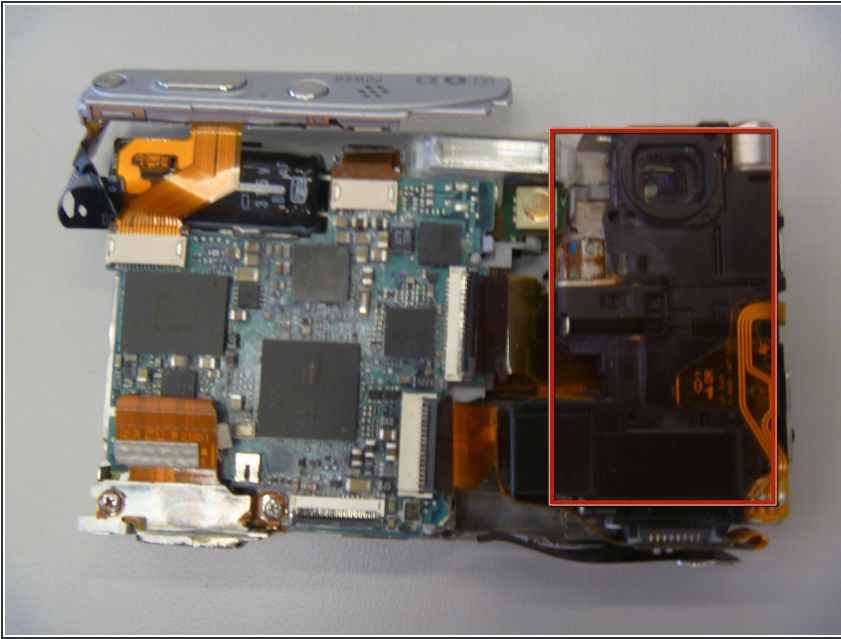
- Gently pull the front cover off of the main camera.
- All of the inner parts of the camera are attached to the back screen.

Step 6



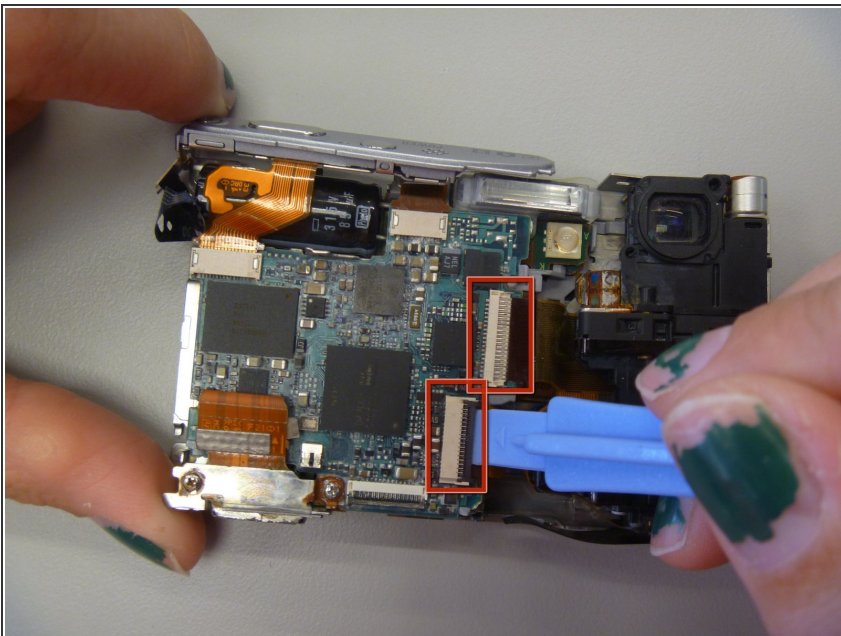
- The front cover is now removed from the camera and the internal hardware is now exposed.

Step 7 — CCD Module



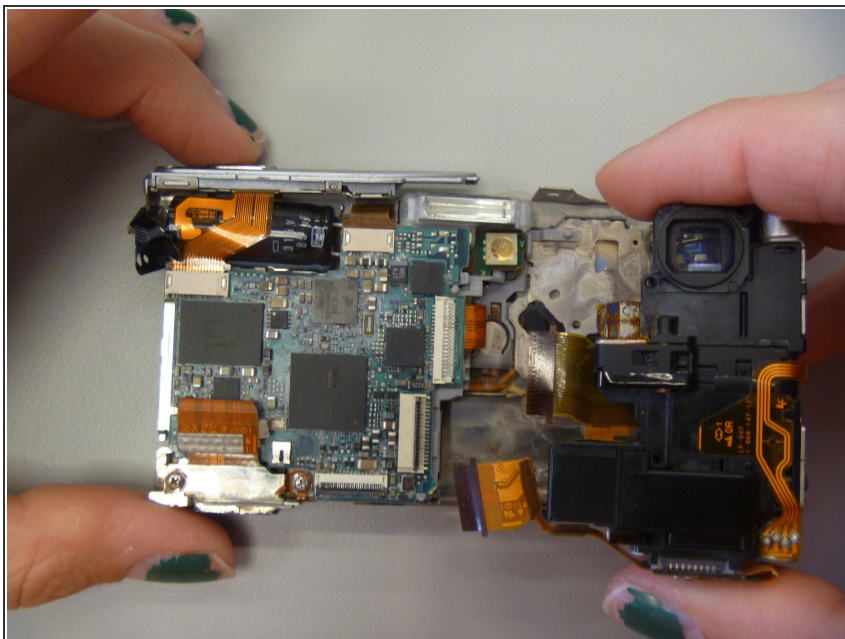
- This is the CCD module.

Step 8



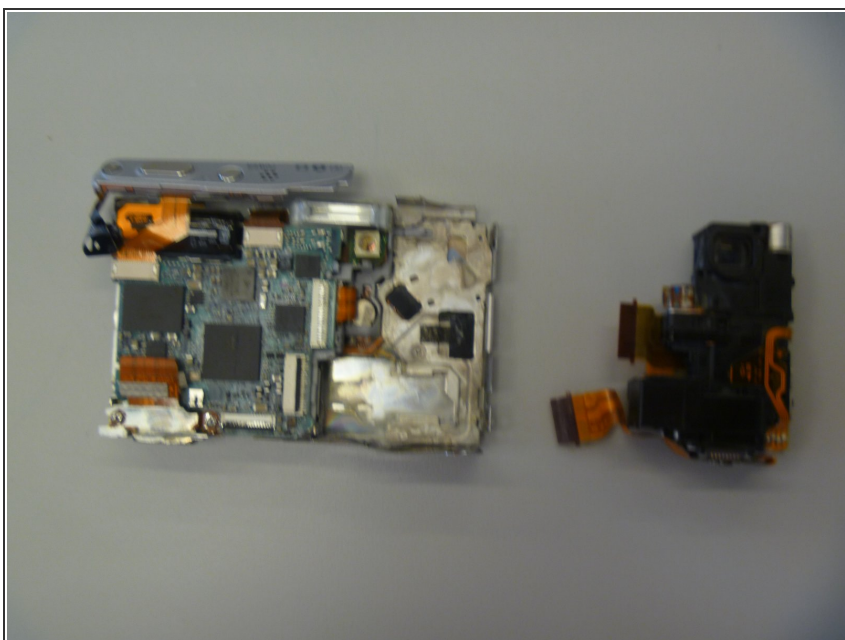
- Use plastic opening tool pop open the two ribbons attaching to the CCD module.
- These are the two ribbons.

Step 9



- Remove CCD module.
- ① You may have to tug on the ribbons to remove the CCD module.

Step 10



- The CCD module is now removed from the camera.

To reassemble your device, follow these instructions in reverse order.