



# Disassembling InFocus LP435Z External Shell

This guide will demonstrate how to remove the external shell of the projector to access it's internal parts.

Written By: Andrew Kennedy



---

## INTRODUCTION

The external shell protects the delicate internal components of the projector from dust, debris, and shock. It is secured with many screws to keep it securely in place, and it must be removed to do any repairs on the inside of the device. As the shell houses the exterior projector buttons, if any of them are damaged, and the button circuit board is intact, replacing the top of the shell will restore the projector to working order.



### TOOLS:

- [Phillips #1 Screwdriver](#) (1)
  - [Phillips #2 Screwdriver](#) (1)
  - [iFixit Opening Tools](#) (2)
-

## Step 1 — External Shell



- Place the projector on its back (buttons down) with the lens facing away from you.
- Remove the two 84mm screws in the upper left and right corners of the projector using the Phillips #2 screwdriver.
- Remove the remaining three 8.5mm screws using the Phillips #1 screwdriver.

## Step 2



- Use the plastic opening tools to push down the clips holding the lamp cover in place, and remove it.
- ⓘ There is no lamp assembly in the projector used in this guide, yours may appear different.

## Step 3



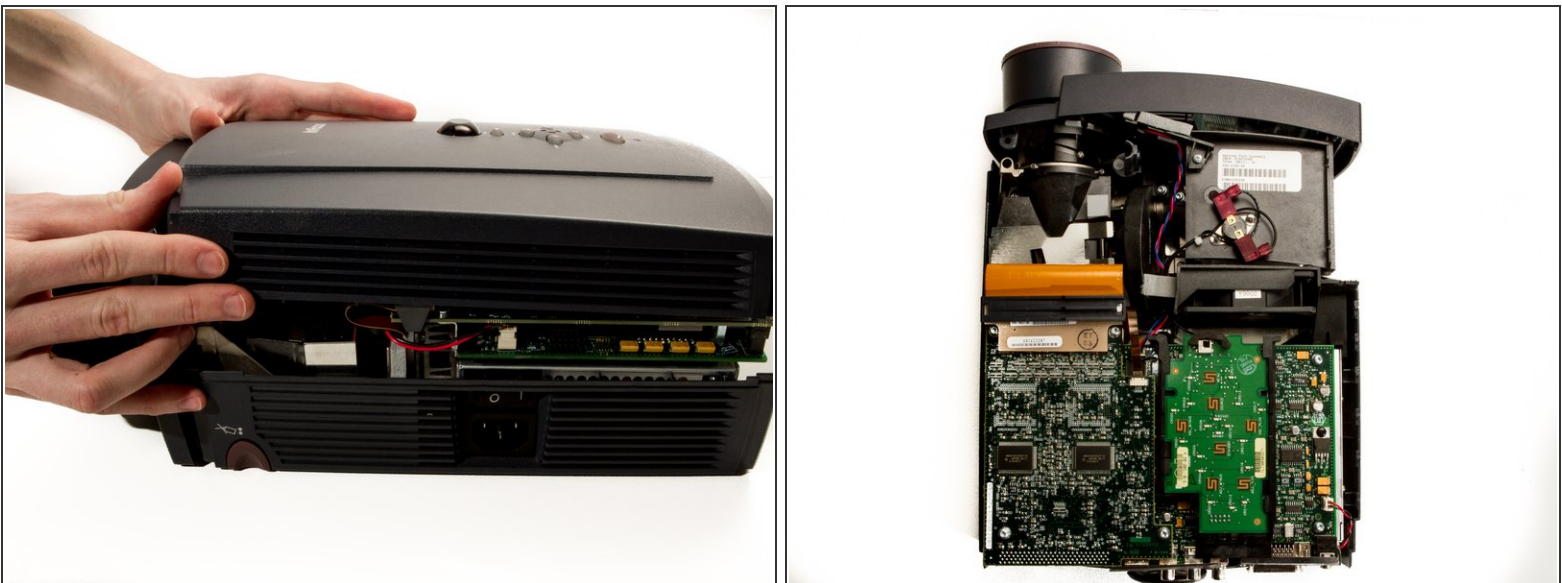
- Remove the two 8.5mm rear screws holding the rear case plate to the projector using the Phillips #1 screwdriver.
- Pull the rear plate straight off and set it aside.

## Step 4



- Flip the projector over and turn around so that the lens faces you.
  - Twist the gray zoom adjustment ring clockwise and extend the lens all the way out, and then slide the zoom adjustment ring all the way towards the end of the lens as far as it will go.
  - Slide the front case plate towards the loosened zoom adjustment ring, until the top plate of the projector is freed from underneath the lip of the front case plate.
- i** The front case plate will not come all the way off due to the zoom adjustment ring obstructing it. It will merely slide forward a bit.

## Step 5



- Lift away the top case plate and set it aside.

This document was generated on 2020-11-23 07:20:22 AM (MST).

To reassemble your device, follow these instructions in reverse order.