



# Ricoh Super 8 800z Handle Assembly Replacement

This guide will help you replace the handle assembly on the Ricoh Super 8.

Written By: Nicholas steven Thompson



---

## INTRODUCTION

The foldable handle is part of what made the Super 8 camera iconic. The intuitive and easily stored design allowed for steady on-the-go filming.

---



### TOOLS:

- [Soldering Workstation](#) (1)
  - [Nylon Tipped Tweezers](#) (1)
  - [Phillips #000 Screwdriver](#) (1)
-

## Step 1 — Handle Assembly



- Open the handle's battery compartment and remove the batteries from the handle.

## Step 2



- Using the Phillips #000 screwdriver, remove the three screws on the round plate on the right side of the camera handle. This is the side with the handle lock release button.

### Step 3



- Remove the round metal plate.
- Then, shift the handle so you have clearance to pass one of the legs of the button through the opening.

### Step 4



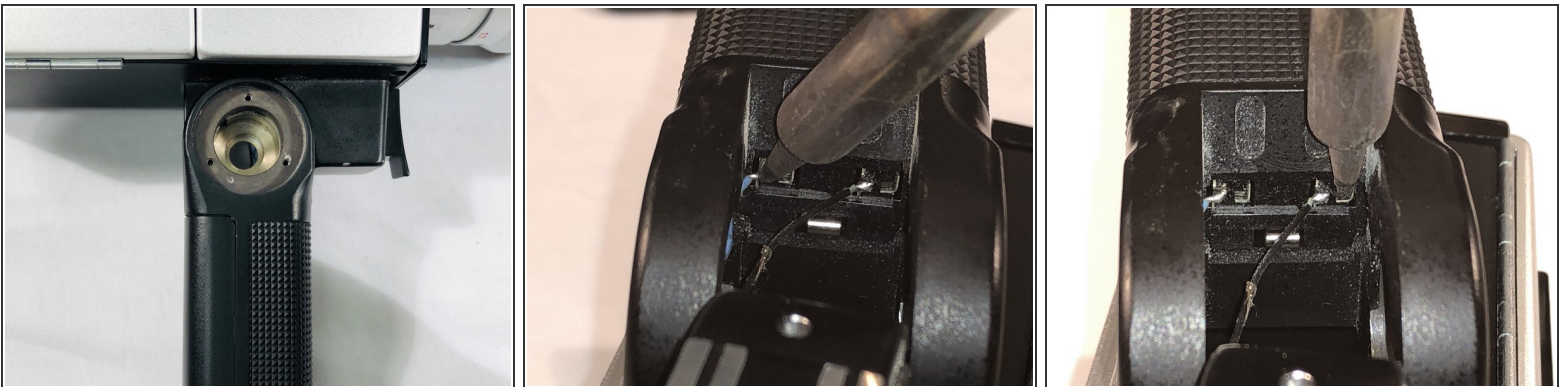
- Pull the button out at an angle.
- Remove the spring beneath it with a pair of tweezers.

## Step 5



- Flip the camera to the other side and remove the screws from the other round metal plate with a Phillips #000 screwdriver.
- ☑ When replacing this plate, make sure the cutout in the plate surrounds the wiring in the handle. You may break the wiring if the plates are not seated well or if placed incorrectly.

## Step 6



- Pull the handle slowly away from the camera and shift the handle to allow access to the wire connections.
- Desolder these wires carefully and you can now remove the handle.
- 📘 For a informative guide on how to Solder/Desolder check out [this guide](#).

To reassemble your device, follow these instructions in reverse order.