



# Ricoh Super 8 800z Eyepiece Adjuster Replacement

This guide will help you replace the eyepiece focus adjuster for the Ricoh Super 8 800z camera.

Written By: Nicholas Steven Thompson



## INTRODUCTION

Many Super 8 cameras feature an eyepiece adjuster or “diopter.” The purpose of this adjuster is to adjust the view through the camera to suit each individual user’s vision. Because many people’s eyes focus at different depths, what one person may see as a clear image, another may see as fuzzy. The adjuster corrects this problem.

The eyepiece on the Ricoh Super 8 features an eyepiece adjuster. If your eyepiece ever becomes cracked or the focus is no longer working, you may just want to replace it.



### TOOLS:

- [1.0 mm Flathead Screwdriver](#) (1)
  - [Phillips #000 Screwdriver](#) (1)
  - [iFixit Opening Tools](#) (1)
-

## Step 1 — Eyepiece Adjuster



- Remove the rubber covering from the eyepiece by slowly pulling down on the cover from any direction.

## Step 2



- Use Phillips #000 screwdriver to remove the three screws around the eyepiece lens.
- Remove the metal plate from the eyepiece.

### Step 3



- Turn the adjustment ring counter clockwise until it is as close to the lens as it will go.

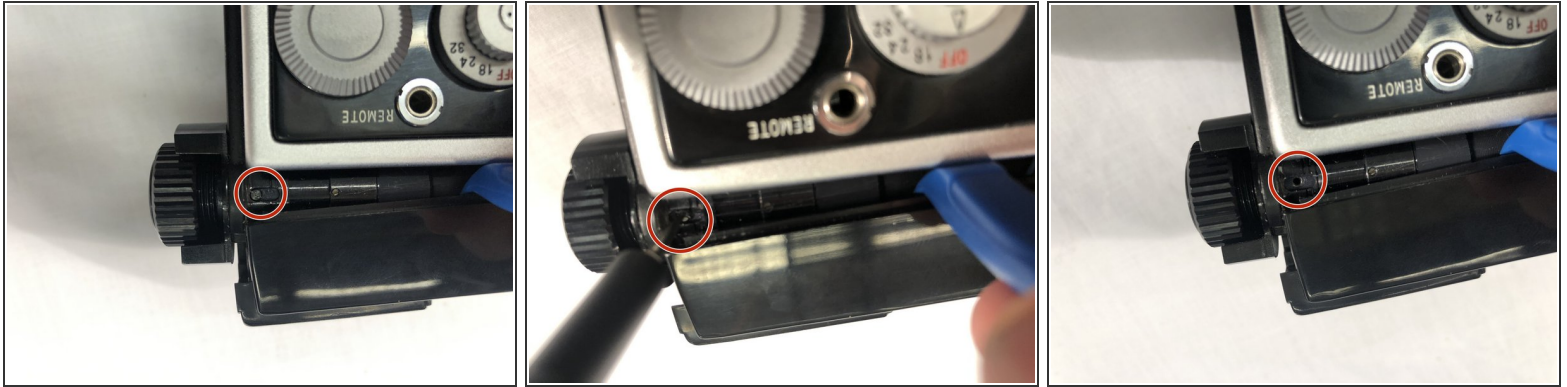
### Step 4



- Remove the screw on top of the back panel of the camera using a Phillips #000 screwdriver.
- Use a plastic opening tool to lift the plastic covering to reveal a screw underneath it.



## Step 5



- Continue to hold the plastic covering back with the plastic opening tool.
- Use a #1 flathead screwdriver to remove screw in the oval opening beside the eyepiece. Be careful not to drop the screw into the camera body.

## Step 6



- Slide the eyepiece adjuster out of the camera body.

To reassemble your device, follow these instructions in reverse order.