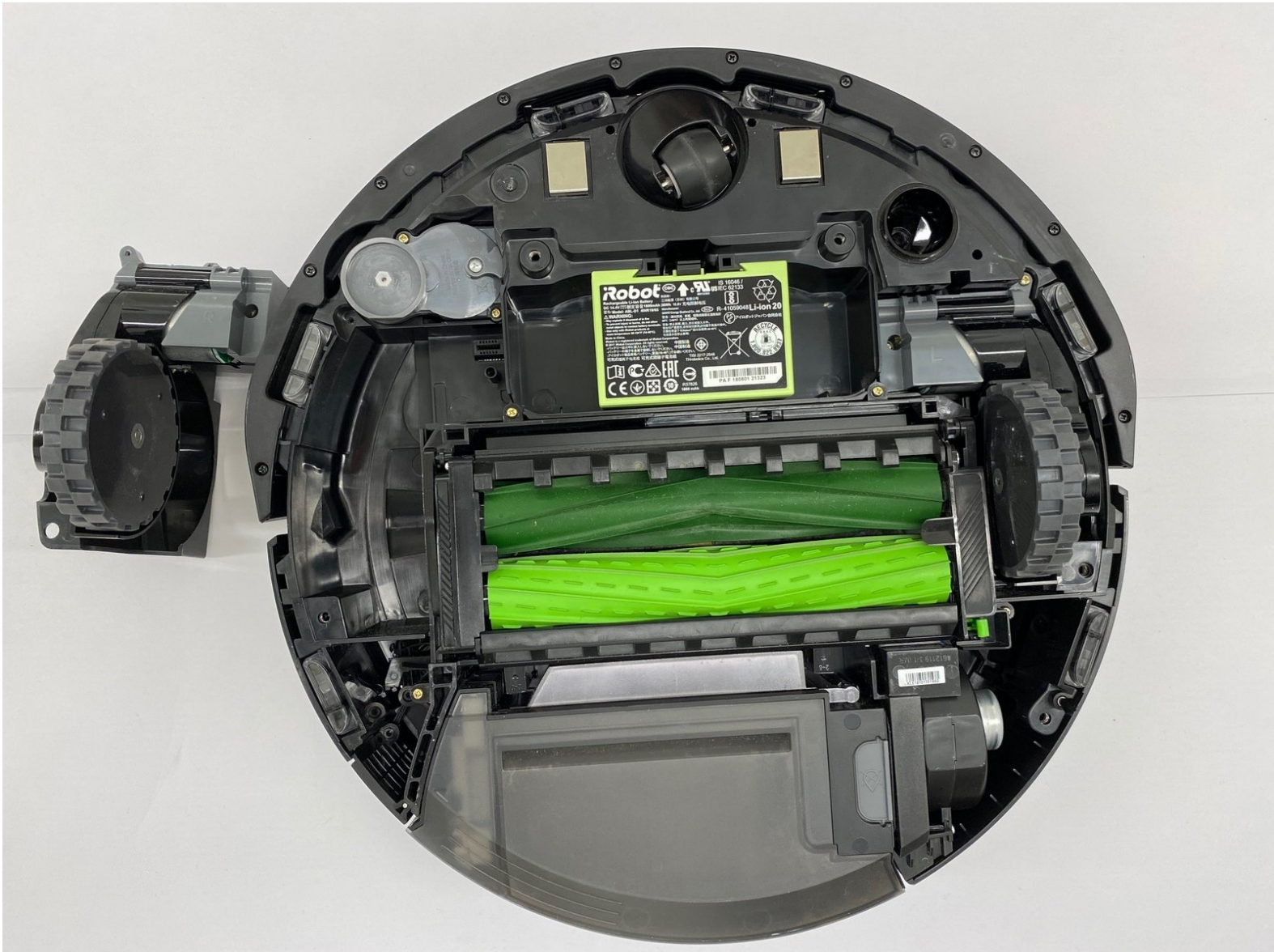




iRobot Roomba i7 Motorized Wheels Replacement

This guide will walk you through how to replace the motorized wheels on your iRobot Roomba i7.

Written By: Bryan Calhoun



INTRODUCTION

Is your iRobot Roomba i7 not moving? Is it moving but constantly turning in circles? Is your device moving much slower than usual? To fix this problem, you will need to replace the motorized wheels on the underside of your Roomba. This guide will help you replace the motorized wheels on your iRobot Roomba i7.

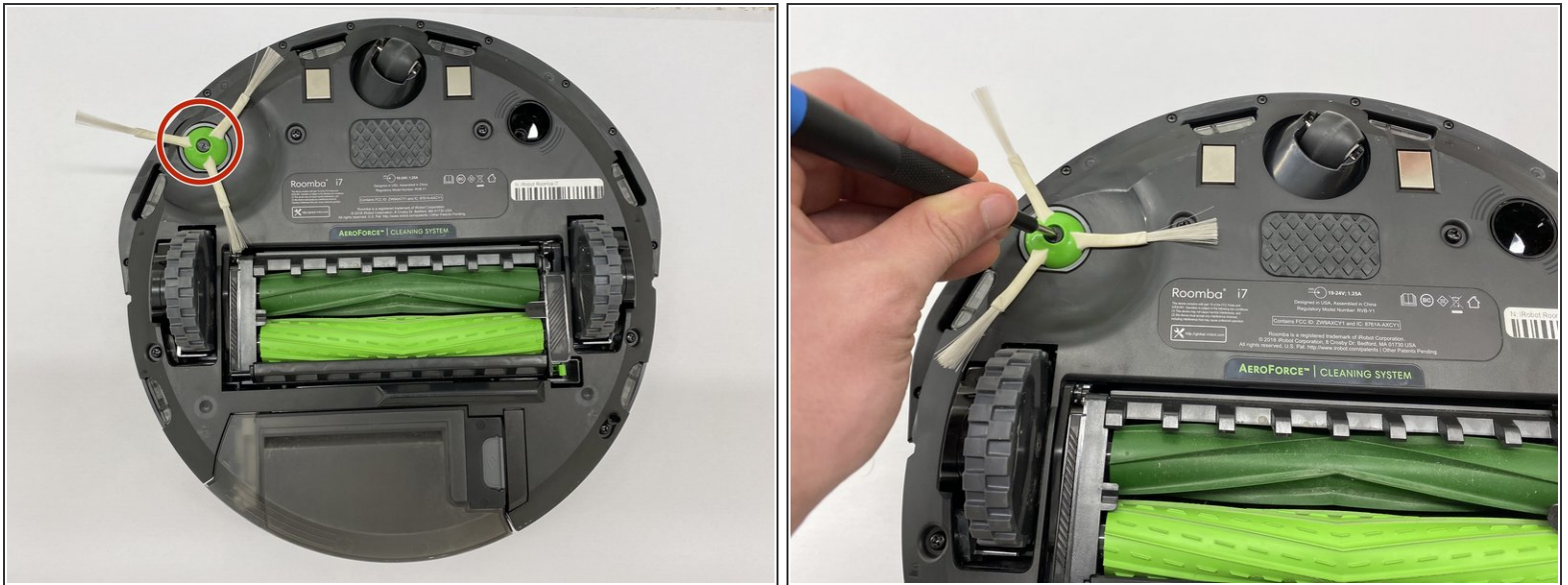
The motorized wheels are located on the underside of the iRobot Roomba i7 on both the left and right side of the dual roller rubber brush system. The purpose of these wheels is to move your Roomba around your home as it cleans.

Before you begin using this guide, make sure that your Roomba is turned off and disconnected from the charging station or Home Base.

TOOLS:

- [Phillips #1 Screwdriver](#) (1)
 - [iFixit Opening Tools](#) (1)
-

Step 1 — Motorized Wheels



⚠ Before you begin using this guide, make sure that your Roomba is turned off, and disconnected from the charging station, or Home Base.

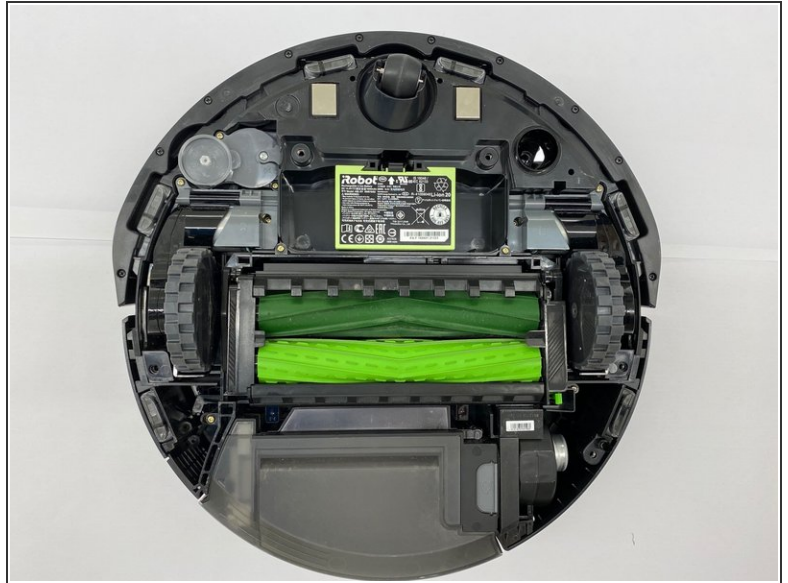
- Flip the iRobot Roomba i7 so that the underside is facing upwards.
- Using the Philips #1 screwdriver, unscrew the 6.27mm-screw in the center of the side brush.

Step 2



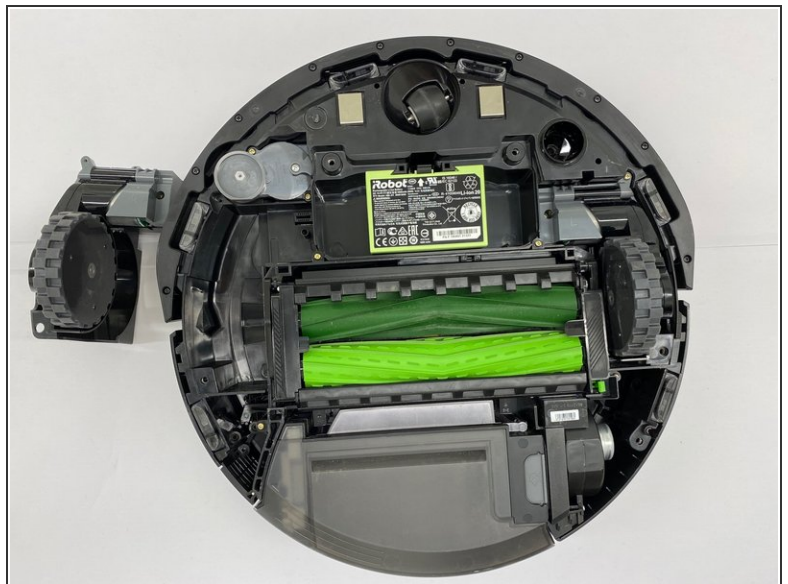
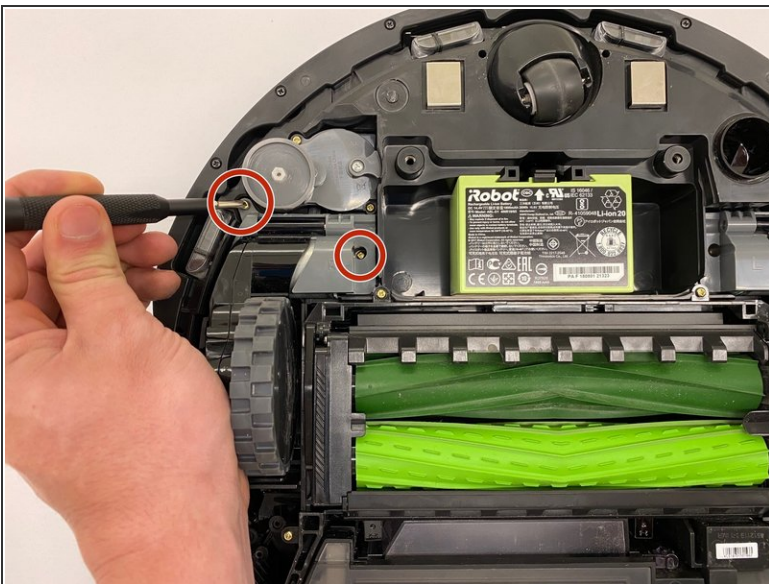
- After unscrewing the side brush screw, gently pull the brush up, as shown in the picture.
- If the side brush is difficult to pull, use a plastic opening tool to take it out.

Step 3



- Use the Phillips #1 screwdriver to unscrew the five 6.24mm screws retaining the underside cover.
- Gently lift the underside cover off of your Roomba, exposing the inside components.

Step 4



- Using a Phillips #1 screwdriver, unscrew the two 4.37mm-screws retaining the motorized wheels.
- Lift the motorized wheel out of the Roomba to be replaced.

To reassemble your device, follow these instructions in reverse order.