



HP Pavilion x360 14m-ba011dx Battery Replacement

Before using this guide, make sure to review...

Written By: Katie Pruis



INTRODUCTION

Before using this guide, make sure to review the [troubleshooting page](#) for the HP Pavilion x360 14m-ba011dx. The battery may not actually need to be replaced depending on the problem, which is why it is good to trouble shoot first.

With this guide, the user will be able to remove and replace the battery of the HP Pavilion x360 14m-ba011dx. The model number for this device is *1KT47UA*. A battery replacement may be needed if your laptop is overheating or you are having difficulties booting the laptop up. The battery itself is only one large cell that is not adhered to any surface.

Make sure to turn off your computer and discharge the battery before starting this guide. By draining the battery before removing it, you reduce the risk of potential fires. "



TOOLS:

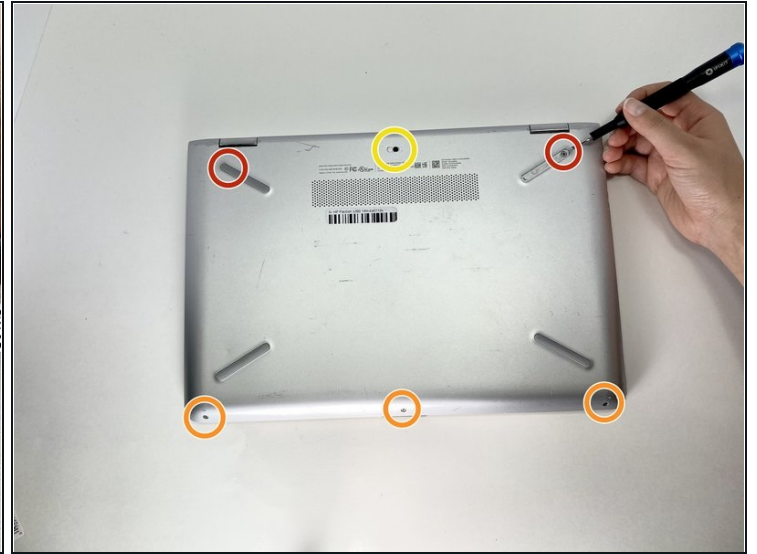
[Phillips #00 Screwdriver](#) (1)
[Spudger](#) (1)



PARTS:

[HP Pavilion x360 14 Battery](#) (1)

Step 1 — Battery



- Remove the top left and right rubber pads closest to the hinge of screen using a plastic spudger to expose the screws underneath.
- Remove the following 6 screws from the bottom of the device using a Phillips #00 Screwdriver:
 - Two 7.5 mm screws.
 - Three 5 mm screws.
 - One 6.5 mm screw.

Step 2

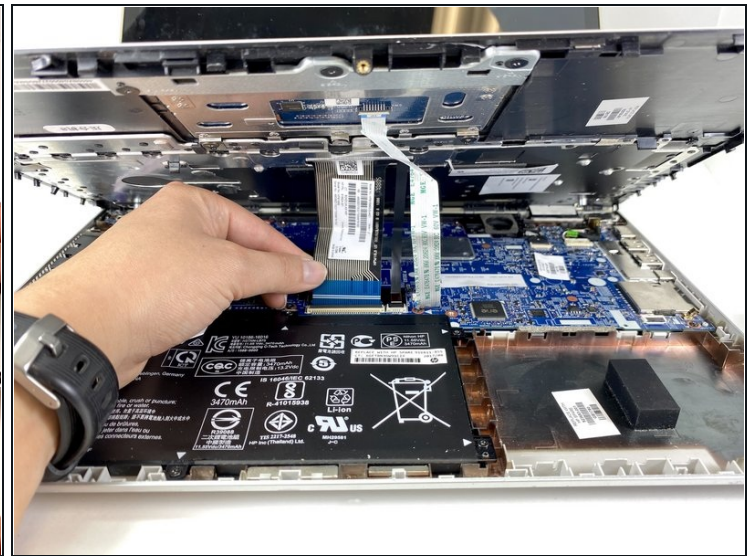


- Push into the two screw holes that were under the rubber pads with the screwdriver to pop the keyboard out just a little.

⚠ Do this with the screen open so that you do not damage the screen.

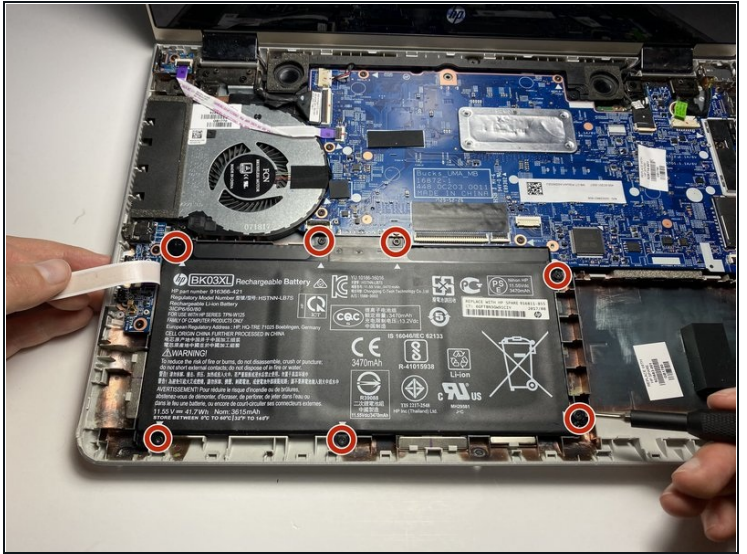
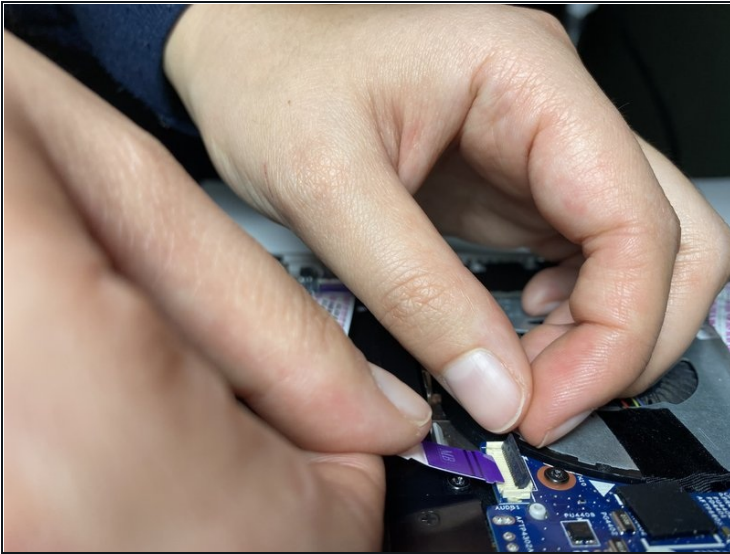
- ⓘ Do not remove keyboard all the way.

Step 3



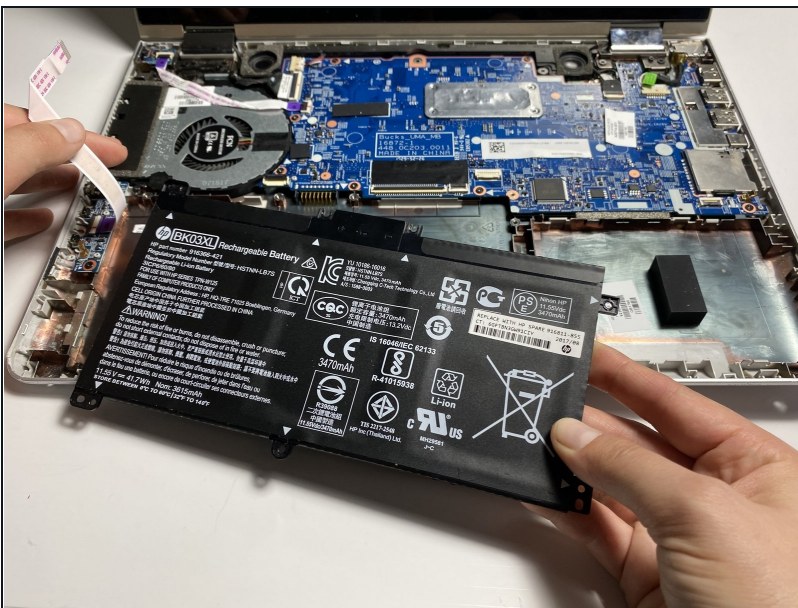
- Separate the keyboard from the rest of the device using a metal or plastic spudger around the edges.
- Pull up gently just until you can see the cables attaching the keyboard to the motherboard.
- Flip the small white flaps holding the cables to the motherboard open to unplug the cords.

Step 4



- Remove the purple cable attaching the battery to the motherboard by flipping the black flap and pulling the cable out.
- Remove seven 4 mm screws using a Phillips #00 Screwdriver.

Step 5



- Remove the battery by gently pushing battery up, then pulling.

To reassemble your device, follow these instructions in reverse order.

