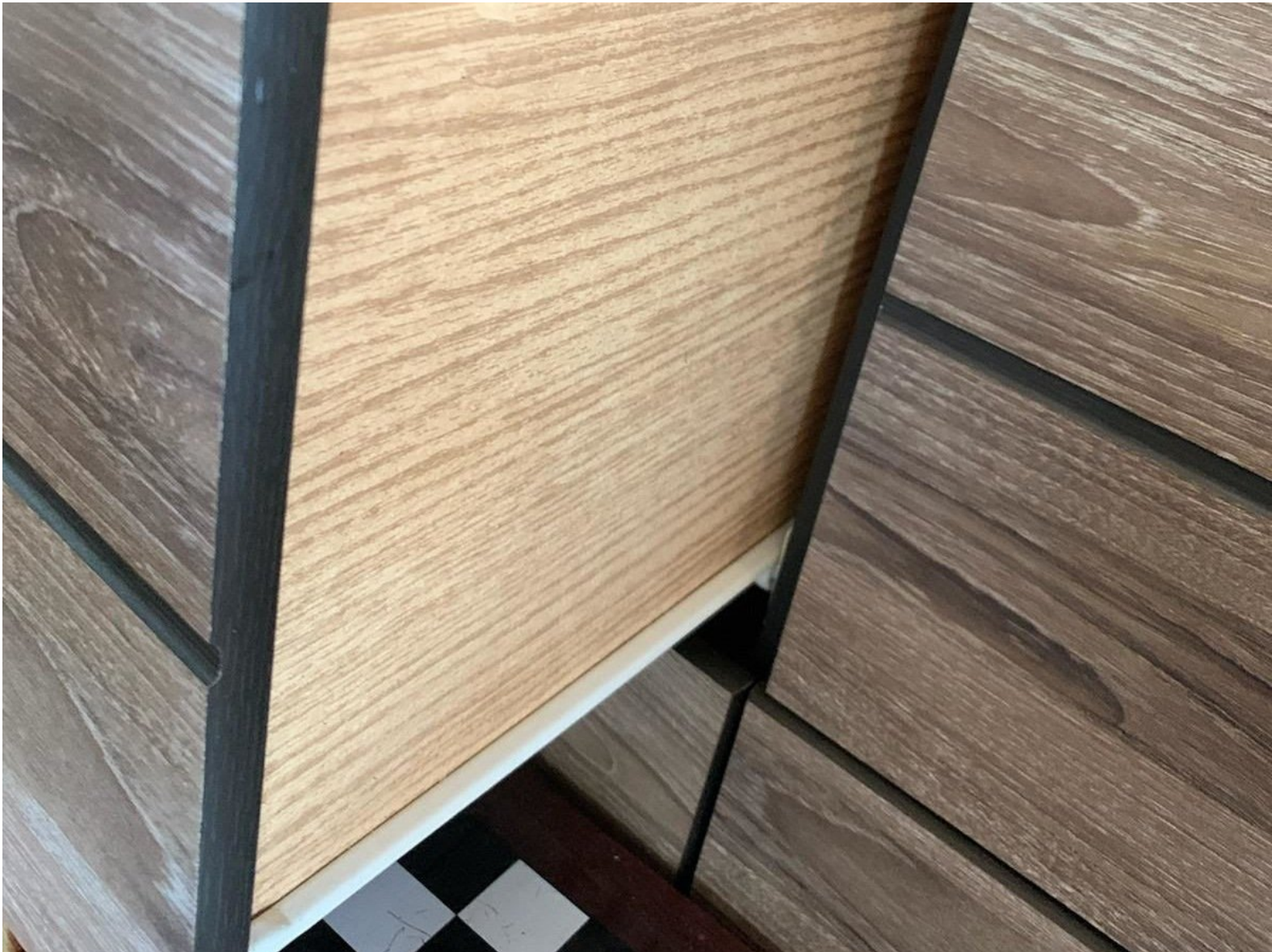




# Drawer Roller Bracket Replacement

This repair will fix roller brackets that do not work, close completely, or are broken.

Written By: Austen Schram



# INTRODUCTION

This project will result in an illustrated how-to guide on fixing a drawer roller bracket that does not close completely. By the end of this fix you will have a drawer that closes flush against the face of the furniture.

---

## TOOLS:

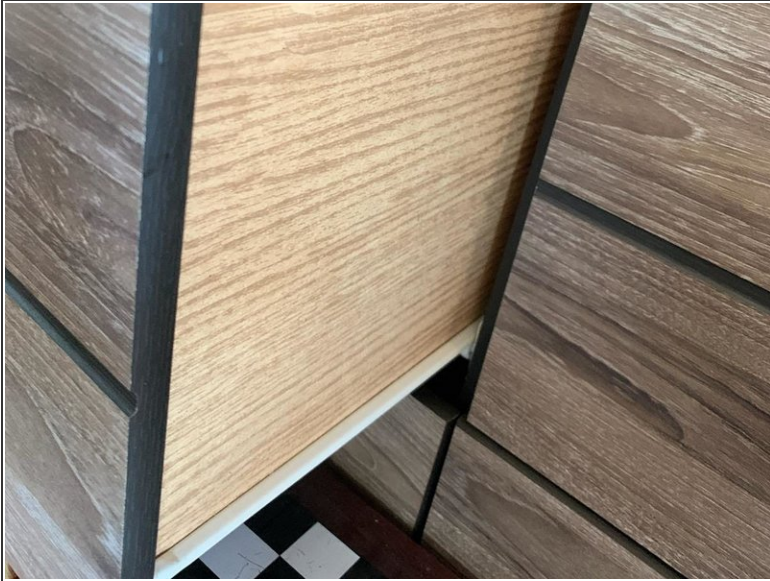
- [Angle Grinder](#) (1)
- [Cordless Drill](#) (1)
- [Hack saw](#) (1)
- [Screws](#) (1)

### Flat Head

- [64 Bit Driver Kit](#) (1)
  - [Tape Measure](#) (1)
  - [Sharpie](#) (1)
  - [Precision Drill Bits Metal](#) (1)
  - [Leather Work Gloves](#) (1)
  - [JB Weld Epoxy](#) (1)
  - [Safety Glasses](#) (1)
-



## Step 1 — Drawer Roller Bracket Replacement



- Clear out drawer of any contents. This will make the drawer easier to handle, with no mess or clutter.
- To remove, pull the drawer completely open.
- Lift the drawer straight up.

## Step 2



- Remove the brackets on the drawer.
- ⓘ Some may have rivets, some may have screws. If there are screws a simple screwdriver will do the trick. If there are rivets use a drill the size of the head of the rivet and proceed to drill the head of the rivet.
- ⚠ When removing rivets with a drill, wear eye protection and be cautious.

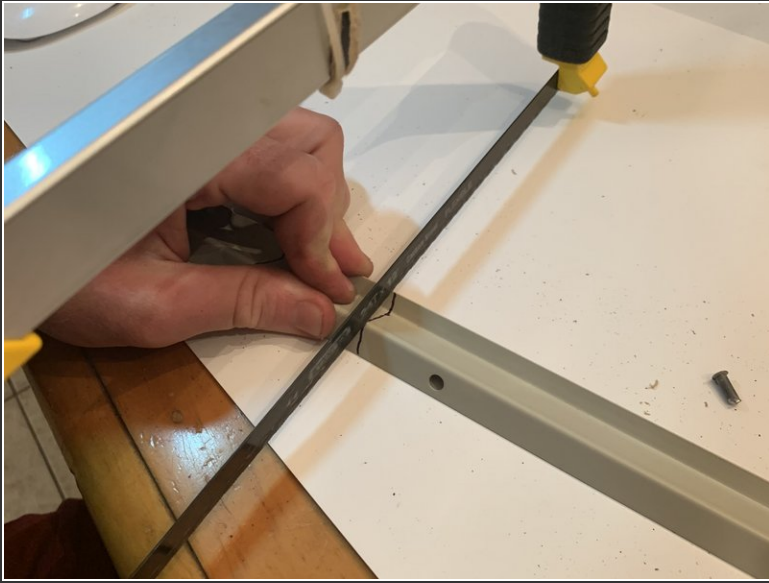
### Step 3



- Measure the length of the internal track to the recessed part in the rear of the track.
- ⓘ This recess will hold the drawer completely closed when the wheel on the bracket reaches it.
- Then measure the amount of bracket that needs to be removed. In our case, 2 inches will need to be removed.

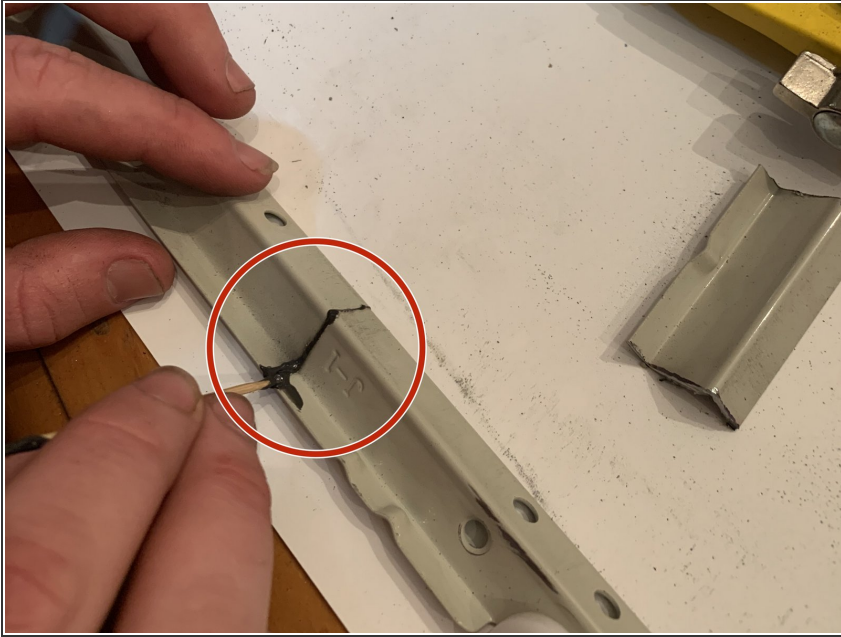


## Step 4



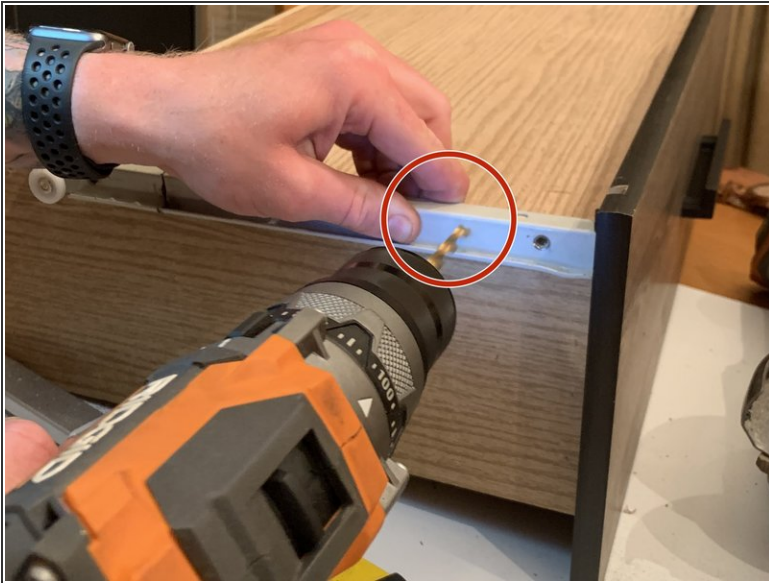
- Remove the excess bracket. Make sure to remove parts of the bracket that do not contain holes. These holes are used for fasteners.
  - To cut a section, make sure you make perfectly vertical cuts for the remaining pieces to line up. To assure a straight line to cut, use a sharpie marker to mark a straight line.
  - ⓘ Use a reciprocating power saw or a grinder with cutting wheel. I used a grinder because I found it to be easier.
- ⚠ Maintain eye protection, and gloves if necessary.

## Step 5



- Apply JB Kwikweld to the remaining pieces of bracket. Mix equal parts of the mixture.
- Discard the removed piece from last step.
- ⓘ When applying JB weld, use a small amount, I used a toothpick as an applicator.
- ⓘ Set time was roughly 6 minutes for the weld mixture to set.
- ★ Before adding weight to the drawer, allow the weld to fully cure. This will take 4-6 hours.

## Step 6



- Use a drill with a drill bit to make necessary holes for screws to sit and fasten the bracket. Use a drill bit slightly larger than shaft of screws, but smaller than the head of the screws.
  - ⓘ I used a 3/32 drill bit.
- Install new fastener screws to the bracket.
  - ⓘ My build required 12 **#6x1/2inch Philips screws**. I used three screws on each end of the brackets and six screws on each end of the bracket.
  - ⓘ The more screws used, the stronger the bracket is secured. (Two on the bottom of the bracket, and one on the inside of the track.)
  - ⓘ If possible, use preexisting holes, and screws.
  - ⓘ Sometimes screws protrude too far, you may have to grind the head of the screw slightly so it protrudes less.



## Step 7



- Make sure the bracket is fastened securely, make any necessary adjustments.
- ★ You may need to grind down some of the JB Weld if too much was applied. Simply used a file or grinder.

## Step 8



- Insert wheels on both sides of the drawer bracket into the opening behind the wheel on the track located in the furniture.
- Close the drawer and make sure it opens and closes functionally.

To reassemble your device, follow these instructions in reverse order.