

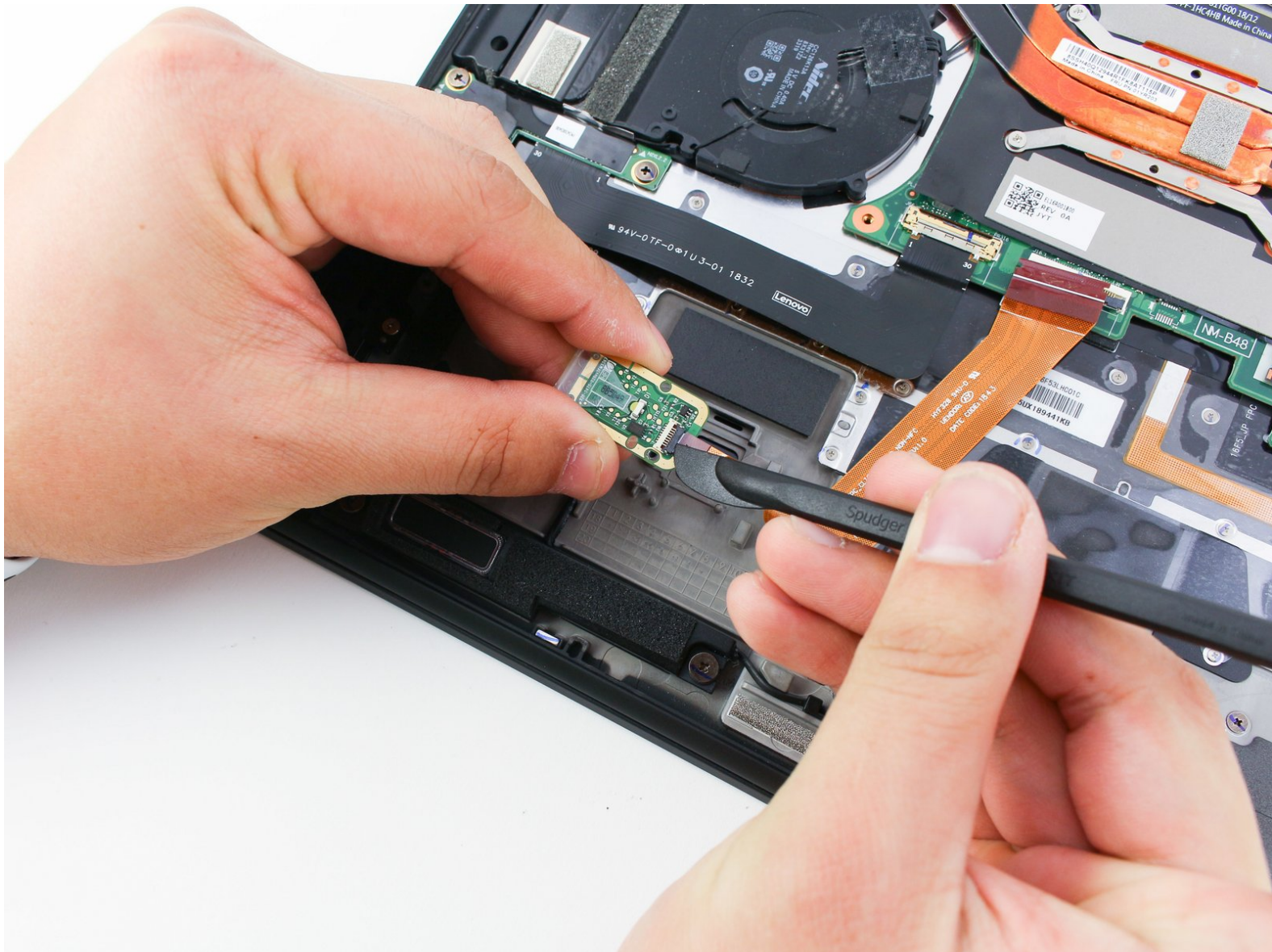


Lenovo ThinkPad X1 Carbon 6th Gen

Fingerprint Scanner Replacement

This guide details how to replace the fingerprint scanners in a Lenovo ThinkPad X1 Carbon 6th Gen.

Written By: Michael Megna



INTRODUCTION

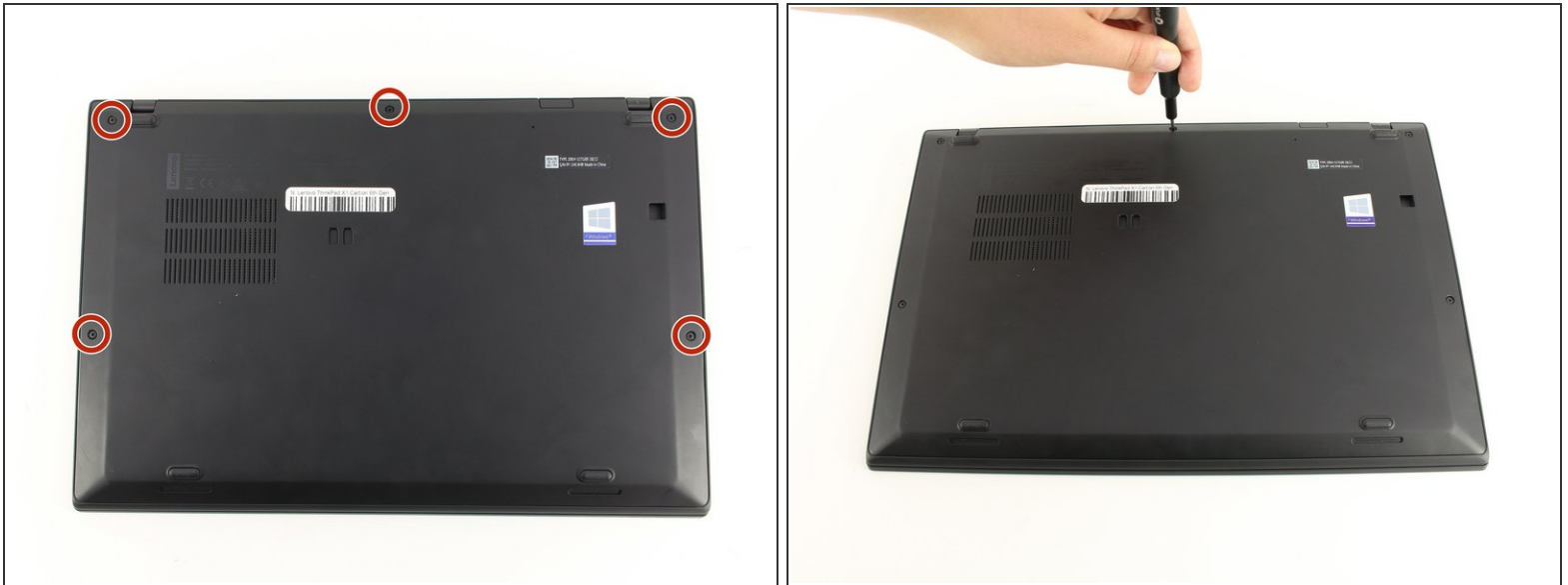
In this guide, you will learn how to replace the fingerprint scanner in a Lenovo ThinkPad X1 Carbon 6th Gen. This may be necessary if your scanner is no longer reading your fingerprint. Before replacing your fingerprint scanner, try updating or reinstalling the [fingerprint scanner drivers](#) first. Be sure to power off your device and disconnect it from any power source before beginning.



TOOLS:

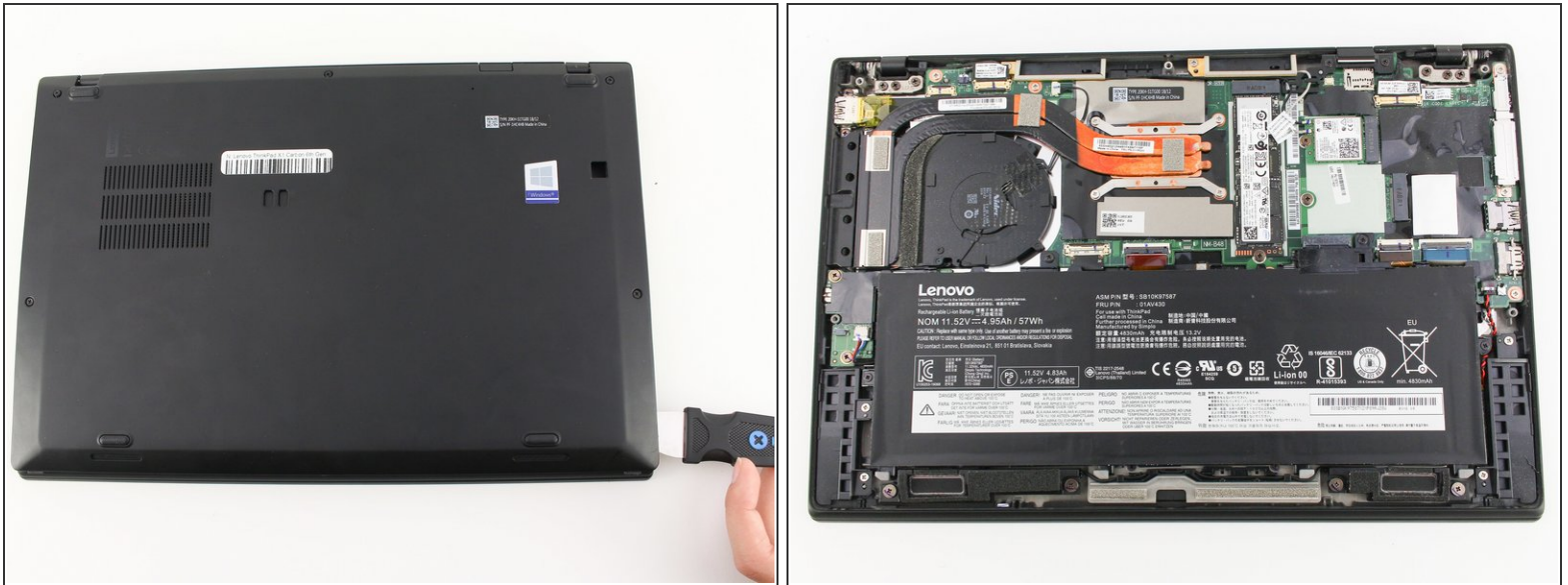
- [Phillips #0 Screwdriver](#) (1)
 - [iFixit Opening Tools](#) (1)
 - [Spudger](#) (1)
-

Step 1 — Back Cover



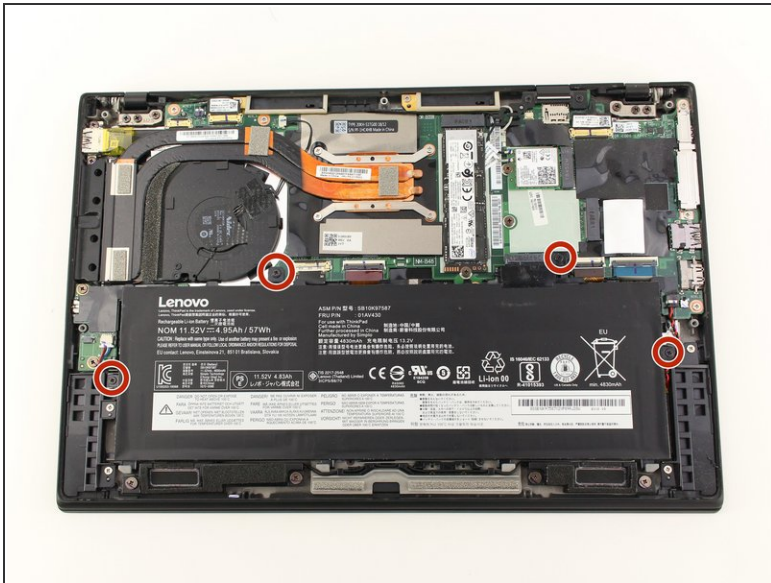
- Use a Phillips #0 screwdriver to unscrew the five screws that secure the back cover to the laptop.
- ⓘ The screws do not completely come off from the back cover. Loosen until the screws are completely loose.

Step 2



- Use a Jimmy to lift the cover directly up off of the locating pins.
- ⓘ Though a metal opening tool is shown in the image, we recommend using plastic opening tools to minimize any cosmetic damage.
- Remove the back cover.
- ⓘ If you encounter resistance when lifting the cover, revisit the screws to see if any of them are still threaded on to the device.

Step 3 — Battery



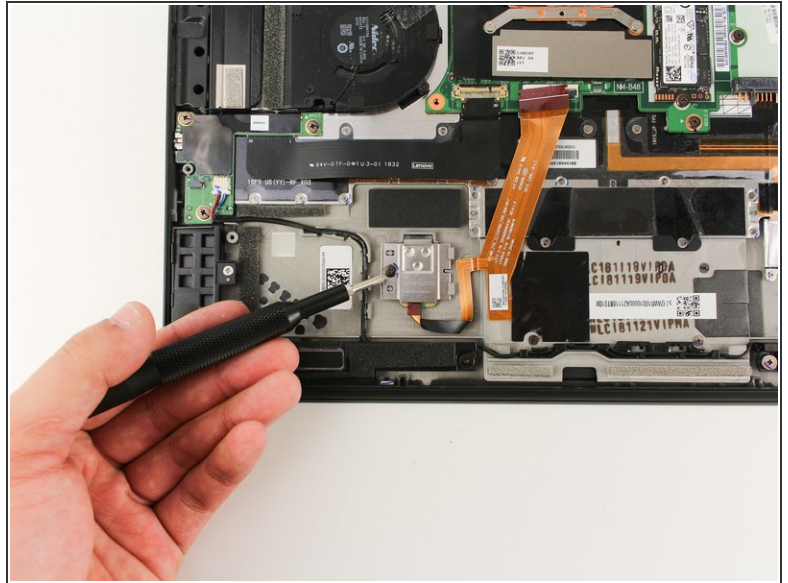
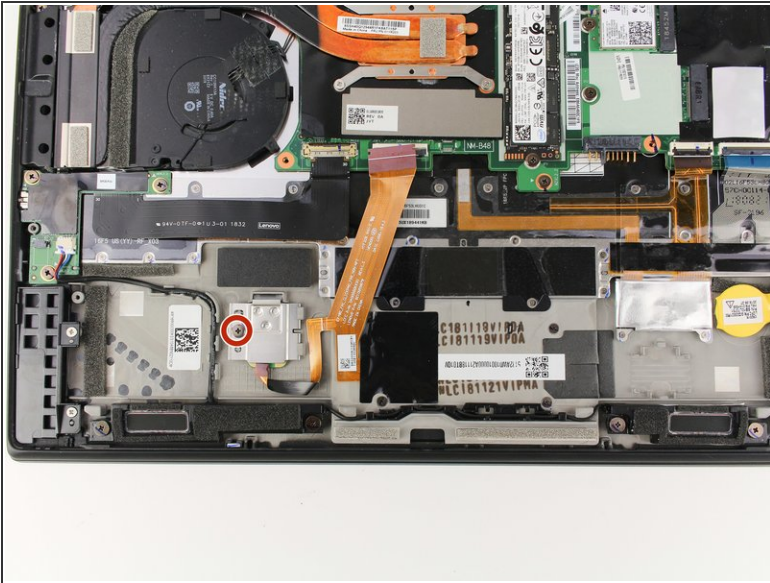
- Use the Phillips #0 screwdriver to remove the four 5 mm screws that secure the battery to the laptop frame.

Step 4



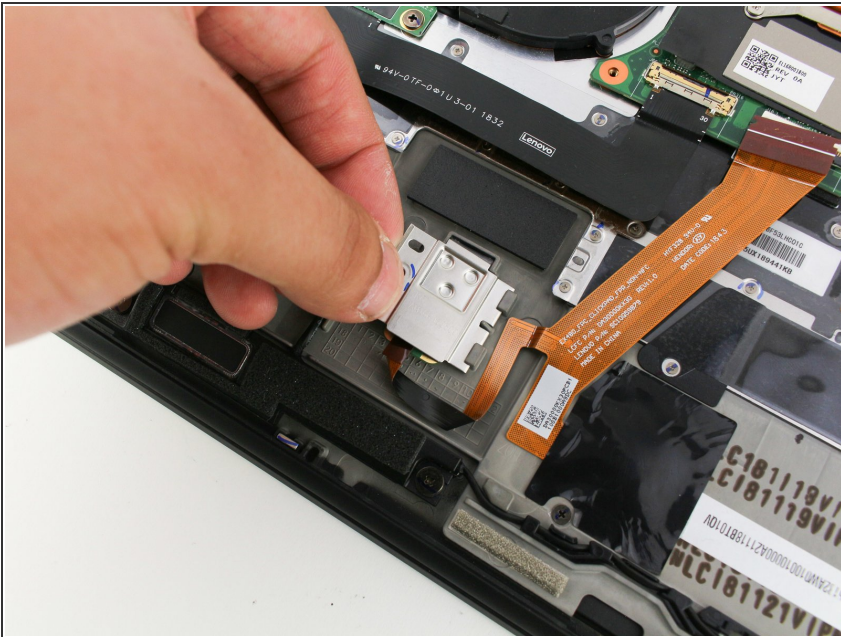
- Take out the battery by lifting it from the bottom edge of the laptop, and then pulling away from the motherboard.

Step 5 — Fingerprint Scanner



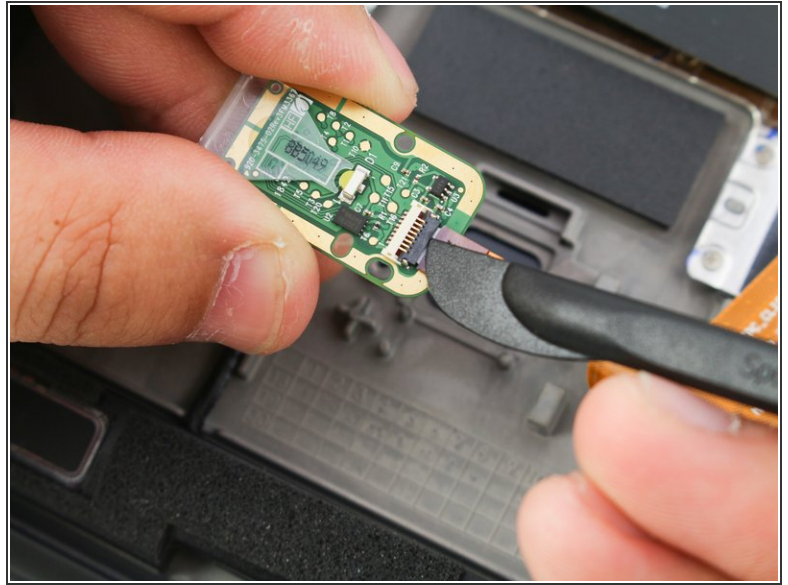
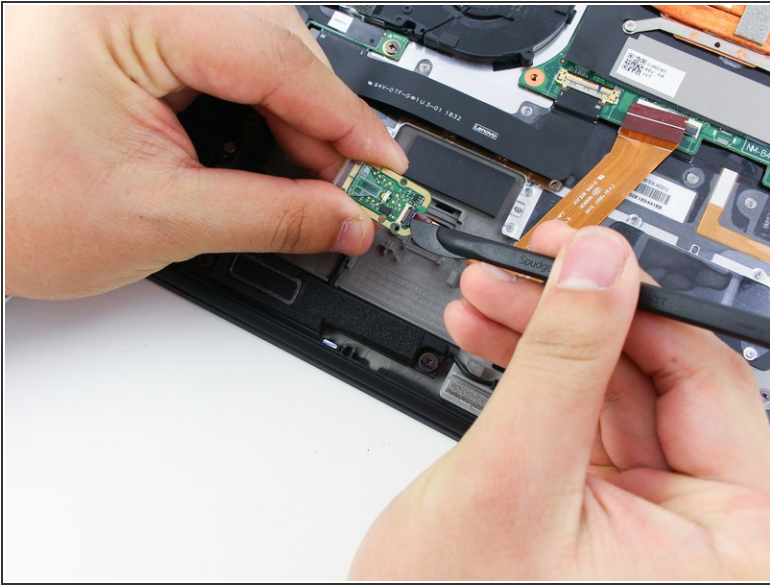
- Use the Phillips #0 screwdriver to remove the 2mm screw that secures the cover of the fingerprint scanner.

Step 6



- Remove the cover by grabbing it and gently pulling up and to the left.

Step 7



- Use a nylon spudger to lift up the black bar that secures the cable.
- Disconnect the ribbon cable from the fingerprint scanner by pulling the cable directly out.

To reassemble your device, follow these instructions in reverse order.