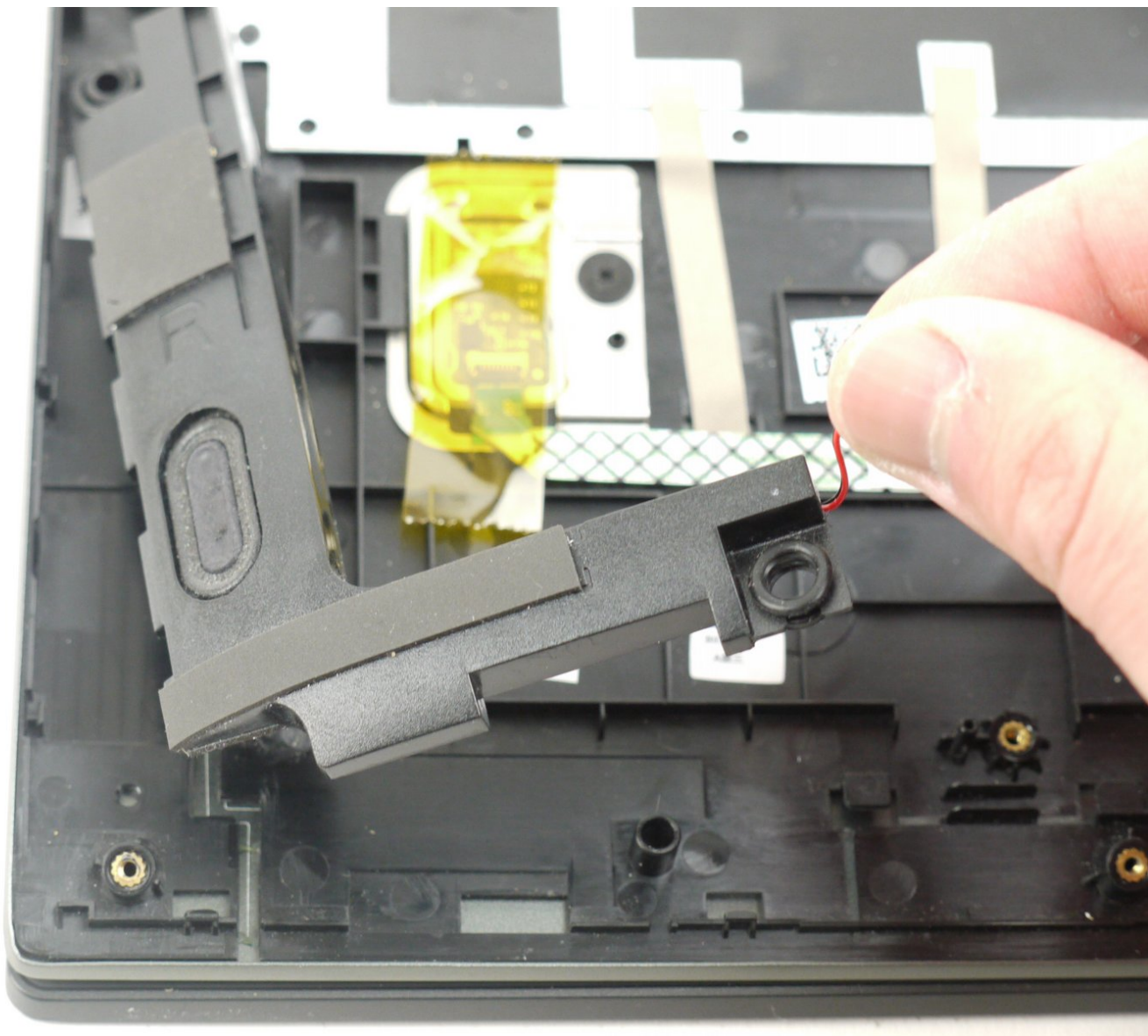




Lenovo IdeaPad Flex 5-1570 Speaker Replacement

A faulty speaker in the Lenovo IdeaPad Flex 5-1570 can result in poor/no audio output. This guide will show you how to successfully replace the speaker.

Written By: Nate Blake



INTRODUCTION

The speakers of any laptop are essential for listening to music, watching videos, etc. Faulty or broken speakers can be extremely frustrating. Your Lenovo IdeaPad Flex 5-1570's speakers may not be working properly because of a hardware issue and if that is the case, check out this device's [troubleshooting page](#) to see if you can fix the issue without replacement.

The speakers may also be having software problems, and if that is the case then a replacement is necessary. Luckily, replacing your speakers is straight-forward and does not require many tools or experience working with devices.

TOOLS:

- [Spudger](#) (1)
 - [Phillips #00 Screwdriver](#) (1)
 - [iFixit Opening Tools](#) (1)
 - [Nylon Tipped Tweezers](#) (1)
-

Step 1 — Back Panel



- Remove the ten 5 mm Phillips #00 screws that are holding the back panel on.

Step 2



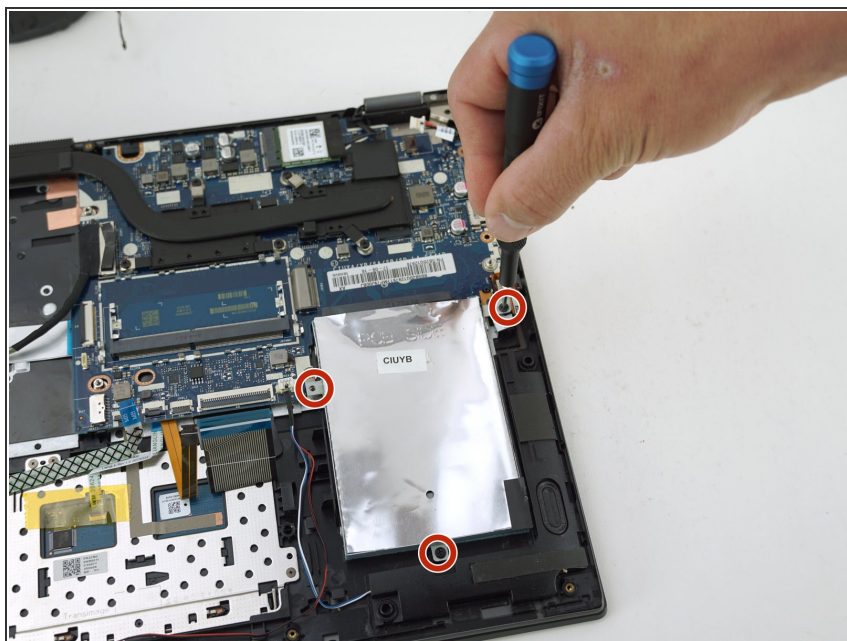
- Use a spudger to pry open the back case at the two hinge cutouts.
- Gently use the plastic opening tool around the edges of the laptop to pry up the clips holding the rest of the back panel.

Step 3



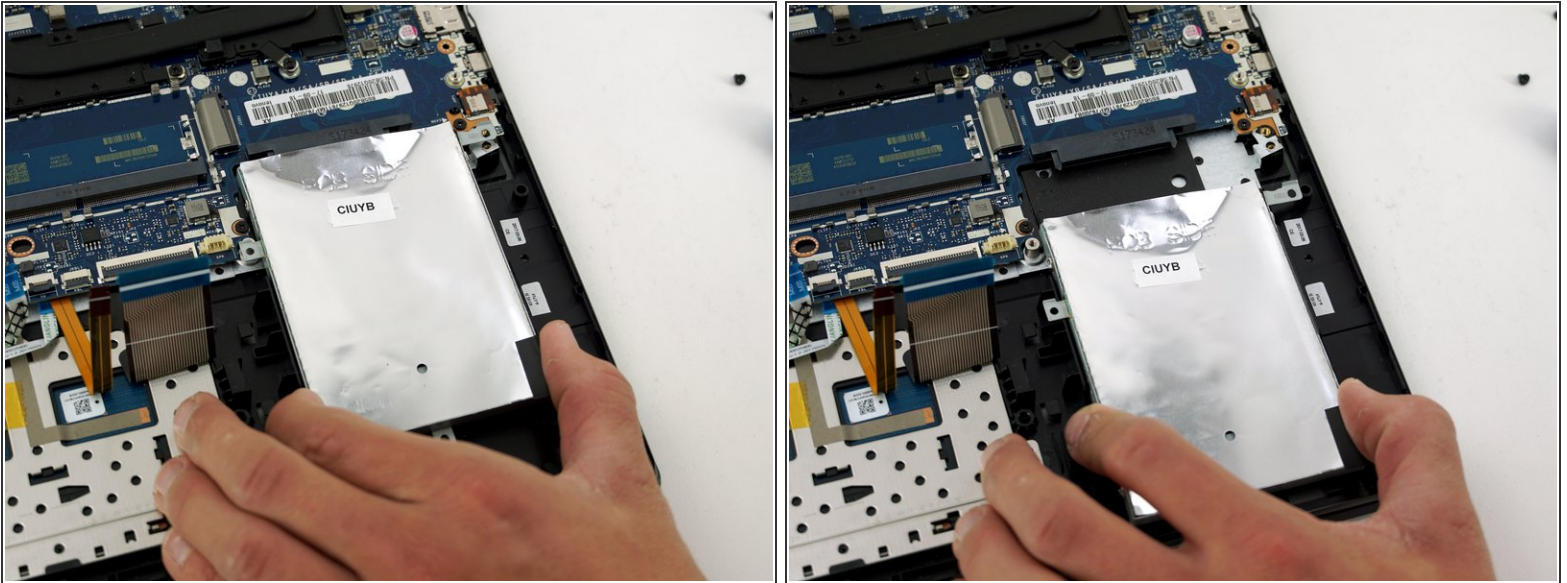
- Once all the clips have been disengaged, lift off the back cover.

Step 4 — Hard Drive



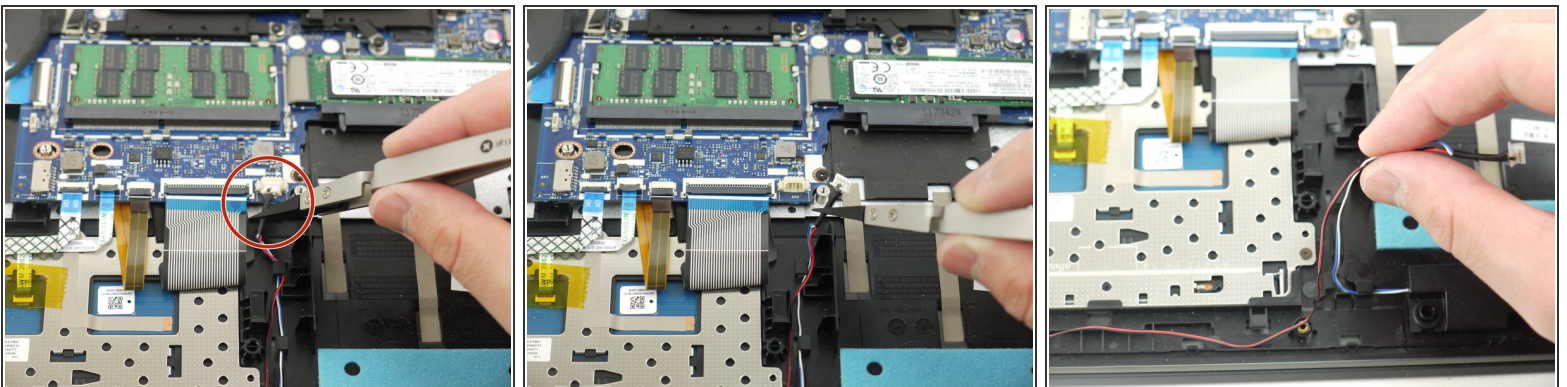
- Remove the three 5 mm Phillips #00 screws that secure the hard drive.

Step 5



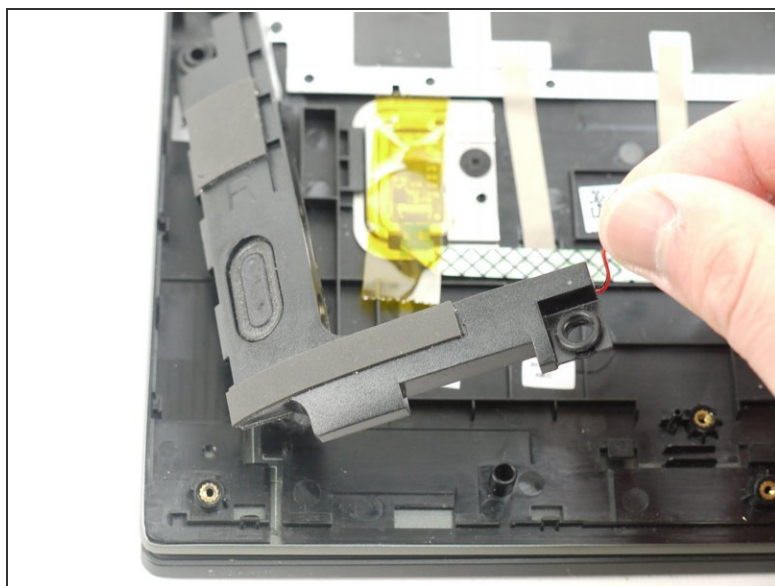
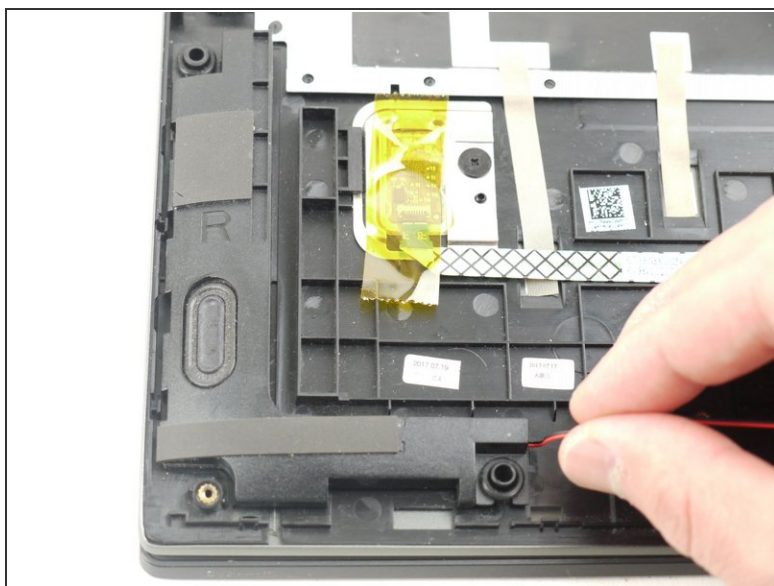
- Using your hands, gently pull the hard drive back, sliding it out from the port.

Step 6 — Speakers



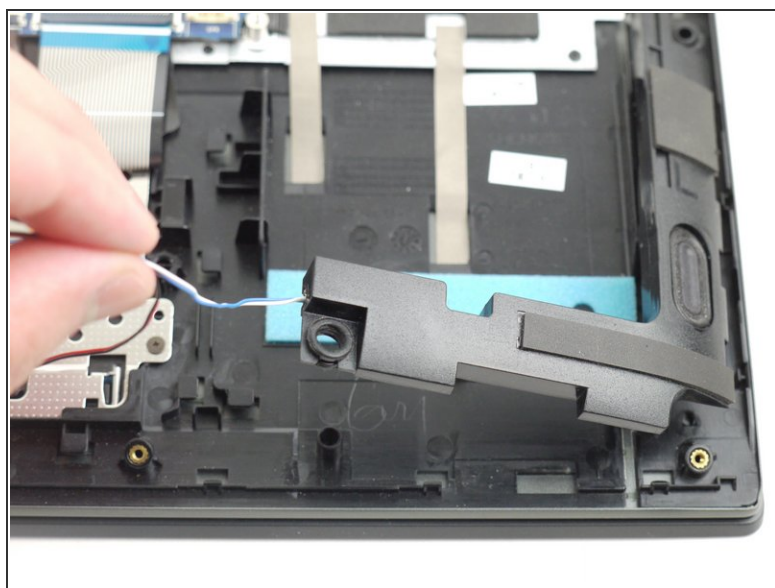
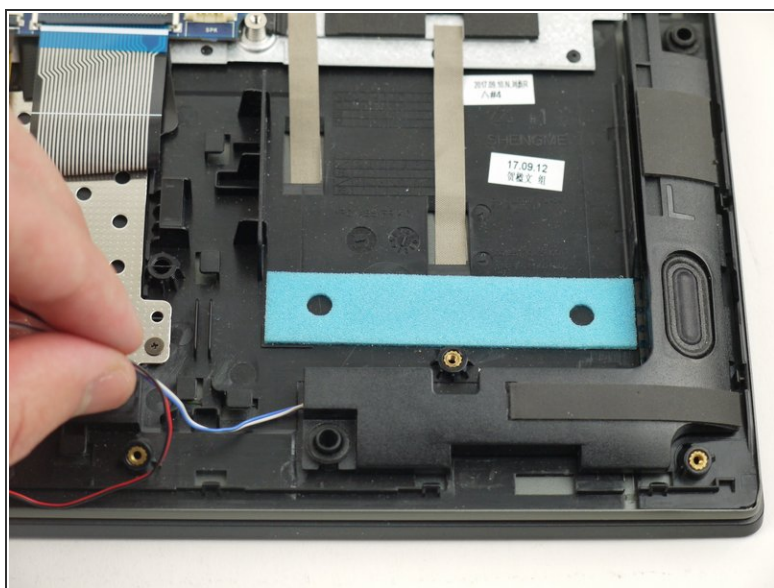
- Using the iFixit nylon tipped tweezers, disconnect the wire that connects the speakers to the motherboard.

Step 7



- Using your hands, gently pull the left speaker up and out of the device.

Step 8



- Repeat the previous step for the other speaker and remove the speakers from the device.

To reassemble your device, follow these instructions in reverse order.

Take your e-waste to an [R2 or e-Stewards certified recycler](#).