



NETGEAR WGT624 v3 Power Supply Replacement

This guide will instruct how to install the...

Written By: Nicole Slagle



INTRODUCTION

This guide will instruct how to install the power supply.

TOOLS:

Desoldering Braid (1)
Phillips #0 Screwdriver (1)
iFixit Opening Tool (1)
Lead-Free Solder (1)
Soldering Workstation (1)
TR8 Torx Security Screwdriver (1)
Tweezers (1)

Step 1 — Lower Case



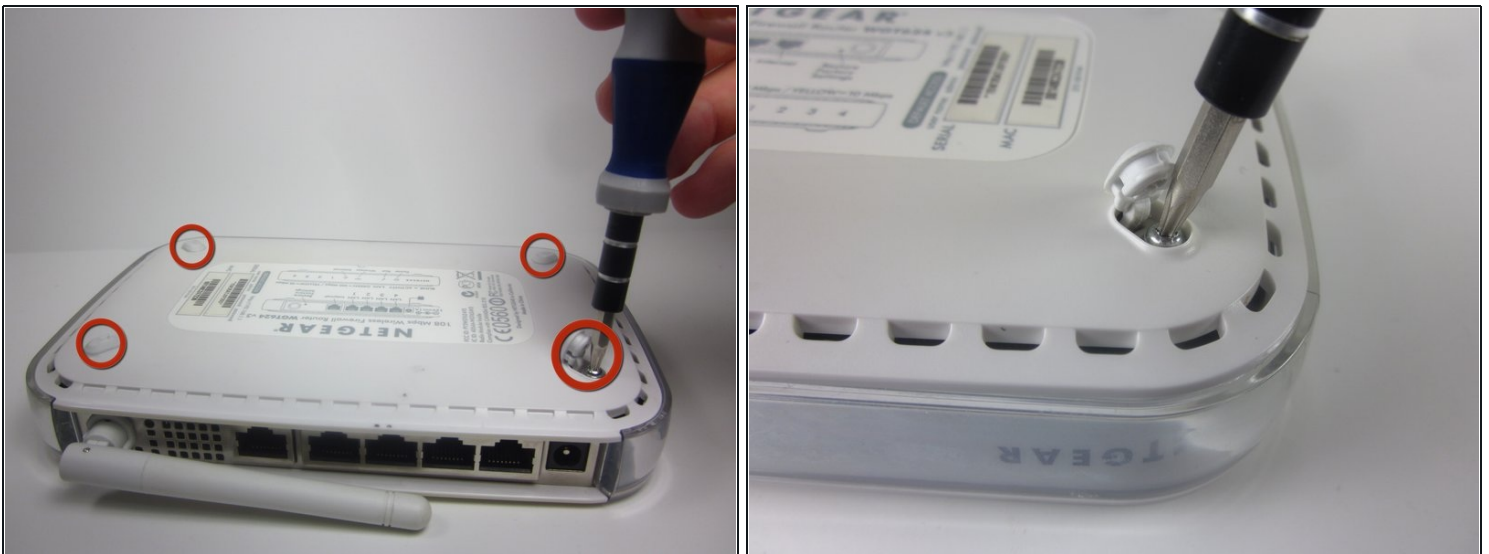
- Turn the device so that the bottom is facing up.

Step 2



- Use the plastic opening tool to carefully lift the rubber stops in each corner.
- ⓘ Do not completely remove the rubber stops, because they are difficult to replace.

Step 3



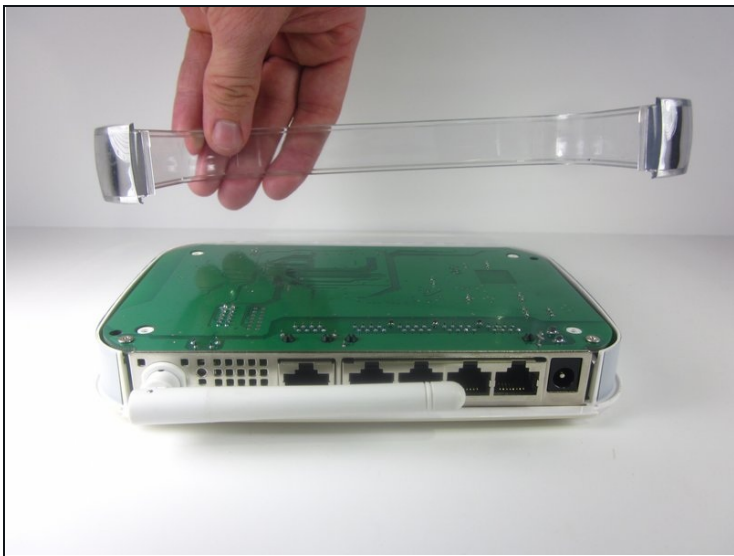
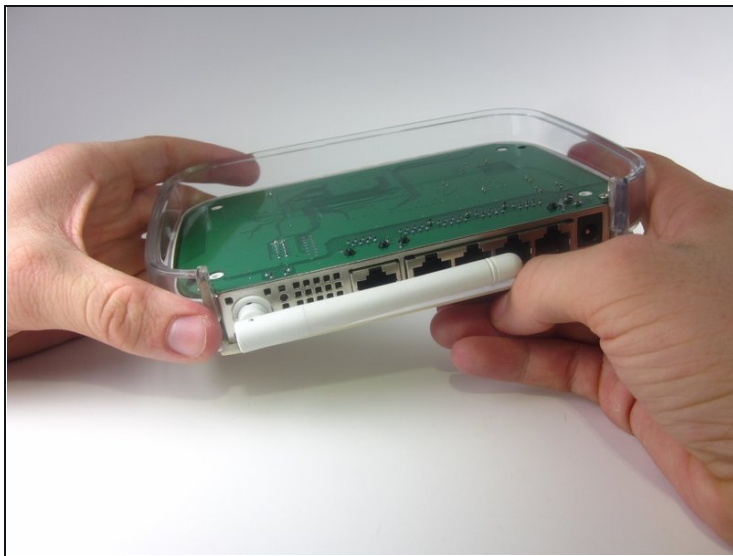
- Unscrew the 4 11.8 mm T-8 Torx screws from each corner of the device.

Step 4



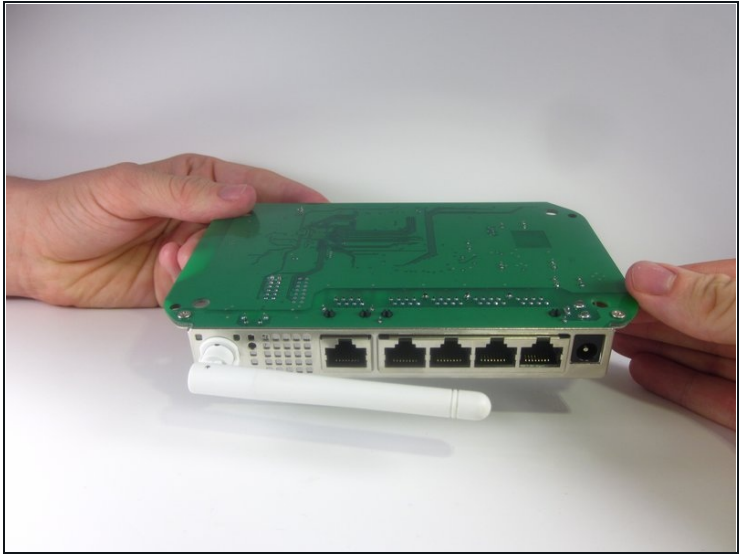
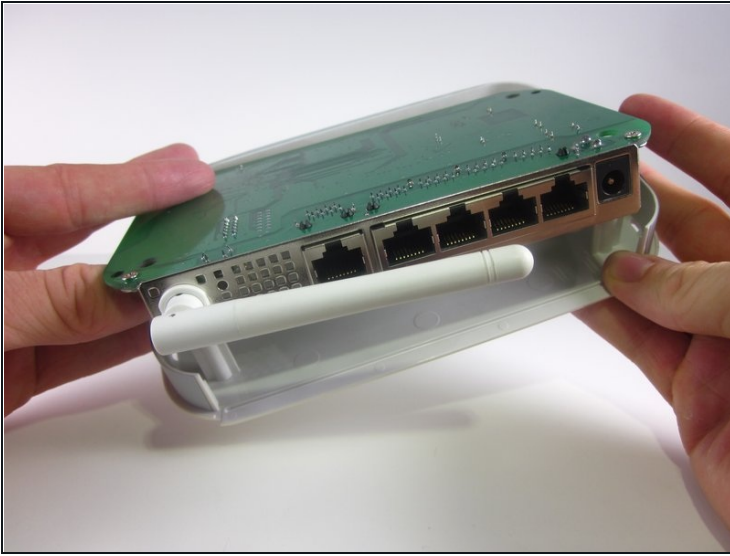
- Lift the lower case straight up from the rest of the router.

Step 5 — Motherboard



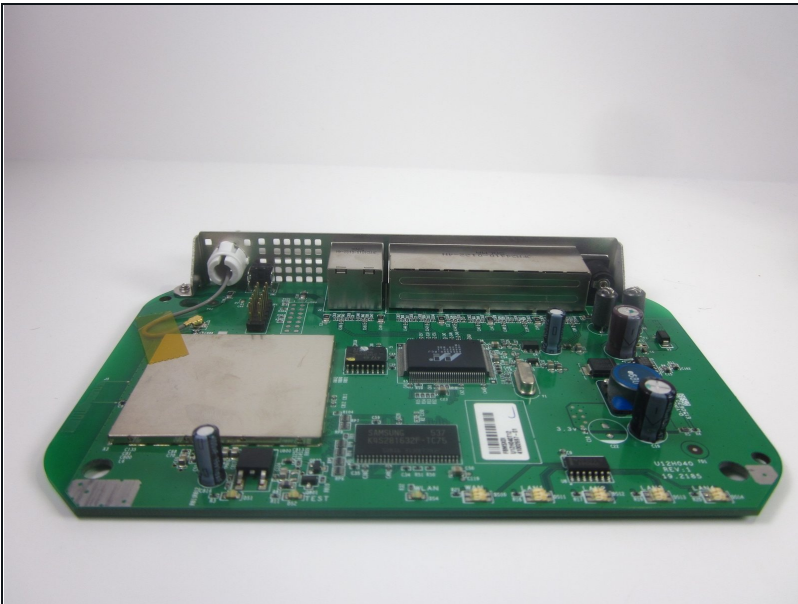
- Remove the clear plastic casing by lifting it straight up from the router.

Step 6



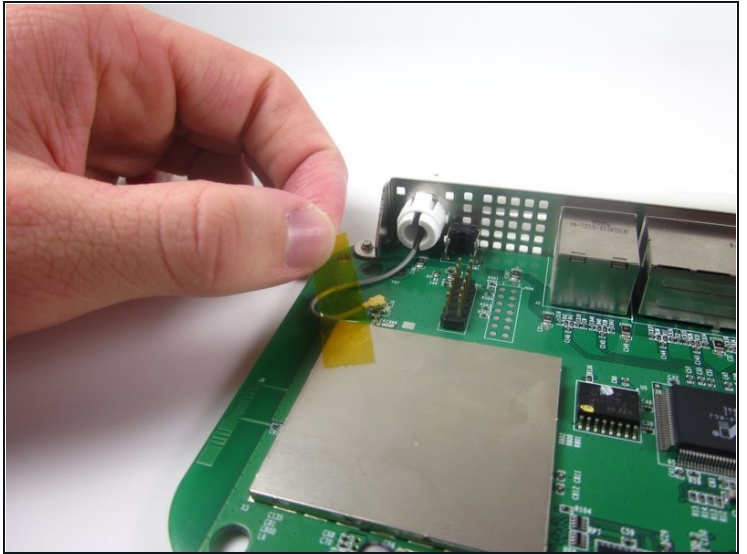
- Separate the motherboard from the top shell by lifting it straight up from the router.

Step 7 — Antenna



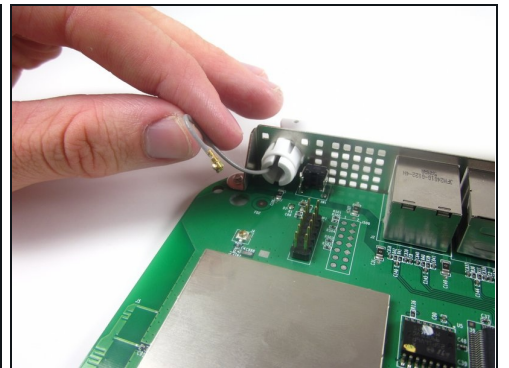
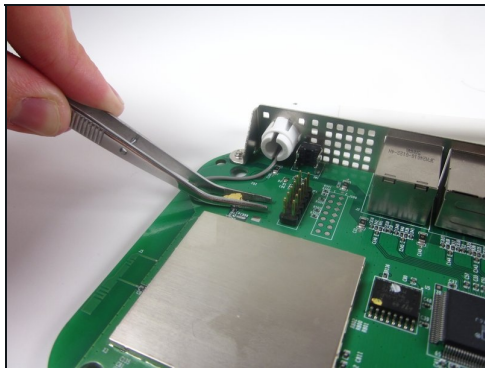
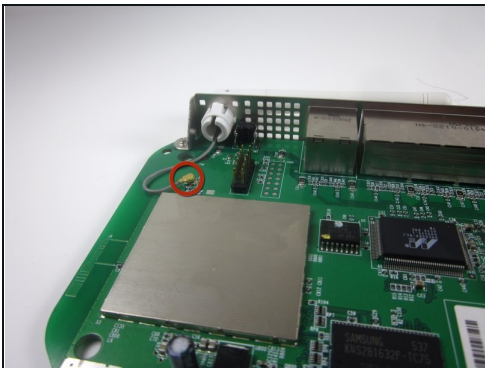
- ① Turn the motherboard, so that the top is facing upwards.
- Place the motherboard on a clean flat surface.

Step 8



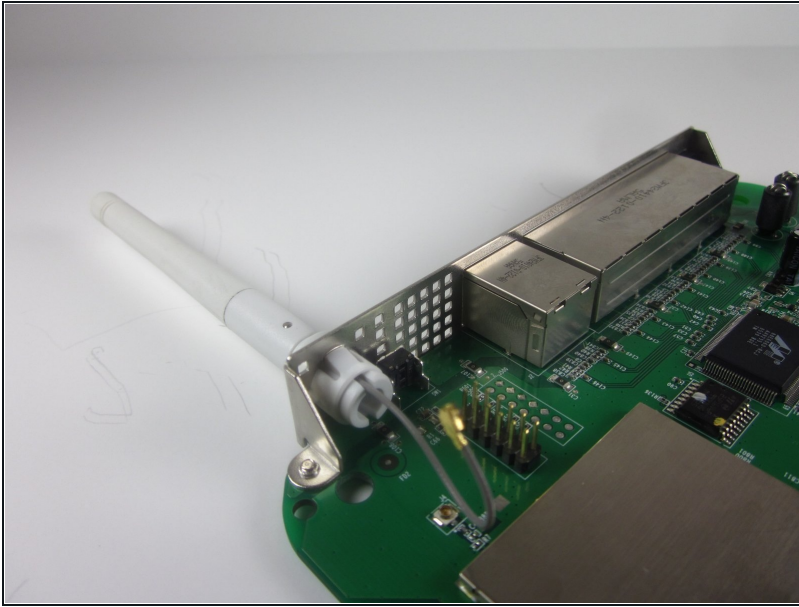
- Remove the yellow tape that holds the wire.
- ① Make sure that you set the tape aside on a clean surface, so that it can be reused.

Step 9



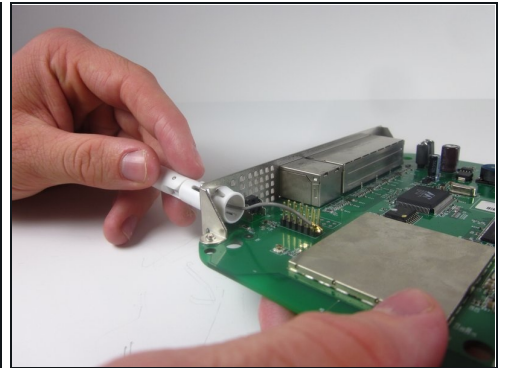
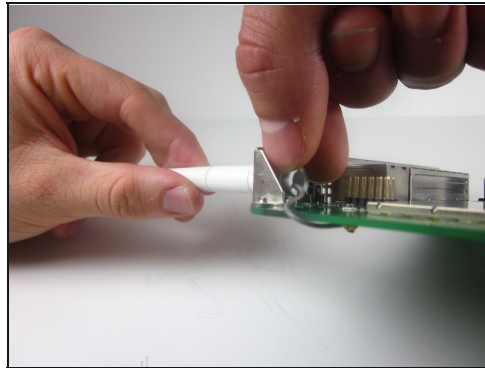
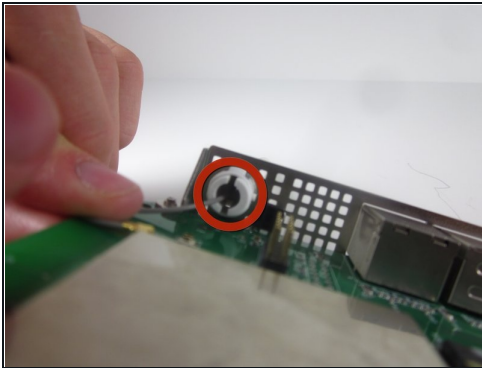
- Use [tweezers](#) to gently pull the metal bracket that connects the antenna to the motherboard.
- ① The wire should now be completely separate from the motherboard.

Step 10



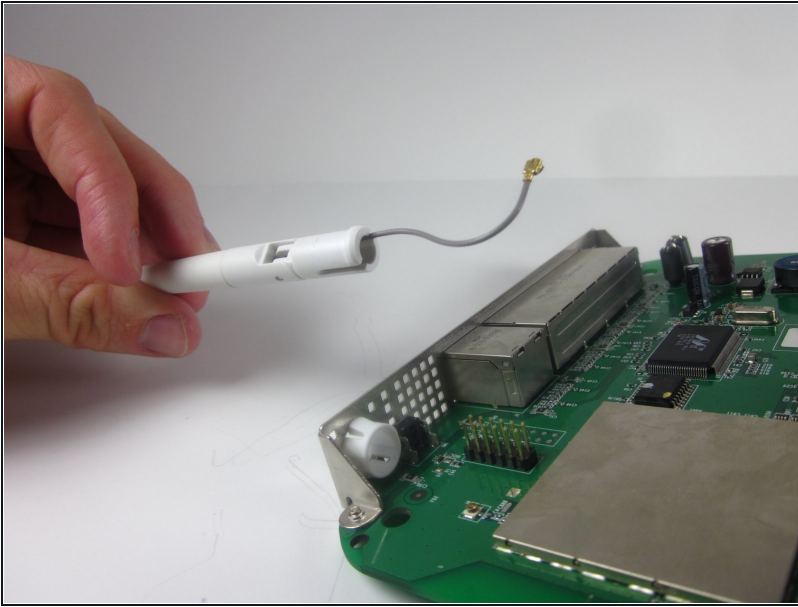
- Extend the antenna away from the device, so that it becomes straight.

Step 11



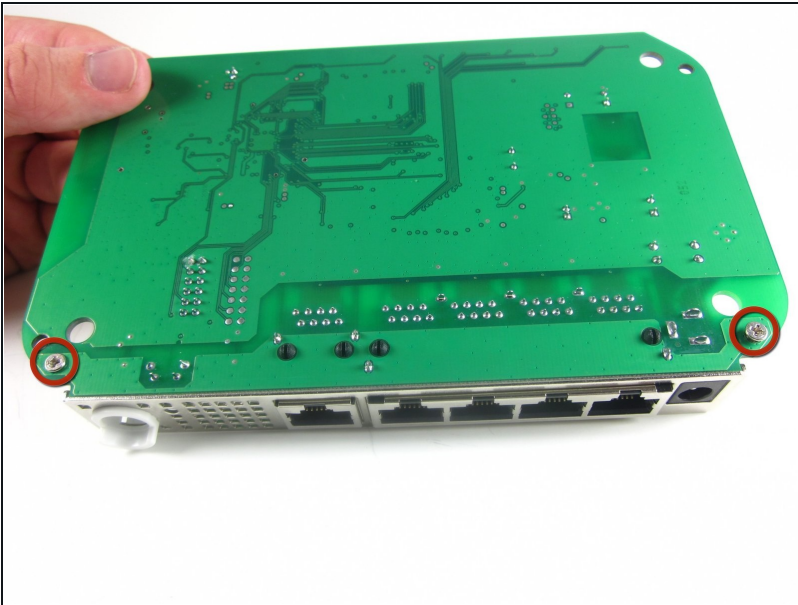
- Find the clips that hold the antenna onto the router.
- Use one hand to push the clips in, while using your other hand to pull out the antenna. You may need to gently twist the antenna so it can separate from the hole.
- The antenna may take considerable force to remove.

Step 12



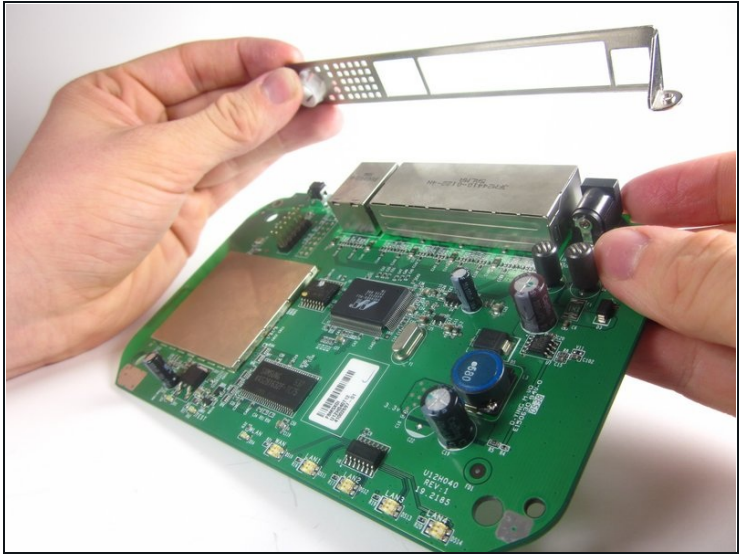
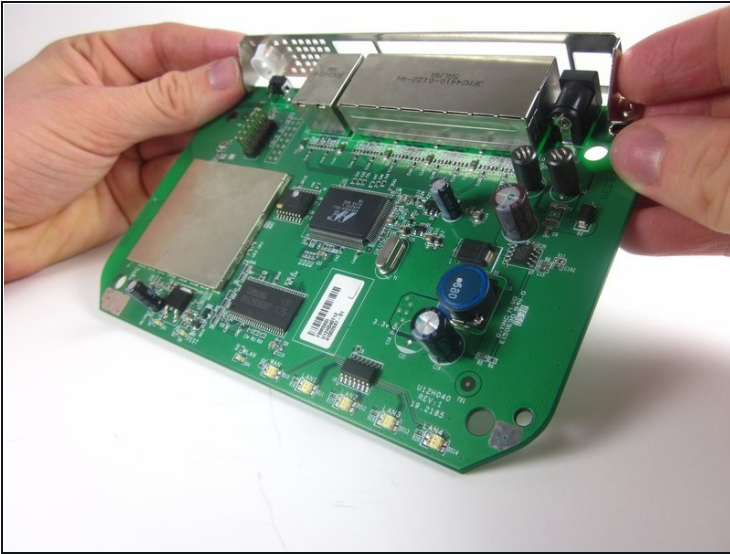
- Completely separate the antenna and wire from the rest of the device.

Step 13 — Power Supply



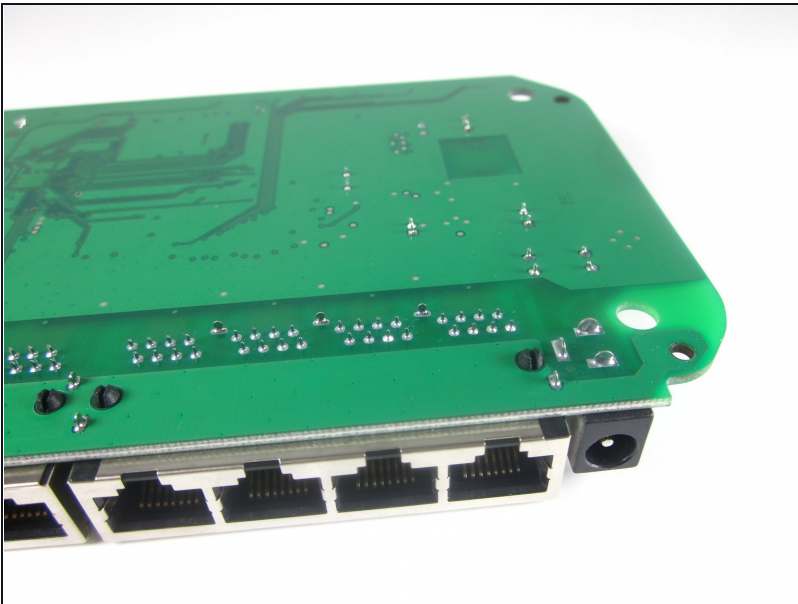
- Unscrew the two 5 mm Phillips Head screws located at the front corners of the motherboard.

Step 14



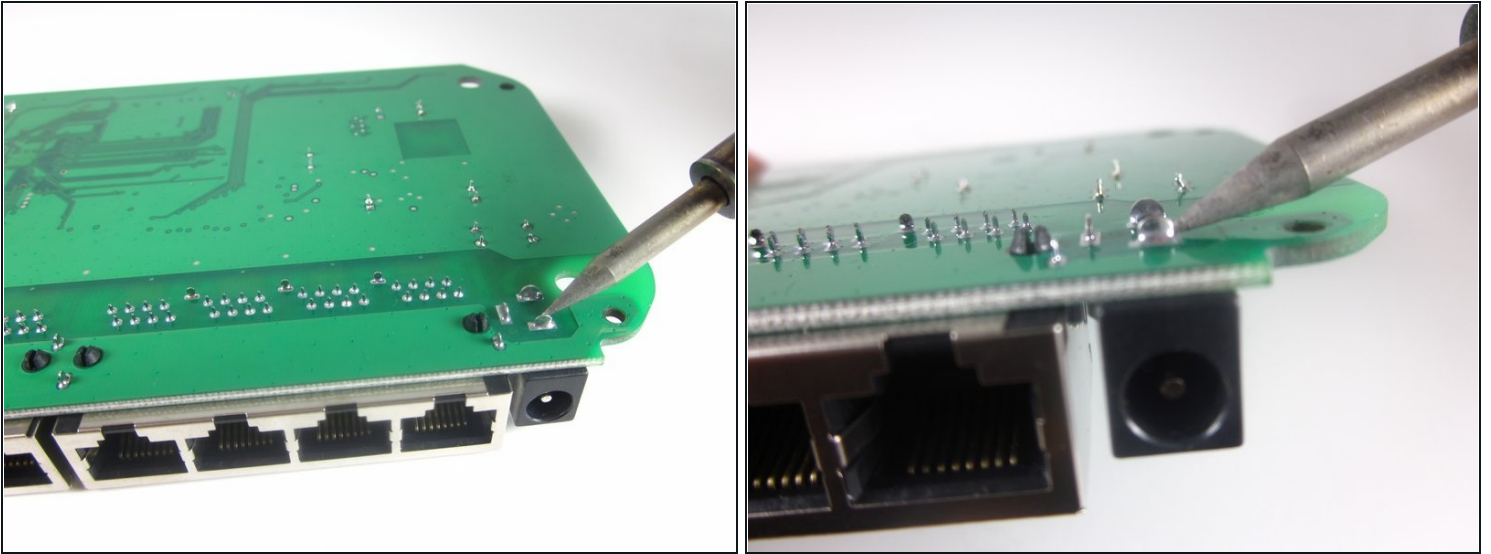
- Take off the metal frame.

Step 15



- Turn over the motherboard, so that the bottom is facing up.

Step 16



① Do not refer to the pictures in this step for correct soldering and de-soldering techniques. They are solely for illustration purposes.

- Desolder the three connections between the reset button and the motherboard

① For proper soldering and desoldering techniques, refer [here](#).

- Pull the power source from the other side of the mother board once the solder is liquid.

To reassemble your device, follow these instructions in reverse order.