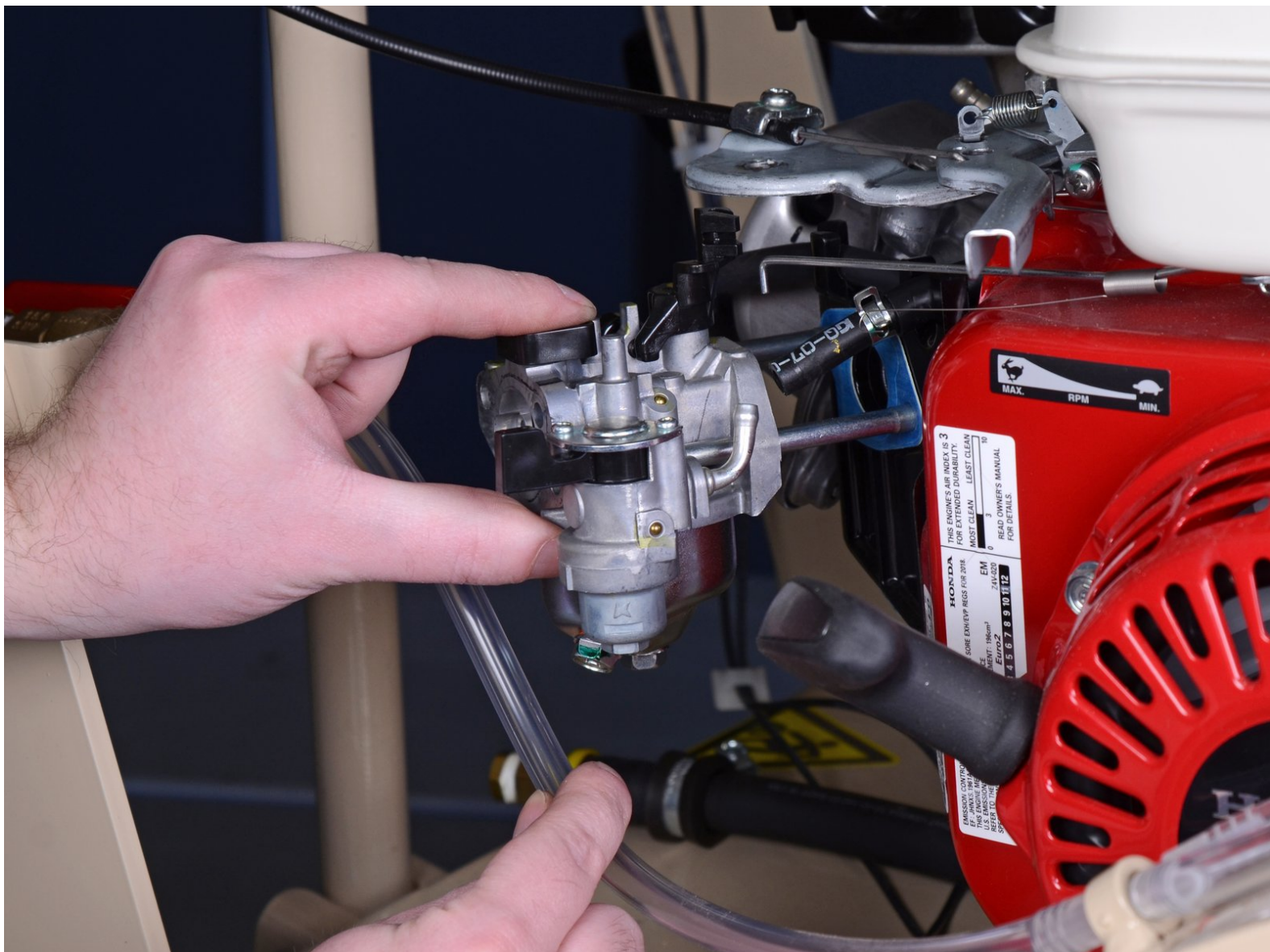




# Edco KL14 Carburetor Replacement

Replace a damaged or worn carburetor on the Edco Cement Saw KL1465H.

Written By: Craig Lloyd



---

## INTRODUCTION

Follow this guide to remove a carburetor on the Edco Cement Saw KL1465H, either for cleaning or replacement.


---

### TOOLS:

- [Wheel Chocks](#) (1)
  - [Large Needle Nose Pliers](#) (1)
  - [10mm Wrench](#) (1)
-

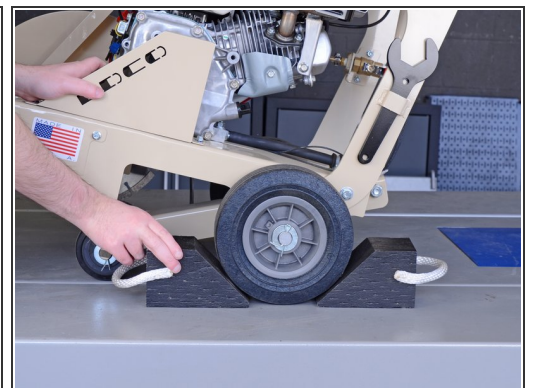
## Step 1 — Disengage the Spark Plug



 Before you begin, ensure that the machine is powered down and cool to the touch.

- Disconnect the spark plug to prevent the engine from accidentally starting up during service:
  - Grab the plastic spark plug cap at the end of the spark plug wire.
  - Firmly pull to disconnect the spark plug cap from the spark plug.

## Step 2 — Place Wheel Chocks



- To prevent the concrete saw from rolling during service, place wheel chocks in front of and behind a rear wheel.

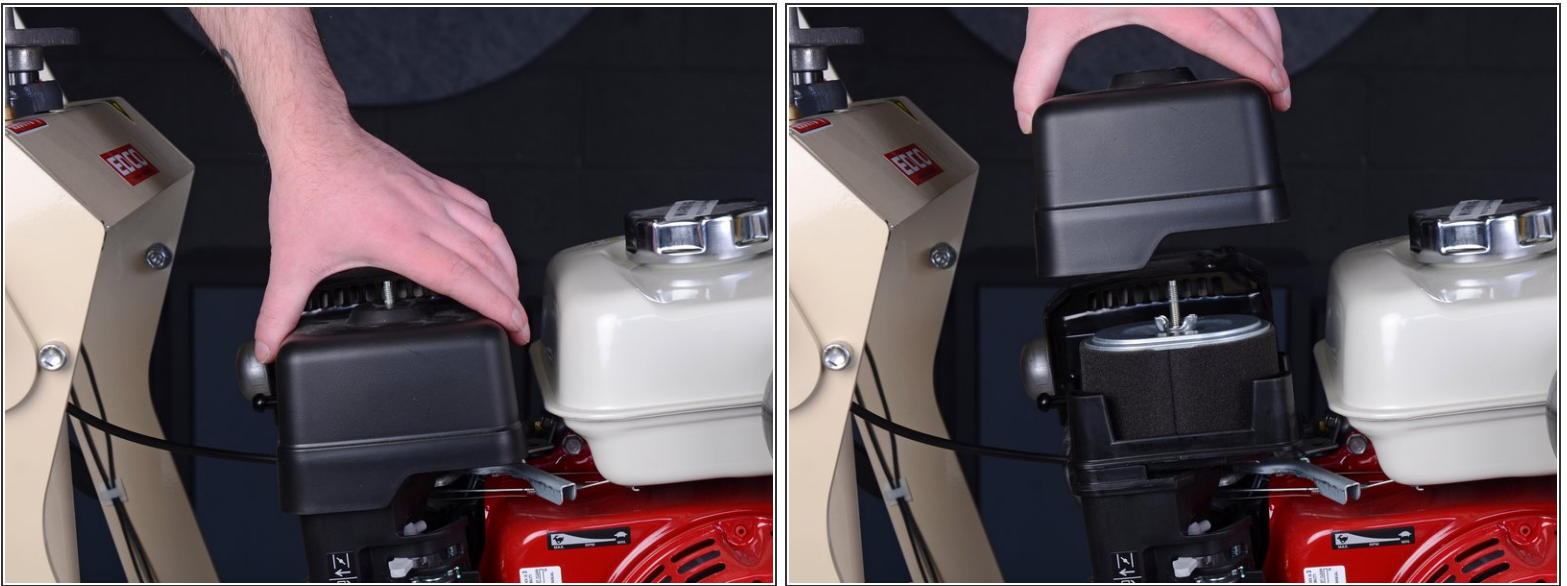


### Step 3 — Remove the Air Filter Cover



- Use your fingers to unscrew and remove the wing nut securing the air filter cover.

### Step 4



- Lift the air filter cover straight up to remove it.

## Step 5 — Remove the Air Filter



- Use your fingers to unscrew and remove the wing nut securing the air filter.

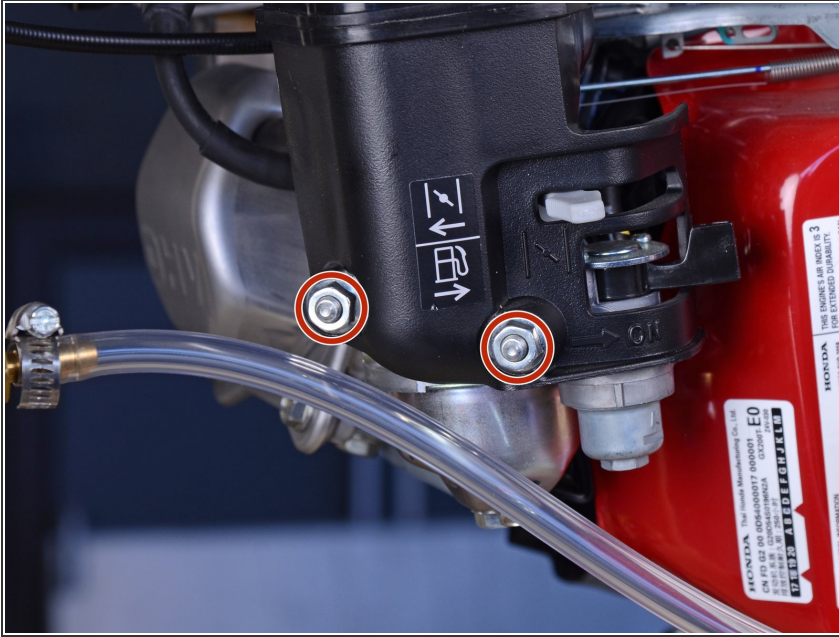
## Step 6



- Grab the black plastic air filter platform and lift it straight up with the air filter to remove both components.

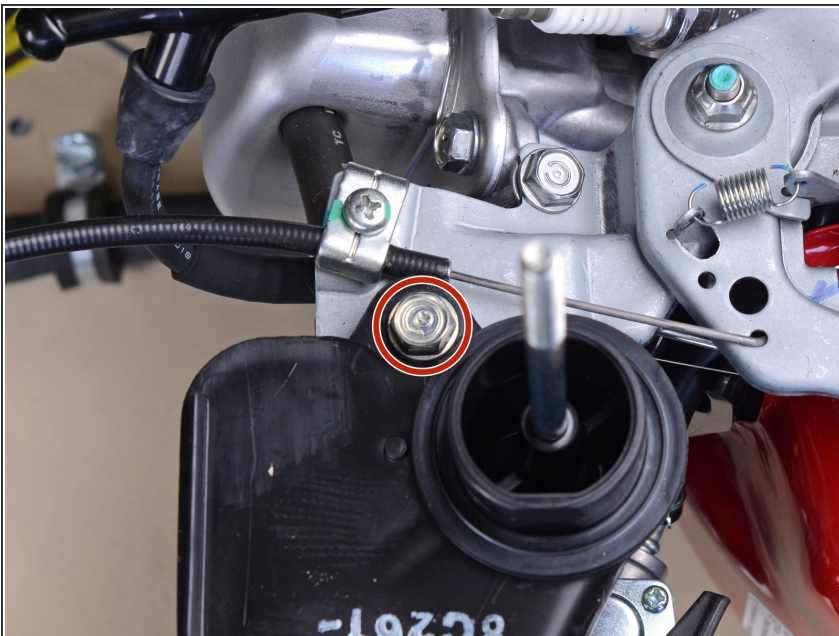


## Step 7 — Remove the Air Filter Elbow



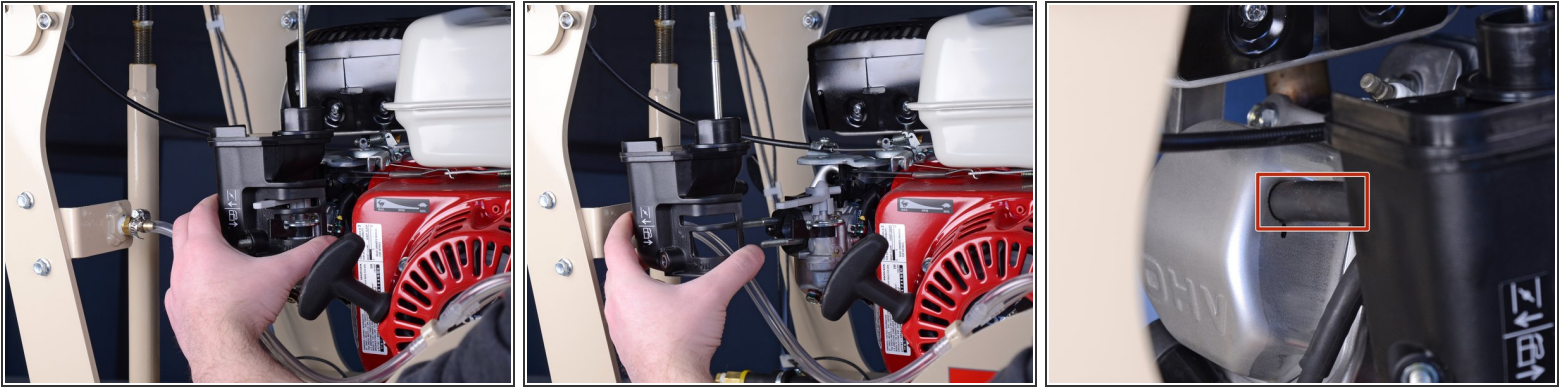
- Use a 10 mm wrench to remove the two nuts securing the air filter elbow to the carburetor's threaded rods.

## Step 8



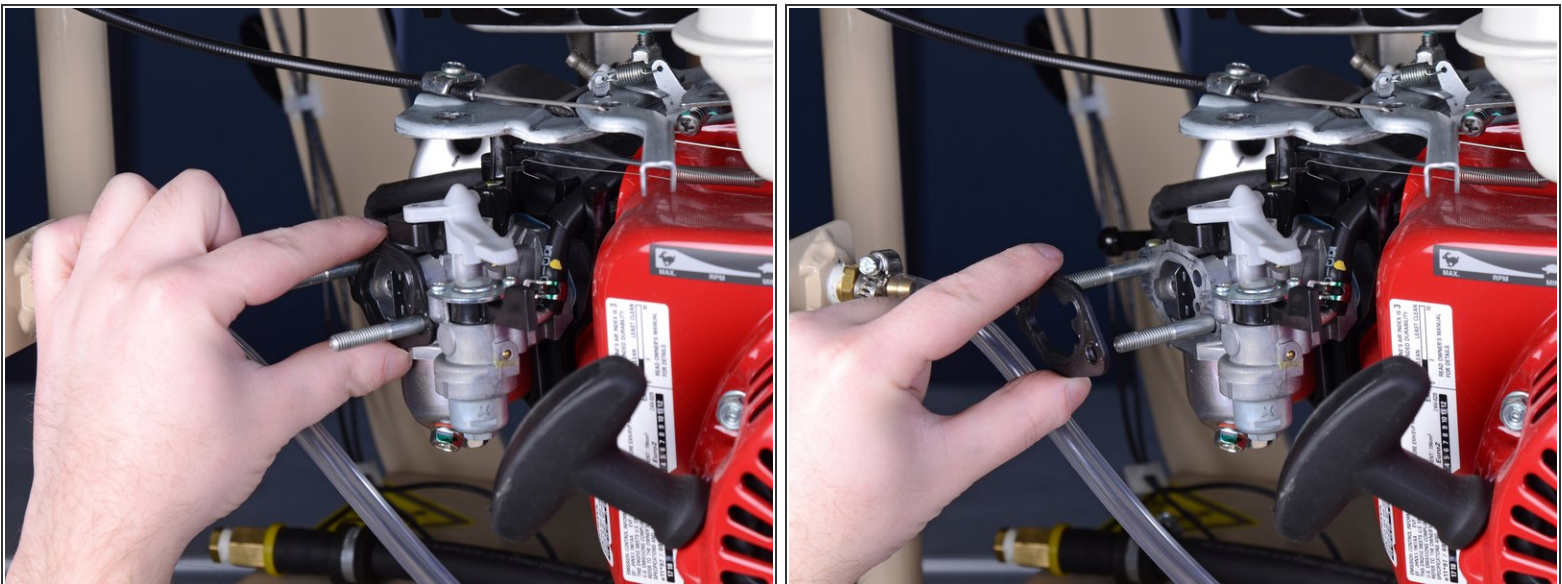
- Use a 10 mm wrench to remove the bolt securing the air filter elbow to the concrete saw.

## Step 9



- Pull the air filter elbow straight off of the carburetor's threaded rods.
- The breather tube on the rear side of the air filter elbow should come out with the elbow. If you have difficulty removing the elbow because of the breather tube, use your fingers to loosen its press-fit connection to the engine's valve cover.

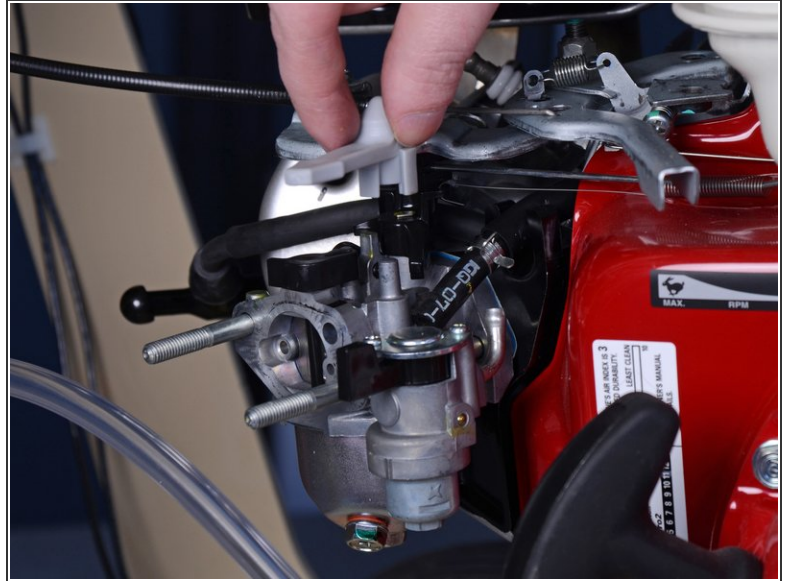
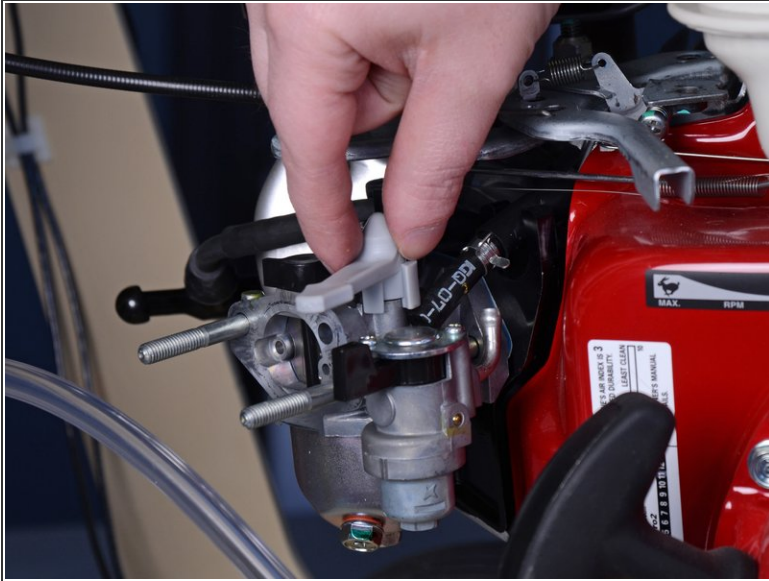
## Step 10 — Remove the Carburetor Spacer



- Pull the carburetor spacer straight off, making sure it clears the threaded rods.

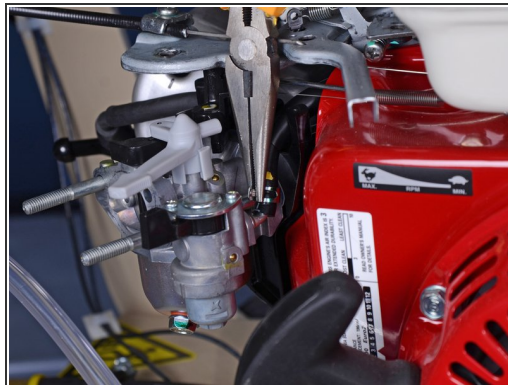


## Step 11 — Remove the Choke Lever



- Pull the choke lever straight up to remove it from the carburetor.

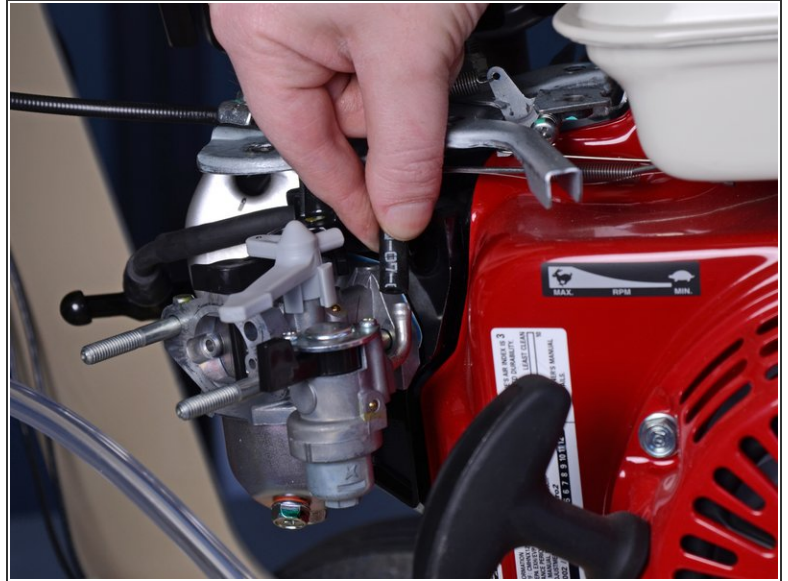
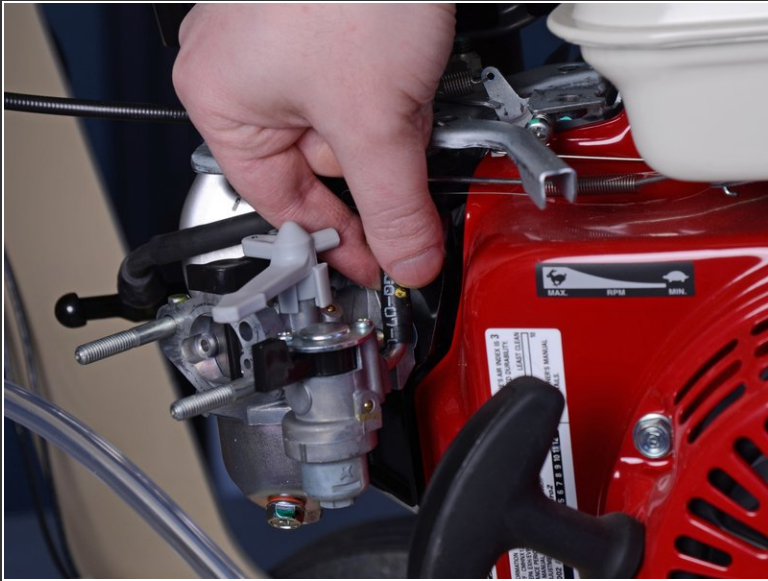
## Step 12 — Remove the Fuel Supply Hose



- Use a pair of needle nose pliers to squeeze and loosen the spring hose clamp on the fuel supply hose.
- Move the clamp up 2-3 cm so it's not clamping down onto the end of the tube.

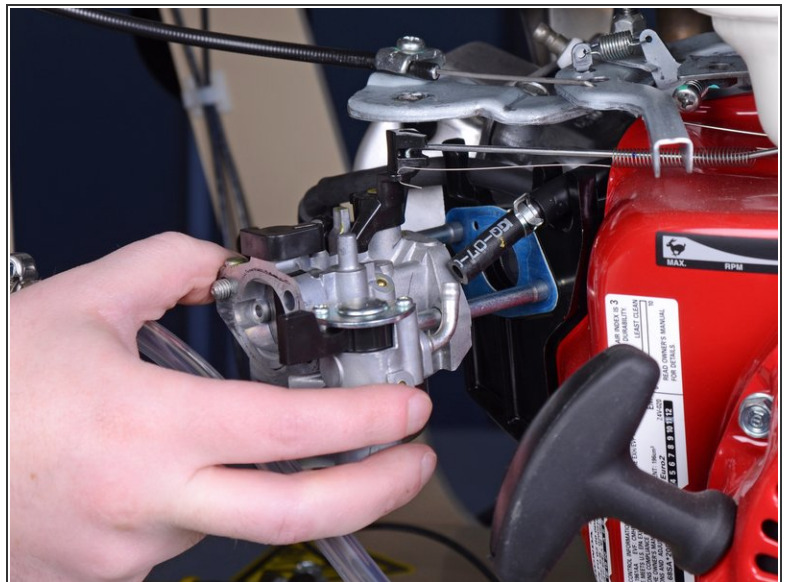
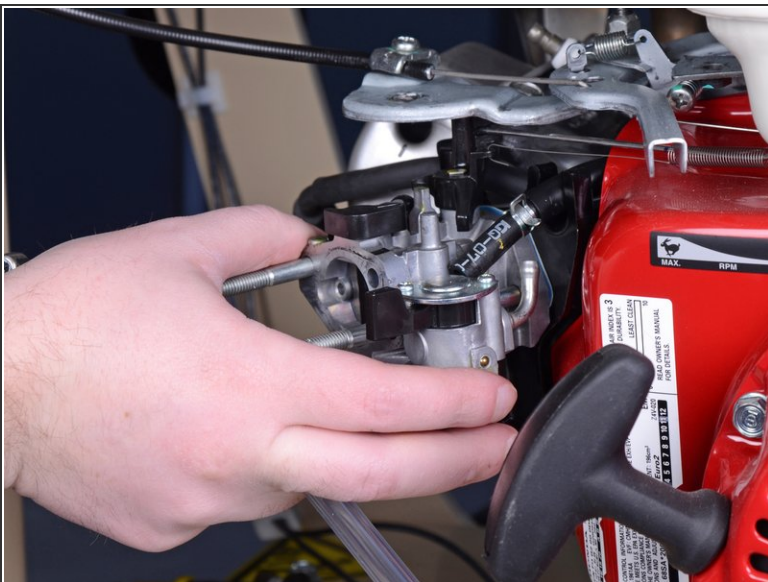


## Step 13



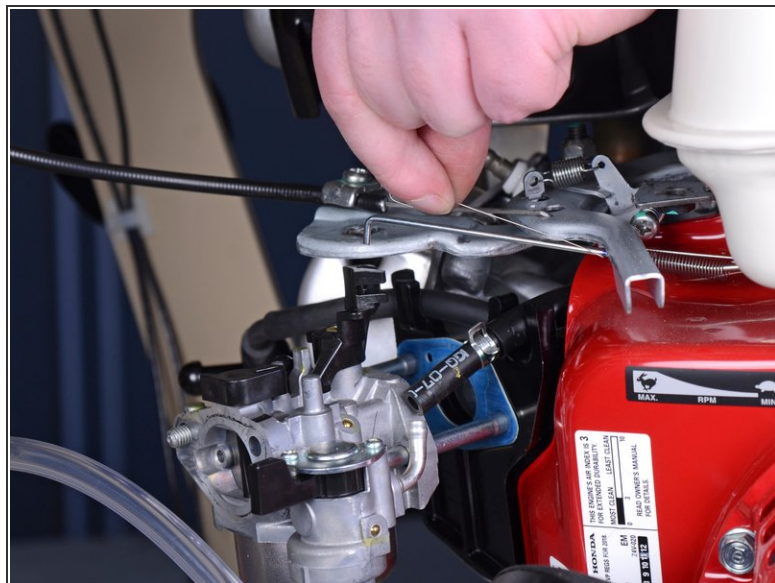
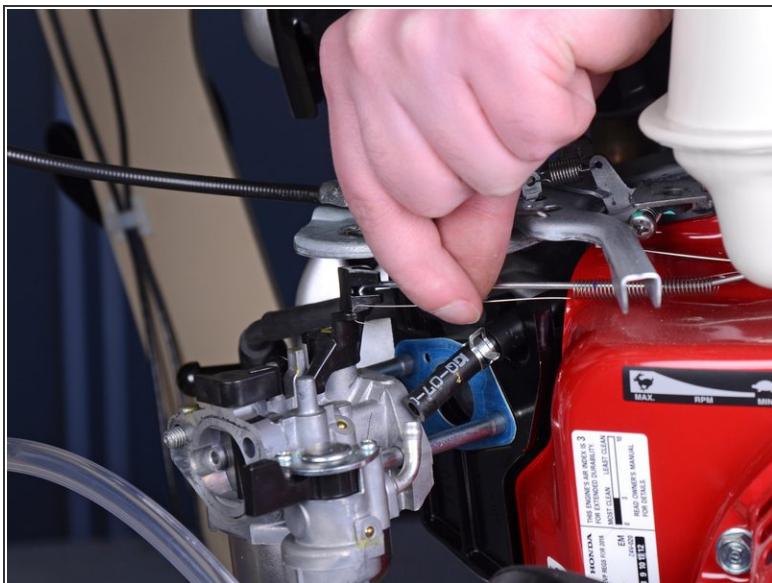
- i** If you didn't completely drain the fuel tank beforehand, have a gasoline-safe container ready to catch the gasoline as it drains out of the hose.
- Grab onto the end of the fuel supply hose and pull it straight up to disconnect it from the carburetor.

## Step 14 — Remove the Throttle Return Spring and Governor Rod



- Pull the carburetor halfway out, but do not completely remove it yet.

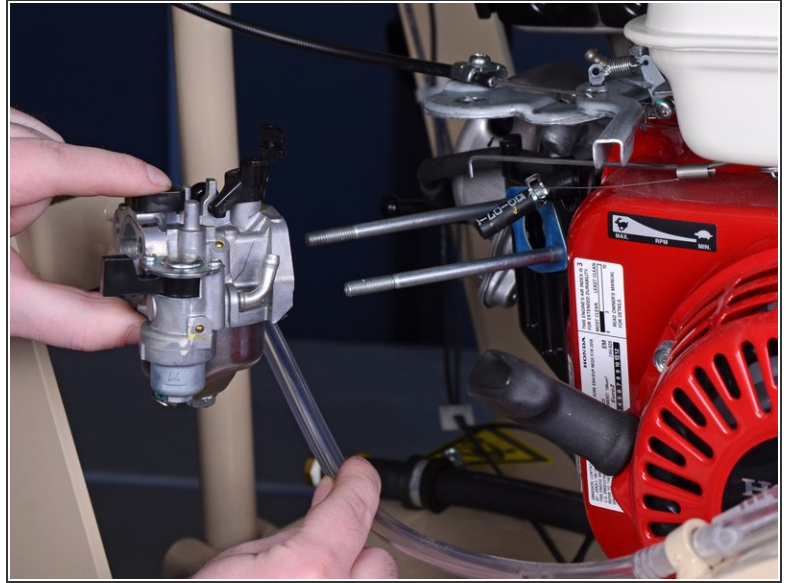
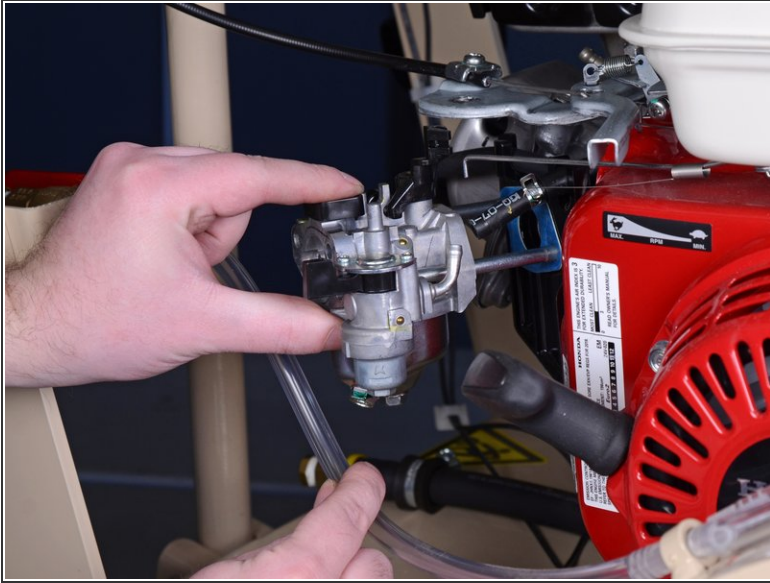
## Step 15



- Grab the throttle return spring and lift it up to remove it from the carburetor.
- ⓘ The governor rod is connected to the throttle return spring, so it should lift up and off with the spring. If not, lift it straight up to remove it from the carburetor.



## Step 16 — Remove the Carburetor



- Pull the carburetor straight off of the threaded rods to remove it.
- ⓘ Use your other hand to pull the water supply hose out of the way as you remove the carburetor.

To reassemble your device, follow these instructions in reverse order.